



ईन्द्रप्रस्थ-10

The
Palm
Court



Adding one more feather in Indraprasth series...

1
2
3
4
5
6
7
8
9
10

इन्द्रप्रस्थ-10

इन्द्रप्रस्थ
The
Palm
Court

इन्द्रप्रस्थ-10

4 BHK Hi-End Luxurious Apartments

Changing the dimensions of living...

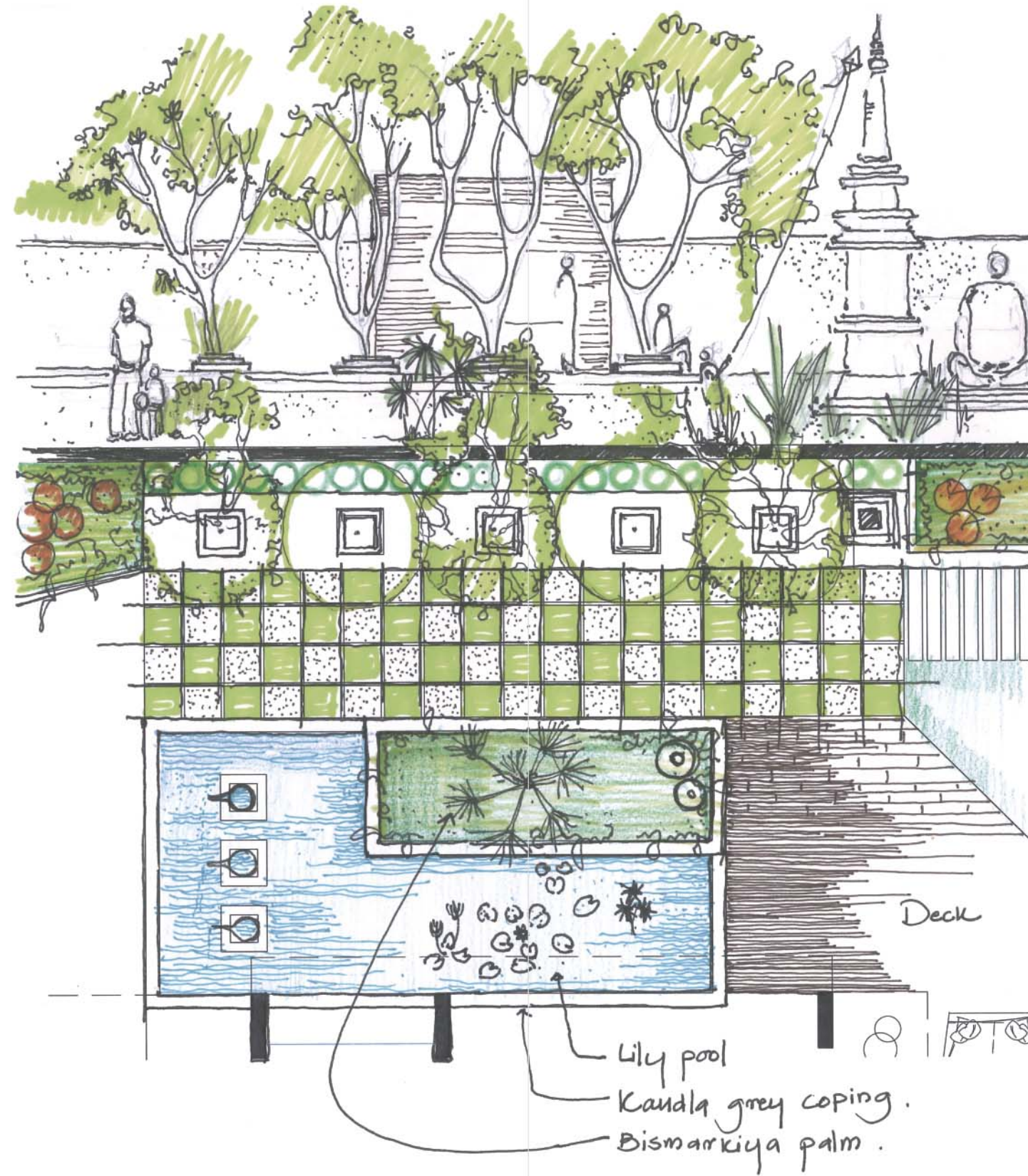


Architect &
Landscape
Designer

'The Palm Court' is a perfect blend of basic needs and futuristic planning which merges a 'home' to the 'nature'. One can experience the grandeur once he enters to the vista of 'The Palm Court' accompanied by the green avenues and courts of various palms, and lasts until he finishes his journey to his own dwelling.

'The Palm Court' is having maximum utilization of natural light and cool breeze through cross ventilation and the planters provided at different levels on the surfaces exposed to the eminent heat, and thus creates an exquisite ambience within the dwelling. Verdure relishes through all levels of 'The Palm Court' as the 'greens' starts from the ground, ascends on the facades and reaches to the top floor being a terrace garden.

HPA Design Team



Since 1980

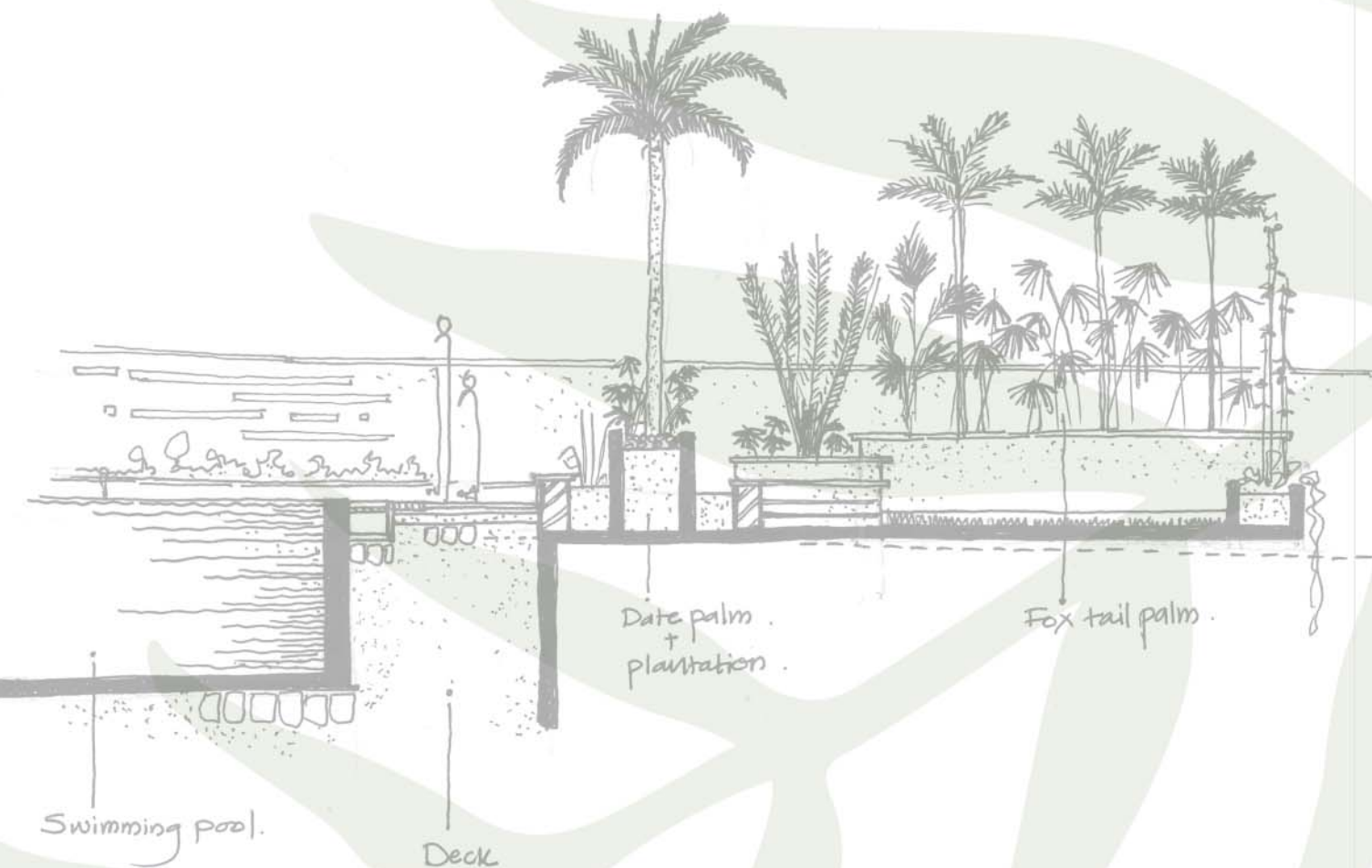
We believe in transformation of lifestyle than just providing 'home'. 'The Palm Court' our dream project brings you near to nature and lets you feel peace. Your home at 'The Palm Court' will be an art of living. Harmonization of interior space and landscape design makes the architecture integral which gives you feeling of oneness.

'The Palm Court' is a beyond Lifestyle Luxury Apartment scheme in our "Indraprasth" series having equal focus on spaces like interior space, private space and community space. We, an experienced team are sure to transform dreams into reality through this project as We have done before.

Nupur Developers



The Palm Court promises new-age lifestyle to people who prefer class with one of the best localities in the city!





An exquisitely designed courtyard surrounded by a plethora of palms welcome you to the high-rising tower adorned with glorious greens, blending materialism with natural beauty.



The Palm Court is beset with palm trees all around the complex radiating serenity and scintillating beauty.

The views are spectacular, yet retain peace, picturesque and magnificent, yet with a pleasant ambience!



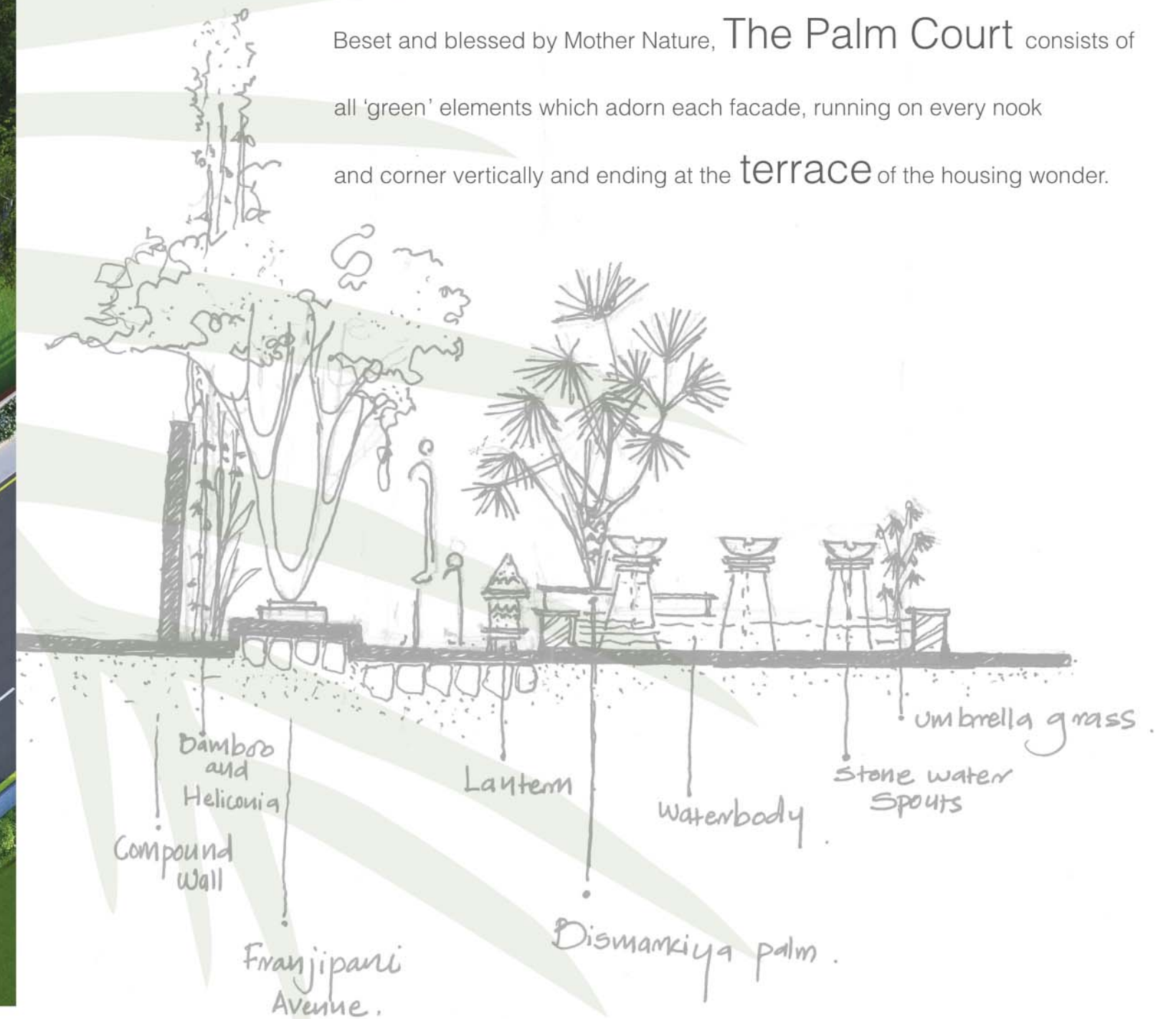
Long, winding driveways with cool and calm surroundings define the living experience at The Palm Court. The floral watery spots are both eye-catching and strategic in the locations.

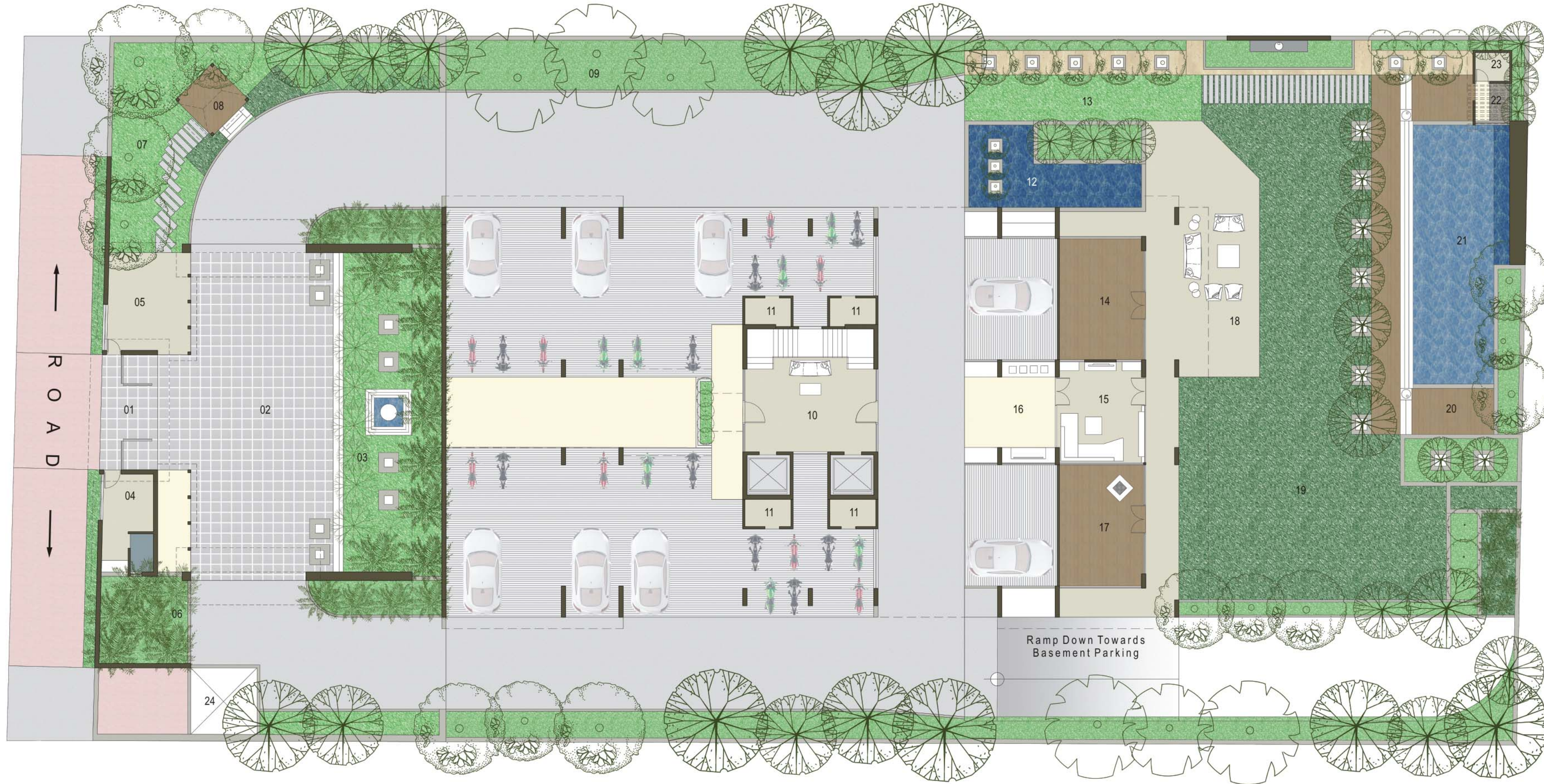


The amazing amenities and the facilities provided by The Palm Court make life worth living. The luxuries are provided without any frills attached, and for a fine experience of perfect habitat.



Beset and blessed by Mother Nature, The Palm Court consists of all 'green' elements which adorn each facade, running on every nook and corner vertically and ending at the terrace of the housing wonder.





Legend

- 01 Entry
- 02 Entrance Court
- 03 Foxtail Palm Court
- 04 Security
- 05 Bus Pick-Up
- 06 Araca Court
- 07 Bottle Palm Court
- 08 Covered Sitting
- 09 Prichardia Avenue
- 10 Foyer
- 11 Meter Room
- 12 Water Feature
- 13 Champa Avenue
- 14 Gym
- 15 Lounge
- 16 Waiting Foyer
- 17 Indoor Games
- 18 Verandah
- 19 Lawn
- 20 Deck
- 21 Swimming Pool
- 22 Open Air Shower
- 23 Changing Room
- 24 Electrical Substation







Elegance touches the living space of every unit of **The Palm Court**. A modern concept of **Open Kitchen** serves its real purpose at the shimmering interiors. The kitchen faces the living room and dining space making the place utterly vibrant and spacious.



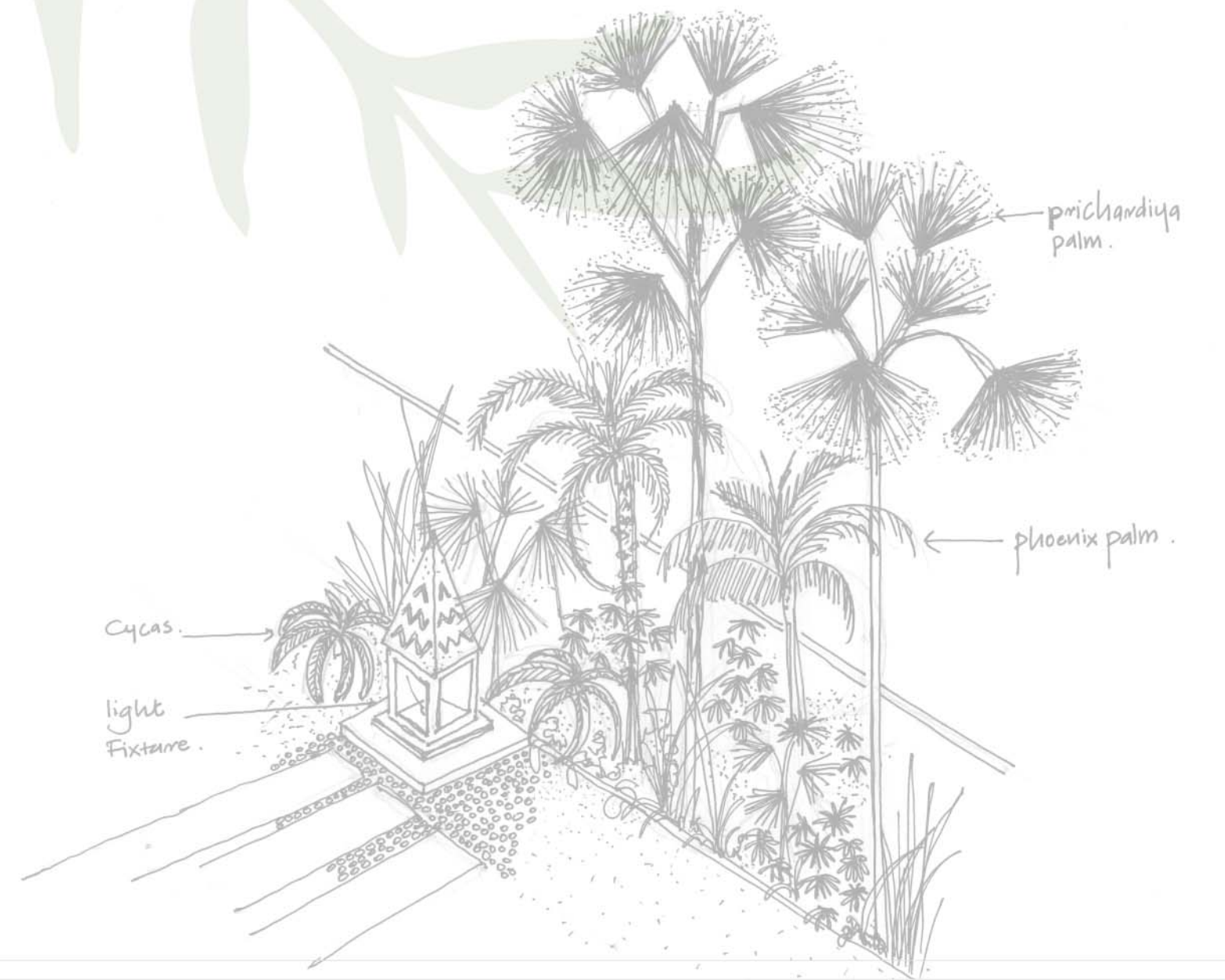
Space is an important component of our homes and surroundings. The Palm Court makes sure that each and every space is utilized in an optimum manner with a brilliant provision of interior space, private and community space.



Layers and layers of vegetation and greenery rule on each and every nook and cranny of The Palm Court. The complete green tower effect is just serene and classic for every inhabitant here.



As the light flickers away into the night, **The Palm Court** rises and shines gloriously in all **glitz and style**. The perfect symmetry of sense and style...



Amenities



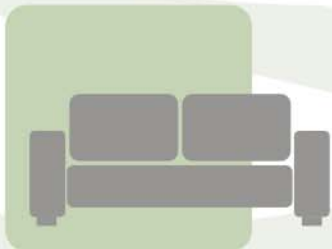
INDOOR GAMES



GYM



SWIMMING POOL



WAITING LOUNGE



SECURITY



CAR PORCH



PARTY LAWN



BUS PICK UP



AMPLE SPACE FOR PARKING

Key Plan (Not to Scale)



Specifications of residential unit and details of the scheme and common infrastructure

- **Doors:** Veneer designed doors and wooden frame with stone sill. Good quality C. P. fittings.
- **Windows:** Vacuumed double glass windows and stone sill.
- **Bathrooms:**
 - High range vessels of reputed brands.
 - Single lever bathrooms faucets & good quality showers.
 - Good quality tiles flooring & dado as per architect's design.
 - Partly Glass / Curtain – divider for Dry / Wet area.
 - Master bathroom with shower panel and glass enclosure.
- **A. C. Provision:** Split A. C. units in all Bedrooms, Drawing-Dining & Living area.
- **Kitchen:** Modular designer kitchen platform with designer ceramic tiles dado, Sink cock and elegant Sink, Store room & wash place with glazed tiles dado. Adani gas pipeline facility.
- **Flooring:** Wooden flooring in all Bedrooms. Other rooms with Imported marble or composite marble flooring as per architect's design.
- **Elevators:** 2 Automatic Elevators.
- **Club Activities:** Indoor Games, TV Lounge and Gym.
- **Common Development:** Well developed common areas with Landscape Courts, Fountains, Gazebo, Swimming Pool, Children Play Area, Sit outs etc.
- **Security System:** Scheme and flats are equipped with Security System as per details finalized.
- **Water Supply:** With newly designed pressure, systems to ensure 24-hour water supply with power back-up Generator.
- **Elevation:** Exterior with double coat plaster and Acrylic paint.
- **Electrification:** Concealed three-phase electrification with adequate points as per Architect design.
- **Roads:** Internal Roads paved with as per Architect's design.
- **Entrance Foyer:** Elegant entrance foyer as per architect's design.
- **T. V.:** Cable Facility provided in every Flat.
- **Anti-Termite Treatment:** At Ground level.
- **Elegant Entrance Court:** A carefully designed space welcomes you in 'The Palm Court' bestowing grandness and luxury at same time.

Note
Details of specifications and common infrastructure mentioned here is a guideline. Developer & Builder shall finalize exact details in consultation with architect of the project, which will be binding to the purchaser herein and all other purchasers.

Legal Notes

- Stamp duty, Registration charges, Legal Documentation charges, Fix Maintenance charges, AUDA charges and Torrent Electrical charges including Cable and Sub-Station cost shall be borne by the purchaser.
- Service Tax, any additional charges, taxes, cess or duties levied by the Government / Local authorities prior, during or after the completion of the scheme will be borne by the purchaser.
- In the interest of the continual developments in design and quality of construction, the developer reserves all rights to make any changes in the scheme, including technical specifications, design, planning and layout at any stage. All the purchasers shall abide by such changes.
- Changes / Alteration of any nature, including the Elevations, Exterior colour scheme of the Apartments or any other change affecting the overall design concept & outlook of the scheme by any purchasers are strictly not permitted during or after the completion of the scheme.
- The brochure is intended only to convey the essential design and technical features of scheme and shall not be construed to form part of the legal document agreement for allotment shall be final and binding to purchaser.

DEEP GROUP is...



Patron Member of GIHED.



Associated with CREDAI, Gujarat.



Supporting AHF.



Patron Member of GICEA.

ISO 9001:2008 Certified



Architect & Landscape Designer



Tel: + 91 - 79 - 2676 7264 / 2675 2621 / 2676 6639 / 2676 6640
Email: admin@hirenpatelarchitects.com

www.hirenpatelarchitects.com

Developers:



Since 1980

Project By: **NUPUR DEVELOPERS**

10th Floor, President House, Opp. C. N. Vidhyalaya
Ambawadi, Ahmedabad - 380 006.
Ph.: +91-79-2644 6232 / 33
Email: info@deepgroup1980.com

[www: deepgroup1980.com](http://www.deepgroup1980.com)

Site:

Indraprasth - 10 "The Palm Court"
Near Pride Hotel, Judge's Bungalow Road
Bodakdev, Ahmedabad - 380 054.
Ph.: +91-79-6525 2586