

A whole new  
storey of luxury

 **NEPTUNE**  
**AVENS**  

---

**FULL FLOOR FLATS**

# About Neptune

Back in December, 2002, a dream took shape. A dream to do something many people had done before, and yet, turn it into something nobody had done before.

People built houses, nobody had built homes. Others constructed towers, nobody had constructed relationships. Many had laid the foundations for success, nobody looked to succeed by laying the foundations of something more relevant.

Out of this dream, arose Neptune. Started and populated with a group of young, enthusiastic and dynamic professionals, it is a company like no other on the real estate planet.

For Neptune differentiates itself by actively seeking to be a part of the neighbourhoods in which it operates. It touches lives. It listens. It has a nose for what's in people's hearts. It sees inside minds. It has a taste for your world. It is, indeed, yours in every sense.



# Welcome to your storey at Neptune Avens

Avens takes modern living to a whole new storey.

BHKs are passé. These apartments are FFF (full floor flats) – which means your home takes up solo status in an entire storey.

Spaces are laid out with a sense of aesthetics, and a feeling of home.

Amenities are designed with exquisite attention to detail, convenience and indulgence.

Yet, while it sets you apart from the world, it is perfectly located to offer you the best of city's action.





## Life on top

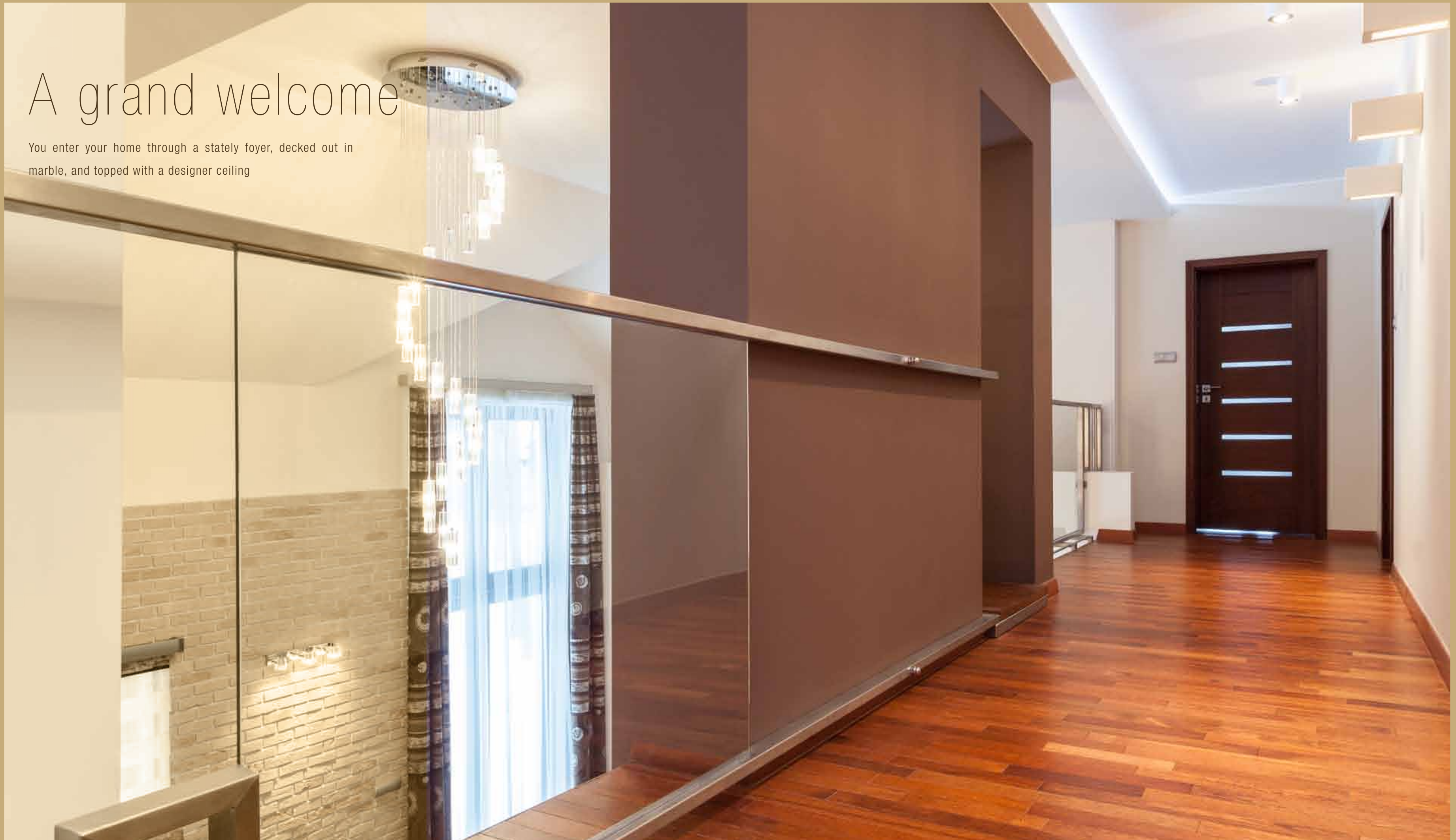
Soar above even the finest living in the city in an apartment that spans luxuriously over an entire floor.

Grand 12" high ceilings enhance your feeling of exclusive personal space.

Look out on your kingdom with a magnificent view of the city's skyline.

# A grand welcome

You enter your home through a stately foyer, decked out in marble, and topped with a designer ceiling

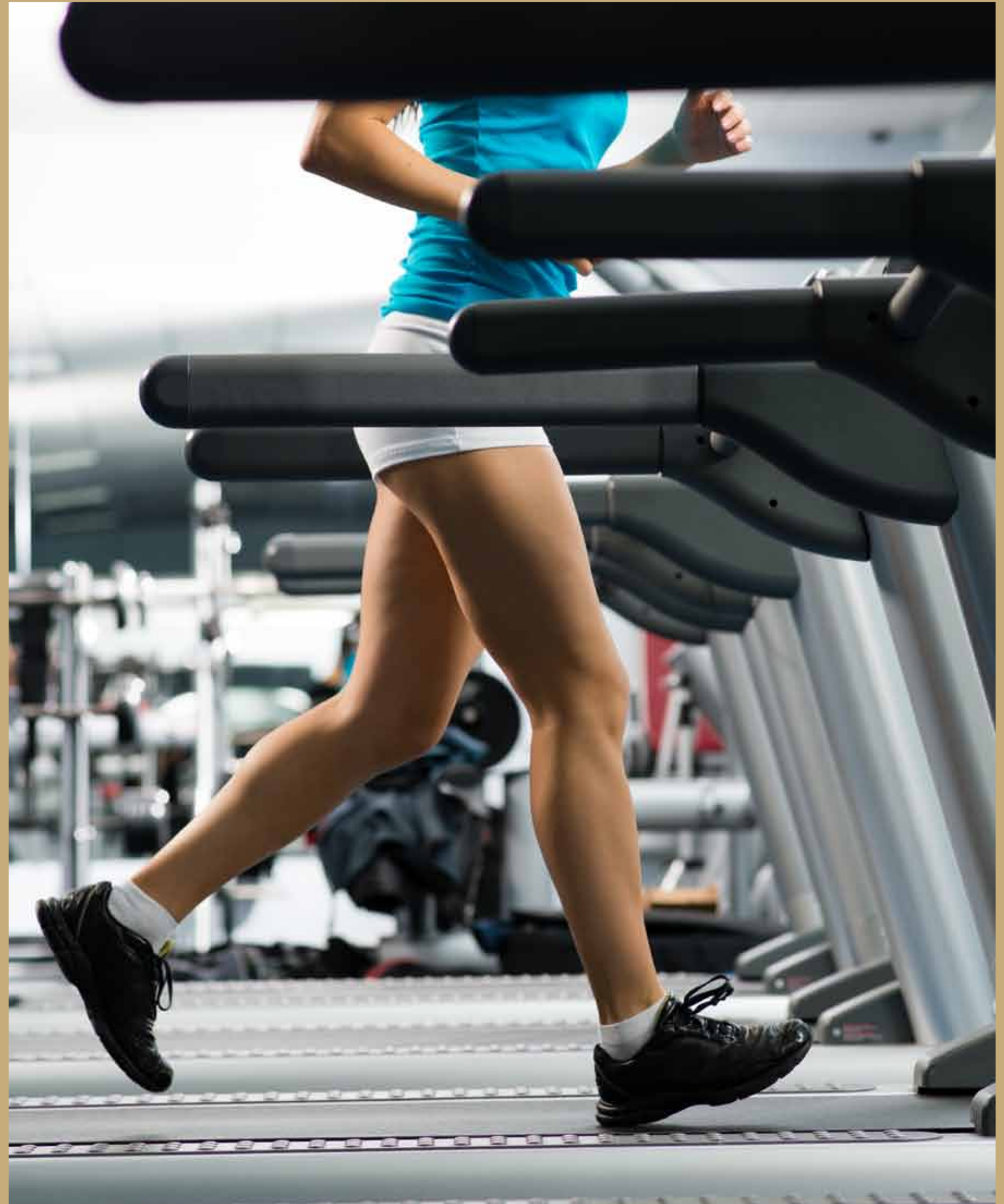


# Special touches

A concierge is on hand to see to your every need and desire

A private auxiliary parking floor for every flat, reachable via a car lift, gives you a private and easy way to leave and arrive home.

A gym & clubhouse lets you keep a healthy daily routine.



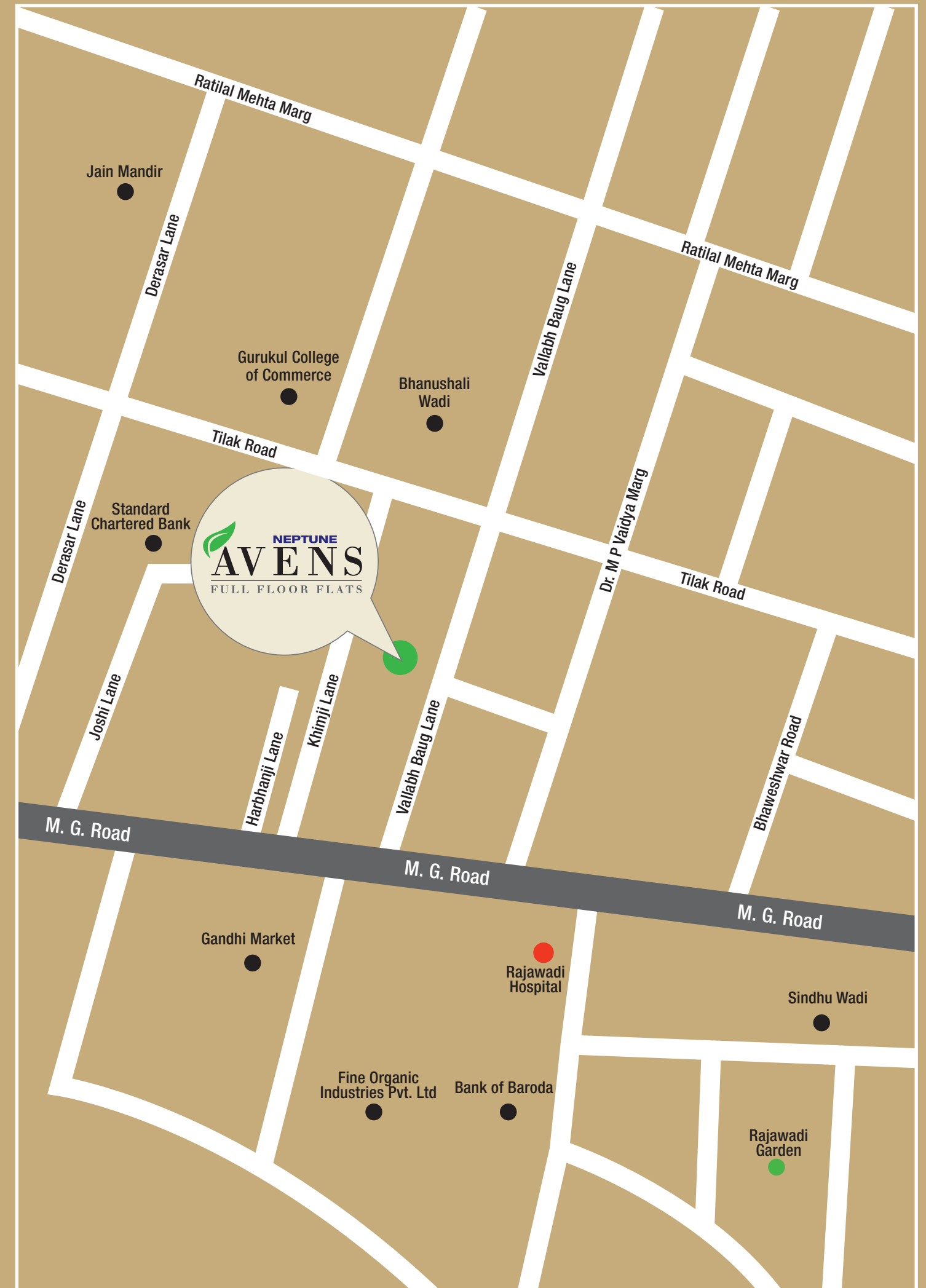
# A safe environment

Care is taken at Avens to make your home and its surroundings as secure as possible, so you live with complete peace of mind.

A decorated compound wall keeps unwanted elements out.

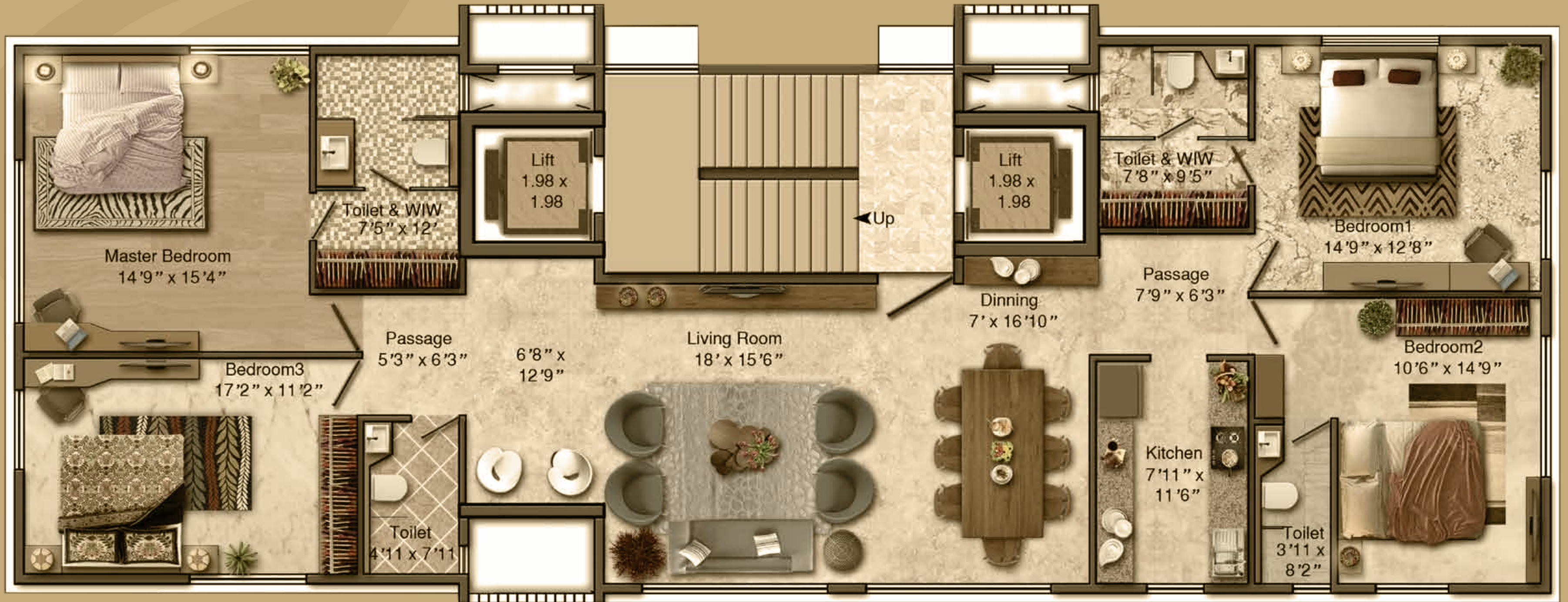
A fire alarm and gas detector alerts you to any possible dangers.

An intercom and video door phone gives you complete knowledge and control over whom to let into your home.

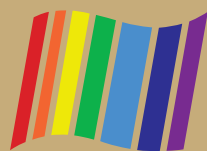


# TYPICAL FLOOR PLAN

Carpet Area - 1748 Sq. Ft.







**NEPTUNE**

Yours. in every sense.

**Sales Office: Neptune Living Point**, LBS Marg, Bhandup (W), Mumbai - 400 078. Tel. No.: **+91 80808 09068**

**Site Address: NEPTUNE AVENS**, Plot Next to Tip Top, Vallabaugh Lane, Ghatkopar (E), Mumbai - 400 077.

**Corporate Office: NEPTUNE HOUSE**, Karma Stambh, Opp. MTNL Office, L.B.S. Road, Vikhroli (W),  
Mumbai - 400 083. Tel. No.: 022 6777 0600, Fax No.: 022 6777 0670 • [www.neptunegroup.in](http://www.neptunegroup.in)