



# SATYA

## COMFORTS

We see our Success in the Smiles of our Customers





## Looking for perfect home?

Wishing to have a hassle free, trouble free transactions?

Like to invest in residential Flats?

Then

Satya Constructions is the right place to visit. Established in 2004, Satya Constructions emerged the leader in Construction activity by successfully completing number of commercial and residential projects with uncompromised quality, Trustworthiness, Transparency Time Management, Quality Management and Clear Transactions which are followed by our team.

Till now number of customers fortified their trust in Satya Constructions.

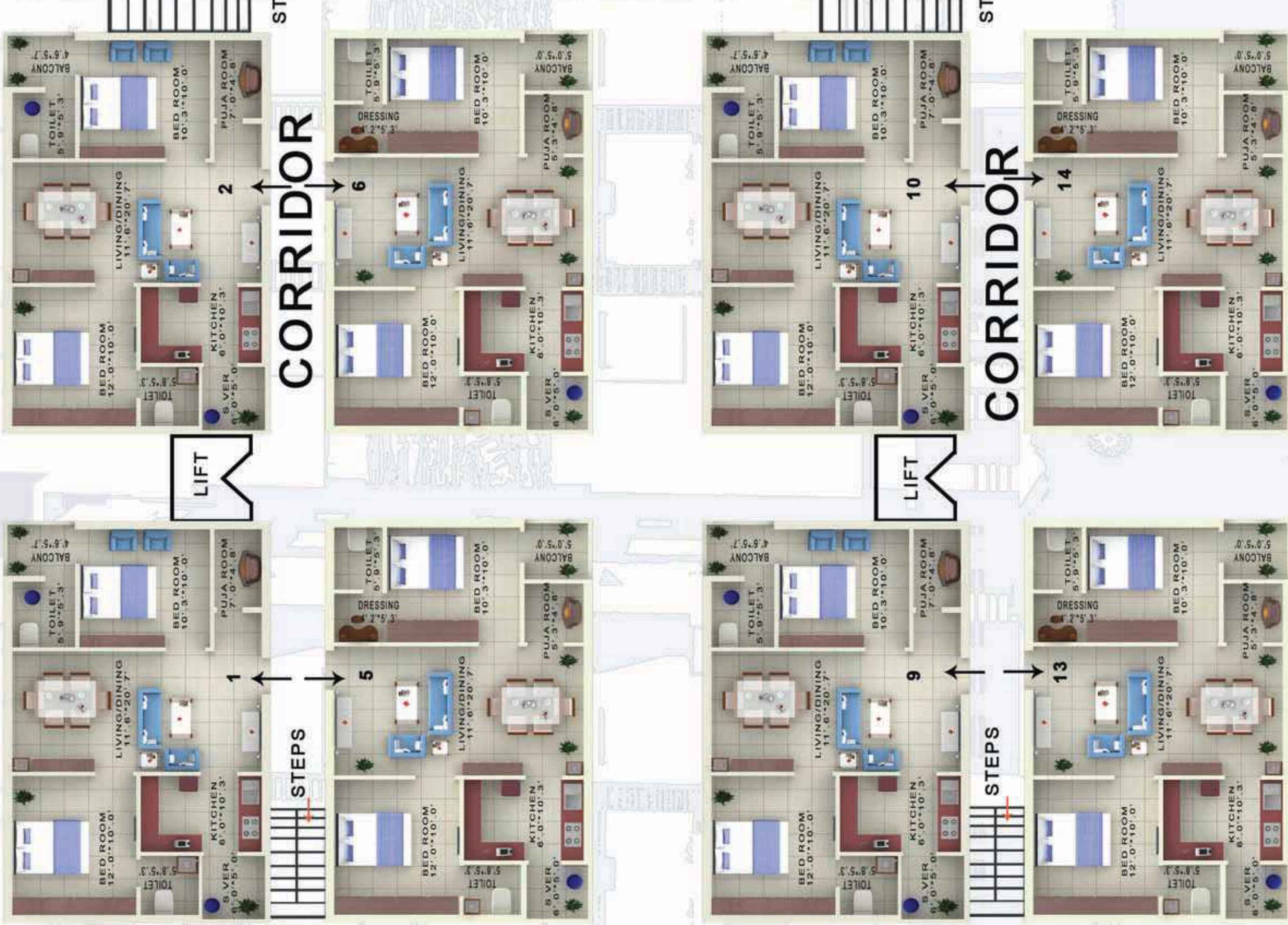
### Outstanding features of Satya Constructions

- Planned by highly Qualified Technically Engineers
- Construction as per approved plan with hassle free legality
- Experienced with number of Completed ventures • Number of satisfied customers till now
- 100% Vastu and Ventilation • 100% Justification in Area Utilization
- Use of only branded material • Undisputed transactions
- Experienced and cooperative staff • High quality construction under expert's supervision.
- Our flats are at reachable prices for all economical sections
- Assistance to get home loans from the financial organizations.

# Specifications

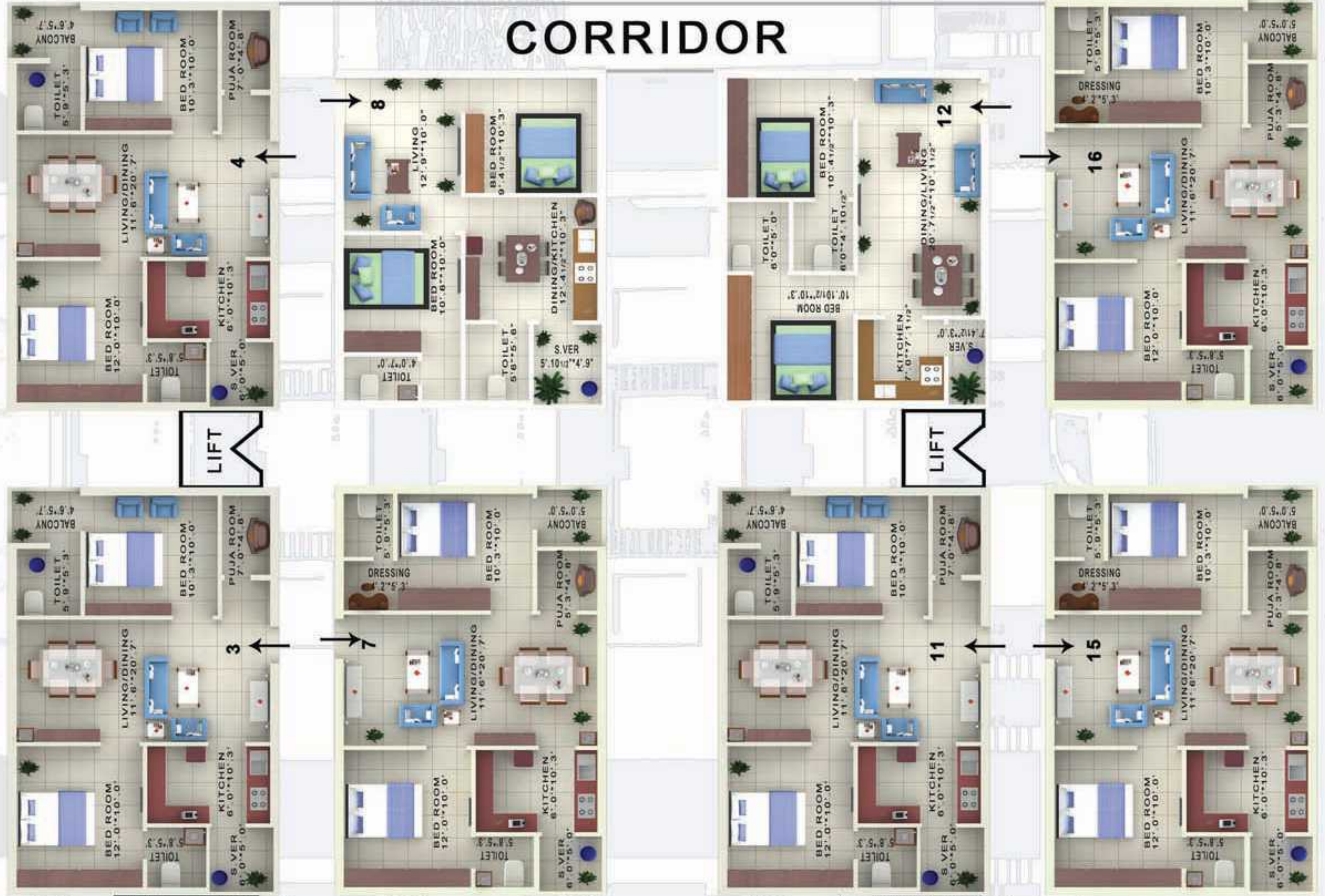
Foundation & Structure	:	Reinforced cement concrete frame work on footing over hard strata
Walls	:	Quality bricks. (9" external walls and 4.1/2" internal walls)
Plastering	:	Double coat pastering for external area of the building.
Internal finishes	:	Cement plaster with sponge finish.
Doors	:	All door frames and main door - Teak wood. Inside doors - Flush doors.
Painting	:	Enamel paint as applicable to Doors, Windows, Window Grills.
Windows	:	All teakwood frames & shutters with glass and window grills
Scurting	:	4" in all rooms.
Flooring	:	Vertified tiles inside the Flats and Ceramic tiles in bath rooms, Balcony and Wash area.
Kitchen	:	Granite platform with dadoing upto 2' height with wall tiles.
Toilets	:	Glazed ceramic concept tile dadoing upto 6'.9" height.
Sanitary ware	:	Good Quality sanitary wear and pipes.
Electrical	:	Modular switches, D-boards with Isolators & Circuit Brakers. Power points in all rooms.
Telephones	:	Point in Bed room.
Lift	:	4Lifts of 5 passengers capacity.
Cable TV	:	Provision for cable TV connection in Living and Master bedroom.
Wash Basin	:	Two wash basins will be provided to each flat.
Generator	:	Acoustics Generator common utility.
Cup-Bords	:	Made of cement flanks.
Additional Facilities	:	Municipal Water, 3 Phase Electricity Meter per each flat & Car Parking.
Note	:	Registration, Service Tax, VAT Tax & Labour cess are to Born by the Purchaser.

# Typical floor plan





# CORRIDOR



EPS

EPS

# CUT VIEWS



West Facing(820 sft)



East Facing(820 sft)

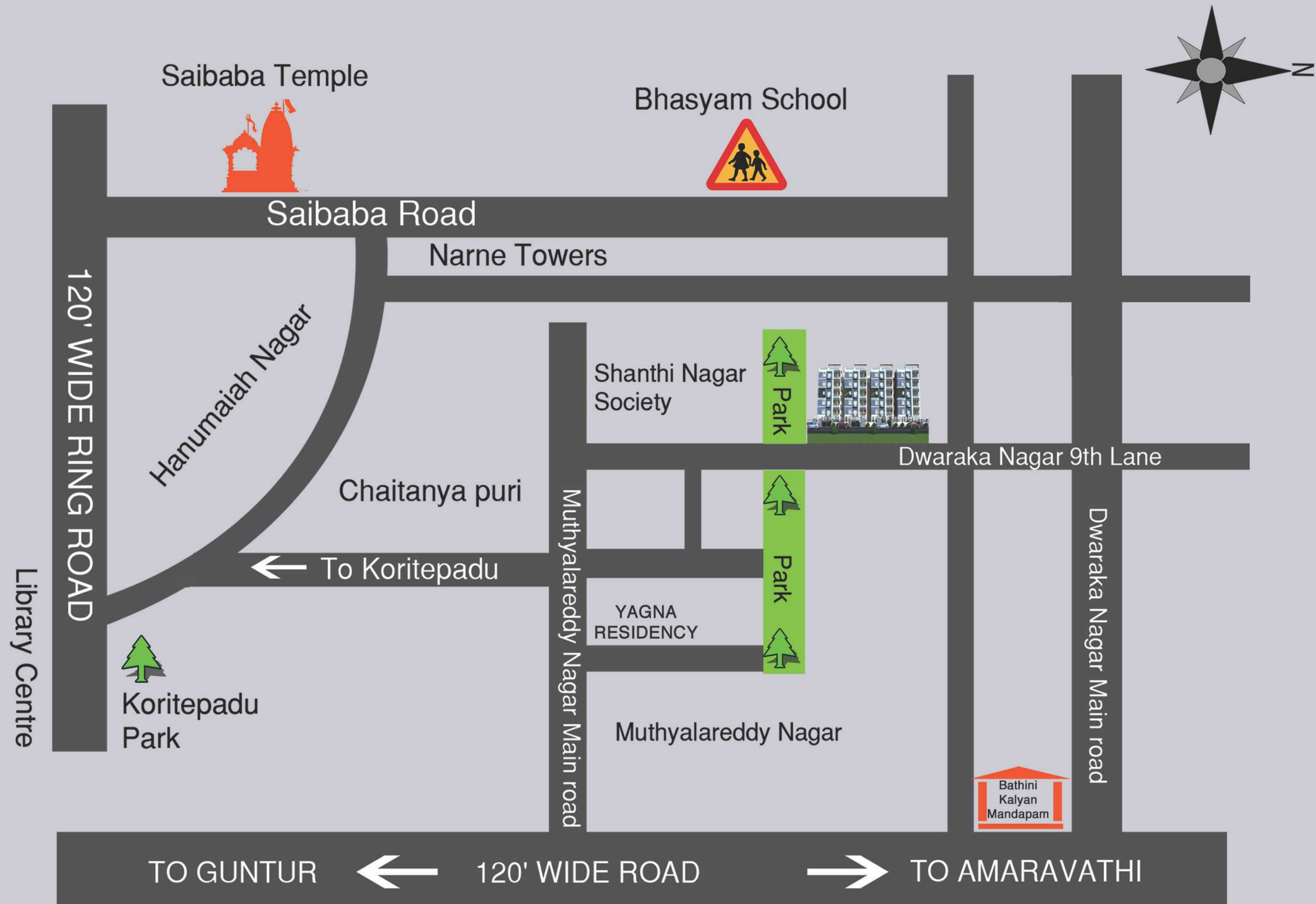
# CUT VIEWS



East Facing (1000 sft)



West Facing (1000 sft)



Promoters

**SATYA CONSTRUCTIONS**

M. Sambasiva Rao, P. Satyanarayana

Office : Satya Nivas, 2/12 Brodipet, GUNTUR- 2.

e-mail : satyaconstructions4u@yahoo.com

ph : 93933 63145, 93933 63149

Engineer & Architects

Ramineni Sivarama Krishna M.Tech

6/9 Brodipet, Guntur. Ph : 98491 36986