

Project by



An abode of luxury lodged  
in the principles of

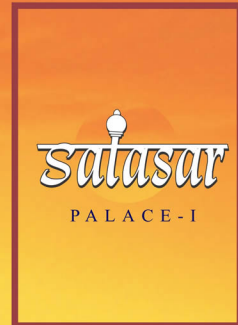
VASTU SHASHTRA



Salasar  
PALACE - I

# The CONCEPT

Salasar Palace-I is a harmony in architecture, with spacious plush interiors, this one of its kind residential scheme has more to offer to you than a house...it gives you a cosy home.





*Salasar*  
PALACE-I



Salasar Palace-I is a harmony in architecture, with spacious plush interiors, this one of its kind residential scheme has more to offer to you than a house...it gives you a cosy home.

| North East View |



**Salasar**  
PALACE-1

# Enter

---

## SALASAR PALACE-1

Come, feel, get amazed and enthralled because  
you deserve the best and nothing else.







**Salasar**  
PALACE-I

## Luxury

A perfect definition of luxury refined by the well being of Vastu, a serene green environ that can bring back the charm in your life; Salasar Palace- I, is promise to be a worthwhile experience to live through. A one of its kind residential scheme where the greens surrounds your soul and the amenities tell you to relax and share the warmth with your loved ones...



Salasar Palace-I - An architectural symphony

# Salasar

PALACE-I

Security coupled with ambience  
makes home coming a pleasure  
Just what the doctor ordered / prescribed  
for de-stressing



Frolicking in the green



# Satasar

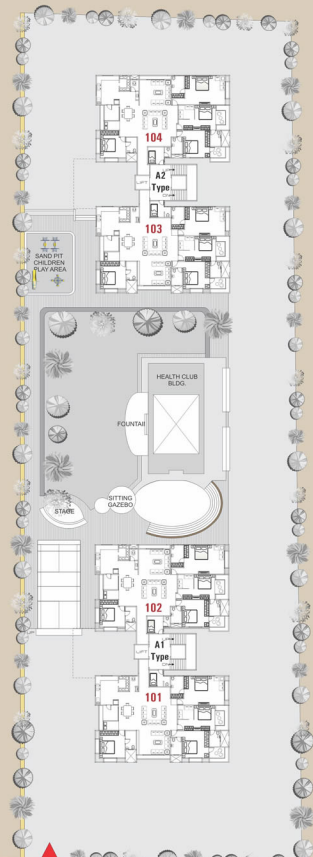
PALACE-I



ENTRY

40.00 FT. WIDE T.P. ROAD

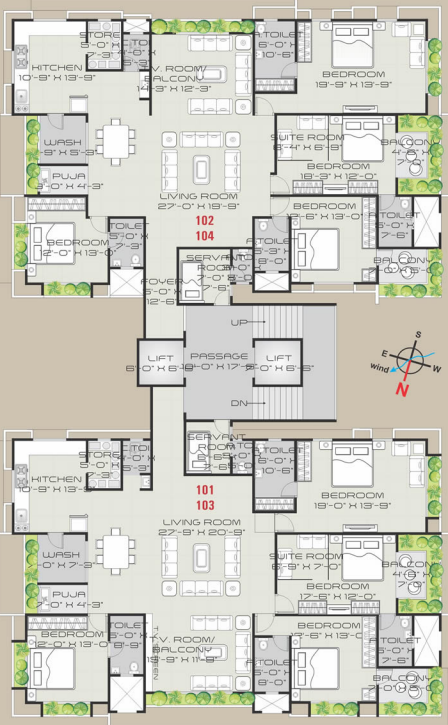
A prime destination  
of kids



ENTRY

40.00 FT. WIDE T.P. ROAD

TYPICAL FLOOR PLAN OF 4BHK



Design with luxury

ROAD

"Space" is the word



| The Spacious Living Room |





# Saiasir

PALACE - I

Elegant looks designed for the residence  
of the select few - who know where to look  
for the best-those who demand a value for  
their money.



| Club Entrance |



  
PALACE - I

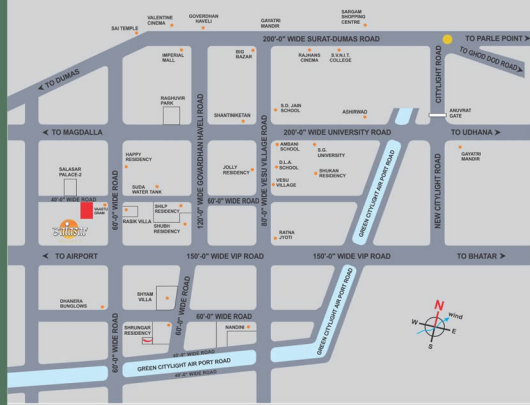
# Satasar

## PALACE - I

### The LOCATION

Strategically located and well connected to the city hot spots and public amenities, this luxurious residential scheme is just 25 minutes drive from the upcoming International Airport. The development is close to the industrial and commercial hubs, the palace is well placed for executing the daily business.

### KEY PLAN



#### PROJECT BY



An ISO 9001:2008 Certified Company

- NOTE :-
- Any amendments in rules & regulation by any authority will be bound to all members.
  - All expenses of legal document, extra stamp duty (if any), service tax, VOT (if applicable), society maintenance, SMC fee will be borne by members.
  - External & internal changes shall not be allowed.
  - Before possession, renovation of main road is compulsory.
  - Members are bound to pay maintenance regularly. Impunity in payment may cause cancellation of booking.
  - Developers reserves right of any changes in the scheme & it shall be bound to all members.
  - This booklet is only for private circulation for general information to the member & shall not form a part of any agreement. It can be changed without prior notice.



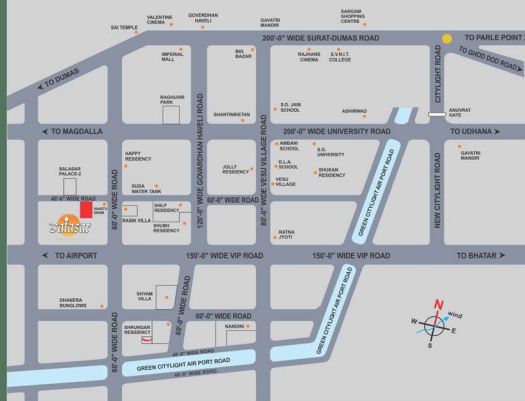
# Satasar

## PALACE - I

### The LOCATION

Strategically located and well connected to the city hot spots and public amenities, this luxurious residential scheme is just 25 minutes drive from the upcoming International Airport. The development is close to the industrial and commercial hubs, the palace is well placed for executing the daily business.

### KEY PLAN



#### PROJECT BY



An ISO 9001:2008 Certified Company

- NOTE :-
- Any amendments in rules & regulation by any authority will be bound to all members.
  - All expenses of legal document, extra stamp duty (if any), service tax, VOT (if applicable), society maintenance, SMC fee will be borne by members.
  - External & internal changes shall not be allowed.
  - Before possession, renovation of main road is compulsory.
  - Members are bound to pay maintenance regularly. Impunity in payment may cause cancellation of booking.
  - Developers reserves right of any changes in the scheme & it shall be bound to all members.
  - This booklet is only for private circulation for general information to the member & shall not form a part of any agreement. It can be changed without prior notice.





# The CLUB HOUSE

A quite haven, a plush abode, an example of wellbeing and  
plethora of world class amenities



**Satasar**  
PALACE - I

## LUXURIOUS ADDITIONAL AMENITIES

**Split A.c.**  
3 Split A.C. in Bedrooms in 4 BHK Flats

**Kitchen Chimney**  
Chimney for cooking in comfort

**Gas Connection**  
Gas Connection in the Kitchen

**Hot Water System**  
Hot water will be available in all bathrooms

**Pressure Pump**  
Water will be available with full pressure by  
pressure pump

**Party Lawn with Multi Functional Stage**  
The Campus has Party Lawn with Multi Functional Stage  
for enjoying Birthday and Marriage Parties Celebrations

**Huge Garden**  
Gazabo For senior citizens, Yoga Park, Fountain,  
Party lawn

**Club House**  
Gymnasium hall, Jacuzzi, Steam bath, Massage parlour,  
Coffee Bar

**Indoor Games**  
Facilities for Billiards, Table Tennis, Chess, Card, Carrom

**Children Park**  
Safe play area with Swings, Slides and Sea-saws for the  
tiny tots

**Aerobics Center**  
Where you can maintain shape of body with  
dance & music

**Drop off Point**  
The Drop off Point for dropping Children near  
by main gate of society for school

**Dish T.V. Connection**  
DISH T.V Connection will be available in all flats

**Wi - Fi Facility**  
You can surf internet through Wi-Fi facility  
round the 24 hours

**Z - Suraksha**  
Entire campus-passage will be covered by  
C.C. T.V. Camera & Wall Sensor





| Spacious & well-ventilated Bedroom |

## BENCHMARK AMENITIES

### Flooring

Vitrified double charged slab of 48 inch x 36 inch in living room having Italian effect and Wooden Flooring in Master Bedroom and 24" x 24" fully granamite tiles in all other rooms including Kitchen & Dining of standard company

### Kitchen

Black Granite Platform with S.S. Sink having drain board of Nirali Brand and Designer tiles up to lintel level

### Bath-Room

Luxurious Bath fittings of Jaguar Brand/ Equivalent Std. Co. & Designer tiles up to lintel level with wall mount commode & wash basin with half Pedestal of Cera Brand/ Equivalent Std. Co. & Decorative glass wash basin in common area

### Store

Kota stone racks with Fully glazed tiles

### Door

Decorative main door & other water proof flush doors of standard company with Black granite frame

### Window

Powder coated Aluminium section with reflective glass along with Granite Seal & M.S. safety grill in the windows

### Enamel

- Well finished putty on internal wall
- Textured on exterior wall with acrylic paint
- Acrylic colour in Common areas

### Electrification

Concealed circuit wiring with Modular switches & M.C.B. of Anchor Brand

### Plumbing

Plumbing by world famous Astral Pipes / Equivalent Std. Co. & Drainage by Astral pipes



## CAMPUS FEATURES

### Entrance Gate

Gorgeous entrance gate on 40 ft. wide T.P. road

### Two flats on each floor with servant room in 4 BHK

There are only two flats on each floor of building having separate servant room for each flat & flat is open from all four sides

### Reception & Foyer

High interior entrance foyer with wide reception & waiting lounge with Decent name plate & Shoe polish machine in the foyer

### Video door phone

Video door phone with Intercom facility from Reception to flat & flat to flat

### Generator Facility

Silent Generator with 10 normal points in each Flat & L.R. Water pumps, Common passage & parking lights

### Anti Termite Treatment

Entire campus will be treated by pest Control treatment

### Allotted Parking

Assured covered two car parking in each flat. One car parking chargeable.



### Garbage Shaft

The Garbage shaft for Waste dropping

### Compound Wall

Well designed Compound wall around the campus with decorative lights

### Road

Well designed Pavers block road

### Security Cabin

Well designed Security cabin on entrance gate

### Structural Design

Considering last earthquake proof

### Fire Safety

Fire Safety provision as per authority Norms

### Water Tank

Underground water tank in the campus

### Lift

High interior automatic two elevators of standard Company

### Tile

Loanable clear tile with B.U.C.

A tower of strength & comforts for reviving and  
rejuvenating your tired spirits - everyday



Architect  
**DESIGN WORLD**  
Ar. Pravina Surti (M. Arch.)

Structure Designer  
**VRAJLAL AMBALIYA**

Technical Consultant  
**VERTEX**

Advisor  
**ASODARIA ASSOCIATES** 