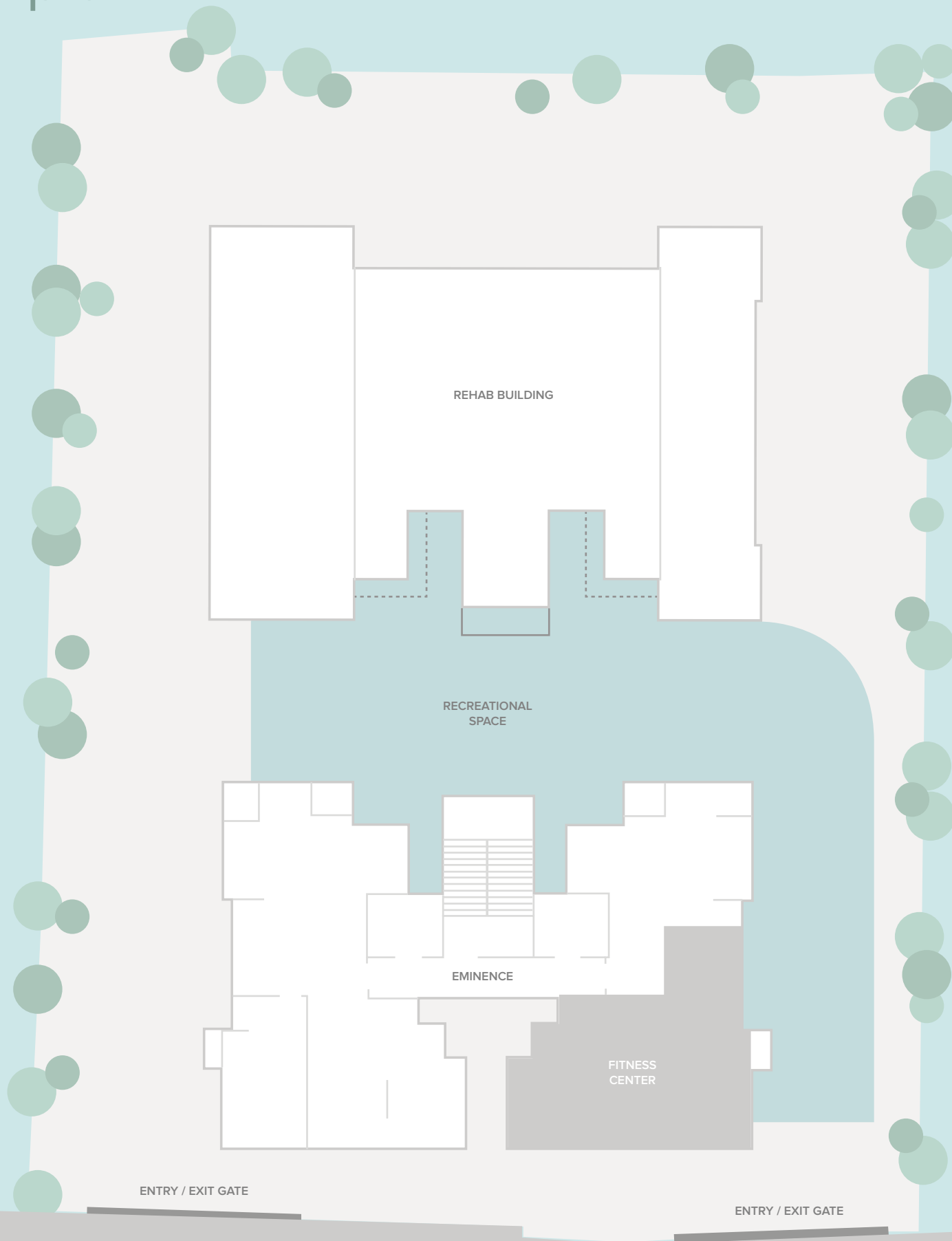


MARATHON
Eminence

Mulund (W)

Masterplan

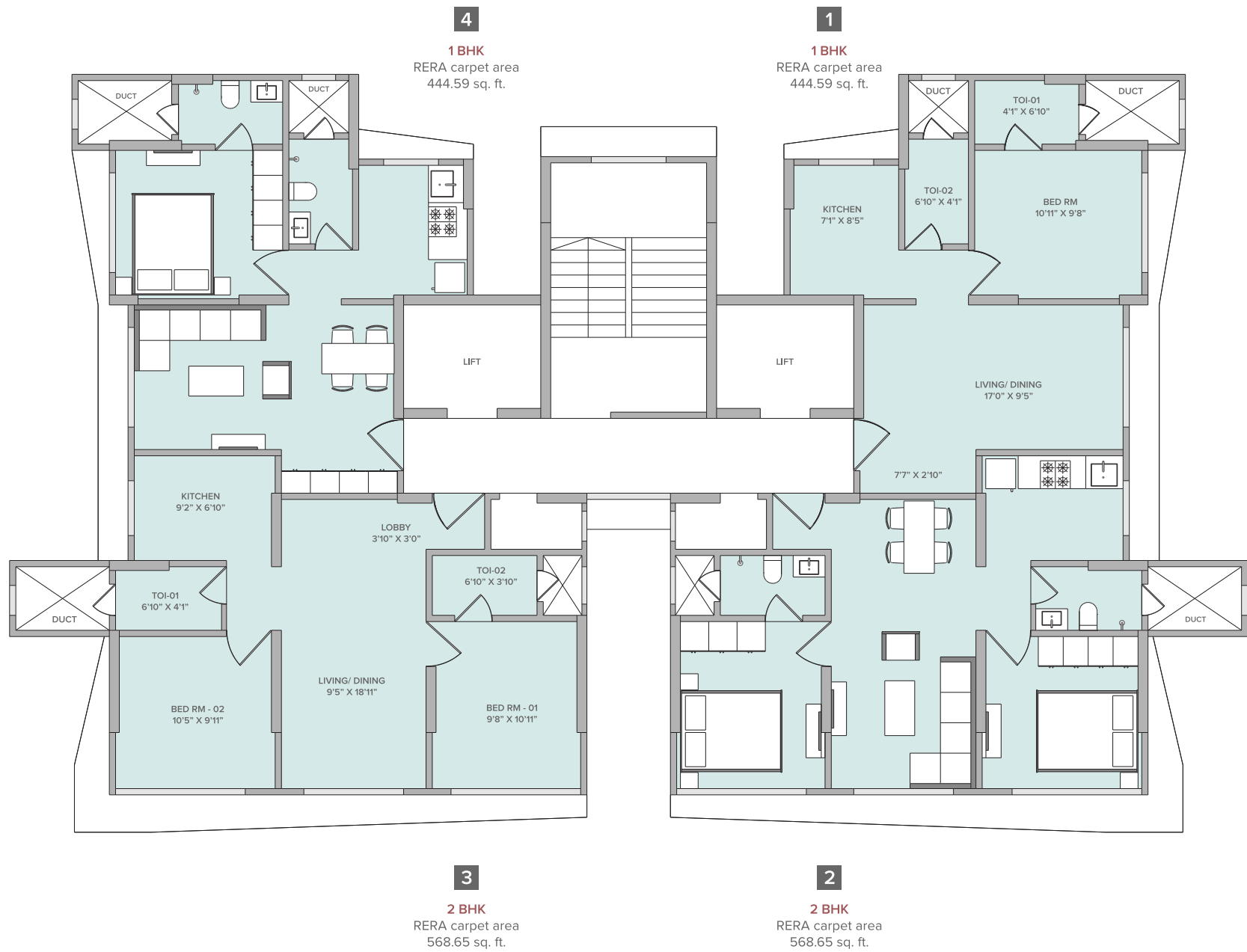


ENTRY / EXIT GATE

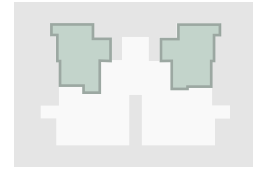
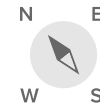
ENTRY / EXIT GATE

DADA SAHEB GAIKWAD ROAD

Typical Floor Plan

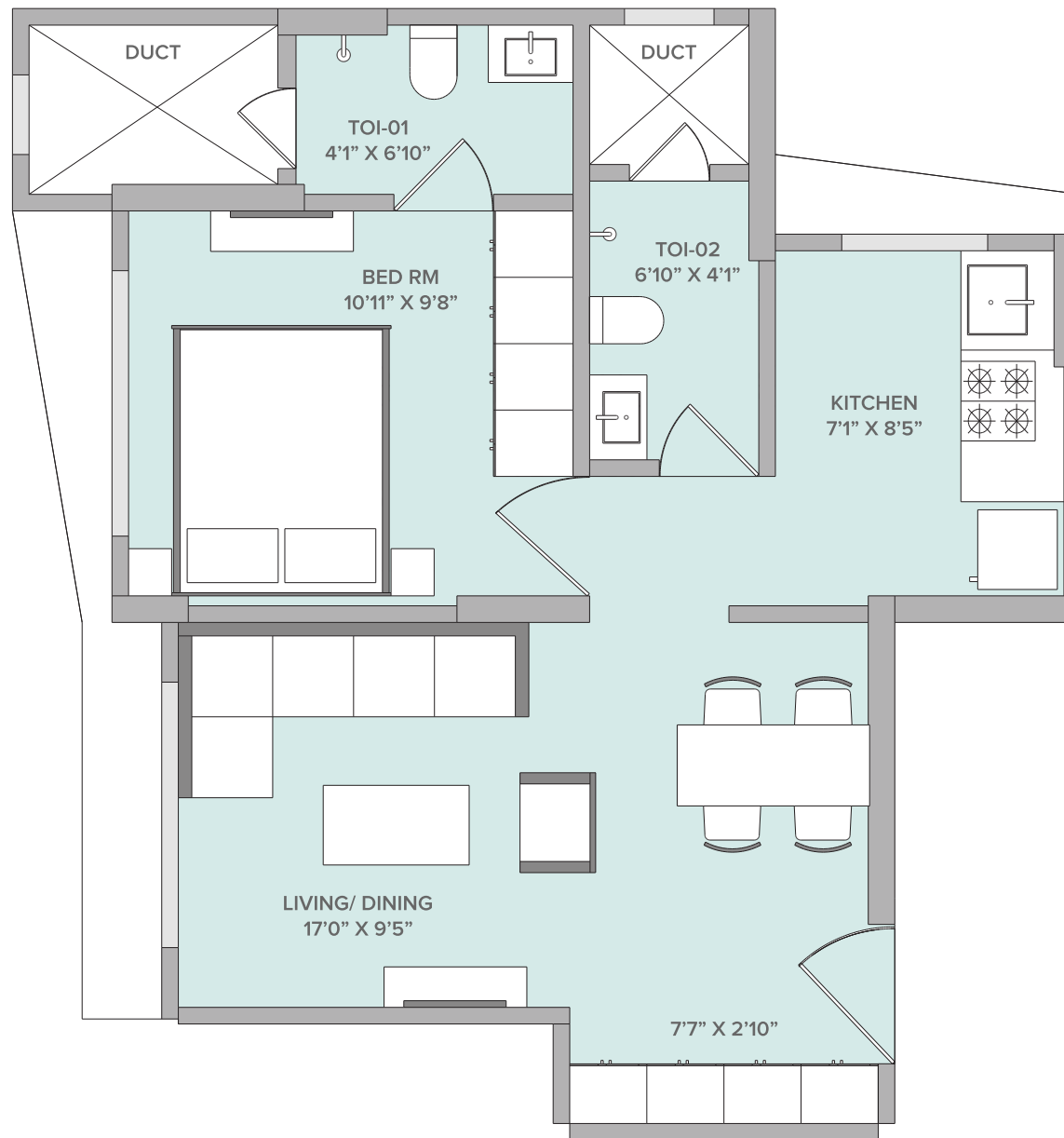


1 BHK Unit Plan

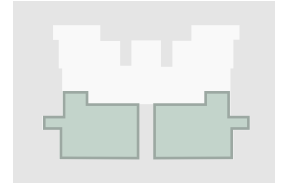


1 & 4

RERA carpet area
444.59 sq. ft.

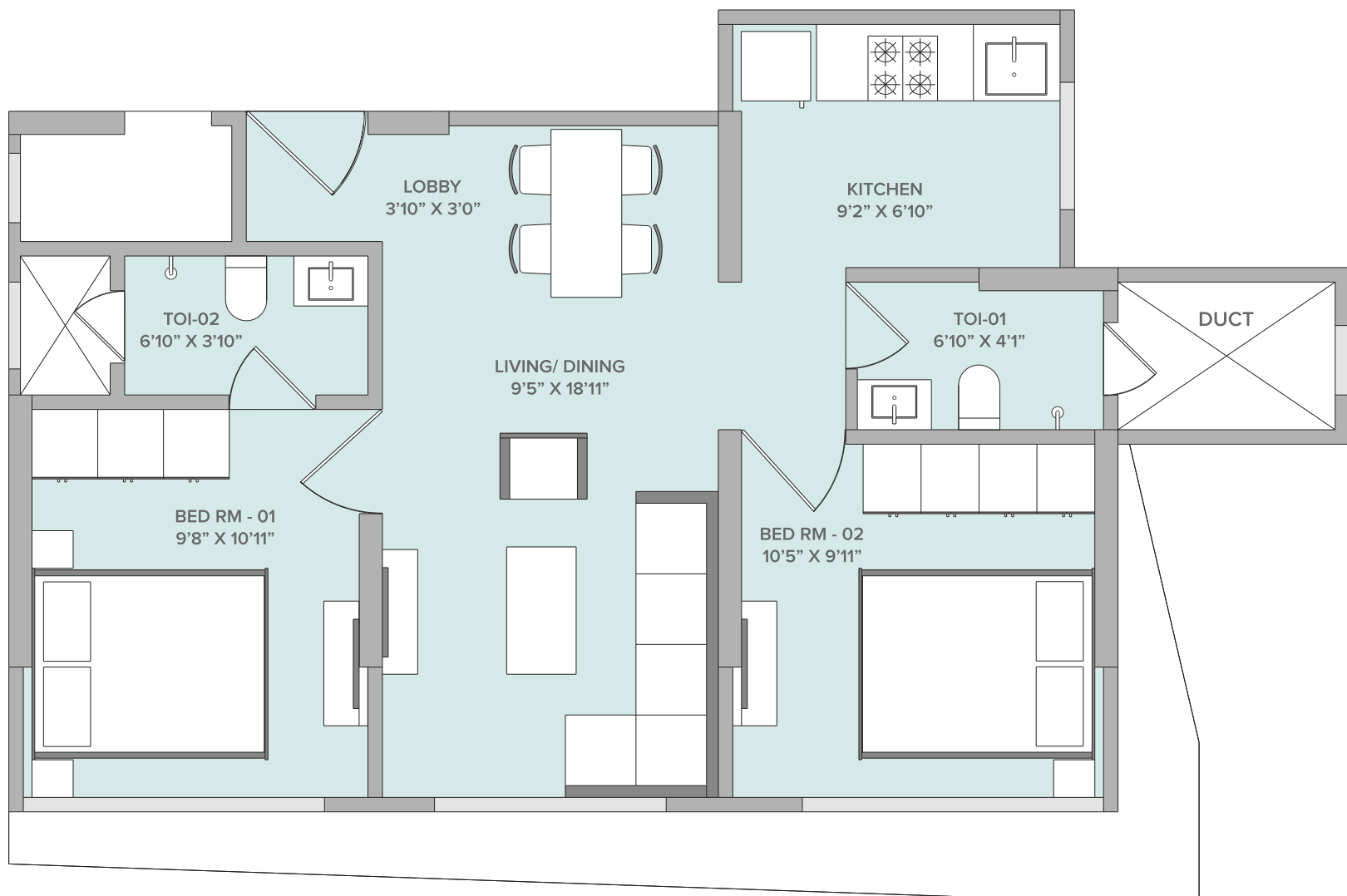


2 BHK Unit Plan



2 & 3

RERA carpet area
568.65 sq. ft.





The project has been registered via MahaRERA registration number: P51800016063 and is available on the website <https://maharera.mahaonline.gov.in>

Disclaimer:

Marathon Eminence is developed by Nexzone Buildcon LLP (A part of Marathon Group Company).

The rendered images of the proposed Residential Flat are of a specific configuration and for representation purpose only. The Promoter/ developer shall not be required to provide any furniture, items, goods, amenities etc as displayed in the picture/s.

The views depicted in the pictures are as presently available from some specific flats and they may vary over period of time for reasons beyond the control of the Promoter.

The amenities shown herein are only indicative and they are subject to change/s based on approval from competent authorities.

Maps may not be to scale and distances are as available on Google Maps.

All dimensions mentioned in the drawings may vary due to construction contingencies, site conditions and changes required by regulatory authorities.