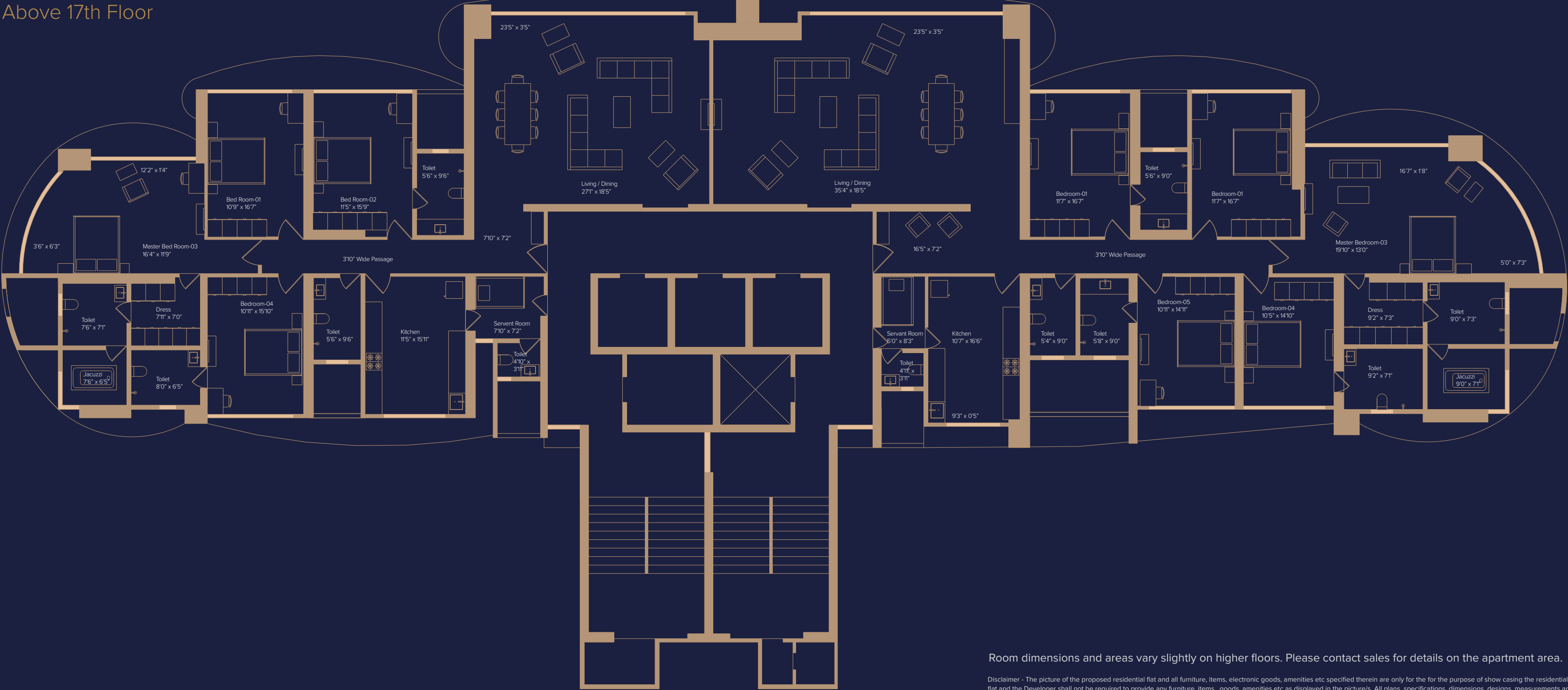


MARATHON
Monte Carlo
Mulund (W)

Floor Plans

Typical Floor Plan Above 17th Floor



Room dimensions and areas vary slightly on higher floors. Please contact sales for details on the apartment area.

Disclaimer - The picture of the proposed residential flat and all furniture, items, goods, amenities etc as displayed in the picture/s are only for the purpose of show casing the residential flat and the Developer shall not be required to provide any furniture, items, goods, amenities etc as displayed in the picture/s. All plans, specifications, dimensions, designs, measurements are indicative and are subject to change. All plans are subject to modifications / alterations / changes as per suggestions of the Architect or local authorities. Minor variations upto +/- 3% in actual carpet areas may occur on account of site conditions / columns / finishes etc. Building design and amended plans are subject to approval from concerned authorities.

Typical Floor Plan

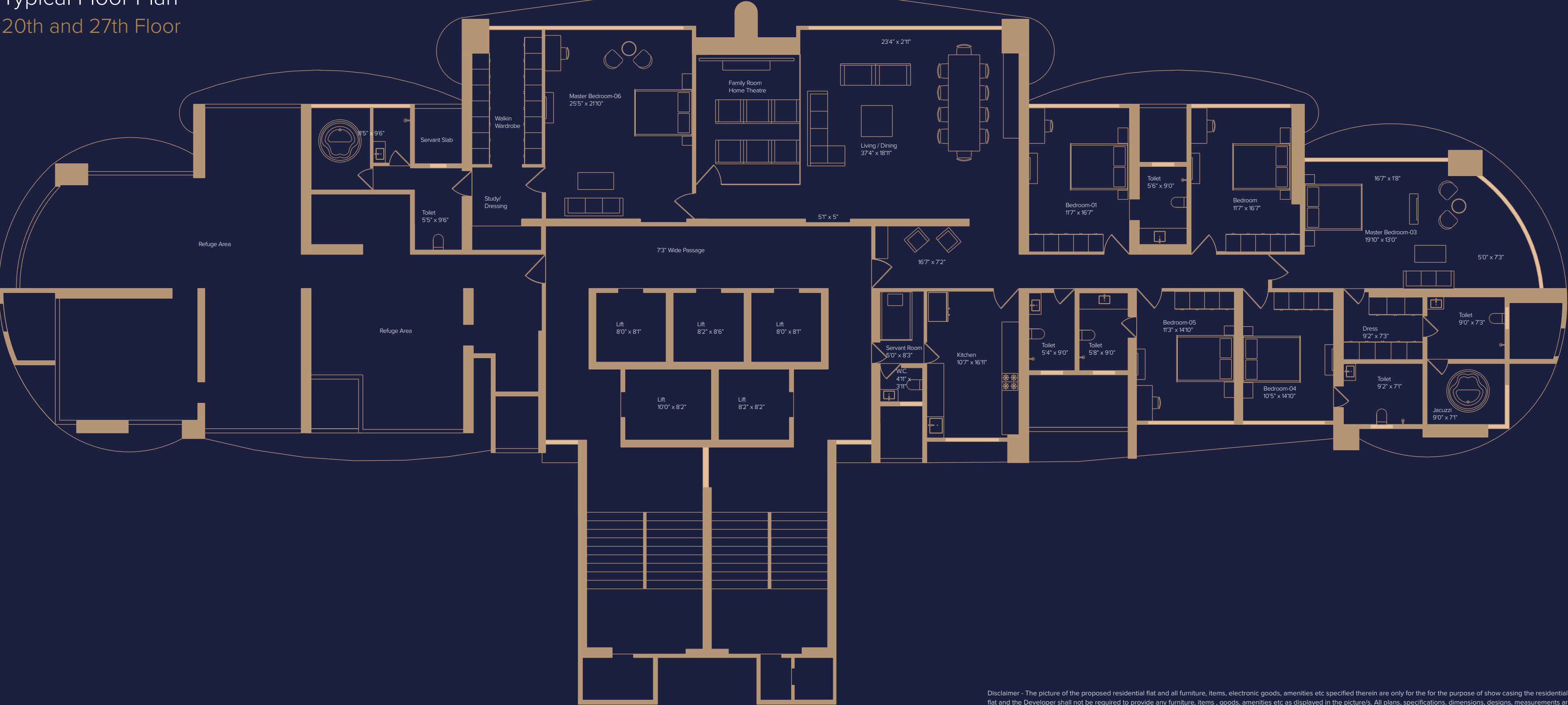
Below 17th Floor



Disclaimer - The picture of the proposed residential flat and all furniture, items, electronic goods, amenities etc specified therein are only for the purpose of show casing the residential flat and the Developer shall not be required to provide any furniture, items, goods, amenities etc as displayed in the picture/s. All plans, specifications, dimensions, designs, measurements are indicative and are subject to change. All plans are subject to modifications / alterations / changes as per suggestions of the Architect or local authorities. Minor variations upto +/- 3% in actual carpet areas may occur on account of site conditions / columns / finishes etc. Building design and amended plans are subject to approval from concerned authorities.

Typical Floor Plan

20th and 27th Floor



Disclaimer - The picture of the proposed residential flat and all furniture, items, electronic goods, amenities etc specified therein are only for the purpose of show casing the residential flat and the Developer shall not be required to provide any furniture, items, goods, amenities etc as displayed in the picture/s. All plans, specifications, dimensions, designs, measurements are indicative and are subject to change. All plans are subject to modifications / alterations / changes as per suggestions of the Architect or local authorities. Minor variations upto +/- 3% in actual carpet areas may occur on account of site conditions / columns / finishes etc. Building design and amended plans are subject to approval from concerned authorities.



MARATHON



RERA No: P51800002662 Visit maharera.mahaonline.gov.in for details.

Disclaimer: The details shown herein are only indicative and are subject to change/s based on approval from competent authorities. The image shown is an artist's impression of Marathon Monte Carlo. The image is for representation purpose only. Customers are requested to apprise themselves of all the necessary details prior to making any purchase decisions. Project funded by ICICI Bank.