

## Location Map



Victoria

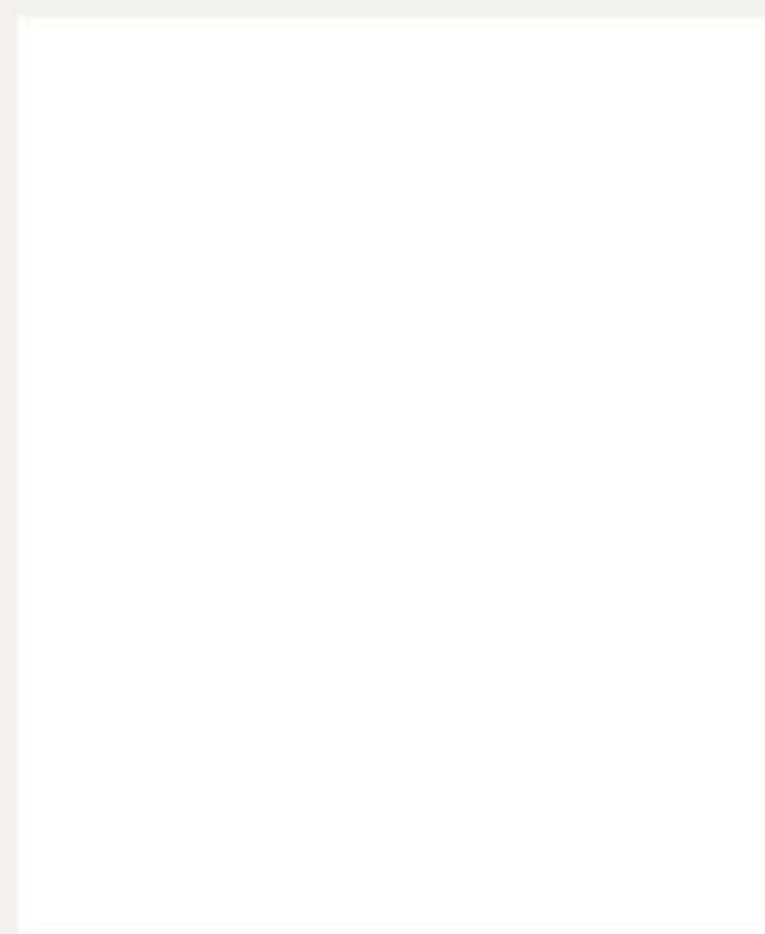
### Promoters :



Rohan Corporation  
 Balmatta Road, Bendorewell  
 Mangaluru 575 002. Karnataka, India  
 Help Desk : +91 824 2431510  
 Fax : +91 824 2439578  
 Email : info@rohancorporation.in  
 Website : www.rohancorporation.in

### For Bookings :

+91 984 56 07 726  
 +91 984 56 07 724  
 +91 984 54 00 595

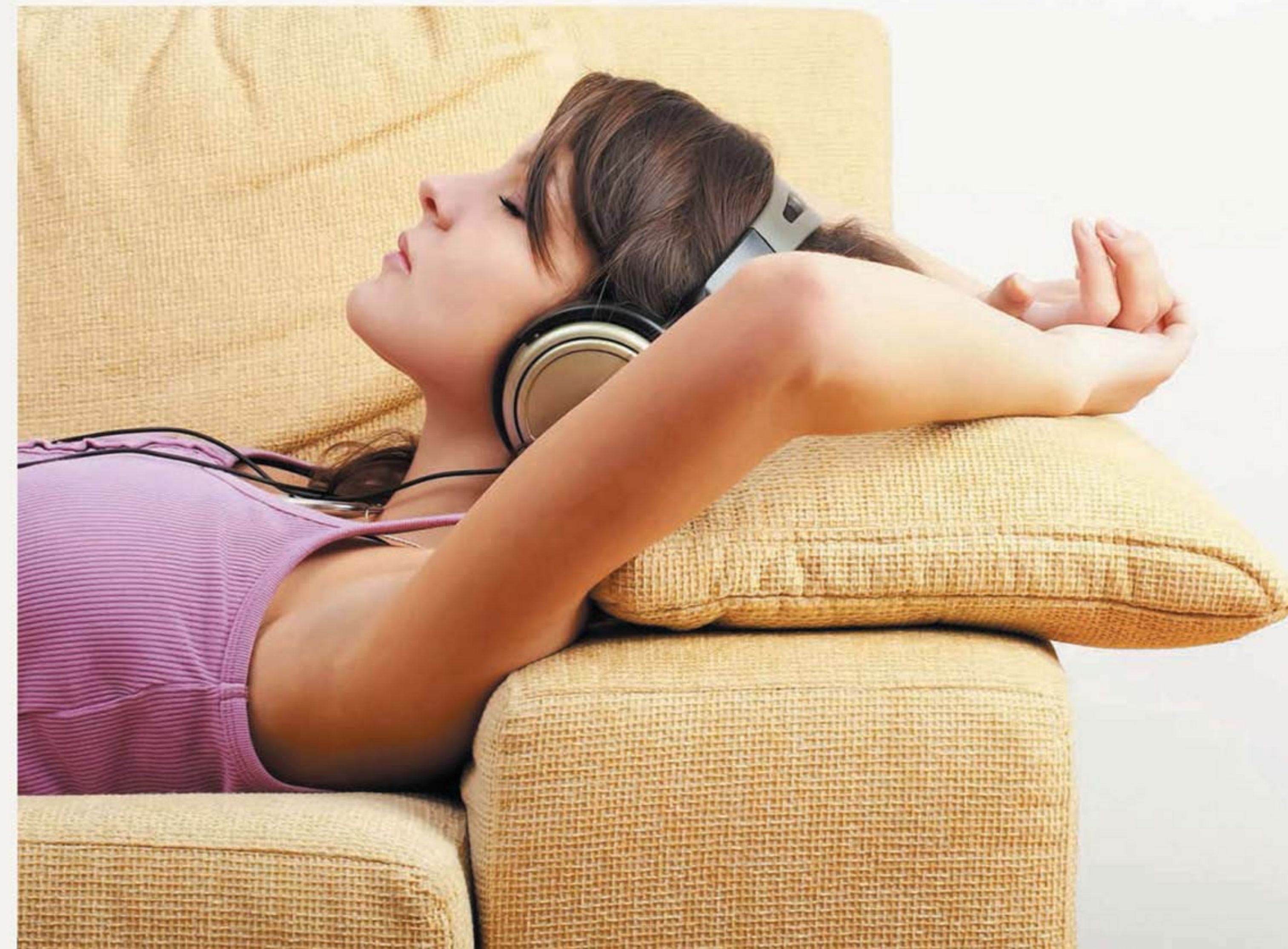


# Victoria

## LUXURY APARTMENTS



Valencia, Mangaluru



*Birth of a Vision*

Vision is the art of seeing  
 what is invisible to others





# Victoria

LUXURY APARTMENTS

*Well calibrated apartments that fit seamlessly into your lifestyle*

This gated community is placed at the heart of a pristine location of Valencia, Mangaluru. Driven by design, the meticulous planning infuses spice into the space. Whether yours is a nuclear or joint family, the smartly calibrated apartments fit seamlessly into your individualised lifestyle. The upscale class reflects in quality of materials utilised to create the ambience you always wanted from your dream home.

From glorious living to luxurious features, the project has everything you need to make a lifestyle statement. The address accentuates warmth of a suburb with easy connectivity to city. The well-designed, superior construction sets the benchmark. After all, at Property Infra Tech India Pvt. Ltd., developing quality homes is our life, and to enhance your lifestyle is our passion





# Ground Floor



## Area Statement

Flat No. 1 (3 BHK)	1500 Sq.ft.
Flat No. 2 (3 BHK)	1465 Sq.ft.
Flat No. 3 (3 BHK)	1500 Sq.ft.
Flat No. 4 (3 BHK)	1650 Sq.ft.



# Typical Floor Plan

1st To 4th Floor



## Area Statement

Flat No. 1 (3 BHK)	1735 Sq.ft.
Flat No. 2 (3 BHK)	1790 Sq.ft.
Flat No. 3 (3 BHK)	1810 Sq.ft.
Flat No. 4 (3 BHK)	1720 Sq.ft.





# Highlights

- Visitor's Lounge
- Non addressable firefighting system
- Electronic access card system
- One fully automatic elevators with ARD attachment
- Reticulated gas connection on extra cost
- 24X7 water and electricity provisions
- Telephone with Intercom
- UPVC windows with MS grill for protection
- Elegantly designed melamine main door
- Superior quality electric wires (Finolex / RR Kables/ V Guard)
- Modern type sanitary and drainage installation
- Excellent quality of sanitary ware (Euro / equivalent)
- Good quality 600 mm X 600 mm vitrified flooring
- Attractive ceramic tiles for toilet wall and anti skid tiles for flooring
- Ceramic / Granite flooring in common areas
- Comfortable car parking space
- Solar water heater system at extra cost
- Gymnasium & Children play area with equipment on the Terrace



# Specification

## Bedrooms

- Power supply for AC (for all bedrooms)
- Two way light control in all bedrooms
- Telephones, TV point and Cable TV connections in all bedrooms

## Balconies

- Separate drainpipe to drain out the water
- Elegant balcony railing with safety measures

## Drawing /Dining

- TV point and telephones / intercom connections / Cable TV Connections
- Wash basin provisions
- Power supply for split AC system

## Kitchen

- Adequate electric power point provision for water purifiers
- Provision for exhaust fan
- Granite platform with stainless steel sink
- Plumbing and drainage connection with power point for washing machine
- Power point for refrigerator and microwave oven

## Elevator

- ARD attachment
- Risk free operation
- Emergency phone facility

# Our Creations

## Ongoing Projects



Primero - Padil, Mangaluru



Ventura - Bejai Main Rd, Mangaluru



Micasa - Bejai, Mangaluru



at Attavar, Mangaluru



Zorion Jeppinamogaru, Mangaluru



at Kadri Kambala, Mangaluru



Golden Hills Layout at Pakshikere, Mangaluru

## Completed Projects



Bellissima at Mallikatta, Mangaluru



Hill Crest at Ladyhill, Mangaluru



Bianca at Bejai, Mangaluru



Infinity at Kankanady, Mangaluru



Exotica Near S.C.S Hospital, Bendore, Mangaluru



Daiji World at Bondel, Mangaluru



Catalonia II at Kulshekar, Mangaluru



Catalonia I at Kulshekar, Mangaluru



Luminus at Kulshekar, Mangaluru



Siliconia at Kuttar, Mangaluru



Odyssey at Arya Samaj Road, Mangaluru



Global Court at Kuntikana, Near A.J Hospital Mangaluru



Plasma Habitat at Kulshekar, Mangaluru



Peters Cote at Balkashrama Road, Mangaluru



Pam Arcade at Kottara, Mangaluru



Highgroove at Bejai, Mangaluru



Serenity at Bejai, Mangaluru



Concord at Fainir, Mangaluru