



ADARSH DEVELOPERS
Beautiful Homes For Beautiful People

SPECIFICATIONS

STRUCTURE:

- Seismic zone II compliant RCC framed structure.

PLASTERING:

- All internal walls smoothly plastered with lime rendering.
- External plastering with sponge finish.

FLOORING:

- Vitrified tiles in living, dining and all the other bedrooms except master bedroom of all flats.
- Laminated wooden flooring in master bedroom of each flat.
- Vitrified tile flooring in kitchen.
- Vitrified flooring in all floor lift lobbies.
- Kota/tandoor stone for staircase.

TOILETS:

- Ceramic tiles dado for all toilets for 2.1m (7 feet) height.
- White color EWC & washbasin with granite counter top & mirror in all toilets except SWC.
- Glass shower cubicle in master bedroom toilet.

DOORS:

- Main door – Engineered door frame & shutter.
- Bedroom doors, kitchen door & toilet doors - engineered door frames & shutters.
- UPVC sliding doors for living room to balcony and bedroom to balcony door.

WINDOWS:

- UPVC sliding windows

KITCHEN:

- Granite platform with stainless steel single bowl and vegetable bowl with drain board.

PAINTING/POLISHING:

- Interior: Plastic emulsion paint.
- Exterior: Acrylic emulsion paint.

ELECTRICAL:

- One TV point in living and all bedrooms. (Signal quality to be maintained by the client/service provider).
- Geyser in all toilets except for SWC.
- Exhaust fans in all toilets.
- Telephone points in all bedrooms & living area.
- Electrical AC point in all bedrooms & living area.
- 2 BHK & 3 BHK flat will be provided with power supply of 5 kW & 6kW respectively.

BACK UP GENERATOR:

- Stand by generator for lifts, common area lighting. Full power back up for each apartment.

AMENITIES

- Gymnasium
- Community Hall



Artist impression and for representation purpose only.



ADARSH DEVELOPERS
Beautiful Homes For Beautiful People

Sales Lounge: #3, Outer Ring Road, Kadirenahalli,
Banashankari II Stage, Bengaluru-560070. Tel: 91-80-30196171
email: enquiry@adarshdevelopers.com www.adarshdevelopers.com



RERA No. PRM/KA/RERA/1251/310/PR/170915/000332

This leaflet is purely conceptual and does not constitute a legal offering. Adarsh Developers reserves the right to add, modify or delete the images and content at its discretion.

**ADARSH
CITRINE**

A world, all your own

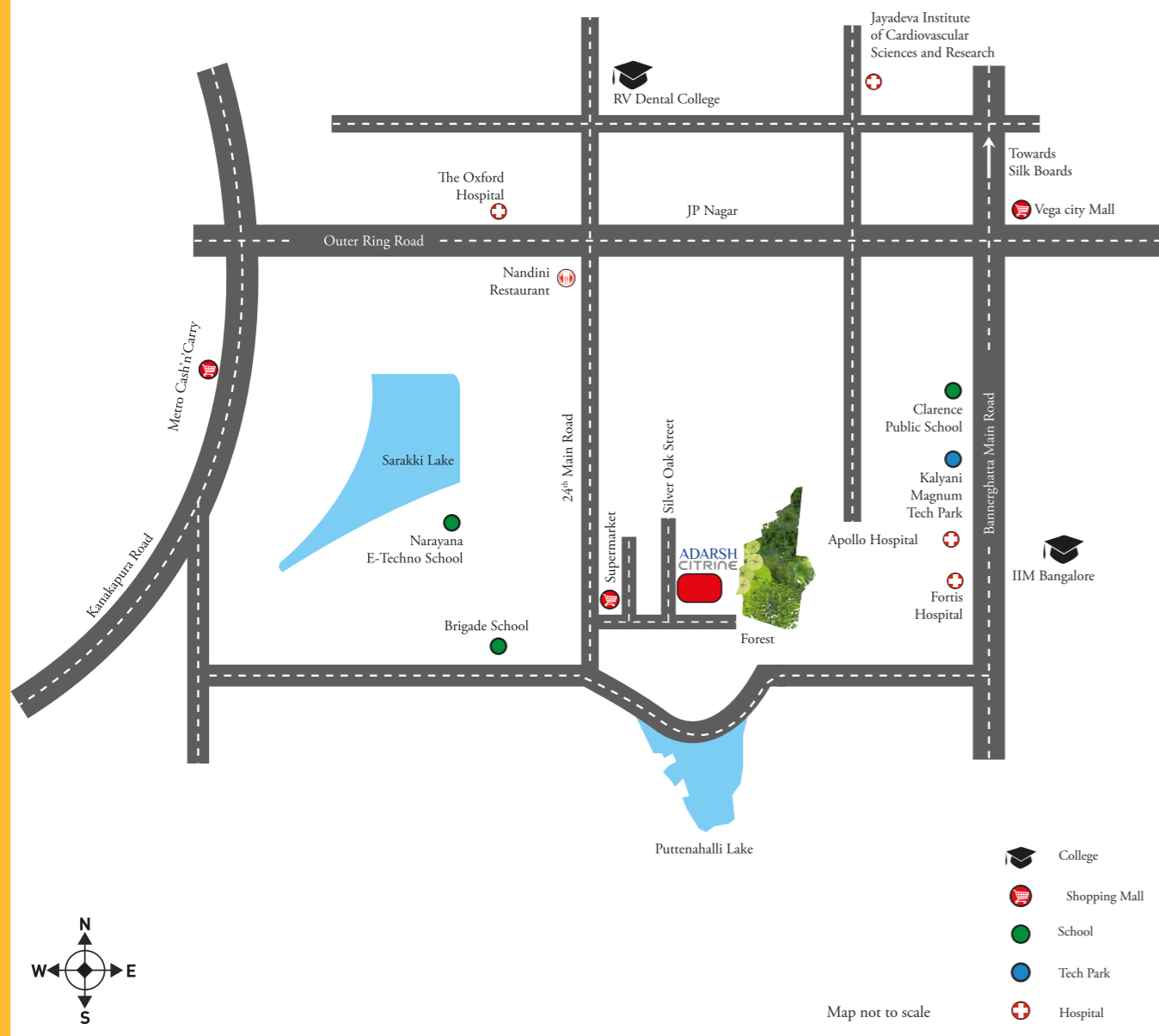
ADARSH CITRINE

A home is more than a sanctuary. It is a place that begins where the rest of the world ends. It is a place where words come easy, and laughter, without inhibition.

Adarsh Citrine offers homes that exude exclusivity. With only 64 apartments, at Citrine, you will find a home that is truly your own. Spread over just 4 floors, Citrine offers 2 BHK and 3 BHK homes. A community that brings with it the comfort of familiar faces, neighbours who recognize you, and the delight of camaraderie.

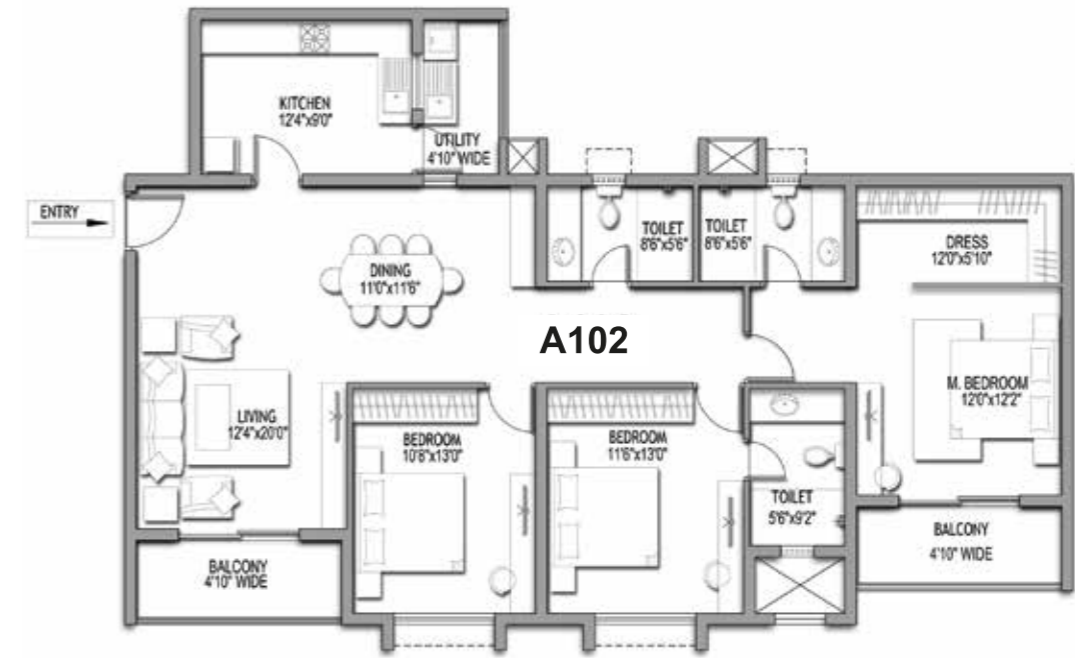
Adarsh Citrine is located in J. P. Nagar 7th phase in South Bengaluru with green environs and close proximity to the Puttenahalli Lake.

LOCATION MAP



BLOCK - A

3 BEDROOM

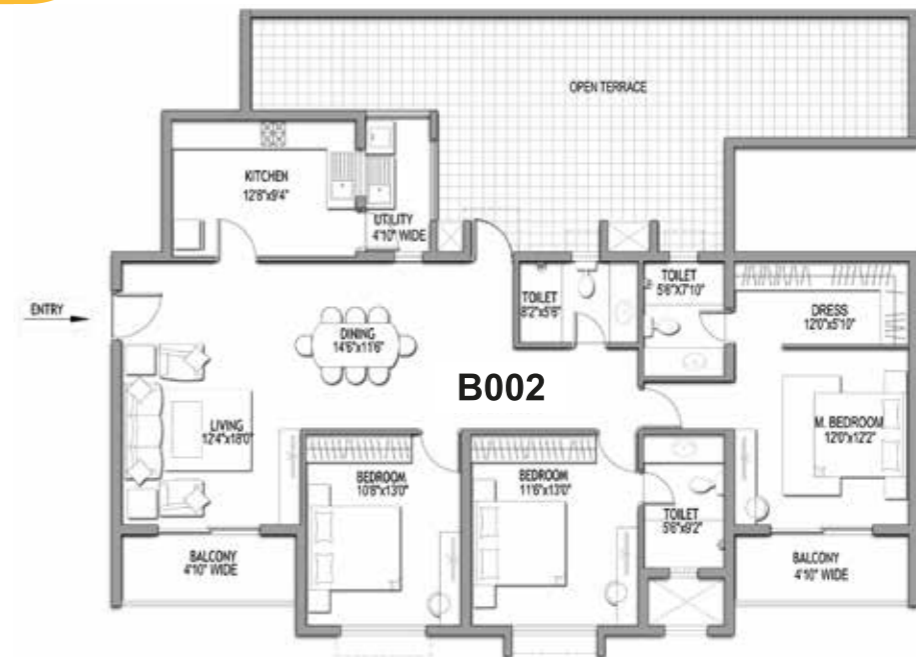


SBUA		CARPET AREA	
SQ. MTS.	SQ. FT.	SQ. MTS.	SQ. FT.
176.12	1895	120.06	1292



BLOCK - B

3 BEDROOM



SBUA		CARPET AREA	
SQ. MTS.	SQ. FT.	SQ. MTS.	SQ. FT.
190.52	2050	118.05	1270



The furniture/fixtures shown in the floor plans are purely indicative and are not a part of the actual offering. Any interested party should verify all the information including designs, plans, specifications, facilities, features, payment schedules, terms of sales etc independently with the 'agreement of sale' and/or Adarsh Developers prior to concluding any decision for buying in this project.