

*Pearl*



*Where Life Becomes Easy...*

*Don't give a second thought  
because opportunity  
never knocks twice...*





Pearl

Pearl  
WINDSOR **WH** HOMES

*Where Life Becomes Easy...*

*Dream of your own home  
now fulfilled with  
Pearl Windsor Homes  
at  
Great location...  
Great price...*

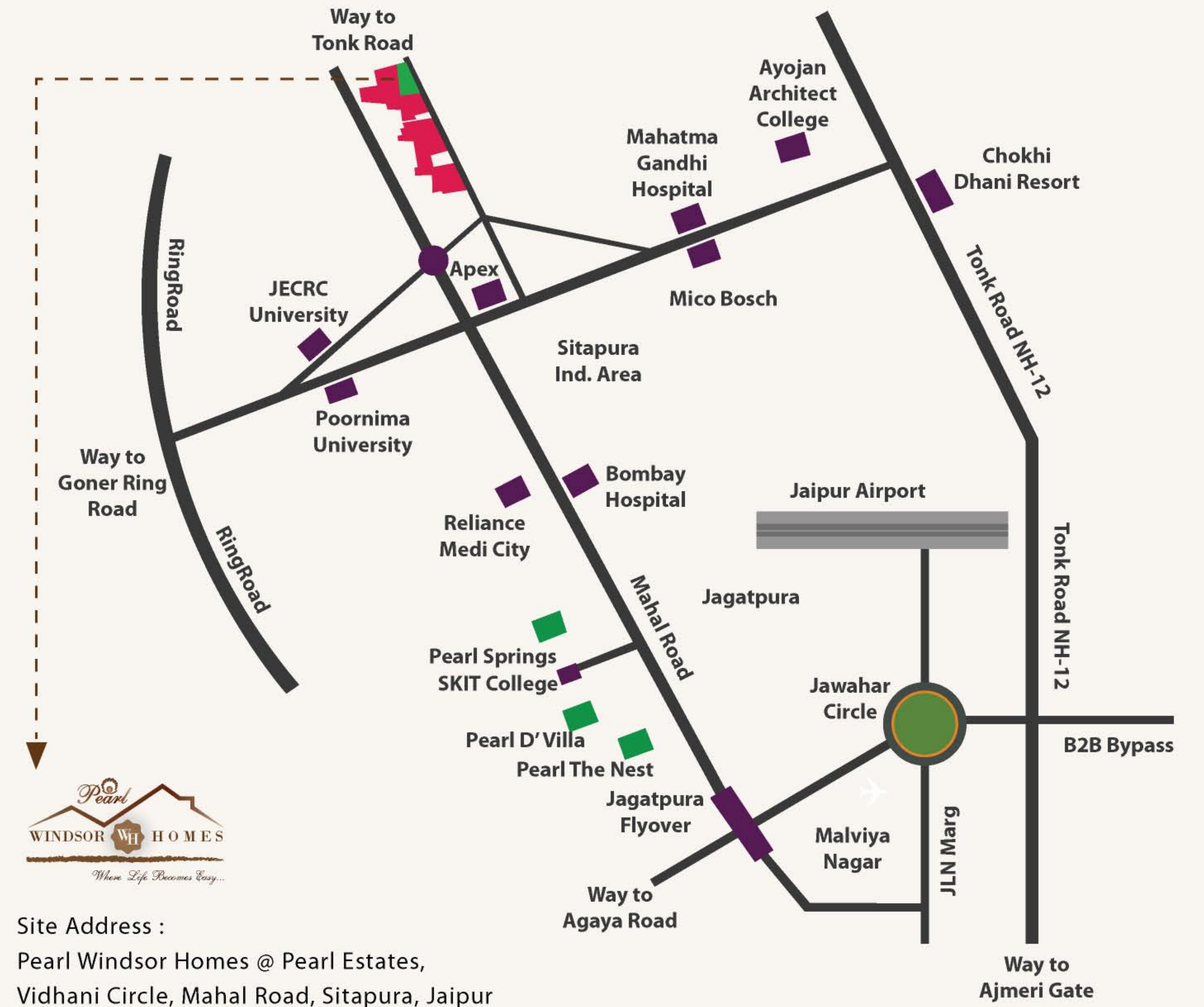


## Project specifications

<b>PROJECT FEATURES</b>	Earthquake Resistant RCC Framed Structure Designed As Per Seismic Zone II. Water Harvesting Underground and Overhead Water tank with adequate water supply. Power back up for common areas 2 Automatic Lifts of Otis/Kone/Schindler or equivalent make Intercom facility CCTV cameras at strategic places for surveillance Fire Fighting Equipments
<b>FLAT FEATURES</b>	Vitrified Flooring Acrylic Distemper on Walls and Ceiling. Windows of UPVC/ Aluminium with Wire Mesh.
<b>WOOD WORK</b>	Tough ISI Mark 30 MM Flush Doors Duly Painted. Well Designed Main Door Of 35 MM Thickness With Magic Eye. Brass/SS Fittings of Good Quality on Doors.
<b>KITCHEN</b>	Marble Working Counter With SS Sink 2' Tile Dadoing Above The Counter Concealed Copper Tubing For Gas Line
<b>TOILETS</b>	Ceramic Tiles In Toilets Upto 7' Height On Walls Anti Skid Ceramic Tiles On Flooring CP Fittings of premium grade C.P. Accessories In All Toilets Sanitary Wares Of Parryware/Cera/Hindware or equivalent make Mirrors
<b>ELECTRICAL</b>	Modern Electrical System With Concealed ISI Grade Copper Wiring Of Finolex/RR/Polycab or Equivalent Make Premium Quality Modular Switches MCB And DB's As Per ISI Standard Provision For Inverters In Each Flat TV / Telephone / A.C. / Cooler Points at Appropriate Places

## Location MAP

(map not to scale)



## Location ADVANTAGES

- Project Entrance on 200 feet Mahal Road at Sitapura , just 5 minutes from Jagatpura flyover.
- Strategically Located within a radius 3 kms of Education Institutes like JECRC University, Poornima University, Mahatma Gandhi Medical College, Ayojan Architect College, SKIT, etc...
- Sitapura is also Major hub of many corporate companies like Genpact, Metacube, Infosys, Bosch, Genus, Indane gas etc.and RIICO industrial Area which are located nearby.
- Healthcare centers like Mahatma Gandhi Hospital, Jeevan Raksha Hospital, Narayan Hridayalaya are fully operational and Bombay Hospital, Reliance medicity, and Government Hospital will soon be operational near Pearl Windsor Homes.
- Easy access to City transportation

## Distance Chart

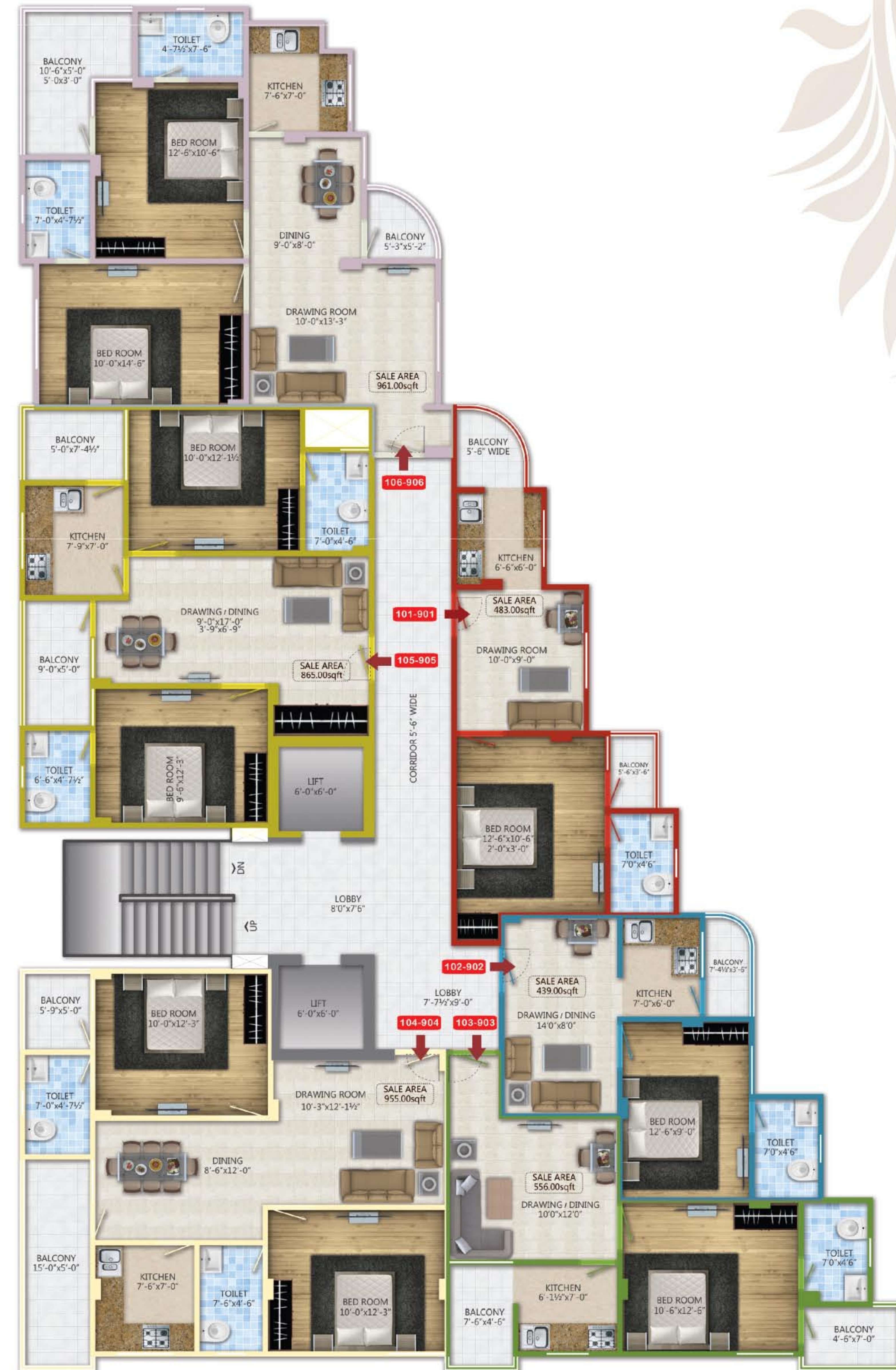
From Ricco Industrial Area	1.0 kms.
From Mahatma Gandhi hospital	0.5 kms.
From Chokhi Dhani resort	2.0 kms.
From Jagatpura railway station	6.0 kms.
From Jawahar circle	7.0 kms.
From Airport	6.0 kms.

STILT FLOOR WITH PARKING PLAN



TYPICAL FLOOR PLAN

(1st to 9th FLOOR)





**1** EXCELLENCE IN  
DESIGN & SPACE  
MANAGEMENT  
RESIDENTIAL  
**No. 1 2012**  
DAINIK BHASKAR



Shree Ashok Gehlot, (Rajasthan)  
giving Honor to Director Mr. Praveen Jain & Mr. Vivek Jain of Pearl Spytech Group

**SPYTECH BUILDCON PVT. LTD.**

The Pearl Spytech group has established its reputation in over 50 projects comprising of 9 projects under development and 41 completed projects. These include Residential Flats, Group Housing, Integrated Township, and Commercial Complexes in Jaipur.

Since its inception, Pearl Spytech group thrived to transform innumerable realty dreams into reality. Its vision has inspired the group to create residential edifices for all cross-sections of the society. With its onward march towards excellence, the group intends to induce innovative changes in the lives of people at basic level and create lifestyle avenues for the people at higher level. The group's strength is satisfied customers, investors. This is due to Pearl Spytech's quality consciousness and prompts after sales service.

*Redefining Lifestyle.....*

## OUR MILESTONES



### Completed Projects



### Ongoing Projects



### Upcoming Projects





**SPYTECH BUILDCON PVT LTD.**

**Corp. Off:** "Geetansh" Class of Pearl, 5th Floor,

K-48-49 Income Tax Colony, Durgapura, Tonk Road, Jaipur

**T :** +91 141-2552929 | **M :** +91 97999 31000

**E :** [marketing@pearlspytech.com](mailto:marketing@pearlspytech.com) | **W :** [www.pearlspytech.com](http://www.pearlspytech.com)