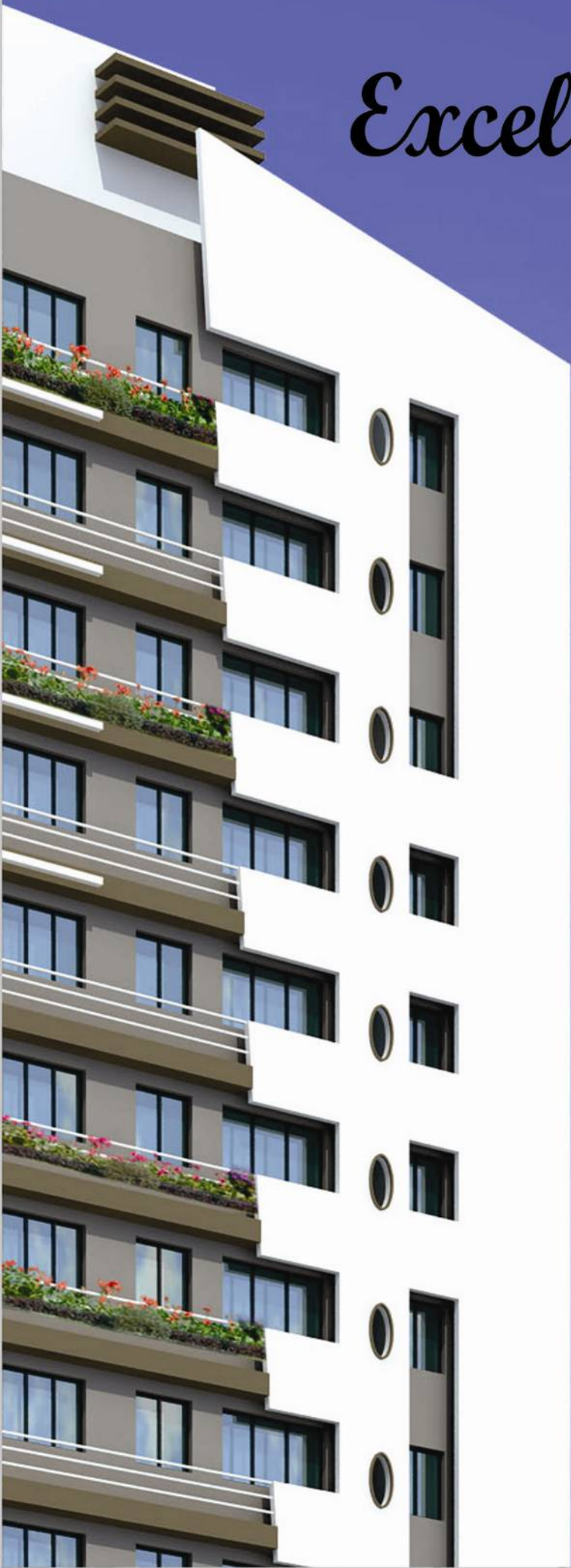
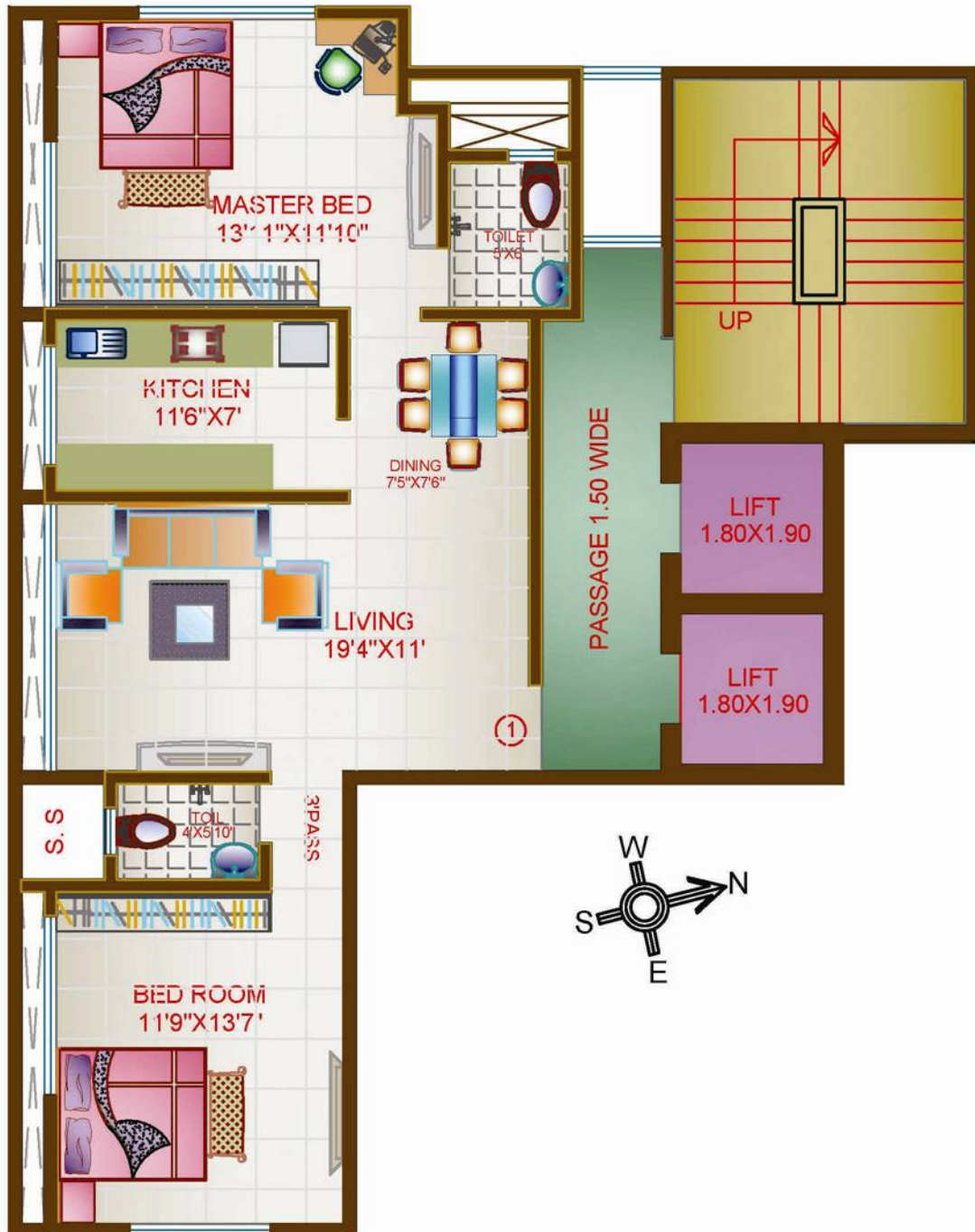


Excella Residency



Typical Floor Plan



Amenities

RCC

- Earthquake resistant structure

Security

- Fire Fighting & Detection System
- Latest security system for highest security with intercom system.
- CCTV Cameras for 24 x 7 Security.

Flooring

- Mirror Polished Vitrified Tiled Flooring

Ceiling

- Decorative cornices in P.O.P for living room, Dinning and lobby

Elevator

- 2 High Speed Elevators

Parking

- Well planned ample car parking spaces.

Communication

- Broadband Connection
- Intercom Facility with video door phone

Electrifications

- Concealed copper wiring with circuit breakers
- Adequate electrical points
- Premium quality switches (ISO marked).

Doors

- Decorative main doors and Internal Doors.

Windows

- Anodized Aluminum Sliding Windows.

Kitchen

- Granite kitchen platform with stainless steel sink
- Glazed/Ceramic dado tiles

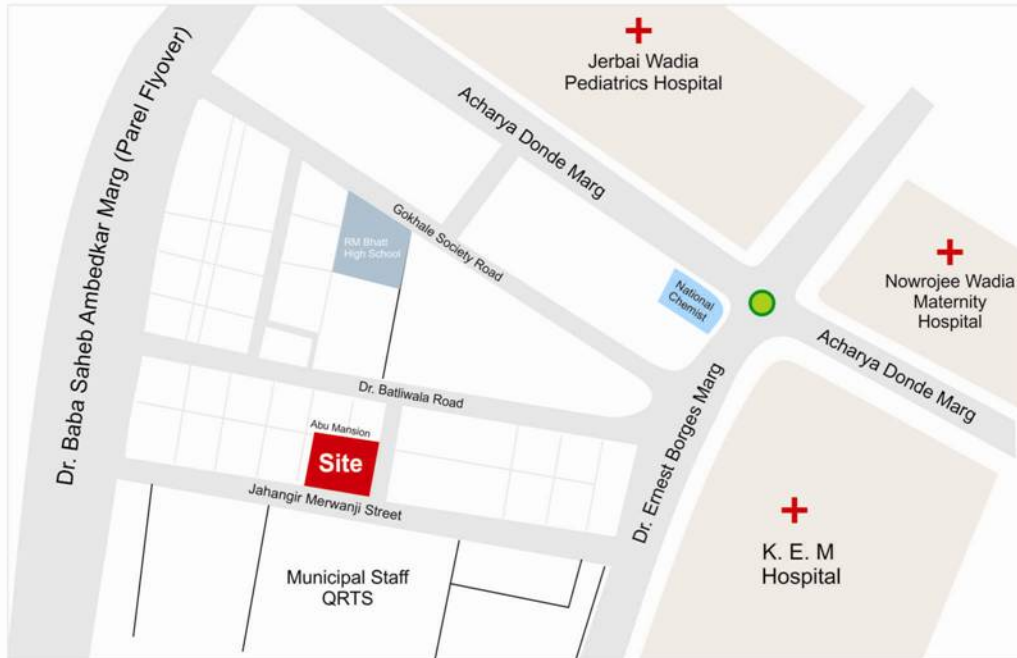
Toilets

- Designer glazed dado tiles on the walls
- Single lever bathroom fixtures in all bathrooms
- Concealed plumbing of good quality make like Jaguar or equivalent.
- Granite door frames with decorative moulding.

Other Amenities

- 24 hours water supply / storage (borewell will be provided subject to site conditions)
- Spacious well decorated lift lobby.
- Fire fighting system

Location Map



Architect
Faiyaz Ahmed Khan

Developers



Project Managed by



Transforming Living, Working and Infraspac.e.

Corporate Office: Neev Vittoria, Nesbit Road, Next to Mazgaon Sales Tax Office, Mumbai- 4000 10.
Tel: +91-22-64555555 Fax: +91-22-61455566 Email: info@neev.co.in Web: www.neev.co.in