



Sand Dune Construction (P) Ltd.

An ISO 9001 Company

Reg. Office : A-8, Shyam Nagar, Jaipur Ph.: 0141-2293395

Admn. Office : Ashiyana, D-29, Shanti Path, Patarkar Colony, Tilak Nagar, Jaipur

Ph.: 2623443, 9314874679, 9829067650, 9887707111

Fax : 91-141-2623443, E-mail: group_sdc@yahoo.com

Website : www.sdcjaipur.com

Architects
SPACE GRID

Architects, Engineers and Interior Designers
C-49,B-6, Vidya Apartment, Paras Marg
Near Janta Store, Bapu Nagar
Tel.: 93145-10603, 93149-18766


Basant Kunj
home that enhance hapiness



Comfort nestled in Basant Kunj



Raise your
standard
of living to a
new level

At Basant Kunj you have the option of selecting between 3 & 4 BHK balcony apartments. Ample thought and care has been taken while designing both these apartment types, so as to give you a complete advantage of space requirement.

Space matched with contemporary layouts to give you the luxury you need to harbor a holistic lifestyle. A place where you and your family long to be together. A place where you can create and cherish happy memories for years to come

At Basant Kunj you will find everything so perfect that it will inspire you to imbibe this perfection not just into your home but also into your lifestyle. Raise your standard of living to a new level. Enjoy your evenings on the terrace while you sip tea and watch peaceful sunsets. The balcony is also the perfect location to perch yourself on a nice rainy afternoon as you read a book or watch the bliss of nature.



A home is a reflection of its residents. A definition of family values and traditions.

At Basant Kunj every apartment is made to suit the needs of your family. This is seen through the comforting ambience, contemporary designs, well-laid out floor plans, ample sunlight and ventilation, unique fixtures and fittings. While keeping the basics in view, a touch of luxury is added by providing balcony with each apartment and most flats face the road. Thus giving you a personal get-away of private and peaceful moments with your loved ones.

Site Address : B-19, Rajendra Marg, Bapu Nagar, Jaipur





The celebration at **Basant Kunj**

Indian traditions have given us many reasons to celebrate. The colours of Holi, the sparks of Diwali, the beginning of a New Year and much more. These celebrations bring with them a whole host of beautiful memories that we cherish for years to come.

At **Basant Kunj** we have ensured that you can celebrate every little victory, every joy and every fun filled moment. With an eye-catching ambience throughout the house and individual space dedicated for various amenities and facilities, you can create beautiful memories with your loved ones every single day of your life here.





Basant Kunj
home that enhance hapiness

Rediscover a new life in Jaipur



home that enhance *happiness*

Basant Kunj
home that enhance happiness

Salient Features

Apartment Features:

- Granite, Wooden Flooring in Drawing and Dining area.
- Premium Class flooring of Vitrified Tiles/Marble.
- POP finish on wall & ceiling with cornices.
- Acrylic Plastic paint on wall & ceiling.
- Polish/Paint on doors & windows.

Wood Work:

- Windows having Glass panels/wire mesh panels with safety grills
- Tough ISI mark 30 mm flush doors.
- Well designed main door of 30 mm thickness.
- Brass fitting of good quality on doors & windows.
- Wooden wardrobe with shutters in each bedroom.

Kitchen:

- Black Granite working counters, SS sink.
- 2' tiles dado above the counter.
- Modular Kitchen.
- Concealed Copper tubing for Gas line to nearest balcony.
- Separate Washing Area.

Toilet:

- Cubicle shower/Panel in master bedroom.
- Designer Spanish tile in toilet.
- Premium C.P. Fitting of Crabtree/Marc Continental Range.
- Ceramic tiles in toilet upto 7' height on walls.



- Anti-skid ceramic tiles on flooring.
- Counter wash basin in master Bedroom toilet.
- Jet in all Toilets.
- C.P. Accessories in Toilets of premium brand.

Security System

- Closed Circuit TV (in Entrance lobby/Parking area).
- EPBX system.
- Well managed Security Service.

Electrical:

- Modern electrical system with concealed Copper Wiring.
- Premium quality Switches & Accessories.
- TV/Telephone/A.C./Cooler point in all the rooms at appropriate places.

- Power backup (Silent D.G. Set) for common service.
- Fan, Exhaust & Tubelite provided.
- Decorative light in Drawing & Dining.

General Features:

- Well designed Entrance foyer & Lobby area.
- Earthquake resistant framed structure design as per Seismic Zone II.
- Appropriate fire fighting arrangements.
- 2 Lifts for fast & easy commuting.
- Decorative wash basin in dining area.
- 24 hour water supply through own tubewell.
- Rain water harvesting system.



Stilt Floor Plan

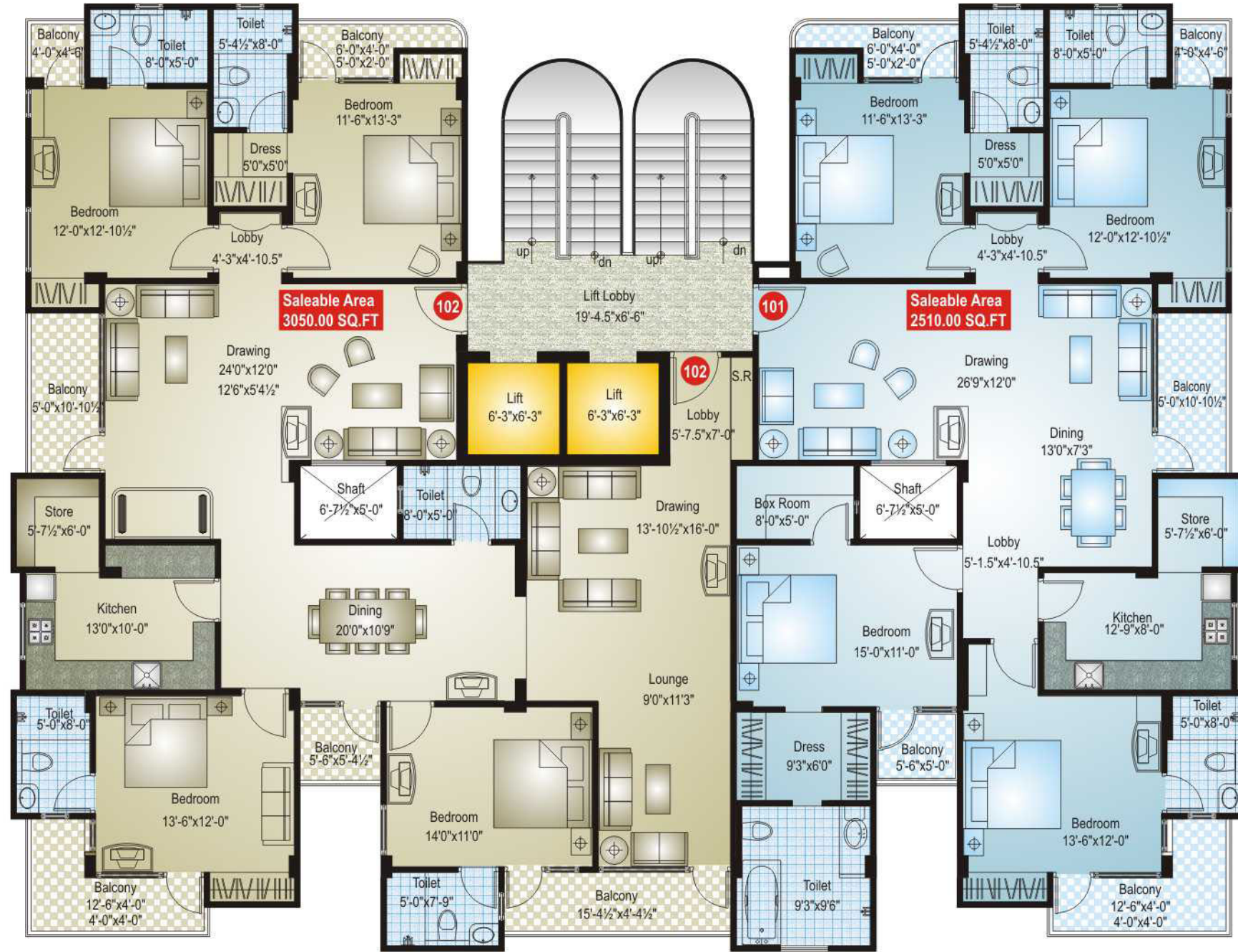
Shop No.	G-1	G-2
Saleable Area	777.00 Sq.Ft.	777.00 Sq.Ft.



Typical Floor Plan 3 BHK

Flat No.	101	102	103
Saleable Area	1965.00 Sq.Ft.	1680.00 Sq.Ft.	1915.00 Sq.Ft.





Typical Floor Plan 4 BHK

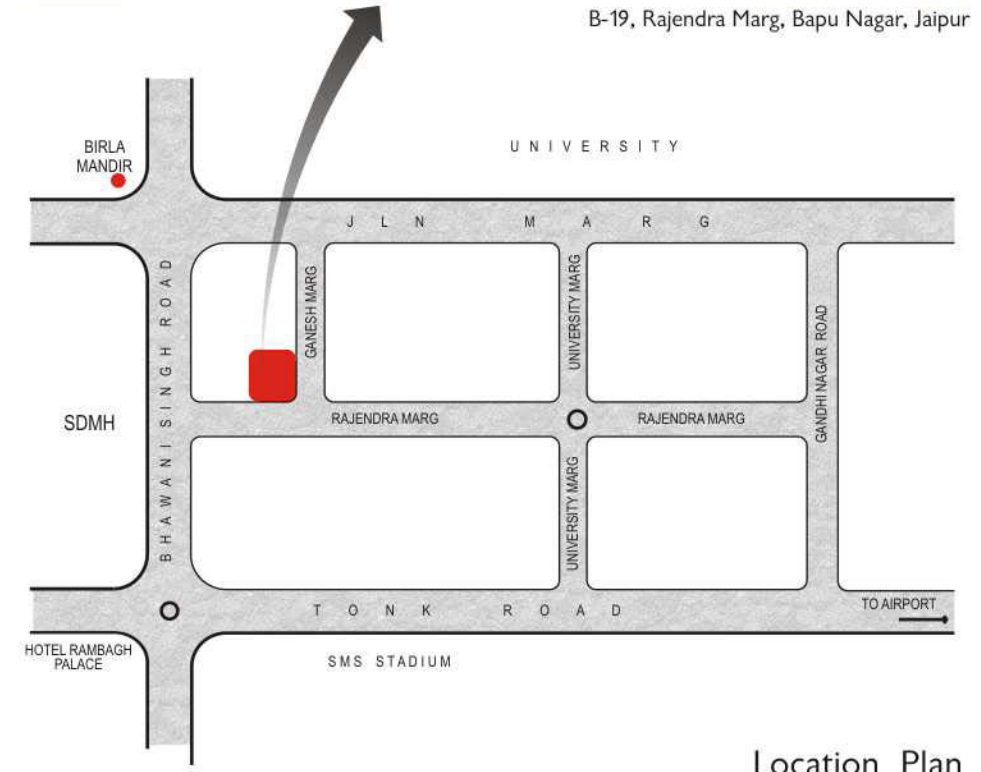
Flat No.	101	102
Saleable Area	2510.00 Sq.Ft.	3050.00 Sq.Ft.



Few of our Project



B-19, Rajendra Marg, Bapu Nagar, Jaipur



Location Plan