

Notting Hill

PHASE 2

.....
CARNIVAL OF LIFE
.....

RERA NO.: P52100018617



**GULMOHAR
BUILDERS**

Creating homes with class



Gulmohar builders & Paradise builders & developers - Real estate developers in Pune, Residential town planners was established in the year 1985 with a vision to create landmarks in the city of Pune. Since then, we have grown not only in stature but have also brought state-of-the-art residency in the city. We have developed more than 2 million sq.ft of space in Pune.

We believe in induction of modern techniques in our operation. This translates into cost effective and state-of-the-art solutions without any compromise on the deliverable and strict adherence to deadlines.

**HAPPINESS &
CELEBRATION
ALL ARE HERE
WATCHING NOW
FOR YOU TO JOIN US
IN THE CARNIVAL
OF LIFE**

WELCOME TO...

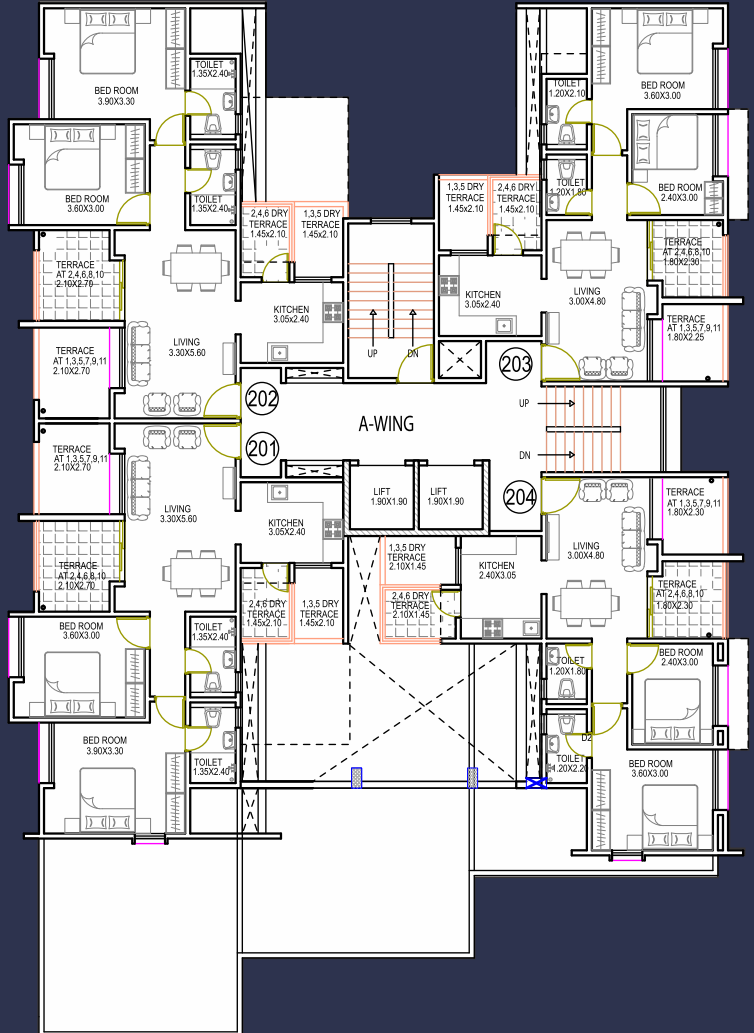
Notting Hill



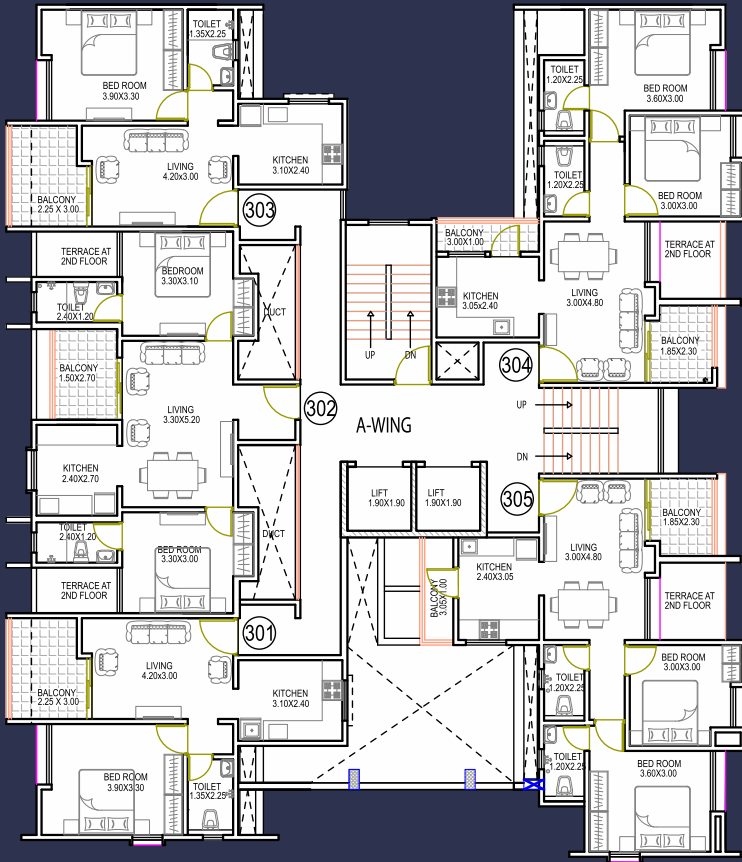
WING A - PLAN AT 1ST SLAB LEVEL



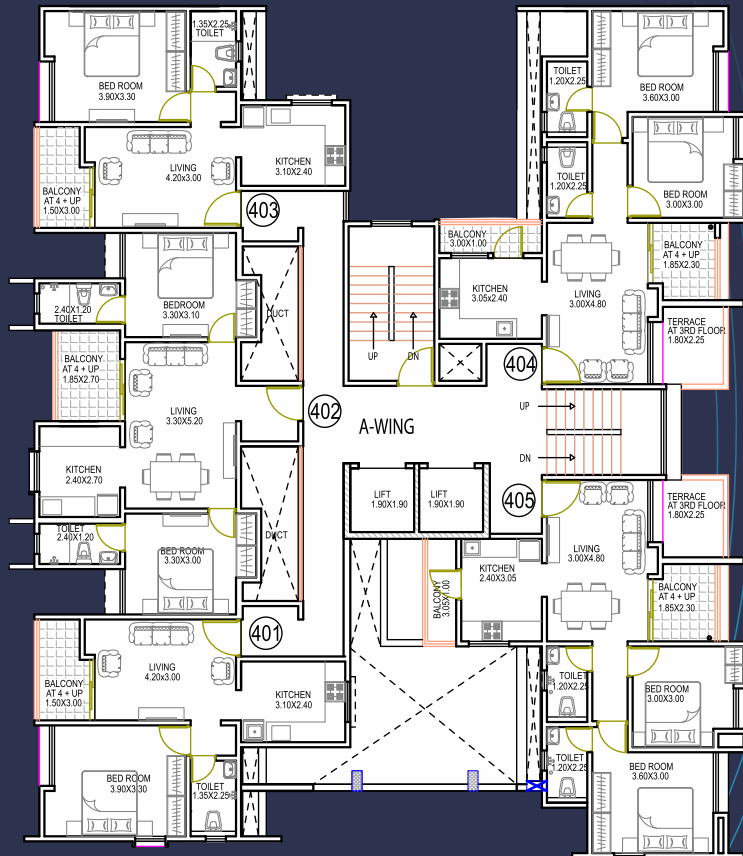
WING A - PLAN AT 2ND SLAB LEVEL



THIRD FLOOR PLAN



TYPICAL FLOOR PLAN (4,5,6,7,9,10,11)



SPECIFICATIONS...

A. FLOORING

- a) Vitrified flooring in entire apartment
- b) Designer bathroom tiles and kitchen dado

B. WINDOWS & DOORS

- a) Laminated / Veneered doors with premium handle & hardware
- b) Powder coated Aluminium windows

C. ELECTRICAL

- a) Provision of split A.C points in Master bedroom
- b) Concealed copper wiring along with modular switches
- c) T.V & telephone points in living room & Master bedroom
- d) Provision of Inverter backup for the apartment

D. PLUMBING

- a) Concealed plumbing with branded sanitary ware & fittings

AMENITIES...

- a) Well laid out drive ways, tree plantation & illumination
- b) Well landscape garden & children play area
- c) Grand entrance lobbies
- d) Swimming pool
- e) Gymnasium
- f) Multipurpose hall
- g) Generator Back up for common lights & elevators
- h) Automated Elevators
- l) Intercom security system
- j) Solar water heating system



Actual Site Photographs

LOCATION MAP

NOT TO SCALE



 Google Coordinate 18.4597909,73.8970011

SIGNIFICANT LADMARS

- D Mart - 500 Mtrs.
- Hill Green High School - 1.10 Km
- Sanskriti School - 1.30 Km
- Bishop's School Sports Ground Undri - 1.80 Km
- Sinhgad Kondwa - 3.00 Km
- Trinity International School - 4.5 Km
- Trinity Academy of Engineering - 4.5 Km
- Magar Patta City - 9.00 Km

A PROJECT BY:



Site - S. No. 23, Near Kondhwa D'MART, Punya Dham Ashram Road,
Kondhwa Budruk, Pune - 411048

Contact No. (M) 9764449938, 8007776661/3

Corporate Office - Gulmohar Builders, 207, Cannought Place, Bund Garden Road, Pune - 411001

Email - sales@gulmoharbuilders.com | www.gulmoharbuilders.com

Contact No. - 020 - 26160101 | 26160102



The present project contents displayed in our brochure are only for general information purpose and representational view. Nothing on our site is indicative of any type of sales pitch/offer/intend and nor is to be construed in that term by the viewer of our brochure. The imagery used in the brochure are indicative of style only. Photographs of interiors, surrounding views and location may have been digitally enhanced or altered and do not represent actual views or surrounding views. These photographs are indicative only. The information contained herein is believed to be correct but is not guaranteed. Prospective purchasers should make and must rely on their own enquiries. The colours of the buildings are indicative only. This brochure is a guide only and do not constitute an offer or contract. The company will not be liable for any legal course of action by any viewer for relying on brochure information.