

VAISHNO SQUARE

Pearl . Padmasree.

sea side living



See it | Love it | Own it

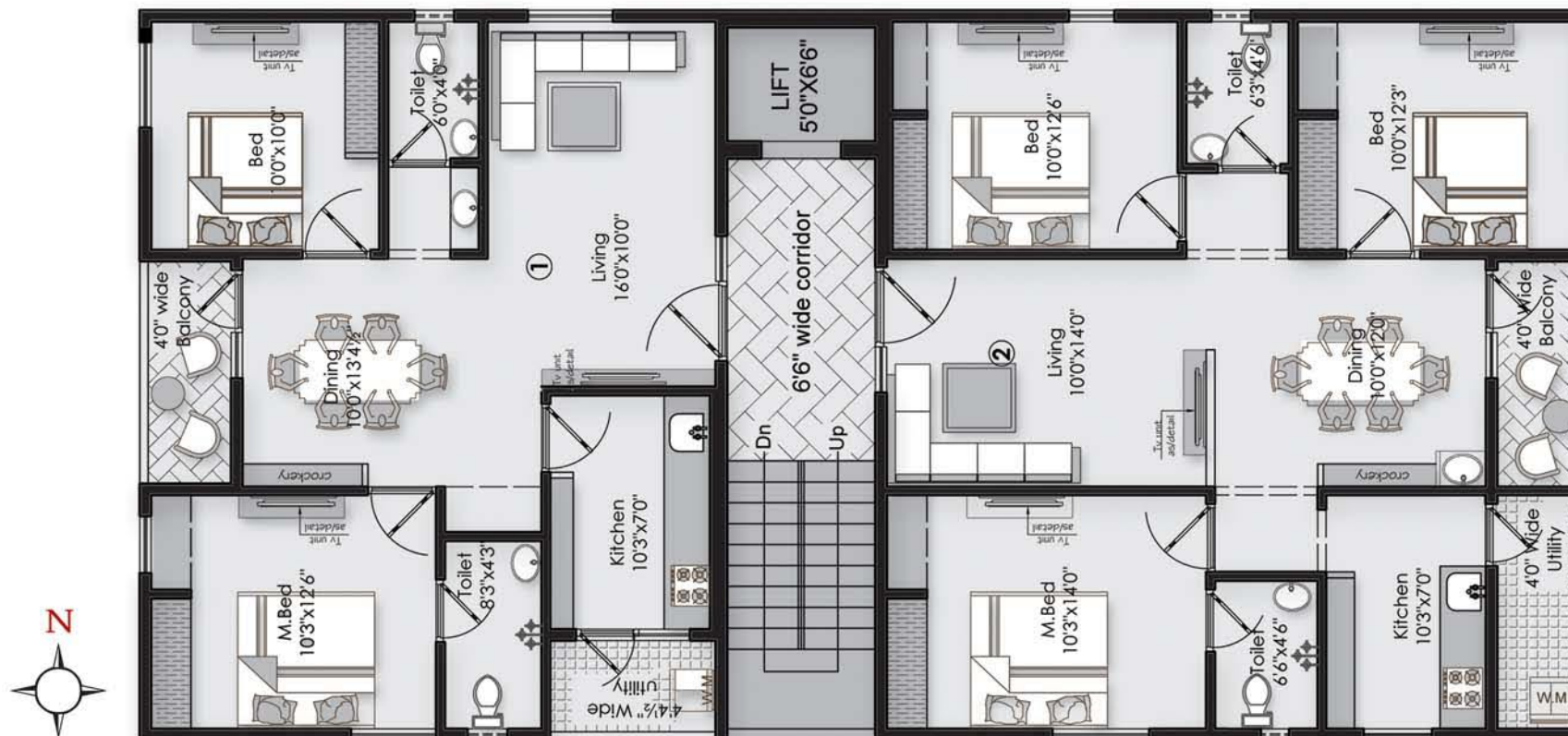
Specifications

- Foundation / Structure :** R.C.C. Framed Structure with M20 mix, No common walls for sufficient cross ventilation.
- Super Structure :** 6" External wall and 4½" internal wall with quality brick in cement mortar.
- Vaasthu :** 100% Vaasthu.
- FINISHES**
- Internal :** Smooth plastered surface treated with putty and painted with premium quality emulsion.
- Painting :** Sand finished plaster surface with putty with water proof premium quality Emulsion. All doors of the one coat primer two coats of putty and 2 coats of Enamel paint.
- FLOORING**
- All rooms :** 2x2' vitrified tiles of standard make.
- Toilets / Balconies :** Anti skid ceramic tiles for toilets and balconies
- DOORS & WINDOWS**
- Main Door :** Teak wood door frame & shutter. Fitted with good quality hardware and locking system of reputed make.
- Other Doors :** Seasoned wood frame with good quality moulded flush shutter with quality hardware and lock.
- Windows :** UPVC Windows
- Kitchen :** Cooking platform in Granite and Stainless Steel Sink with both Drinking & Bore water connection & provision for exhaust chimney.

- Water Supply :** Drinking water & 24 hrs. Bore water supply for all flats with over head tank and under ground sump.
- TILE DADOING**
- Kitchen :** Glazed ceramic tile dado upto 2' height above kitchen platform
- Toilets :** Wash basin of standard brand
Indian & Western type toilets with Flush Tank of standard brand.
Designer wall tile dado upto 6' height of quality make
CPVC Piping standard brand
Provision for Geyser & Exhaust fan
All CP fittings of standard brand
- Electrical :** 3 Phase power supply for each individual flat
PVC piping of standard brand
Concealed copper wiring of Finolex / Polycab / Havells or equivalent brand
A.C. Points for all Bedrooms
Power points for Chimney, Microwave, Refrigerator, Grinder in kitchen and Geyser point in Toilets
Modular switches of Legrand / Salzer brand
- Communication :** TV Provision in Living & Master Bedroom
Telephone points in Living & Master Bedroom
- Lift :** Each block consisting of 6 passenger lift, leading to all floors of Johnson or equivalent brand
- Power Backup :** Generator power for Lift, Bore well and Common Area lighting
- Parking :** Adequate Car parking is available in stilt floor
- Eco Friendly :** Rainwater harvesting pit & Gardening



Block A & Block B Typical Floor Plan



1030 sqft.

1280 sqft.

VAISHNO SQUARE
Pearl . Padmasree.

Your *Dreams*
come true with...



ROAD

Nature Blessing | comfort | luxury living....

LOCATION PLAN



Builders & Promoters



Vaishno Real Estates and Property Developers Pvt. Ltd.
House of Masetty, D.No. 50-21-2, 2nd Floor, TPT Colony
Seethammadhara, Visakhapatnam-530 013
Phone : 0891-2502714
E-mail : vaishnoproperities.ap@gmail.com
Website : www.vaishnoproperities.com



Architects

STYLE+STRUCTURE

Architects, Engineers, Interior Designers

Plot #185, LIG, Pithapuram Colony
Visakhapatnam-530 003
Fax/Phone: (0891) 2573841
E-mail: styleplusstructure@gmail.com



Structural Engineers

RAYI DESIGN + DEVELOPMENT CONSULTANTS

#5, Second Floor, Annapurna complex,
Pedawaltair, Visakhapatnam-17
Ph: 0891-2532409

Architectural Renderings & Brochure Design by



9550298244, 9959384104