

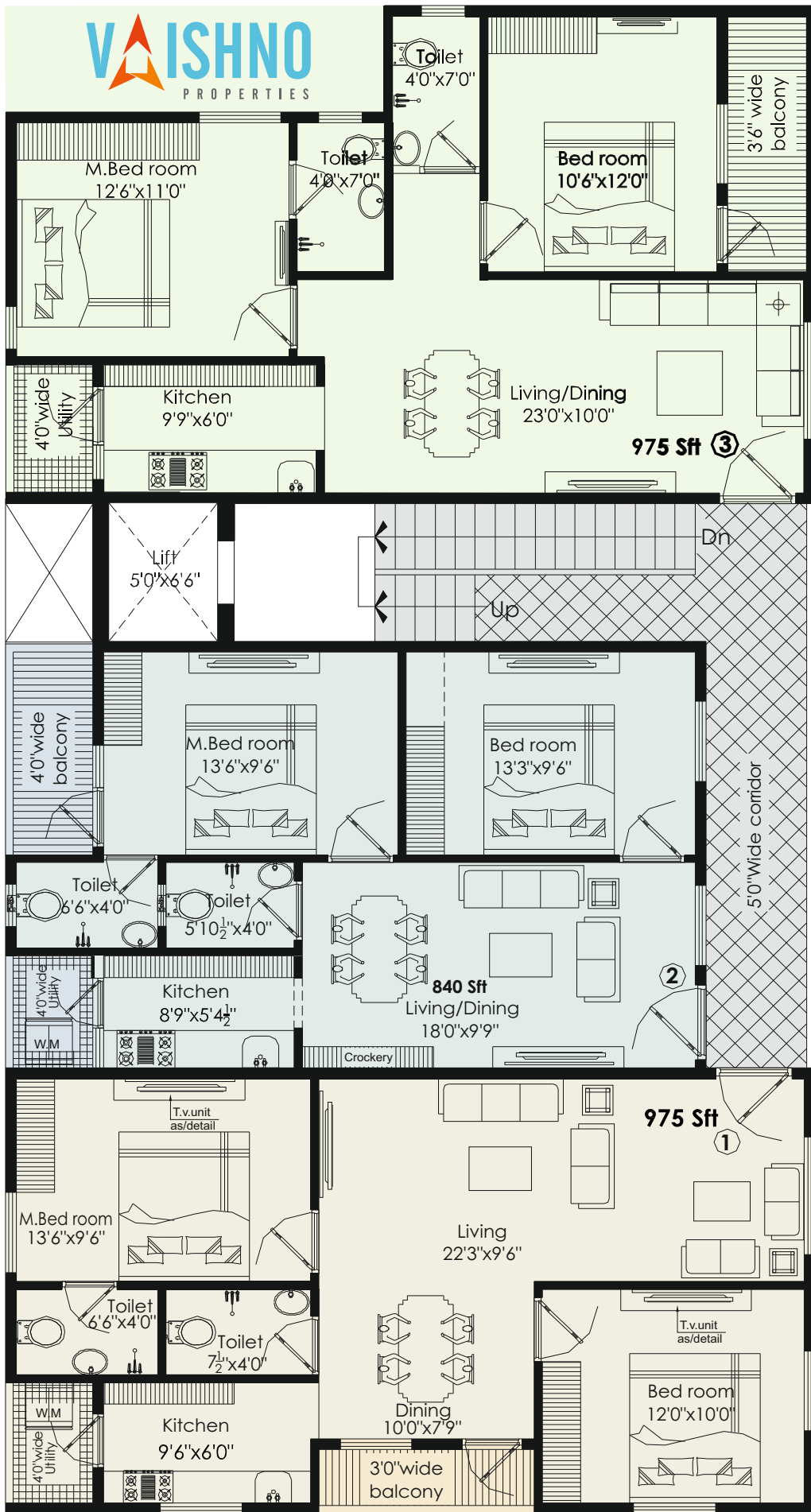




T
Y
P
I
C
A
L

F
L
O
O
R

P
L
A
N



S P E C I F I C A T I O N S

- Foundation / Structure** : R.C.C. Framed Structure.
Super Structure : 6" External wall and 4½" internal wall with quality brick in cement mortar.
Vaasthu : 100% Vaasthu.

FINISHES

- Internal** : Smooth plastered surface treated with putty and painted with premium quality emulsion.
Painting : Sand finished plaster surface with putty with water proof premium quality Emulsion. All doors of the one coat primer two coats of putty and two coats of Enamel paint.

FLOORING

- All rooms** : 2'x2' vitrified tiles.
Toilets / Balconies : Anti skid ceramic tiles for toilets and balconies.

DOORS & WINDOWS

- Main Door** : Teak wood door frame & shutter. Fitted with good quality hardware and locking system of reputed make.
Other Doors : Seasoned wood frame with good quality moulded flush shutter with quality hardware and lock.
Windows : Seasoned wood frame with shutters, white pinhead glass and MS Grills.
Kitchen : Cooking platform in Granite and Stainless Steel Sink with both Drinking & Bore water connection & provision.
Water Supply : Drinking water & 24 hrs. Bore water supply for all flats with over head tank and under ground sump.

TILE DADOING

- Kitchen** : Glazed ceramic tile dado upto 2' height above kitchen platform.
Toilets : Wash basin of Hindware / Johnson or equalent brand.
Indian & Western type toilets with Flush Tank of Hindware / Johnson or equalent brand.
Designer wall tile dado upto 6' height of quality make.
CPVC Piping of ASTRAL or equalent brand.
Provision for Geysers & Exhaust fan.
All CP fittings of Johnson or equalent brand.
Electrical : 3 Phase power supply for each individual Flat.
PVC piping of standard brand.
Concealed copper wiring of Finolex / Polycab / Havells or equalent brand.
A.C. Points for all Bedrooms.
Power points for Chimney, Microwave, Refrigerator, Grinder in kitchen and Geysers point in Toilets.
Modular switches of Salzer or equalent brand.
Communication : TV Provision in Living & Master Bedroom.
Telephone points in Living & Master Bedroom.
Lift : 6 passenger lift, leading to all floors of Johnson or equalent brand.
Power Backup : Eicher or equalent brand Generator power for Lift, Bore well and Common Area lighting.
Parking : Car parking provision in stilt floor.
Eco Friendly : Rainwater harvesting pit.

Anything other than specified in the brochure will be done at extra cost. APSEB, GVMC, Water, UGD, Sales Tax, Service Tax & Registration at extra charges. The details / accessories shown in this brochure are indicative and are subject to change without notice and to not constitute a legal offering.

Our Previous Ventures



Brindavan Vihar



Vaishno Vihar



Vaishno Waves



Ramya Rays



Vaishno Vasudha



Vaishnodite



Builders & Promoters



Vaishno Real Estates and Property Developers Pvt. Ltd.

House of Masetty, D.No. 50-21-2, 2nd Floor, TPT Colony

Seethammadhara, Visakhapatnam-530 013

Phone : 0891-2502714

E-mail : vaishnoproPERTIES.ap@gmail.com Website : www.vaishnoproPERTIES.com

Architects

STYLE+STRUCTURE

Architects, Engineers, Interior Designers

Plot #185, LIG, Pithapuram Colony, Visakhapatnam-530 003

Fax/Phone: (0891) 2573841 E-mail: styleplusstructure@gmail.com



Structural Engineers

RAYI DESIGN + DEVELOPMENT CONSULTANTS

#5, Second Floor, Annapurna complex,

Pedawaltair, Visakhapatnam-17

Ph: 0891-2532409

