



# Ria Empire

RESIDENTIAL APARTMENTS

आपका अपना खुशियों का संसार... आज... कल... हमेशा...



Serving Quality Since 1996...

**Ria  
Empire**  
RESIDENTIAL APARTMENTS

आपका अपना खुशियों का संसार... आज... कल... हमेशा...



# Features



## Apartment Features

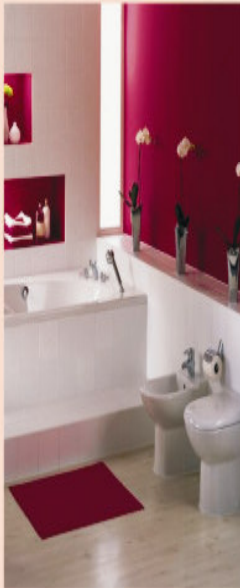
- Vitrified Tiles.
- POP finished wall & ceiling premium quality distemper.
- Wooden doors & windows.
- Proper Ventilation & Sunlight all around.

## Electrical

- Children friendly electrical accessories.
- Concealed Copper Wiring in PVC Conduit.
- Premium quality Switches & Accessories.
- TV & Telephone point in drawing and master bedroom.
- A.C./Cooler points in all the rooms at appropriate places.
- Power back-up (Silent D.G. set) for common facilities.
- One calling bell along with bell push.

## Toilet

- Designer tile in toilet.
- Premium C.P.Fitting.
- Ceramic tiles in toilet up to 7' height on walls.
- Anti-skid ceramic tiles on flooring.
- Jet in all Toilets.



## Kitchen

- Granite working counter, SS sink.
- 2 Tiles dado above the counter.
- Anti Skid Tiles.
- Semi modular kitchen at extra cost.



## Security System

- 90 Days Video Recording for common area.
- Well managed Security services.
- Watchman Cabin at main Entrance.



## General Features

- Well-designed Entrance foyer & lobby area.
- Earthquake resistant framed structure design.
- Appropriate fire fighting arrangements.
- 24 hours water supply through own tubewell.
- Rain water harvesting system.
- 2 Lifts for Tower-A & 1 Lift for Tower-B
- Good Quality Finish outer Paint.
- Ample Parking on Stilt Floor.
- Landscape & Water Body Elements.
- Servant dormitory.



Yoga Corner



Gym



Steam & Sauna Bath



Table Tennis



Carrom



Card Room

# लोकेशन प्लान

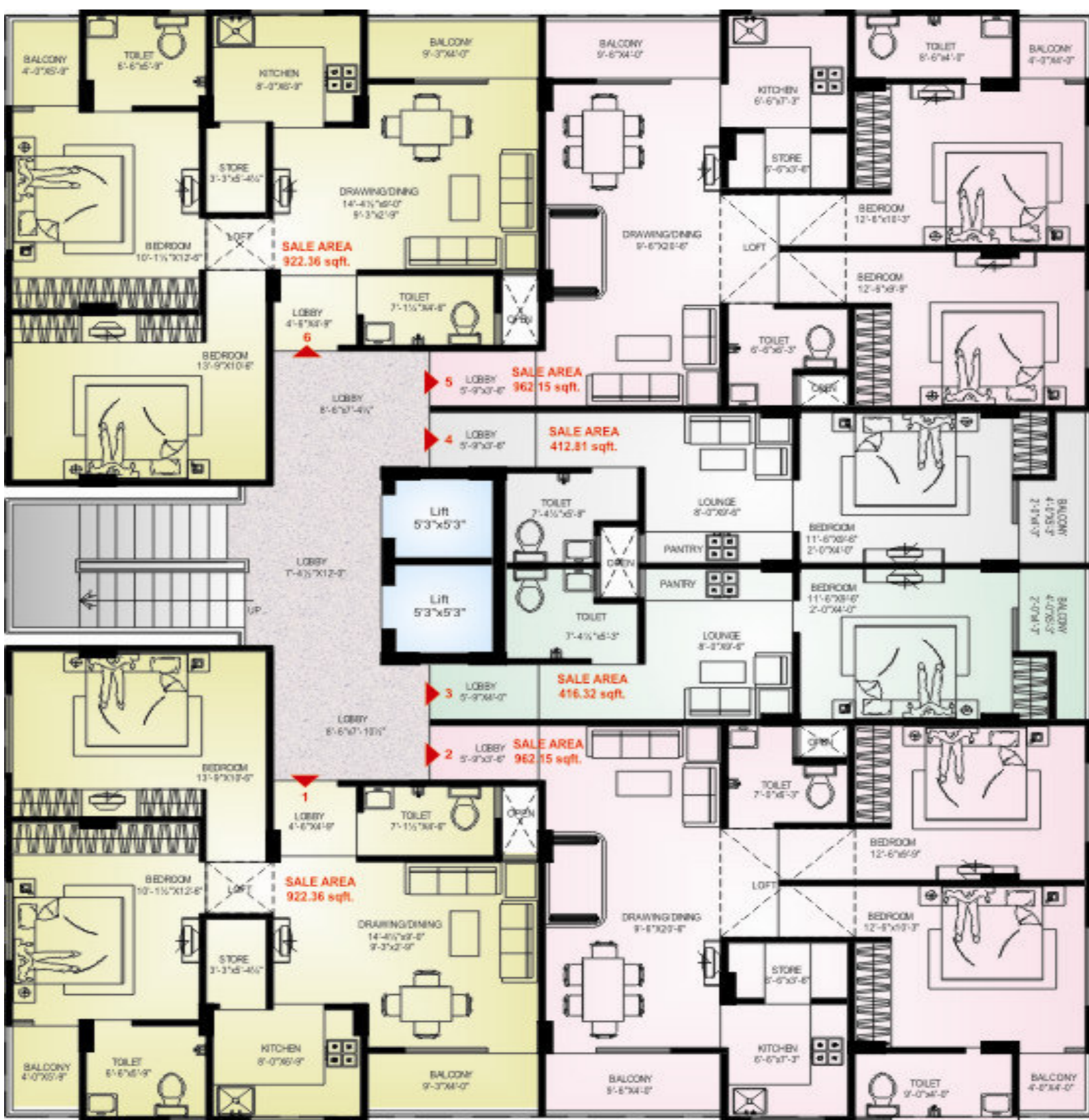


**Ria  
Empire**  
RESIDENTIAL APARTMENTS

Road 30' Wide



STILT FLOOR PLAN TOWER - A & B



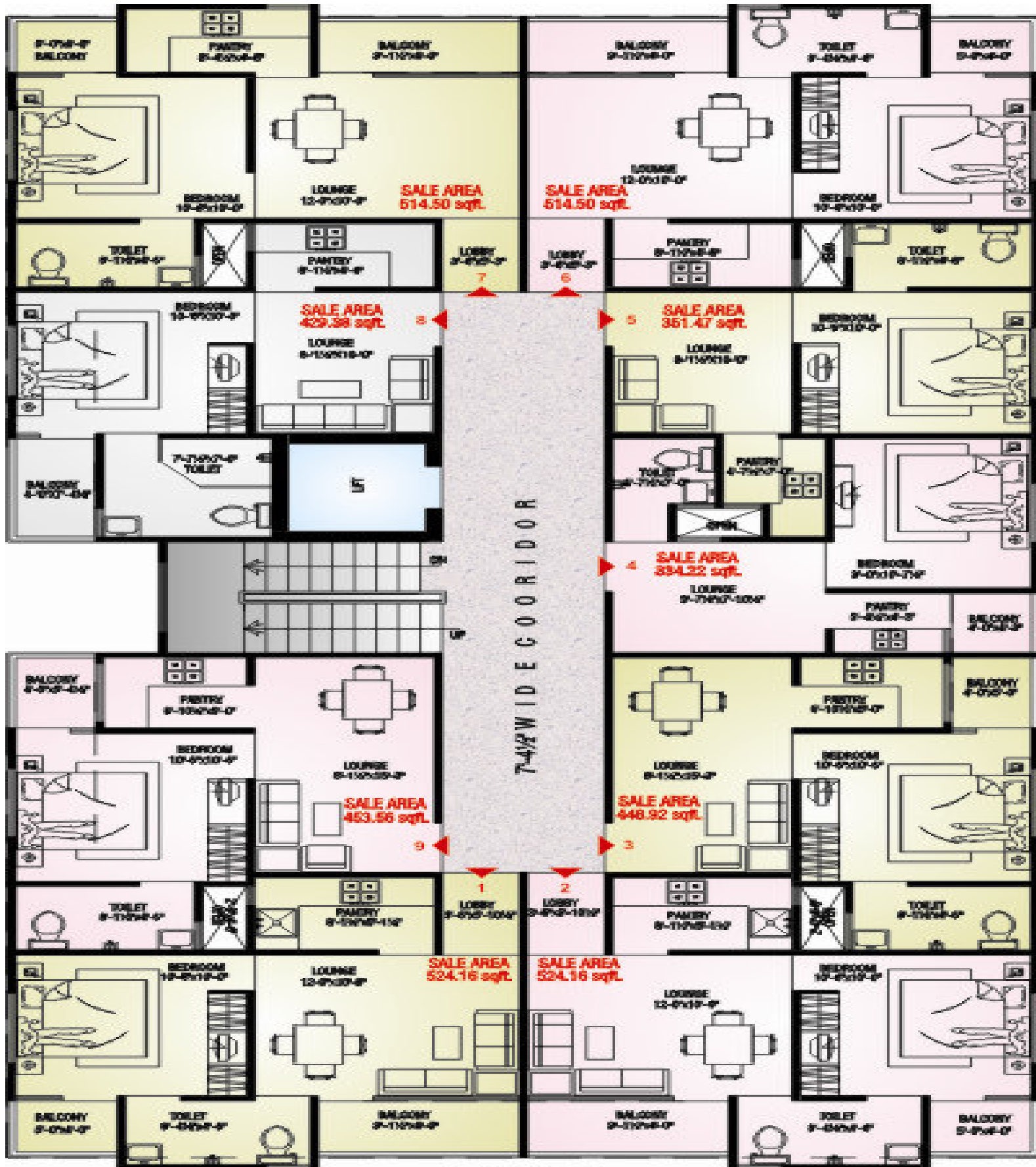
1ST TO 6TH FLOOR PLAN (TOWER-A)



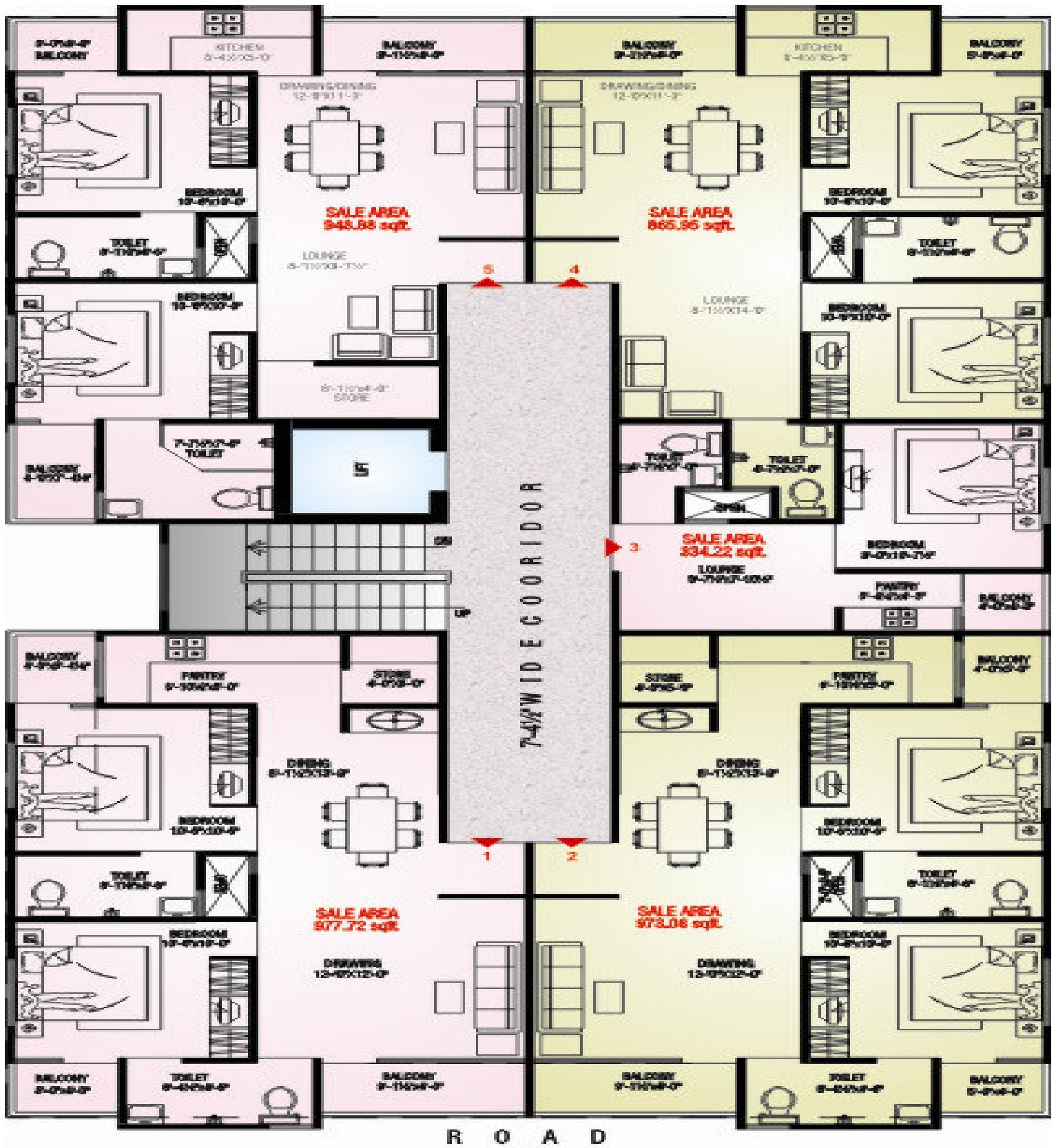


PENTHOUSE FLOOR PLAN (TOWER-A)



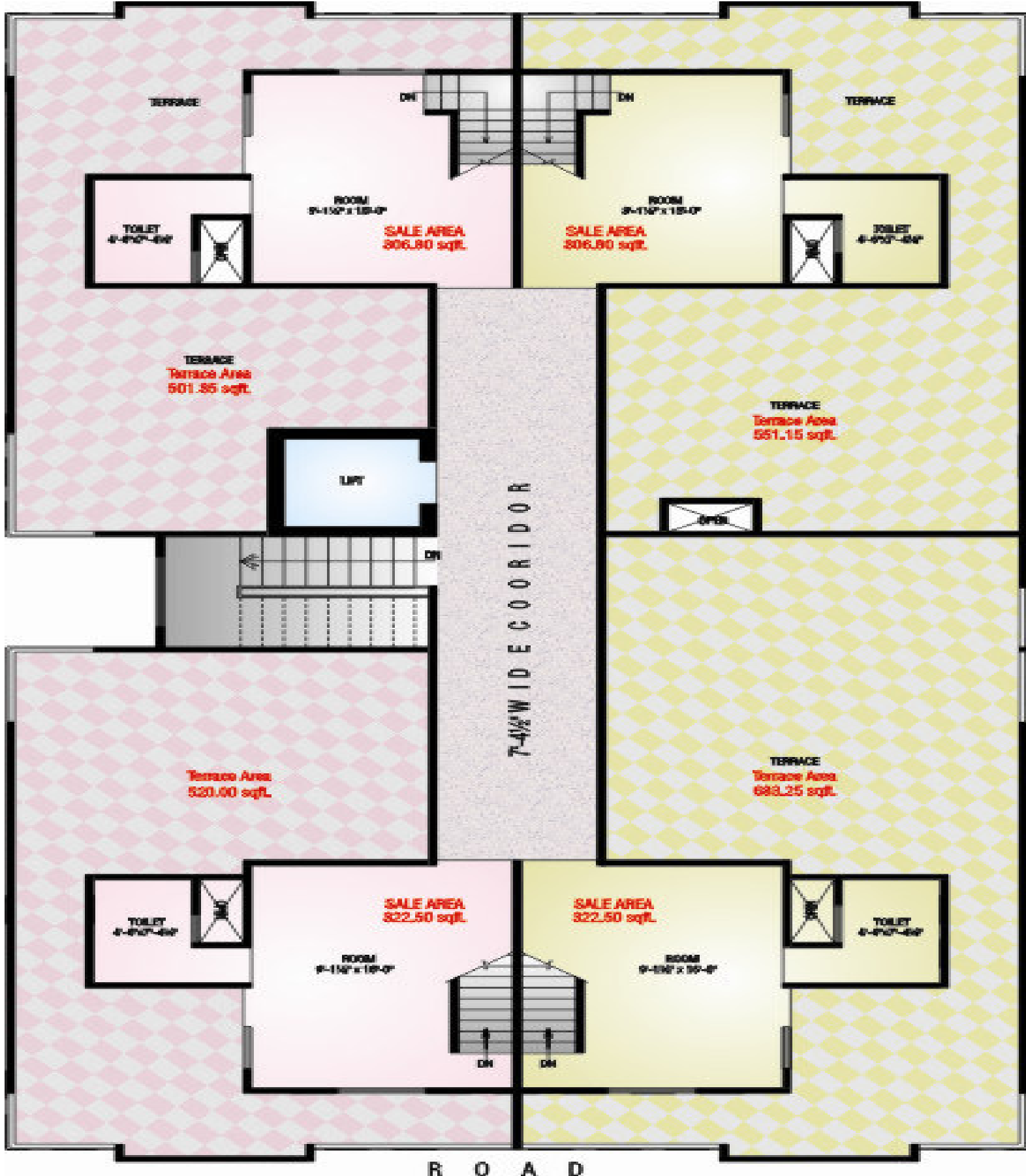


1ST,3RD FLOOR PLAN (TOWER-B)



2ND FLOOR PLAN (TOWER-B)





PENTHOUSE FLOOR PLAN (TOWER-B)

# BUILDERS



## अमित कॉलोनाइजर्स लिमिटेड

जयपुर की एक अग्रणीय व विश्वसनीय कम्पनी है जो कि रीयल एस्टेट के व्यापार में पिछले 14 वर्षों से अधिक समय से जुड़ी है। इन 14 वर्षों में जयपुर जिले को 15 टॉउनशिप प्रोजेक्ट देकर अमित कॉलोनाइजर्स ने राजस्थान के हजारों परिवारों का न सिर्फ विश्वास जीता है बल्कि उनके निवेश को समृद्धीदायक बनाकर उन्हें सुरक्षित निवेश का एहसास करवाया है।

## अमित कोलोनाइजर के अन्य प्रोजेक्ट



NH-11 Distt. Dausa



Shri Rahi Nagar, Paldi Meena, Agra Road, Jaipur



Aashiyana Lakhera, Mali Ki Kothi, Agra Road, Jaipur

Serving Quality Since 1996...



Builder & Developers

## AMIT COLONIZERS LTD.

Above Shop No. 25, Anaj Mandi, Ghatgate Bazar, Jaipur (Raj.) INDIA  
Tel.: +91-141-2606035 • Mob.: 93525-44447 • E-mail : info@amitcolonizers.com  
visit us at : www.amitcolonizers.com



Structure Design  
**SUNIL GOYAL**  
Mob.: 94142-97788

ARCHITECTS  
**SPACE GRID**  
ARCHITECTS, ENGINEERS AND INTERIOR DESIGNERS  
C-49, B-6 VIDYA APPARTMENT, PARAS MARG,  
NEAR JANTA STORE, BAPU NAGAR, JAIPUR - 302015  
Mobile :-9314918766 , 9314510603

Landscape  
**ROYAL LANDSCAPERS (P) LTD.**  
309, Neelkanth Tower, 22 Godam Circle, Jaipur  
Tel.: 0141-4040907

Builders & Developers reserve the right to change any design & specification of the building without any prior notice or information. This brochure is for illustration purpose only & cannot in any way to be treated as a legal document.