



## COMPANY HISTORY

Introducing ourselves as one of the pioneers in Construction Industry, Shreedham Group has been a Real Estate Developer & Builder since 28 Years...And still counting!

Established in 1987, Shreedham Group being a Mumbai based company, having its registered office at Malad, has been renowned for offering Customized Apartments and Innovative Infrastructure. We cater to the requirements of Corporate as well as Individual Clients with Commercial & Residential complexes.

Our credibility has been authenticated & recognized by ISO 9001:2000 Certification, acknowledging our ever-evolving Quality Management System and meeting the latest Customer and Regulatory Requirements.

Having a dedicated team of Highly Qualified Engineers and Industry Professionals, our company has been committed to equal or exceed standards that are demanded. We believe in profitable, sustainable and long-term relationships with all the stakeholders (Clients, Suppliers, Employees, Contractors).

Being a staunch believer and implementer of Customer-centric Approach, we offer reasonably priced structures at unexcelled quality.

**Our agenda of offering unparalleled infrastructure is backed by the hidden agenda of bringing to you - The Future.**

**SHREEDHAM GROUP** *is an organization where quality meets excellence, technology meets aesthetics and passion meets perfection.*

Prosperity knocked.... And we opened the door.

The Company is committed to providing personalized and innovation buildings, both residential , to corporate as well as individual in the best of locations.

“SHREEDHAM GROUP” is in real estate development and excellent in construction. The company has been given ISO 9001:2008 rating for design, construction and maintenance of residential & commercial building.

A team of high qualified engineers and industry professional, a strong customer need orientation and the assurance of quality at affordable prices, make SHREEDHAM GROUP the one of the most dependable and trusted real estate developers.

## **SHREEDHAM SPLENDOUR**

We are pleased to present a premium and one of its kind residential offering along with the details on our company, offer and plans for Shreedham Splendour, our premium residential project at Oshiwara, Andheri (West) Mumbai for your kind perusal.

As part of its vision to create destinations at strategic locations, Shreedham Group presents its ambitious project “Shreedham Splendour” which would consist of Three towers of 18th storey. The exact location of Shreedham Splendour is near Lokhandwala Complex, on main Link Road, Next to Spice Bldg, Oshiwara. The location have good connectivity from the Link Road and Lokhandwala Complex. Also it will have good connectivity to the Highway, with two new Fly Over that is connecting the West and East from Oshiwara to Hub Mall & SV Road to highway near Jogeshwari.





**SHREEDHAM SPLENDOUR**  
Main Link Road, near Lokhandwala Complex

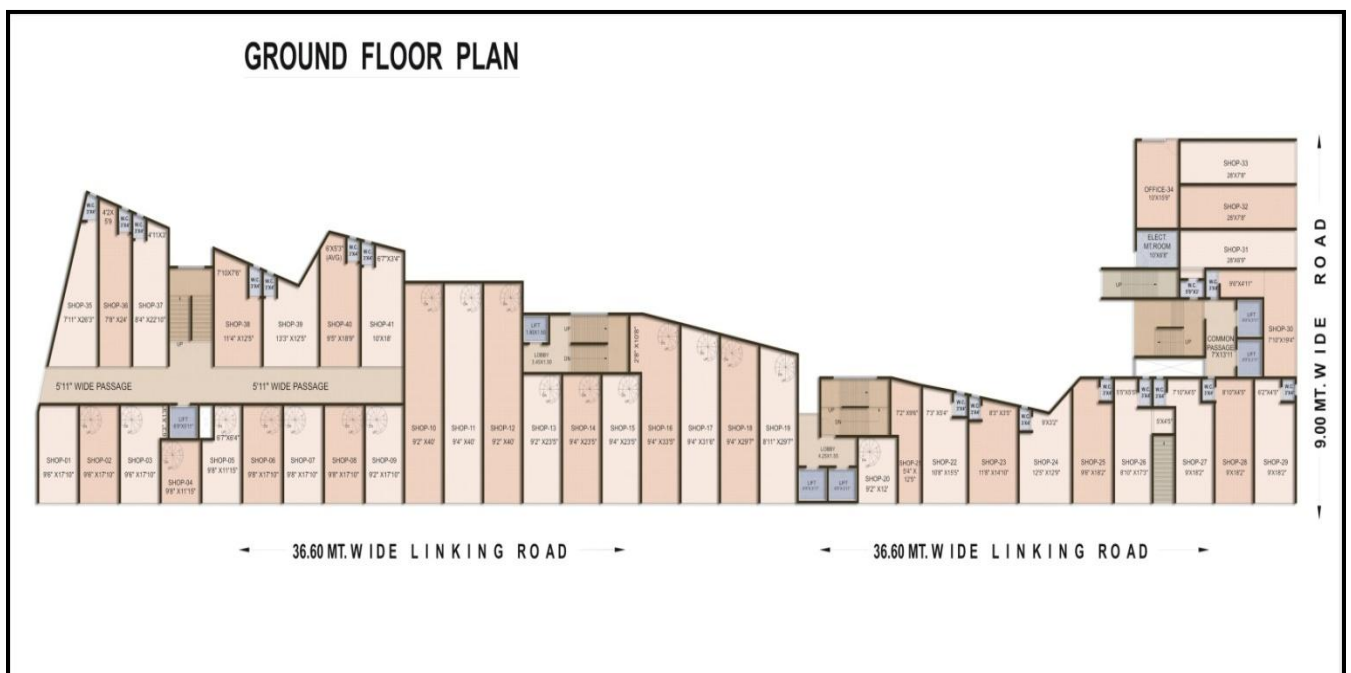
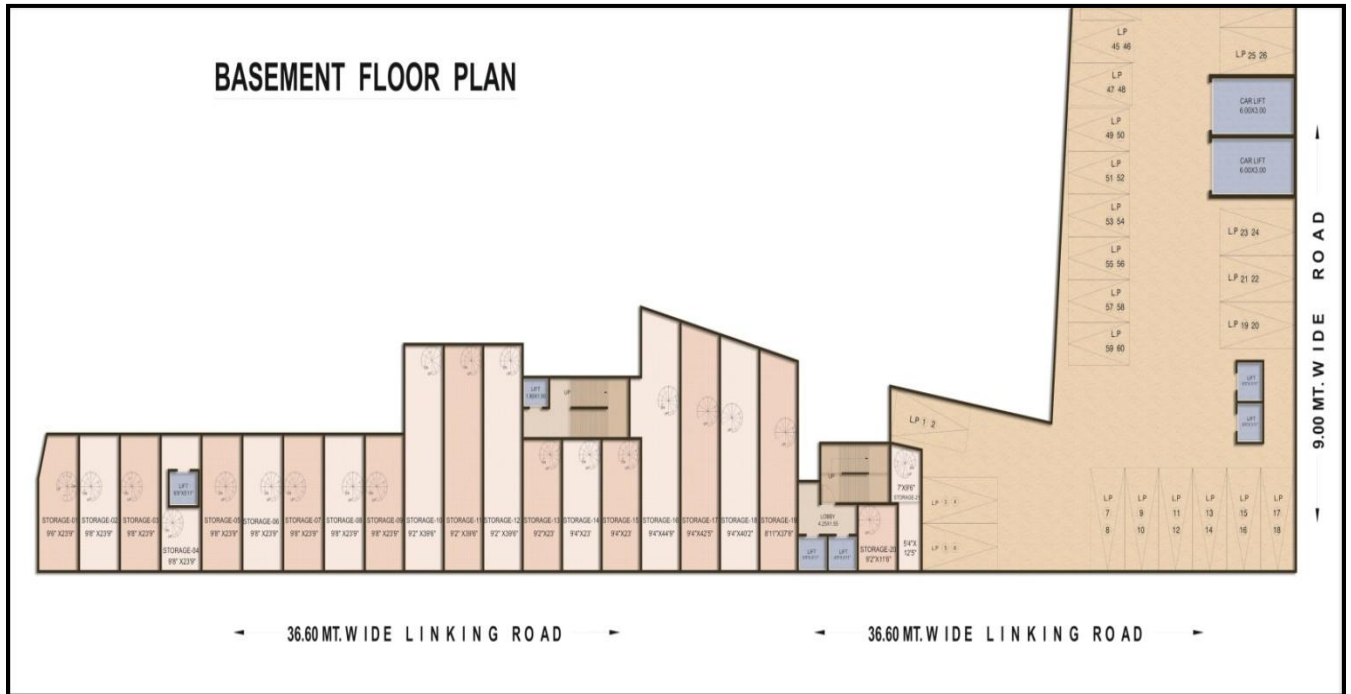
## **COMMERCIAL & RESIDENTIAL AMENITIES**

<b>COMMERCIAL AMENITIES</b>
3.9 Mt” height in shops & offices
* Efficiently planned with option of combining units
* Round the clock sound security
* Exclusive 350sq.ft. Wide frontage on main link road
* EPABX network connectivity
* Hi-speed broadband facility & WIFI zones
* Customized workspace interiors
* Landscaped Garden
* Ample parking space available
* Comprehensive and frequent bus services
* Eye catching glass façade elevation
* Big size floor plate area
* Superior fire fighting system
* Toilet with ceramic tiles on flooring & walls
* Designed washrooms in each shops & offices
* Anodized aluminum windows

<b>RESIDENTIAL AMENITIES</b>
Exclusive 350 sqft. Wide frontage on Main Link Road
Eye catching elevation
Grand Air conditioned entrance lobby
2 High speed elevators
Color video door phone/Intercom in each unit
Meter x Meter marbonite flooring
Luxurious designer tiles in bathroom & WC
Polished granite kitchen platform
Anodized Alluminium windows
Decorative main door
Telephonic, Internet & cable TV connection
Intercom connection & Fire alarm
Fire Fighting System
Ample parking space
Round the clock security
Concealed plumbing & wiring with best quality fittings

# COMMERCIAL & RESIDENTIAL PLANS

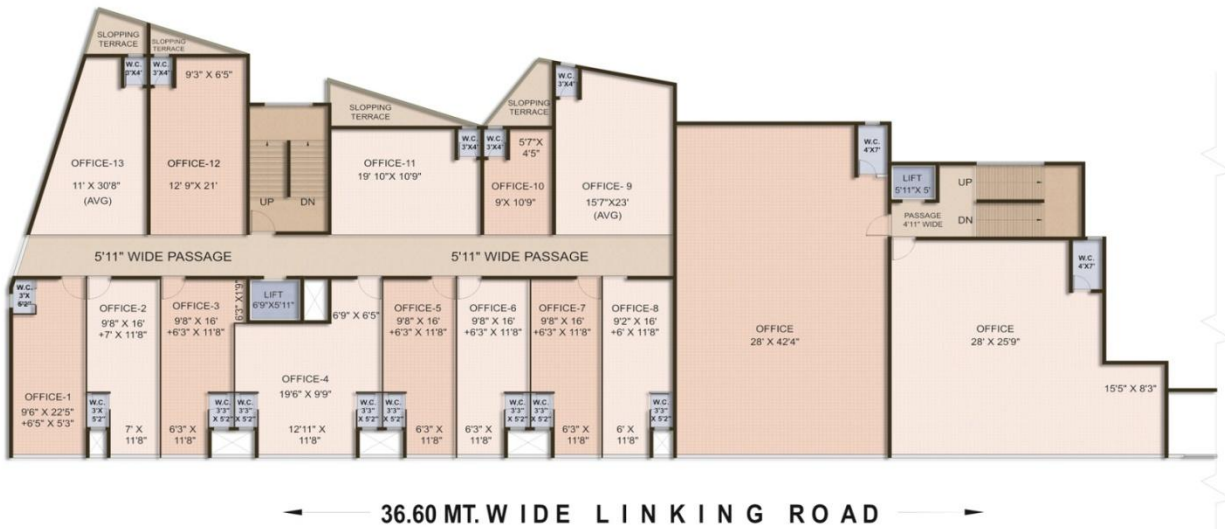
## COMMERCIAL PLANS – BASEMENT, GROUND, 1<sup>ST</sup> & 2<sup>ND</sup> FLOOR



# FIRST FLOOR PLAN

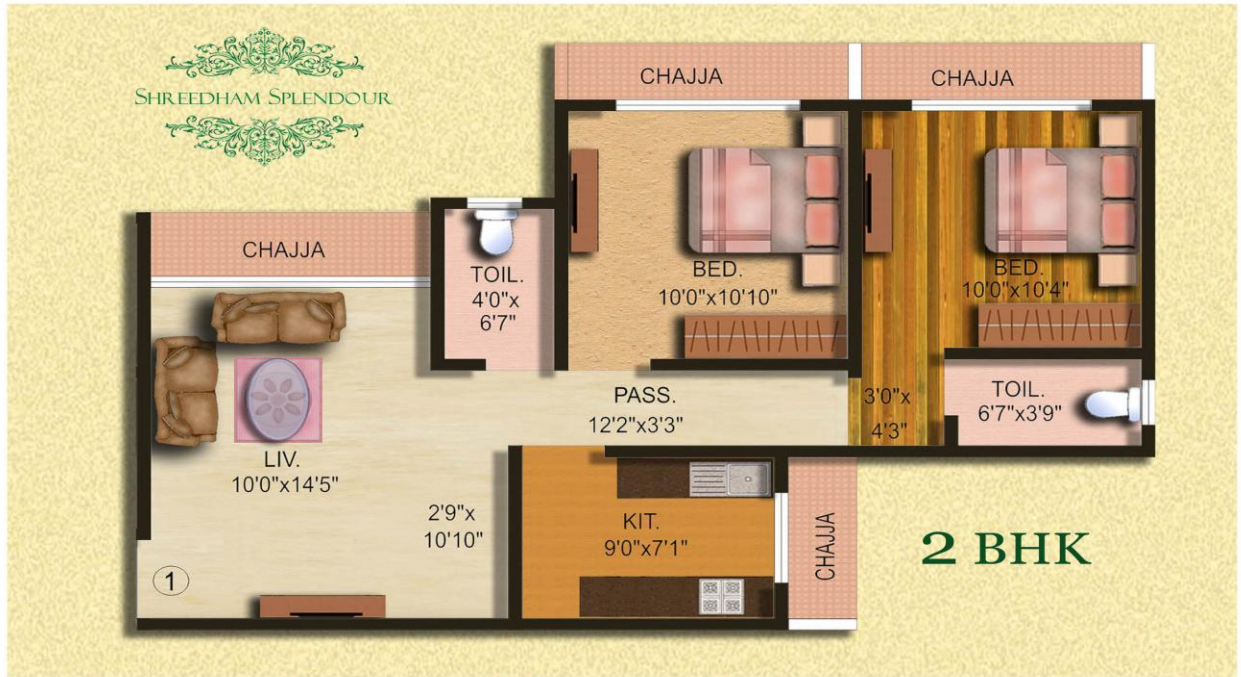


# SECOND FLOOR PLAN

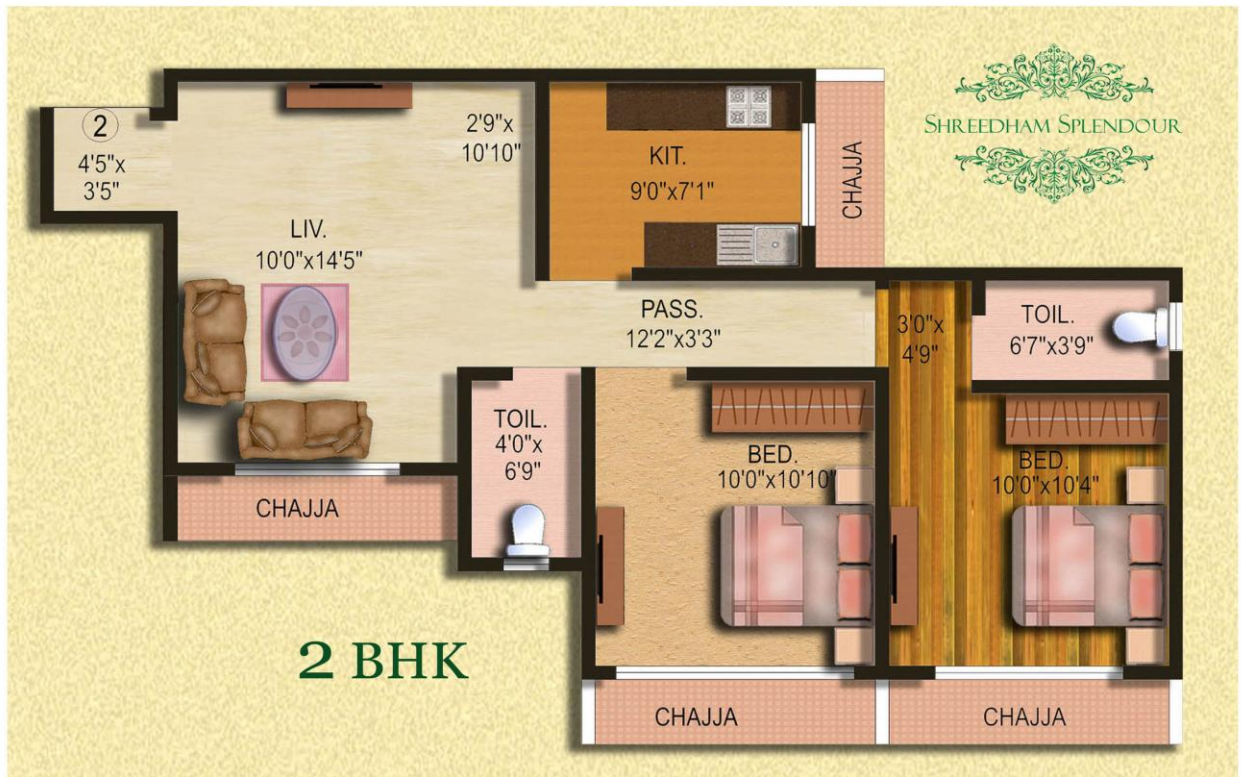


# RESIDENTIAL PLANS

## FLAT NO. 1 – 2BHK 561 SQFT.(Carpet)

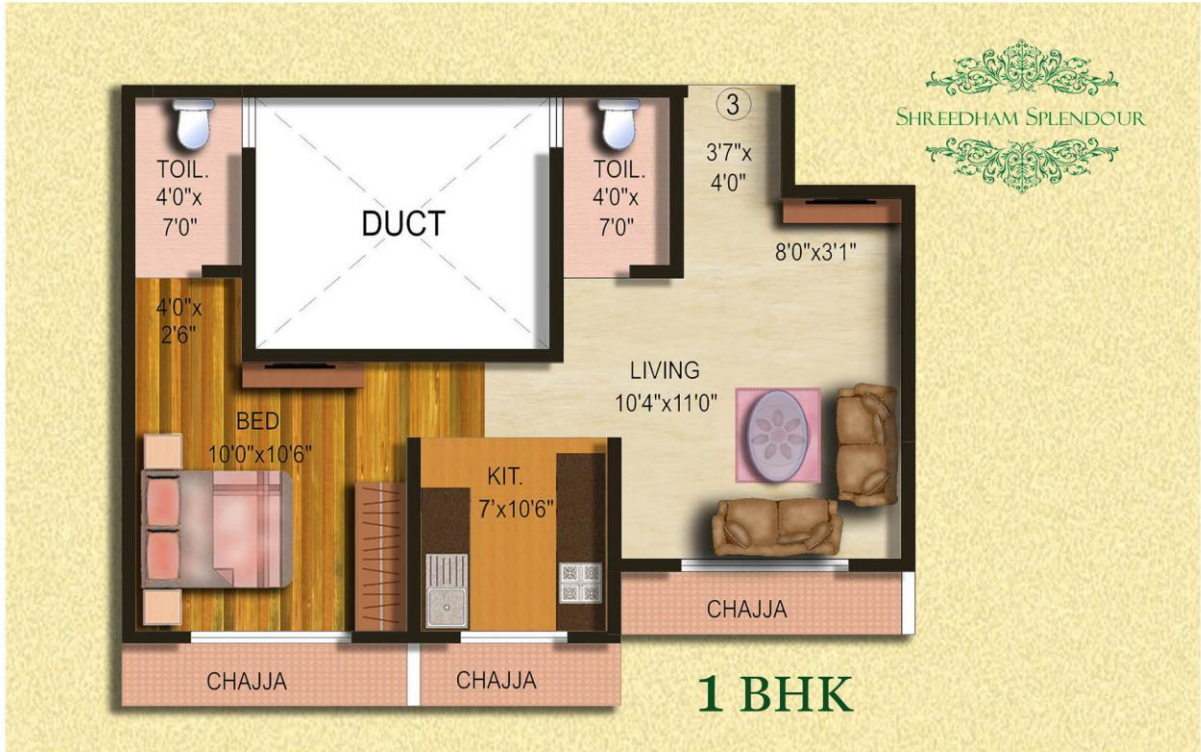


## FLAT NO. 2 – 2 BHK 578 SQFT.(Carpet)





**FLAT NO. 3 – 1 BHK 409 SQFT.(Carpet)**



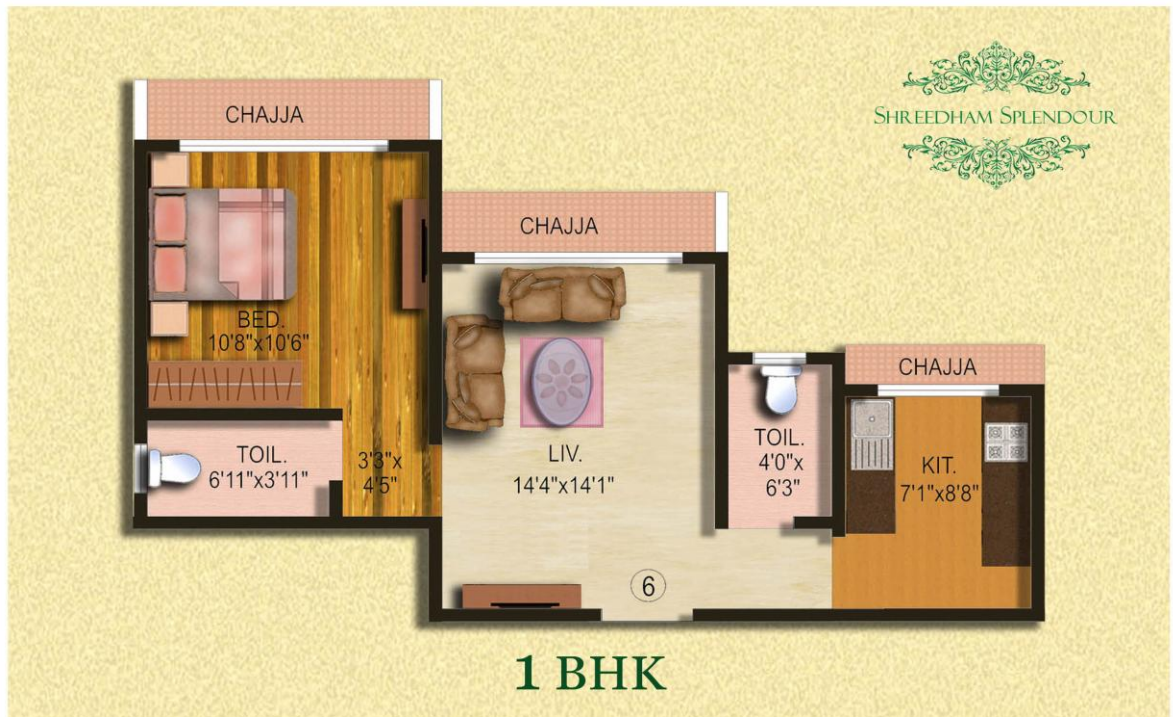
**FLAT NO. 4 – 1 rk 284 SQFT.(Carpet)**



**FLAT NO. 5 – 1 BHK 407 SQFT.(Carpet)**



**FLAT NO. 6 – 1 BHK 407 SQFT.(Carpet)**

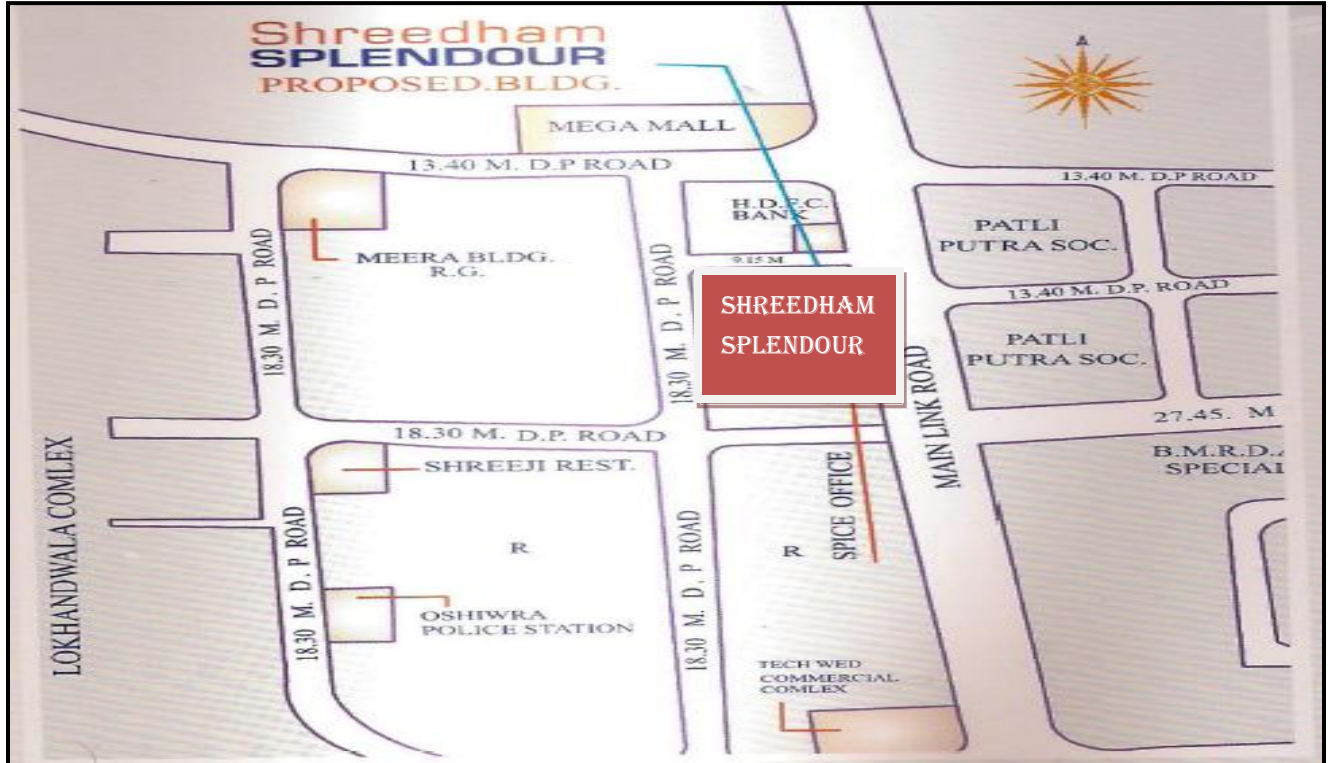




### PREFERRED DESTINATION

*The upcoming **"SHREEDHAM SPLENDOR"** will be an additional feature in the crown of the group. The complex is prestigiously located amidst the hub of Lokhandwala area on link road, Andheri (W). The complex is easily accessible by both S.V. Road & Link Road and upcoming Oshiwara railway Station. The Complex is surrounded by prestigious shopping malls such as Mega mall, Heera-Panna & others.*

**SHREEDHAM SPLENDOUR LOCATION MAP**



**LOANS ARE AVAILABLE FROM LEADING FINANCIAL INSTITUTIONS  
PROJECT IS APPROVED BY GOVERNMENT OF MAHARASHTRA**

<p><b>Shreedham Splendour Site Address</b></p>	<p><b>SHREEDHAM SPLENDOUR Jogeshwari Link Road, Near Oshiwara Bus Depot, Opp Anand Nagar Bus Stop, Jogeshwari (W)</b></p>
<p><b>Malad Corporate Office Address</b></p>	<p>SHREEDHAM CONSTRUCTION PVT LTD. 105 / 106, Vijay Industrial Estate, New Link Road, Next to Sai Honda Showroom, Chincholi Bunder, Malad (W), Mumbai-400064, Tel- 022-65241730, 022-65109288, 022-42336999, 022-28755111, Email:-shreedh333@hotmail.com</p>

**For more details please contact on 28755741/28755111/42336999 or email shreedhamsales@gmail.com**

[WWW.SHREEDHAMGROUP.CO](http://WWW.SHREEDHAMGROUP.CO)

WAITING FOR YOUR RESPONSE

THANK YOU



