



TRINITY'S  
**Natraj**  
Apartments  
Beyond dwelling space

APARTMENTS • NO RESTRICTIONS FOR NRIs  
INSTALLMENTS



TRIMURTY'S  
**Natraj**  
Apartments  
Beyond dwelling space

The Trimurty's Natraj Apartments is located in the heart of city, giving you the convenience of being connected to all the major business centres and shopping arcades of the city, with access to hospitals, banks, police station, etc.

### Location Map

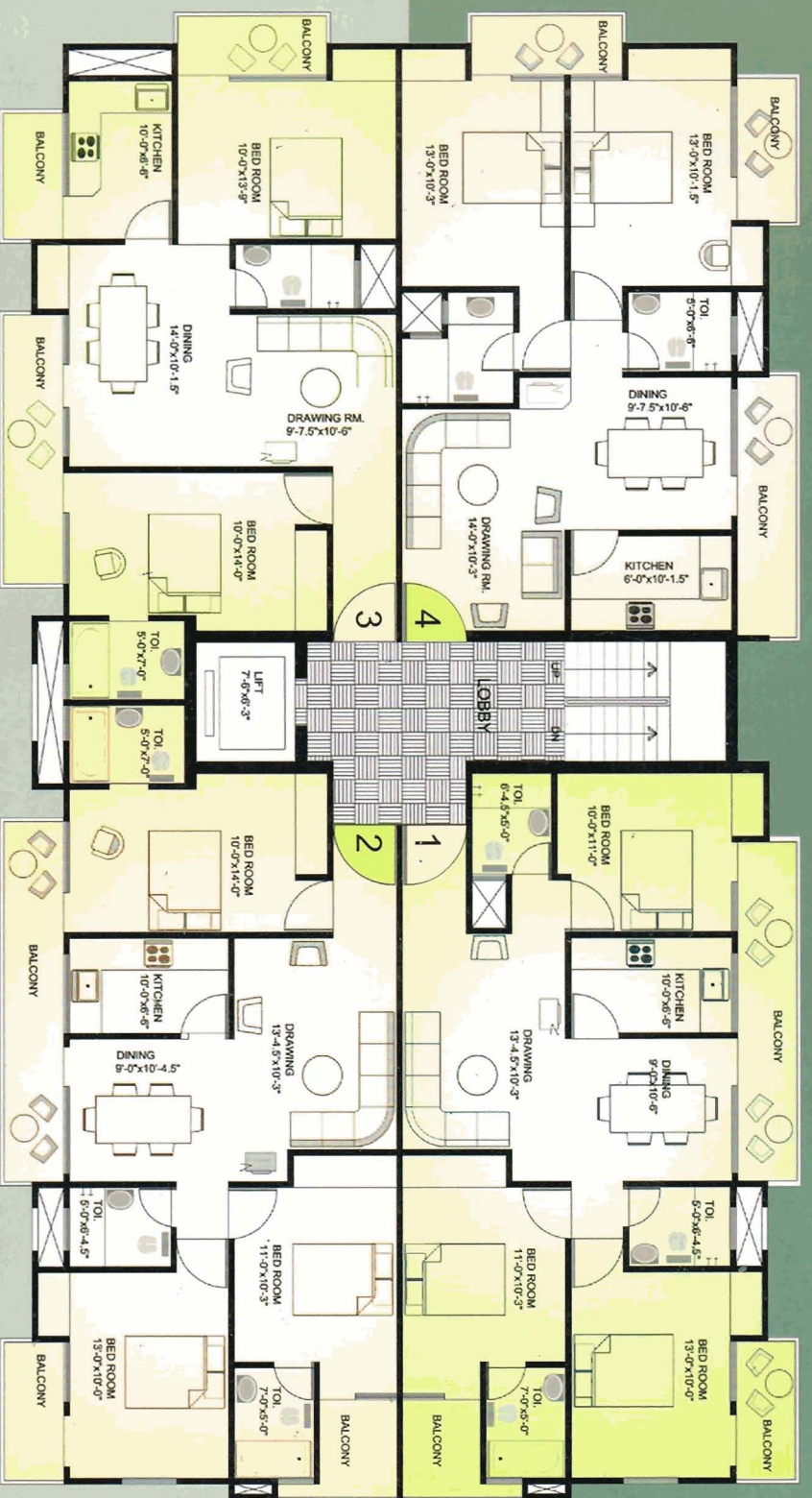


Home, the word takes on a whole new meaning at 'Trimurty's Natraj' Apartments. From the sheer convenience of being located in the heart of the city to great features, from the abstract design & colour scheme in harmony with nature to the landscaping, from the assurance of quality of Trimurty Colonizers & Builders Ltd. to the attitude in life that makes Trimurty's Natraj go beyond being a mere dwelling space. Or shall we say absolutely befitting to be your home.

#### Features :

- 2/3 Bedroom flats • Ample open and covered parking • Decent locality • Surrounded by major shopping places • Marble / granite flooring • Quality wood work • Attractive elevation • Round the clock security • Community room • Rain water harvesting system • Concealed wiring and plumbing
- 24hrs. water supply • Ceramic tiles in kitchen and toilets • Modern lift • Provision for cable tv facility
- Small provision store for daily family needs • Earthquake resistant structure • Design as per vastu
- Easy finance available from housing finance banks
- All designs, perspectives, specifications, layouts, plans, etc. are indicative and are subject to change. Accessories shown in some of the pictures in this brochure, such as furniture, cabinets, electrical appliances, light fittings, paintings, wall and floor texture, etc. are indicative/decorative and are not part of the sale offer.

TYPICAL FLOOR PLAN



TRIMURTY'S NATRAJ APARTMENTS

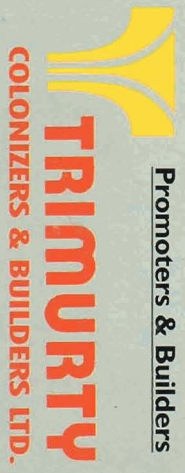
Architect

Kruti Consultants Pvt. Ltd.

Vastu Consultant

Sh. Devi Shanker Goyal

Promoters & Builders

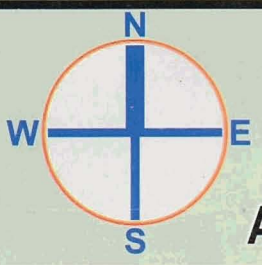


Visit us : [www.trimurti.com](http://www.trimurti.com)  
E-mail : [sales@trimurti.com](mailto:sales@trimurti.com)

- (1) 1335 Sq. Ft.
- (2) 1355 Sq. Ft.
- (3) 1150 Sq. Ft.
- (4) 1125 Sq. Ft.

Main Road

Adarsh Nagar Marg



Marketing Consultant

Surya Properties & Investment

501, Geeta Enclave, G-8, Vinoda Marg, C-Scheme, JAIPUR - 302 011

Ph.: 0091-141-468660(D), 374451, 407100, 4332200

Fax : 0091-141-372359 E-mail : [sales@trimurti.com](mailto:sales@trimurti.com)

Site Office

K-8, Adarsh Nagar Marg, JAIPUR