

MAN & SOIL Builders Pvt Ltd

Project Name :- AMITY HOMES

Address :- Door No. 1, Collectorate Colony 6th Cross Street Extension, Aminjikarai, Chennai - 600 029.



SPECIFICATIONS

STRUCTURE:- Column foundation with plinth beam, R.C.C roofing finished with water proofing course. 9"- Brick work for Outer Walls & 4 1/2"- Brick work for inner walls and smooth plastering. R.C.C lofts at all bed rooms and kitchen

FLOORING:- Quality commercial Vitrified Tiles (2x2) for Flooring & 4"-high skirting

KITCHEN :- Granite cooking platform, & S/S sink (18" x 24" - Size), Ceramic Tiles for dado (2' high), Tap provision for metro water. Provision for Aquaguard, Exhaust or electrical Chimney points

BATHROOM:- Each flat will have: one IWC, and one EWC, (White colour, Parry ware or equal quality) Antiskid Ceramic Tiles flooring, quality glazed ceramic Tiles for walls (7'-high) Metro or equal quality brand bathroom fittings.

WOODWORK:- Teak wood Finish polished Main Door, Teak wood for Main door frame and Commercial seasoned country wood for all inner Door Frames and Glazed UPVC windows quality HDF molded doors for Inner doors

ELECTRICAL :- Three Phase electrical Power supply, Provision for Power Back-up, Modular switches for all electrical points, Each room will have two light points, one fan point, one plug point. One Power point for A.C, provision for cable, telephone at Hall and bedrooms one Power point, light point, 5 Amps plug point & geyser point at Bath. Two points for lights, two plug points and one power point at kitchen

PAINTING:- Smooth Premium EMULSION finish over two coats of cement based Wall Putty for smooth finish. Synthetic Enamel for inner doors and M.S. Grills. Teak finish Varnish polish for Main door.

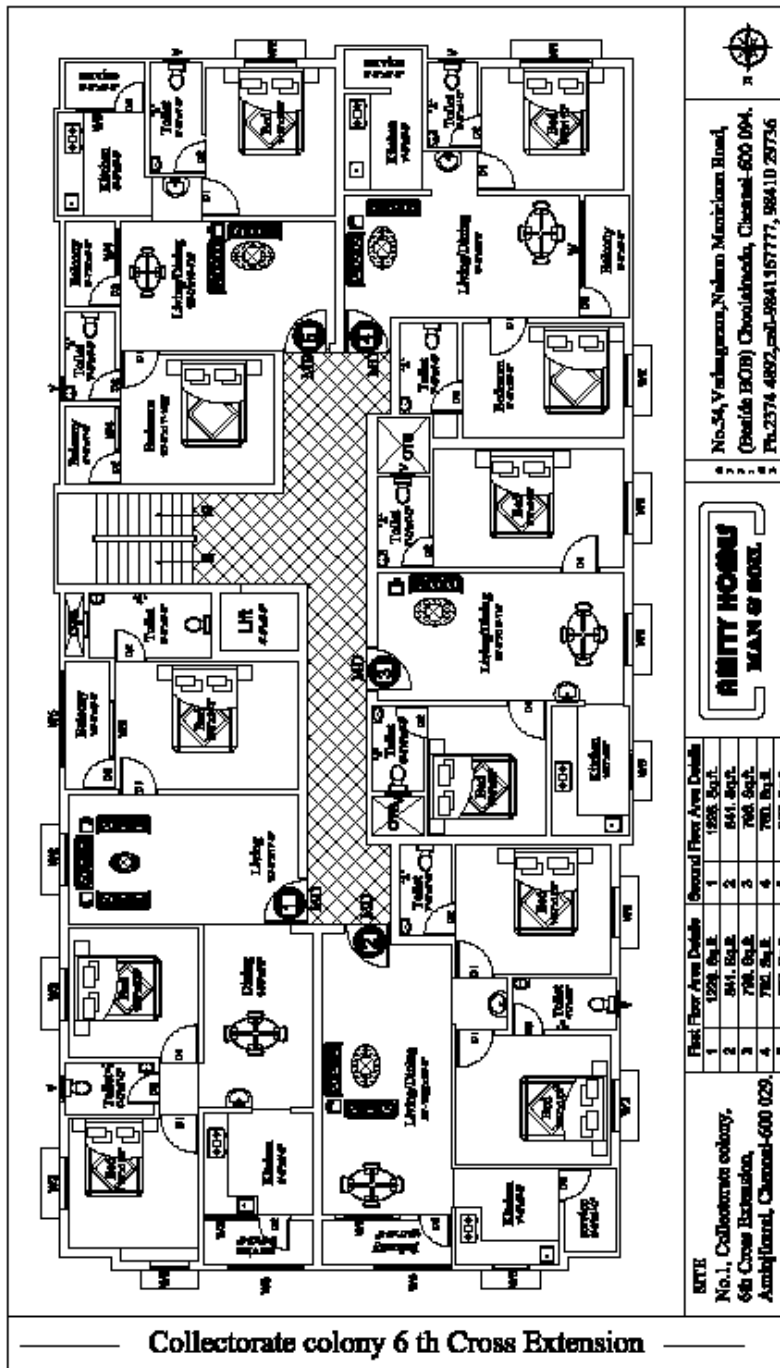
❖ Initial Payment At the Time of booking	-	20%
❖ At the time of Basement Completion	-	25%
❖ At the time of Ground Floor Roof Finishing	-	15%
❖ At the time of First floor Roof Finishing	-	15%
❖ At the time of Second floor Roof Finishing	-	10%
❖ At the time of Starting the plastering work	-	10%
❖ On completion or at the time of handing over	-	5%

4. Accessibility

❖ Railway Station	-	10 mins
❖ Hospitals	-	5 mins
❖ Colleges / Schools	-	10 mins
❖ Bus Stop	-	5 mins
❖ Markets / Super Markets	-	5 mins
❖ Worship Places	-	5 Mins

Note: - Stamp Duty, Registration Charges and Deposits for essential Connections (Water, Drainage, Electricity and Property Tax Assessment), Applicable Govt Taxes and Covered Car Park are not included in the Price.

MAN & SOIL Builders Pvt Ltd	044 - 2374 4892
No.54, Vadaagaram,	+91 98410 29736
(Besides Bank of Baroda)	+91 98415 67777
Nelson Manickam Road,	+91 98415 03636
Choolaimedu, Chennai - 600 094.	



FIRST FLOOR	SECOND FLOOR
FLAT - 1 - 1226 Sq.ft.	FLAT - 1 - 1226 Sq.ft.
FLAT - 2 - 841 Sq.ft.	FLAT - 2 - 841 Sq.ft.
FLAT - 3 - 796 Sq.ft.	FLAT - 3 - 796 Sq.ft.
FLAT - 4 - 750 Sq.ft.	FLAT - 4 - 750 Sq.ft.
FLAT - 5 - 907 Sq.ft.	FLAT - 5 - 907 Sq.ft.

Information herein is subject to change as may be required by the promoter/Builder and cannot form part of an offer or contract. While every reasonable care has been taken in providing this information. The promoter / Builder cannot held responsible for any inaccuracies. All areas in the brochure are super built up area only. The elevation is an artist's impression and is for reference only