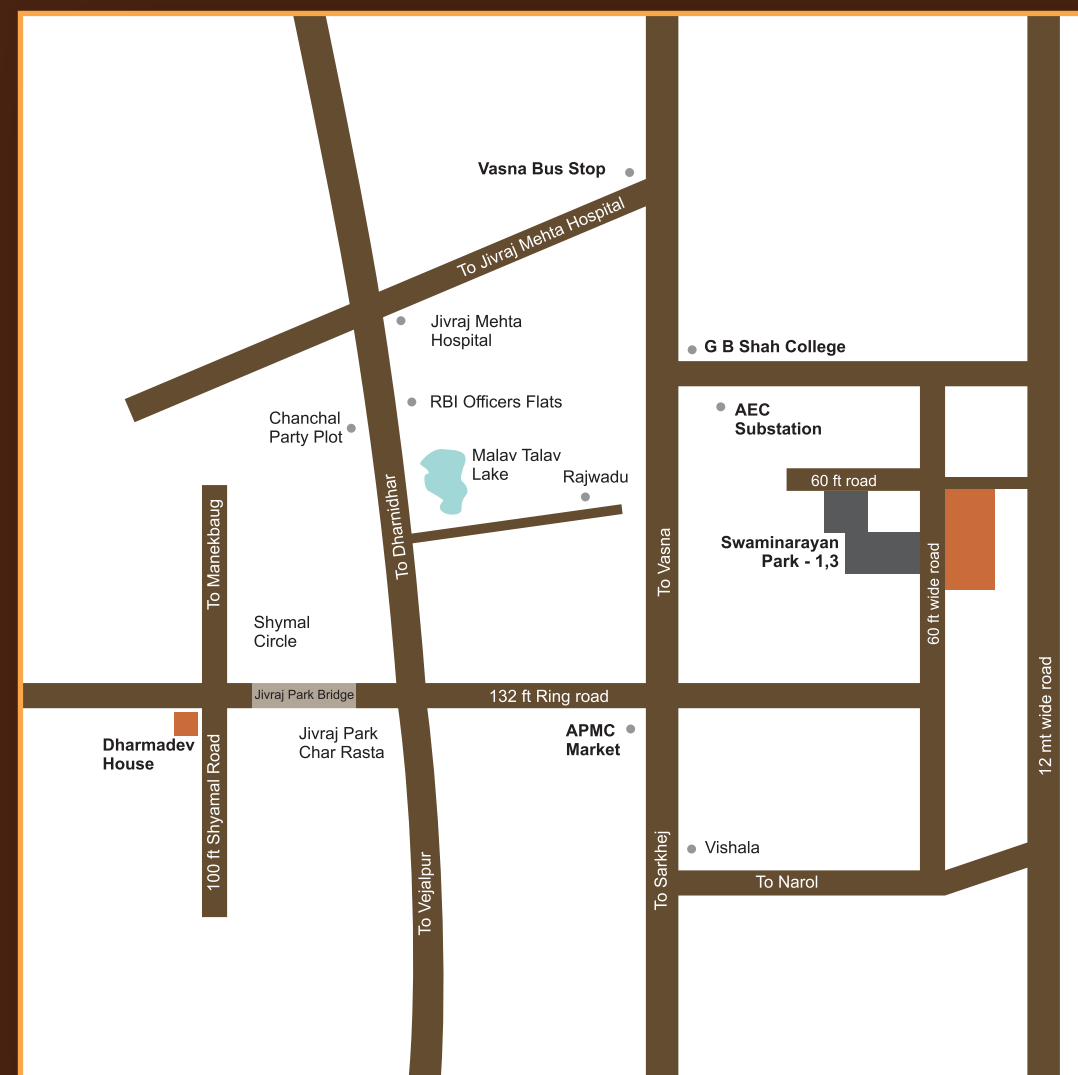


## KEY PLAN



Site Address  
Swaminarayan Park-2,  
Opp. Swaminarayan Park-1, B/h G.B.Shah College,  
AEC Sub Station Road, Vasna, Ahmedabad.  
Ph.: 99099 79714 / 99798 54039

ARCHITECT  
VIPUL MEHTA



94274 90412

Structural Engineers  
HEMAL PARIKH  
Ph.: 079 26924288

# LIFE STYLE APARTMENTS



SWAMINARAYAN  
PARK



2 BHK 125/130/135 SQ\_YDS. APARTMENTS



VERY CLOSE TO PALDI CIRCLE, SATELLITE,  
HI-WAY AND SABARMATI RIVER FRONT

WELCOME TO A PLACE THAT YOU CAN CALL YOUR HOME.

A DESIRABLE AND CONTEMPORARY PLACE WITHIN

THE REACH OF YOUR HARD EARNED MONEY.

A PLACE WITH SAFE & SECURE ENVIRONMENT.

A PLACE WHERE LIFE'S BETTER SHADES SURROUND.

WHERE THE AIR IS FRESH WITH SENSE OF LUSH GREEN LAWNS.

A PLACE WITH SURPRISINGLY DREAM HOMES JUST FOR YOU.





ATTRACTIVE ENTRANCE  
FOYER AT GROUND FLOOR  
WITH SECURITY CABIN.



AMPLE BASEMENT PARKING



MORE THAN 77% OPEN SPACE.



AMPHITHEATRE.



GREEN SPACE FOR PARTY ETC.,





CHILDREN PLAY AREA



SENIOR CITIZEN SIT OUT



CYCLING/SKATING RINK,



SPLASH POOL



HOME THEATRE



GYMNASIUM



DROP ZONE FOR KIDS,



INDOOR GAMES



JOGGING TRACK



STREET LIGHTS



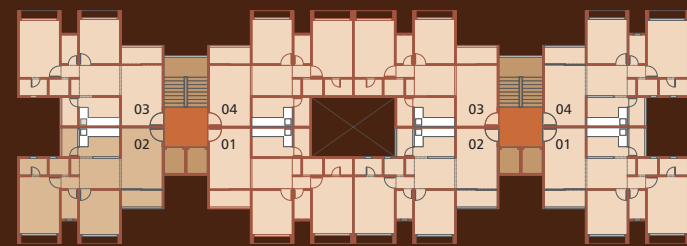
TERRACE PROVIDED WITH  
ADDITIONAL THERMAL INSULATIONS  
FOR FURTHER COOLING

# GROUND FLOOR PLAN

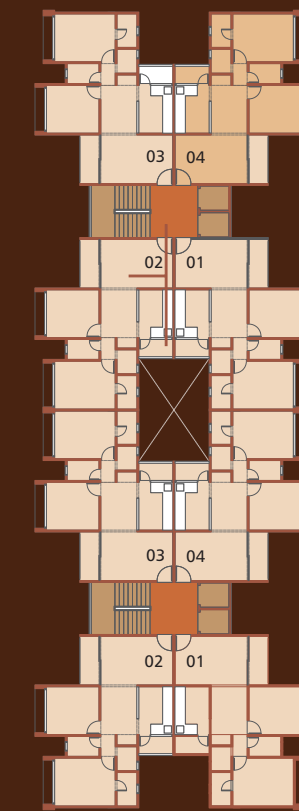


# TYPICAL FLOOR PLAN





TYPE **1** 135 SQ. YDS.  
BLOCK : E, F, I, J



TYPE **2** 130 SQ. YDS.  
BLOCK : C, D, G, H



TYPE **3** 125 SQ. YDS.  
BLOCK : A, B

## S P E C I F I C A T I O N

**WALLS**  
OUTSIDE DOUBLE COAT SAND FACED PLASTER WITH ACRYLIC PAINTS.  
INSIDE SINGLE COAT PLASTER FINISHED WITH BAKING COAT, BIRLA PUTTY IN ALL INTERNAL WALLS.

**FLOORING**  
ALL ROOMS VITRIFIED FLOORING

**DOORS**  
MAIN DOOR FLUSH DOOR WITH BRASS/SS FITTINGS  
REST FLUSH DOORS WITH MARBLE/GRAVITE FRAMES.

**WINDOWS**  
FULLY GLAZED ALUMINUM SLIDING WINDOWS / CP TEAK WOOD FRAMES  
WITH GLASS SHUTTERS, EQUIPPED WITH AND BRASS FITTINGS.

**KITCHEN**  
MIRRORED POLISHED GRANITE PLATFORM WITH SS SINK.  
GLAZED TILES UP TO LINTEL LEVEL (ABOVE PLATFORM)

**BATHROOM**  
GLAZED TILES UP TO LINTEL LEVEL. ADEQUATE CP FITTINGS, COLORED WASH BASIN & EUROPEAN TYPE WC PAN.

**ELECTRIFICATION**  
GEYSER POINT IN ALL BATHROOMS. ADEQUATE NOS. OF POINTS ALONG WITH ELCB & MCB.  
ISI MARKED CONCEALED COPPER WIRING WITH MODULAR SWITCHES.

## N O T E S

Internal changes shall be done with prior permission and shall be charged extra in advance.

Changes in external elevation and in structural elements shall not be permitted.

Project consultants have the right to change or revise altogether, the scheme or part of scheme or any details therein and make one or more sub-divisions of any unit or combine two or more units of the scheme and all such changes, revisions sub-divisions and / or combinations shall be binding to all members.

All dimensions shown in the plans are approximate, average, unfinished and subject to variations.

Expenditure towards electric power supply system (i.e. rising mains up to the units, AEC cable cost, etc.) shall be borne by the members.

A.M.C. charges/fees, fire safety charges, water/drainage charges/fees, parking deposits/percolation well charges/deposit, yearly maintenance of drainage and water supply payable to A.M.C. etc. shall be borne by the members.

Stamp duty, registration fees charges, service tax & VAT are not included in the transaction (cost) and to be paid by the members individually as applicable.

Maintenance deposit for each unit to be paid extra at the time of taking possession.

Delay in installment will attract interest @ 24% p.a.

This Brochure Shall not be treated as an official document. it is only for information & easy reference of the project.