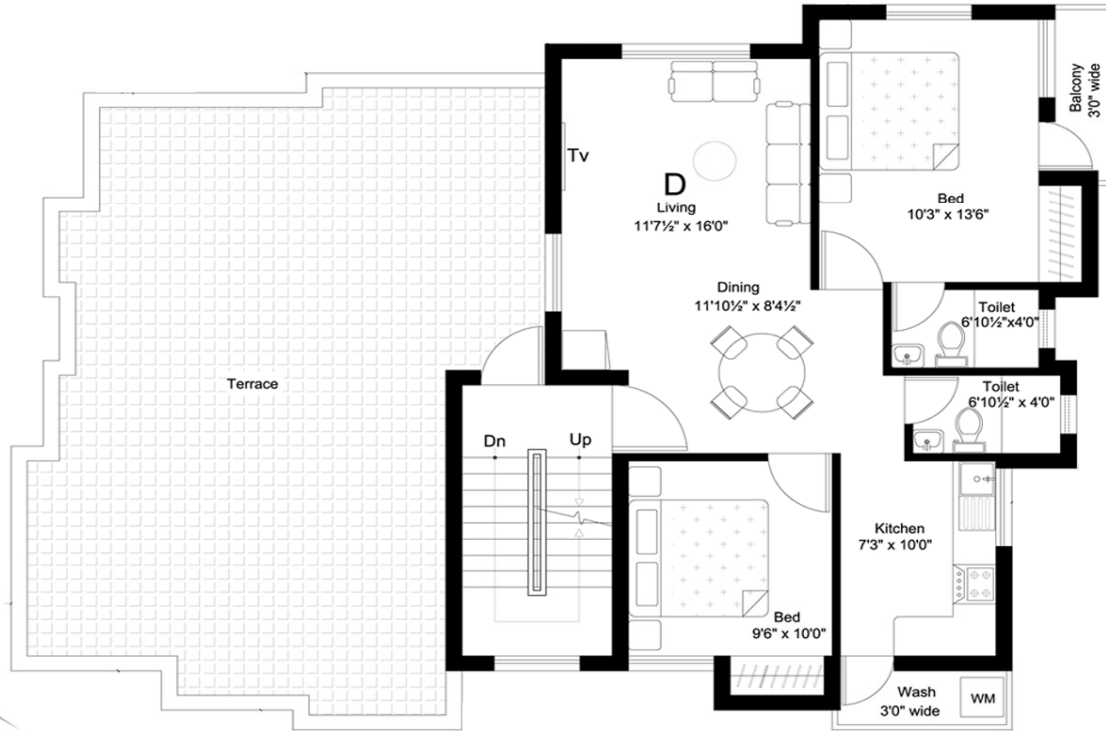


EAST FACING PLOT
GROUND FLOOR PLAN



EAST FACING PLOT
FIRST FLOOR PLAN





EAST FACING PLOT
SECOND FLOOR PLAN

SPECIFICATION

- STRUCTURE** : RCC Framed Structure, 9” Brickwork for outer walls.
- DOORS** : Teakwood Frame with Teakwood panel doors for the Main Entrance. First quality country wood frames with Flush Shutters for all internal doors.
- WINDOWS** : Country wood frames with Glazed pin type shutters.
- FLOORING** : 24” X 24” Vitrified Tiles and Skirting with same Tiles.
- KITCHEN** : a. Polished Black Granite 19mm thick for platform over a RCC Slab with edge nosing.
- b. Stainless Steel Sink with drain board with single bowl.
- c. Glazed Tiles for walls up to 4’ 0” height above Platform.
- BED ROOMS** : Bedrooms shall have a space for built in open Wardrobe and open Loft.
- BATH ROOMS** : Following amenities are provided in each bath rooms :
- a. Antiskid Ceramic Tiles for Floors.
- b. Glazed Tiles for walls up to 7’ 0” Height.

c. European water closet with slim line water tank with Health Faucet for all bathrooms – White Colour

d. C.P.Fittings and Shower.

e. Wash Basin for all bathrooms – White.

f. Geyser provision for all Bathrooms.

PAINTINGS

: a. Asian Ace/Equivalent Exterior Emulsion for outside walls.

b. Asian Tractor Emulsion / Equivalent for inside walls.

c. Enamel paintings for Grills, Doors and Windows.

d. French polishing for the Main Door.

ELECTRICAL

: Concealed wiring using PVC conduits recessed switch boards with Modular Switches, three phase power connection with independent meter.

ELECTRICAL POINTS WITHOUT FITTINGS :

HALL CUM DINING : **a. Light - 2 Nos. b. Tube - 2 Nos.**
c. Fan - 2 Nos. d. Plug Points-5Ams.-4 Nos.
e. Fridge Point – 1 No. f. Telephone Point – 1 No.
g. T.V. Point - 1 No.

MASTER BEDROOM : **a. Light - 2 Nos. b. Tube - 1 No.**
c. Fan - 1 No. d. Plug Points-5Ams.-2 Nos.
e. Foot Lamp - 1 No. f. Telephone Point – 1 No.
g. T.V. Point - 1 No. h. A/C Point – 1 No.

SECOND BEDROOM : **a. Light - 2 Nos. b. Fan - 1 No.**
c. Plug Points-5Ams.-2 Nos. d. Foot Lamp – 1 No.
e. A/C Point – 1 No.

BATH ROOMS : **a. Light - 2 Nos. b. Plug Points-5Ams. – 1 No.**
c. Geyser Point – 1 No. d. Exhaust fan Point – 1 No.

KITCHEN

: **a. Light** - 1 No. **b. Tube** - 1 No.

b. Exhaust Fan - 1 No. **c. Plug Points-5Ams.-2 Nos.**

- 15 Ams. - 1 No.

SERVICE AREA

: **a. Light** - 1 No.

b. Washing Machine Point - 1 No.

WATER SUPPLY

: **Common Bore Well, Overhead Tank and Sump with 12000 liters capacity.**

SANITATIONS

: **All Sanitary waste to be taken through 4" PVC 6 KG pipe to manhole chambers and then to Septic Tank.**

OTHERS

: **All extra work other than given in the standard specification will be done at the extra cost.**