



a private township



In homes that are as sprawling as the lawns that hold them.  
Built with the most luxurious of natural materials.  
In styles that are as avant-garde as they are alluring.

But what is truly aspirational is the architecture  
that delivers spectacular living spaces  
while making sure that the little considerations,  
ones that make people the happiest, are all in place too.

Welcome to G99, where aspirations are realized.



a private township





Main Entrance at Gurgaon 99





## Introducing Gurgaon 99

Inspired by Spain, with its beautiful cities and towns and its traditional as well as futuristic architecture comes G99, an exclusive private township.

Situated on the upcoming 150m wide Dwarka Expressway, with the Delhi metro running parallel and the Indira Gandhi International airport just 15 minutes away, Delhi and the rest of the world are just a stone's throw away.

Nestled in this 106 acre beautifully landscaped township, is your villa.

A luxurious mix of sprawling private villas and green spaces ensure privacy even in the heart of a vibrant community. With a perfect blend of residential and commercial space, this is town living at its self contained, opulent best.

Bienvenido  
welcome







Aerial View of Gurgaon 99



# Architect's Note

*The garden is but the prolongation of the house...*

*- Charles Platt*

Inspired by the sun-loving architectures of the past, and in homage to the decorative arts, this community is designed to provide an elegant, private and tropical lifestyle.

The landscape bridges the spatial experience between private, public and semi-public. The architecture gestures to the gardens through loggias, sun porches, courtyards, patios, terraces. Here, the gardens are every bit as sacred as the houses. The houses are intended to be a sanctuary from the world, secure and sheltering, yet detailed, intimate and comfortable. The totality of the landscape and architecture expressed in a physically and visually unified composition brings about a strong identity of place, community and home life.

*casas para toda la vida  
homes for a lifetime*



Homes opening into landscaped greens



# Master Plan



LEGEND

- Aurora (645 Sq. Yards)
- Magdalena (426 Sq. Yards)
- Lucida (344 Sq. Yards)
- Bella (295 Sq. Yards)
- Hermosa (301 Sq. Yards)
- Candelaria (258 Sq. Yards)

- 1 Amenities include a soccer field, club house, tennis courts, basketball court, swimming pool & skating rink
- 2 Landscaped theme gardens, play parks & bridges running over water bodies
- 3 Manicured grass lawns and trees running alongside pedestrian, jogging & cycling tracks
- 4 Nursery school, Primary schools & Nursing home
- 5 Commercial complex on the 150m wide expressway

\*Note: Master Plan approved by the Director, Town & Country Planning Department, Haryana Urban Development Authority (HUDA)





Front Elevation of Villa Aurora

## Homes

With more than forty- five percent of the entire township dedicated to open spaces, and your own private villa built on plot sizes varying from 250 sq yds to 650 sq yds, beautifully landscaped space is what you have in abundance.

Keeping the spirit of Spain's diverse culture alive, we offer you 6 different size options - Aurora, Magdalena, Lucida, Hermosa, Bella and Candelaria; each with atleast two variants in floor plan and elevation, so that your home can be as you like it - flamboyant as a flamenco dancer or majestic as a matador!

*espacioso vida  
spacious living*







Streetscape at Gurgaon 99



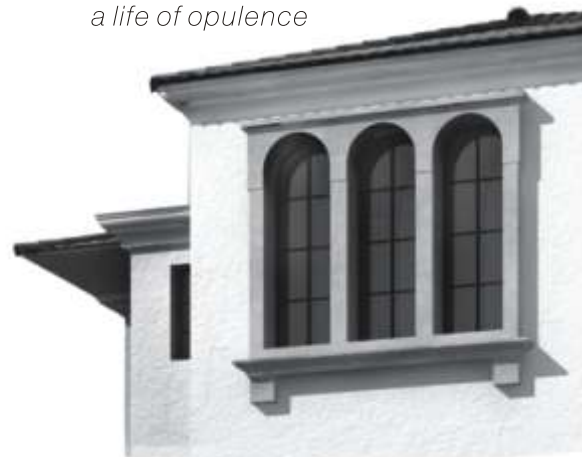
# Specifications

The only specification is luxury. Be it in the flooring we use for all the living spaces or the avant-garde fixtures and fittings that go into the bathrooms, or even the modular kitchen that comes with every conceivable gadgetry.

These exquisite interiors though, come with a humble respect for nature, so solar energy is used for the common and garden lightings and, to replenish nature's ground water, a hi-tech rain water harvesting system is in place.

This blend of the modernistic and the natural, coupled with new-age security systems, creates for you in G99, a safe, stylish and serene haven, you'd love to call home.

*una vida de opulencia  
a life of opulence*



Living Room in Villa Lucida





# Facilities & Amenities

There are schools, a club house, a spa, a soccer field, jogging and cycling tracks, tennis and basketball courts, play parks, a shopping complex, restaurants, cafes, a nursing home, a health center and pharmacy... there are 600 villas... and there's you.

All of which have been so beautifully interwoven, that just stepping into G99 will take your breath away.

*el mundo está a su puerta  
The world is at your doorstep*





# Promoter Profile



The Uppal Group, a highly respected name in the real estate development, has become synonymous with luxury and excellence. Be it boutique residences or group housing, commercial complexes or IT parks, Hotels or SEZs, Uppal's exemplifies the high standards of quality that we stand for.

Growing consistently since inception in 1979, The Uppal Group has completed over 5000 quality units encompassing an area of more than 30 million sq ft. Having successfully introduced luxury to all real estate verticals, The Uppal Group has projects worth Rs. 5,000 crore underway.

Our commitment to quality and thirst for innovation is at the core of the iconic architecture that is showcased in our projects. No wonder we are churning out award-winning pieces like The Orchid.

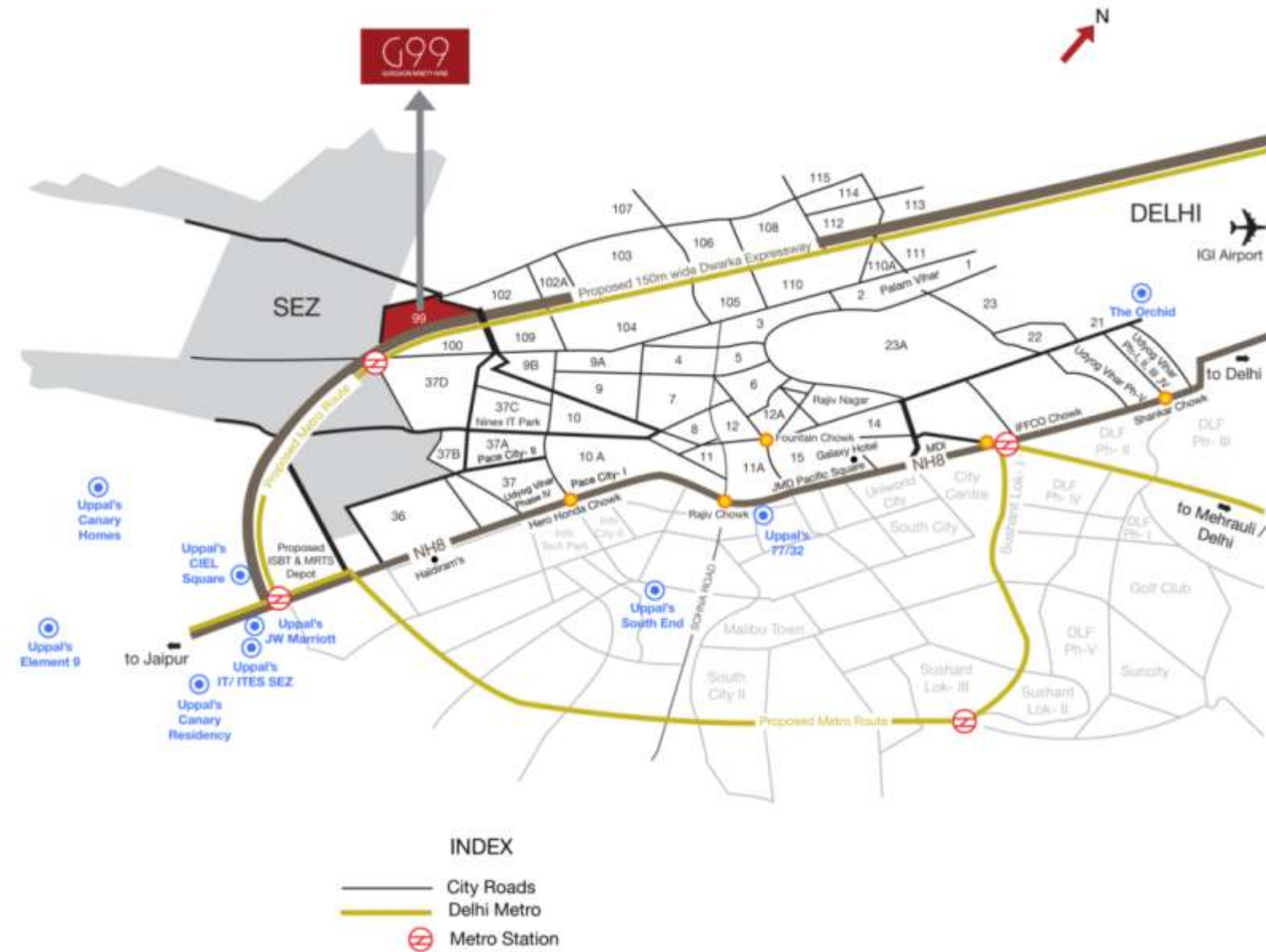


At QVC Realty, building homes is all about fulfilling your needs, your aspirations, and providing you with the best customer experience.

Led by a dynamic and highly qualified team, QVC Realty Co., India's first venture capital backed real estate development company, is focused on developing large, integrated mixed-use projects in major Tier I and Tier II cities in India. QVC currently has projects in Bangalore, Gurgaon, Pune and Chikmagalur.

Funded by IL&FS, India's leading infrastructure development and finance company, QVC is challenging itself to change the face of real estate business in India with an obsessive focus on Quality and Value for the Customer.

# Location Map



\*Not to scale