





Sylvan Premium  
Layout Plan





## Amazing Amenities

### IN-USE COMMON AMENITIES

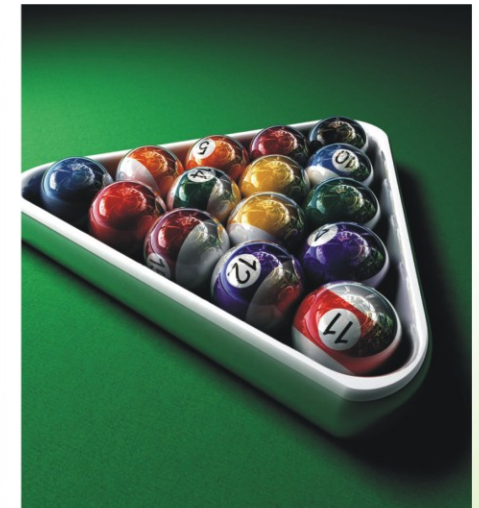
- A) Landscaped garden with Party Lawn.
- B) Children play area with equipment.
- C) CLUB HOUSE: Gymnasium, Multipurpose Hall with indoor games, Pantry, Gents toilet, Ladies toilet, Office cum Reception, conference room, kitchen, store room, Swimming pool & baby pool with deck.
- D) Car parking in stilt & basement with provision of adequate visitors parking.
- E) Generator backup for lifts and pumps.
- F) Two automatic lifts from stilt floor to 11th floor.
- G) Kota stone for staircase; ceramic tile risers & skirting.
- H) Chequered tile flooring in parking.
- I) Internal roads in paving blocks.
- J) Vermi-culture for wet garbage disposal system.
- K) Impressive main gate with Security Cabin.



Gymnasium

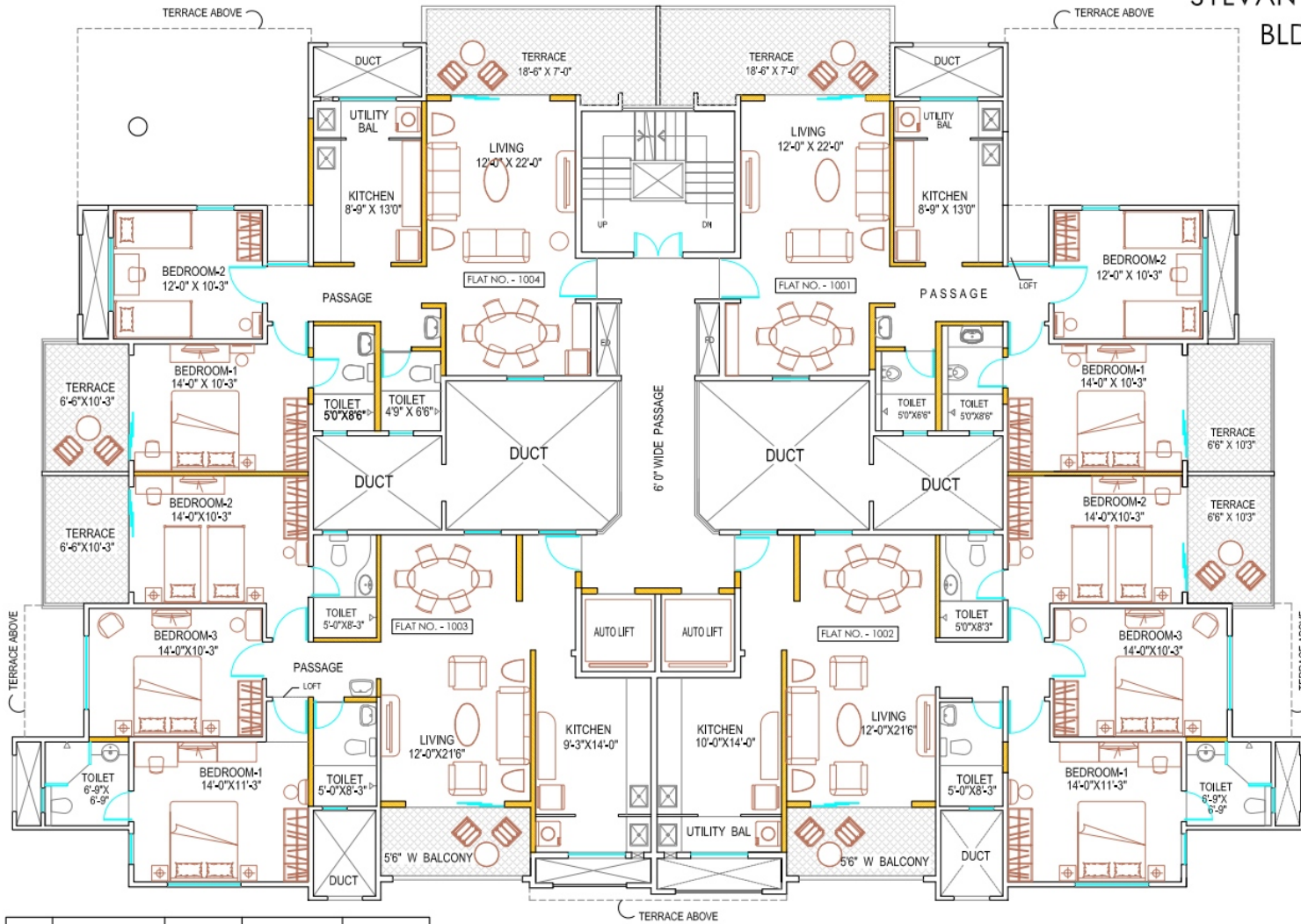


Elevator



Pool table

SYLVAN HEIGHTS -II  
BLDG. 'E'



Sr. No.	Flat Nos.	Flat Area (Sq.Ft.)	Terrace Area (Sq.Ft.)	Total Area (Sq.Ft.)
1)	1001,1004	1007	251	1258
2)	1002	1440	83	1523
3)	1003	1428	83	1511



( 10th FLOOR )

NAIKNAVRE DEVELOPERS PVT. LTD.  
1204/4 GHOLE ROAD,  
SHIVAJINAGAR ,PUNE-5



A Kingly Paradise  
-The Living & Dining Room



Dining room



Absolute in comfort  
-The Master Bedroom



Guest bedroom



- Airport 16 Kms
- Deccan Gymkhana 6 Kms
- Pune Railway Station 13 Kms
- Shivaji Nagar 6 Kms
- M G Road 14 Kms
- Koregaon Park 15 Kms
- Pune University 3 Kms
- Hinjewadi 9 Kms
- Pimpri / Chinchwad 13 Kms

