

# Rosewood Apartments



# Site Plan

## Stilt Level Plan

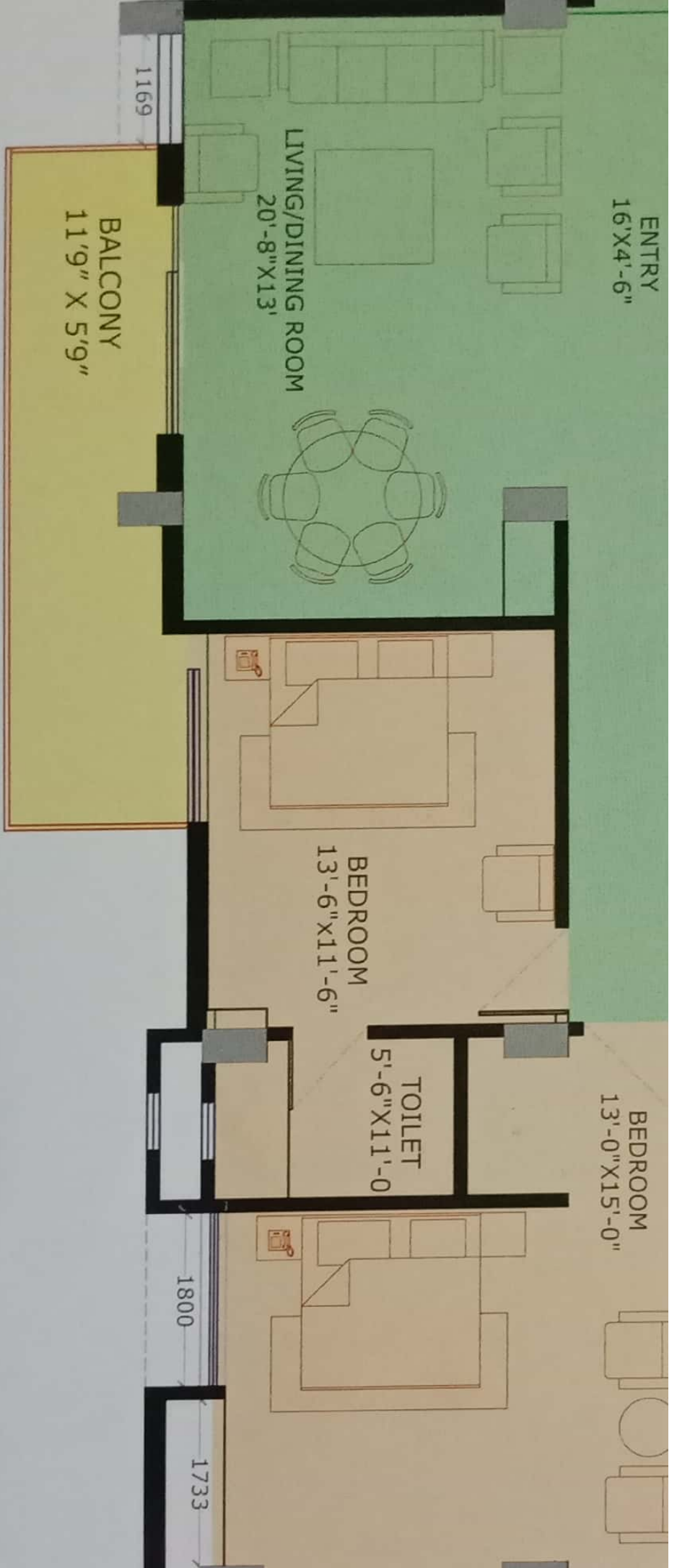


## Basement Level Plan









	Carpet Area as per Rera	Buildup Area	Super Buildup Area
B	1410 Sqft.	1745 Sqft.	2085 Sqft.

# Interior Layout of Typical Floor Plan



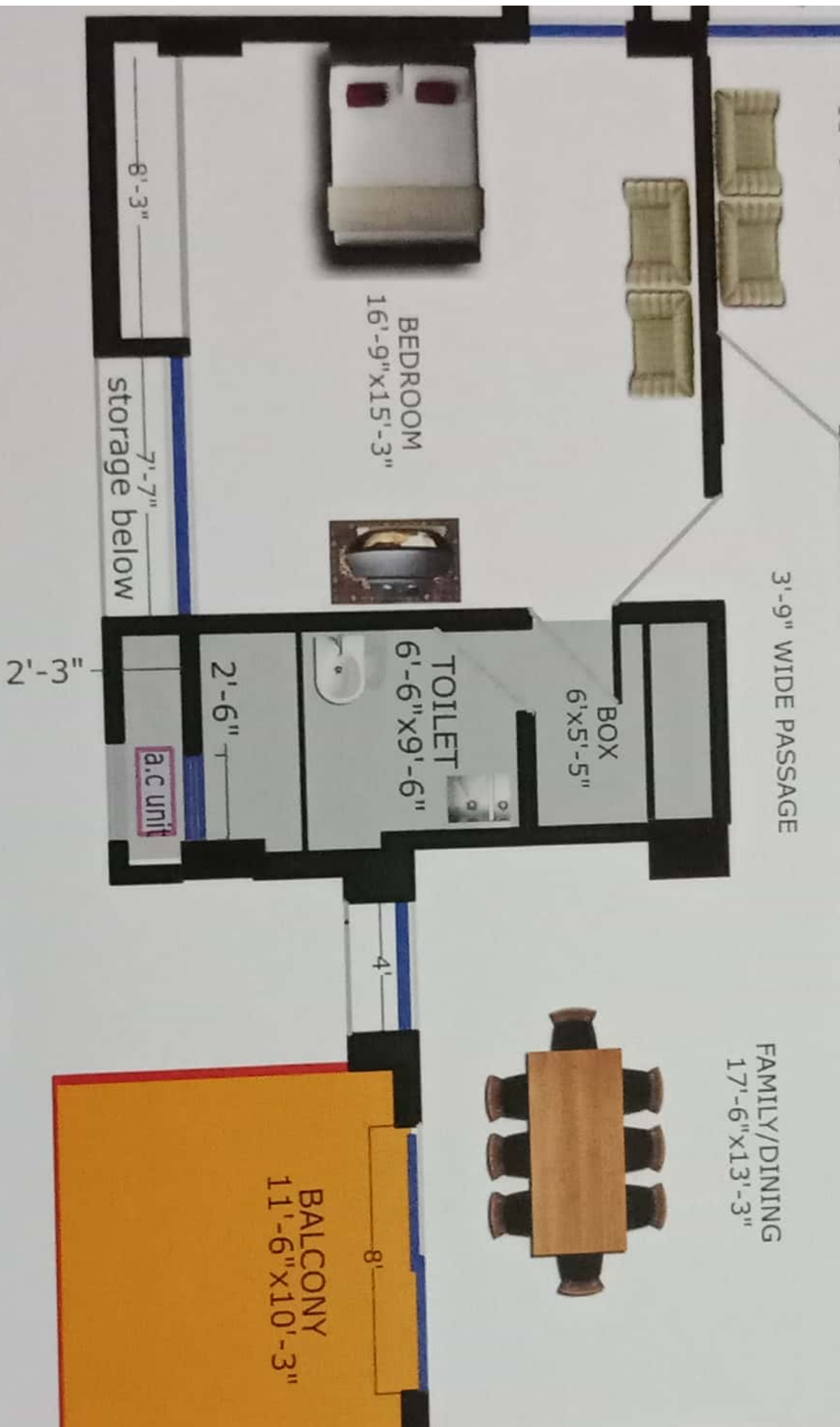
**A**

**B**

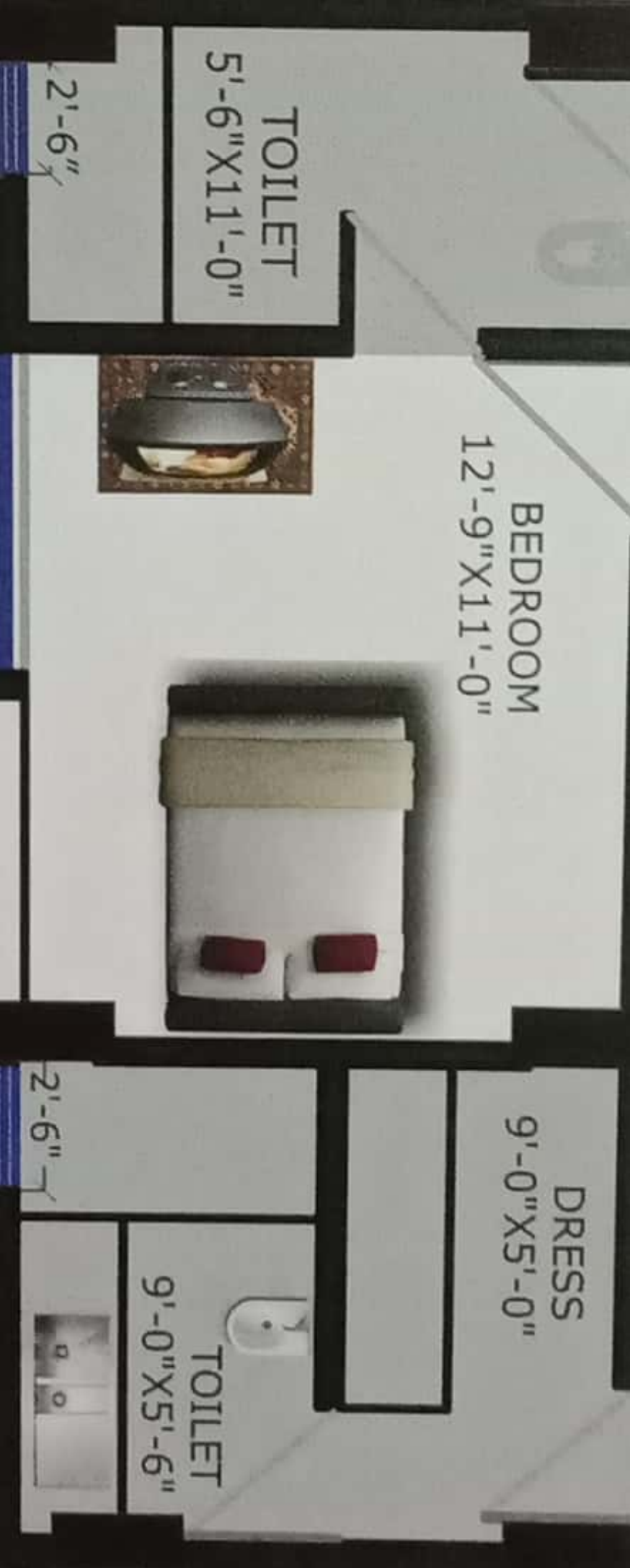
	Carpet Area as per Rera	Buildup Area	Super Buildup Area
A	1730 Sqft.	2155 Sqft.	2665 Sqft.
B	1980 Sqft.	2410 Sqft.	2975 Sqft.







Carpet Area as per Rera		Buildup Area	
A	1730 Sqft.		2155 Sqft.



# Interior Layout of Typical Floor Plan



	Carpet Area as per Rera	Buildup Area	Super Buildup Area
A	1586 Sqft.	1950 Sqft.	2365 Sqft.
B	1984 Sqft.	2442 Sqft.	2950 Sqft.

Tower - 2







	Carpet Area as per Rera	Buildup Area	Super Buildup Area
B	1984 Sqft.	2442 Sqft.	2950 Sqft.

Interior Layout of Typical Floor Plan



## LIVING AND DINING AREA AND BEDROOM

**Flooring** - Vitrified Tiles of Rak/Kajaria or Equivalent

**Wall / Ceiling Finish** - POP

## KITCHEN

**Flooring** - Tiles/ Vitrified Tiles

**Counter/Dado** - Granite Slab and Dado of Ceramic Tiles

**Water Connection** - Provision for Hot & Cold Lines with Heavy Duty Pipe and fittings of reputed make

**Fittings / Fixture** - SS Sink and Mixer

**Wall / Ceiling Finish** - POP

## TOILETS

**Flooring** - Anti Skid Tiles/ Vitrified Tiles

**Wall Finishing** - Vitrified /Ceramic Tiles

**Water Connection** - Provision for Hot & Cold Lines with Heavy Duty Pipe and fittings of reputed make

**Sanitary Ware/ Cp Fitting** - Superior Quality Sanitary Wares and CP Fittings will be Provided Cera/ Kohler/ Grohe or Equivalent

**Ceiling Finish** - POP

## FIRE FIGHTING SYSTEM

As Required by the Fire Department of standard make & as per the specification, an efficient system as recommended by consultant.

## DOORS APARTMENT

**Internal Doors** - Good Quality Flush Doors.

**Windows** - Three Track Sliding UPVC Wintech /Fenesta or Equivalent.

**Generator** - Sound Proof Generator Sufficient to Provide 7Kva for 3 BHK and 10 Kva for 4 BHK with auto change over for each unit.

**Electric Line** - Concealed ISI marked fire Resistance Copper Wiring with Modular Switches

## ELECTRICALS

**Electric Panel Mains** - Individual Electrical Meter for each Apartment as Per Rules

**Electrical Distribution Box** - Electric Panel with L/T or Equivalent Switchgear, MCB Etc. Main and Generator.

**Transformer** - Transformer of reputed make as per requirement.





