



SAND DUNE CONSTRUCTION (P) LTD.

An ISO 9001 Company
Reg. Office : A-8, Shyam Nagar, Jaipur Ph: 0141-2293395
Admn. Office : Ashiyana, D-29, Shanti Path, Polarkar Colony,
Ph: 2623443, 9314874679, 9166707111, 9829009410
Fax: 91-141-2360482, E-mail: sdcjpr@gmail.com
Website : www.sdcjpr.com

Architects
SPACE GRID
Architects, Engineers, and Interior Designers
C-49B-6, Vidyut Apartment, Paras Marg
Near Janta Store, Bapu Nagar
Tel: 93145-10603, 93149-18766

Disclaimer : This Brochure is purely conceptual and not a legal offering. Further the Promoters/Architect reserve the right to add/delete/modify any details/specifications/illustration mentioned

Doc No: SDC/0141-2221591_3026231011



SDC
GANESH KRIPA
Premium Residential Apartments



live central • live peaceful • live @ sdc's ganesh kripa



The Group

SAND DUNE CONSTRUCTION PRIVATE LIMITED was incorporated in 1997 and registered in Registrar of Companies, Jaipur.

The company is a professionally managed multifaceted Real Estate company managed by a team of Architect & Engineers and engaged in the field of construction of multistory Apartment Complexes in Jaipur, for past so many years. The Group has got the distinction of being awarded the ISO 9001 certification in Rajasthan in construction sector. The Group is headed by Shri RAVI MATHUR, a Civil Engineer having a 25 yrs. Experience as Builder & Promoter and Shri ANUJ MATHUR, an Architect from School of Planning & Architecture 1991 New Delhi batch, and having designed several prestigious projects in Delhi & Jaipur.

The Group has interests in Hotel Industry as well and till date has completed several independent Houses & Bungalows and Apartment Complexes for hundreds of satisfied customers.

Our company has pioneered the concept of multistory Apartment Complex-living in Jaipur by constructing probably the first apartment complex in Jaipur. The company has since then completed many projects in Jaipur, constructing maximum number of projects by any Builder & Promoter Group. The Group is working on several projects simultaneously and many other projects are in pipeline.

The Group has got an in house team of experienced Architects, Designers and Engineers with all necessary Construction machinery. There is permanent staff trained to design big projects. The Group has built a reputation & brand name for quality, style, high professional standards and reliability over a period of time amongst the Buyers of Property in Jaipur City.

The Group is financially sound and capable of arranging resources for bigger magnitudes of projects.

SDC
GANESH KRIPA
Premium Residential Apartments

living in a
serene environment
is now your
dream come true !



All the comforts you'd expect.

The advantages just keep adding up at SDC Ganesh Kripa. Modern conveniences are aplenty - state-of-the-art security, modern elevators, elegant entrance foyer and backup power for common usage areas. A whole new way of living awaits you at SDC Ganesh Kripa Bapu Nagar Jaipur. The time is just right for you to give your lifestyle the exclusive address it deserves.





redefining the lifestyle for elites

Space that
spells style

Every corner a joy,
every nook a celebration

"Design reigns supreme at SDC Ganesh Kripa". It's the sensitivity to the requirements of demanding clients that finds a true expression here. The well lit interiors, spacious sit-outs set the mood for many a lively moments. Provision for modular kitchen, spacious bed rooms and inviting family areas set a welcoming tone. All bed rooms with provision for air conditioners to keep you in cool comfort.



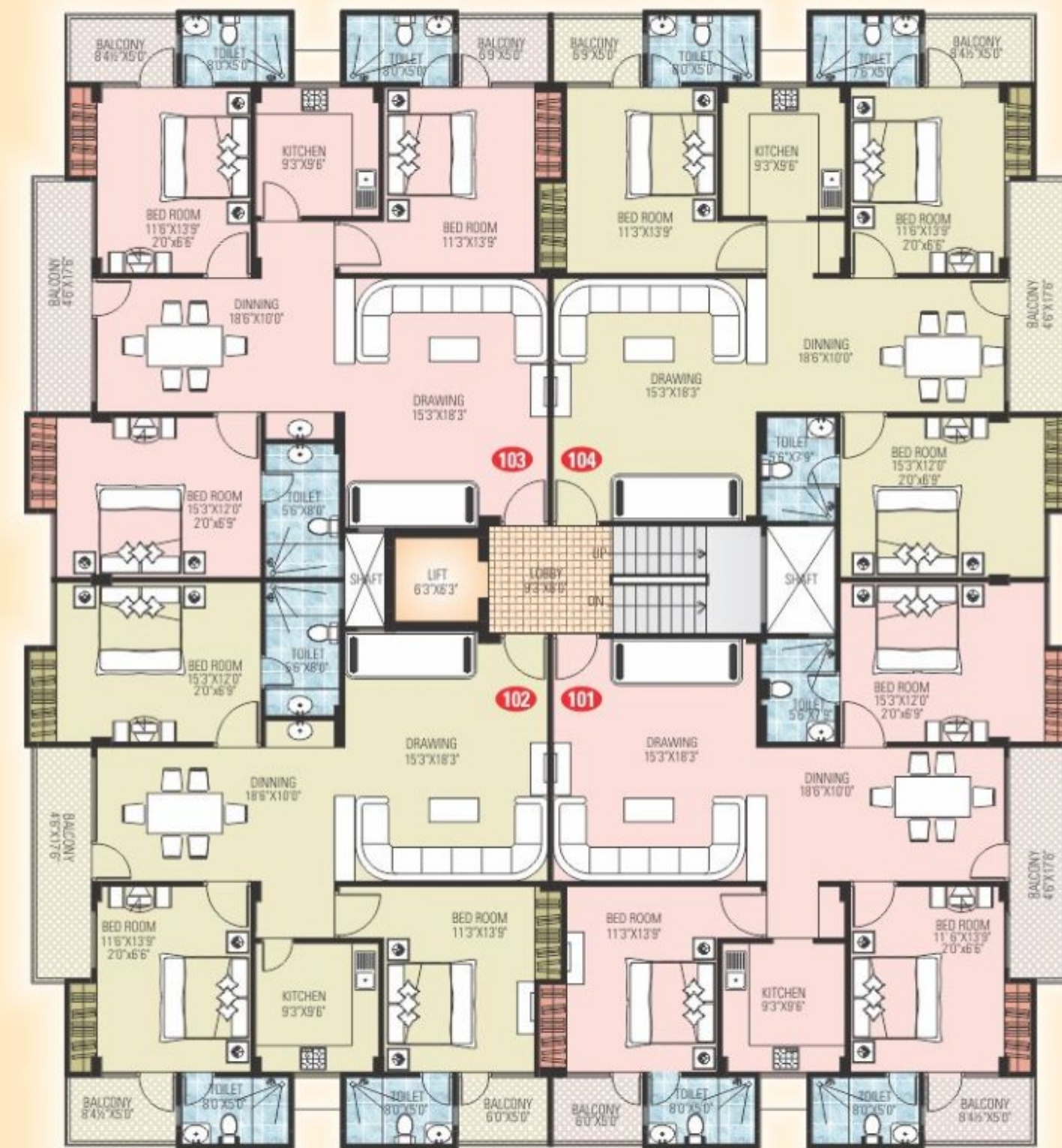


SDC
GANESH KRIPA
Premium Residential Apartments





GROUND
Floor Plan



TYPICAL
Floor Plan
1st, 2nd, 3rd & 4th
FLOOR PLAN

Fiat No.	Sale Area
101	2000 Sq.ft.
102	2020 Sq.ft.
103	2020 Sq.ft.
104	2000 Sq.ft.





Salient Features

Apartment Features

- Granite, Wooden Flooring in Drawing and Dining area
- Premium Class flooring of Vitrified Tiles/Marble
- POP finish on wall & ceiling with cornices
- Acrylic Plastic paint on wall & ceiling
- Polish/Paint on doors & windows

Wood Work

- Windows having Glass panels/wire mesh panels with safety grills
- Tough ISI mark 30 mm flush doors
- Well designed main door of 30 mm thickness
- Brass fitting of good quality on doors & windows
- Wooden wardrobe with shutters in each bedroom

Kitchen

- Black Granite working counters, SS sink
- 7" tiles dado above the counter
- Modular Kitchen
- Concealed Copper tubing for Gas line to nearest balcony
- Separate Washing Area

Toilet

- Designer Spanish tile in toilet
- Premium CP Fitting of Grabtree/Marc Continental Range
- Ceramic tiles in toilet upto 7' height on walls
- Anti-skid ceramic tiles on flooring
- Counter wash basin in master Bedroom toilet
- Jet in all Toilets
- CP Accessories in Toilets of premium brand

Security System

- Closed Circuit TV (in Entrance lobby/Parking area)
- Well managed Security Service
- Intercom

Electrical

- Modern electrical system with concealed Copper Wiring
- Premium quality Switches & Accessories
- TV/Telephone/AC/Cooler point in all the rooms at appropriate places
- Power backup (Silent DG Set) for common service
- Fan Exhaust & Tubelite provided
- Decorative light in Drawing & Dining

General Features

- Well designed Entrance layer & Lobby area
- Earthquake resistant framed structure design as per Seismic zone-II
- Appropriate fire fighting arrangements
- 1 Lift for fast & easy commuting
- Decorative wash basin in dining area
- 24 hour water supply through own tubewell
- Rain water harvesting system



Few of our Prestigious Projects



Metropolis, Jaisinghpura, Ajmer Road



Karan Height, Lal Kothi



Rukmani Garden, Shiv Marg, Banipark



B-83, Golden Jewel, Bapu Nagar



Basant Kunj, Rajendra Marg, Bapu Nagar



Greenpark, Janta Colony



Golden Palm, B-69, Tilak Nagar



Monarch, Hanuman Nagar, Vaishali Nagar



Residential at Kushal Nagar



Vivay, Manji Colony, Malviya Nagar



Pride, Near Ganga Jamuna Petrol Pump



Commercial at Sahkar Marg



location