



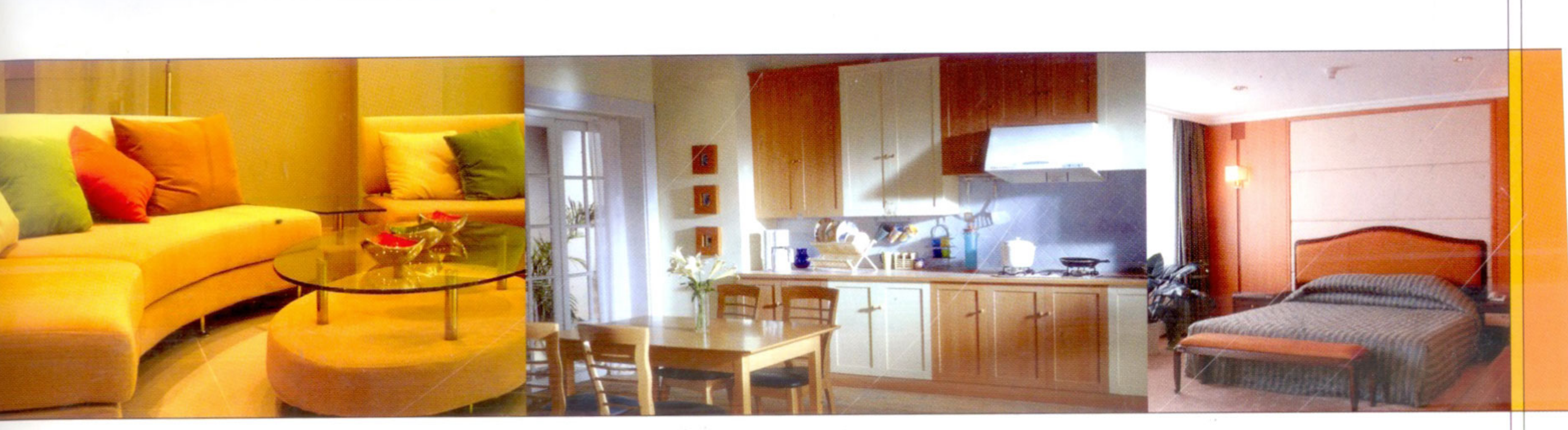
*"A comfortable house is a great source of happiness"*

DSR Constructions is one of the leading real estate developers, engaged in the construction of Residential Apartments, Town houses and Commercial Premises in Bangalore and Established in 1988, the company today has to its credit several prestigious projects, with one of the leading Builders in these cities.

State-of-art amenities, high-end specifications, unmatched construction quality, prime locations, uncompromising delivery schedules and competitive prices are just a few things we can boast of.

**DSR fairmont**

is a project of 24 deluxe apartments located on the Outer Ring Road, Sarjapur road and Marathahalli Road, very close to the Sarjapur road junction. It is right

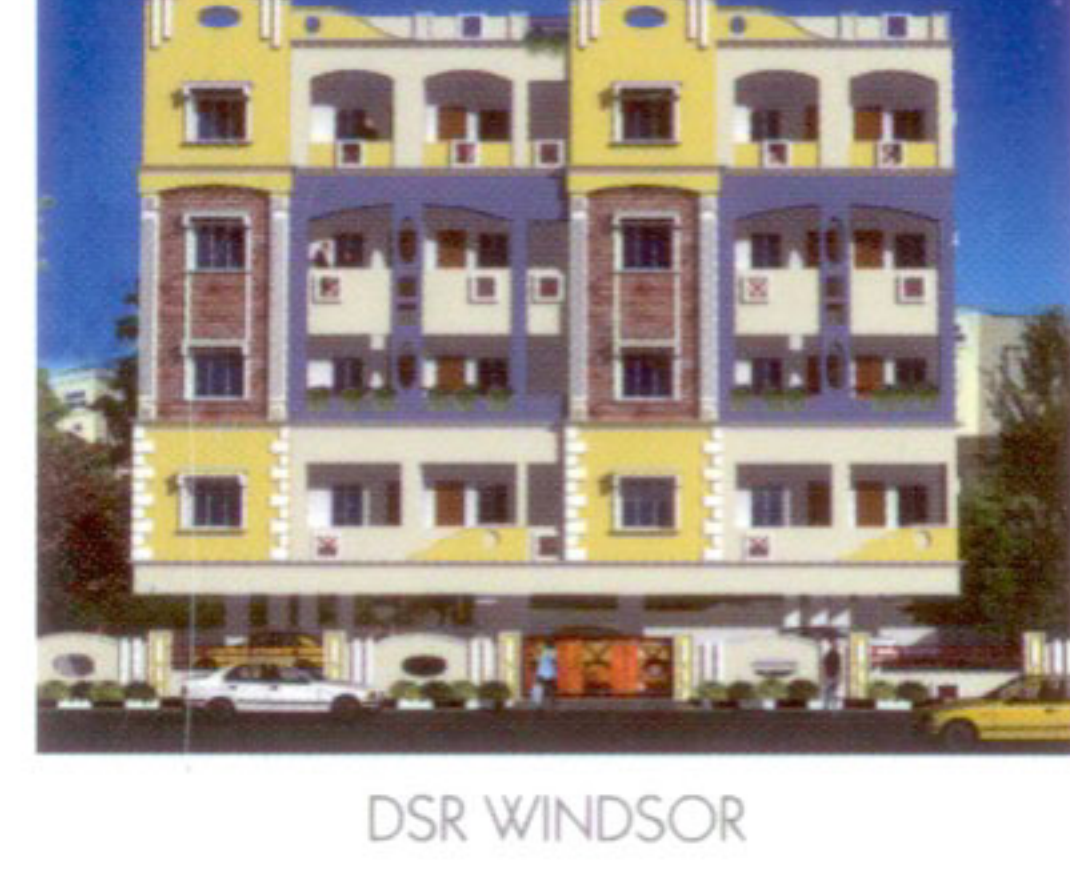
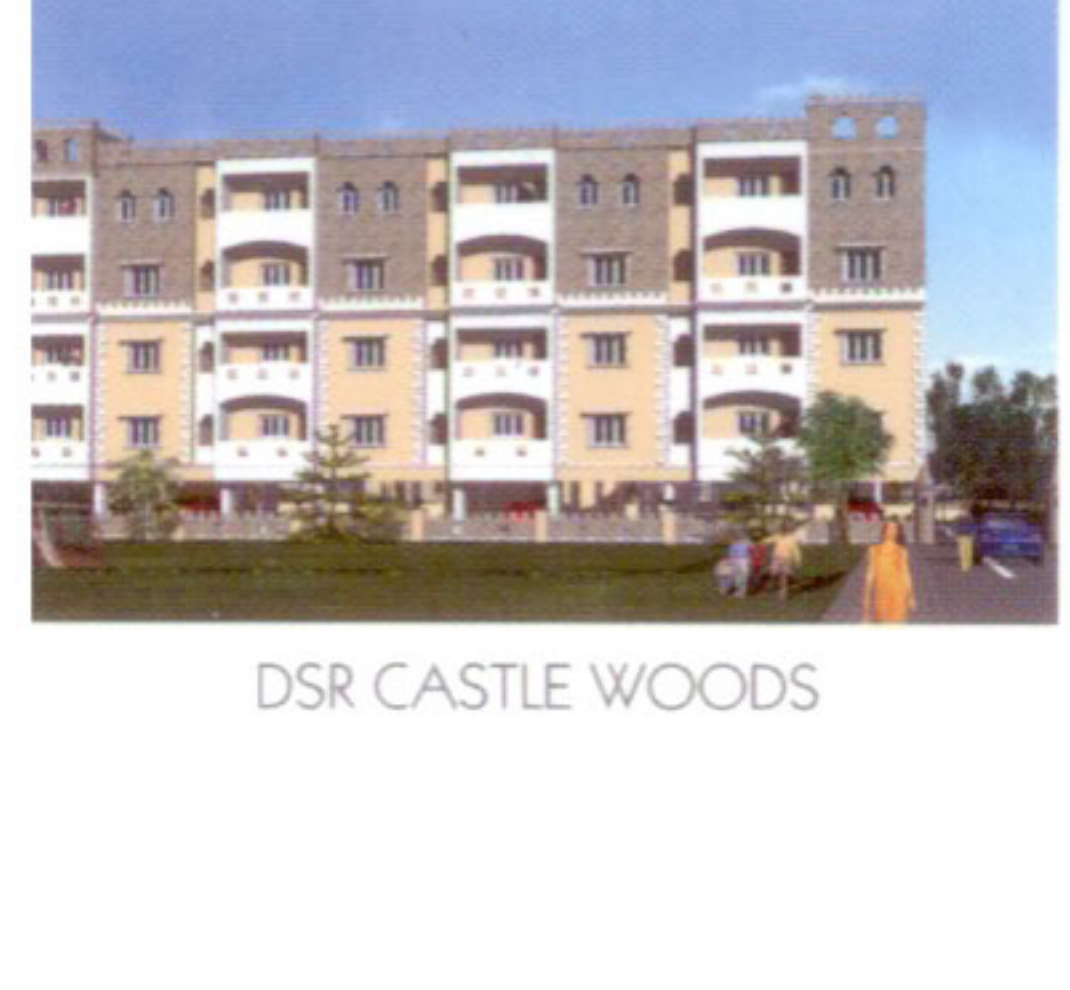
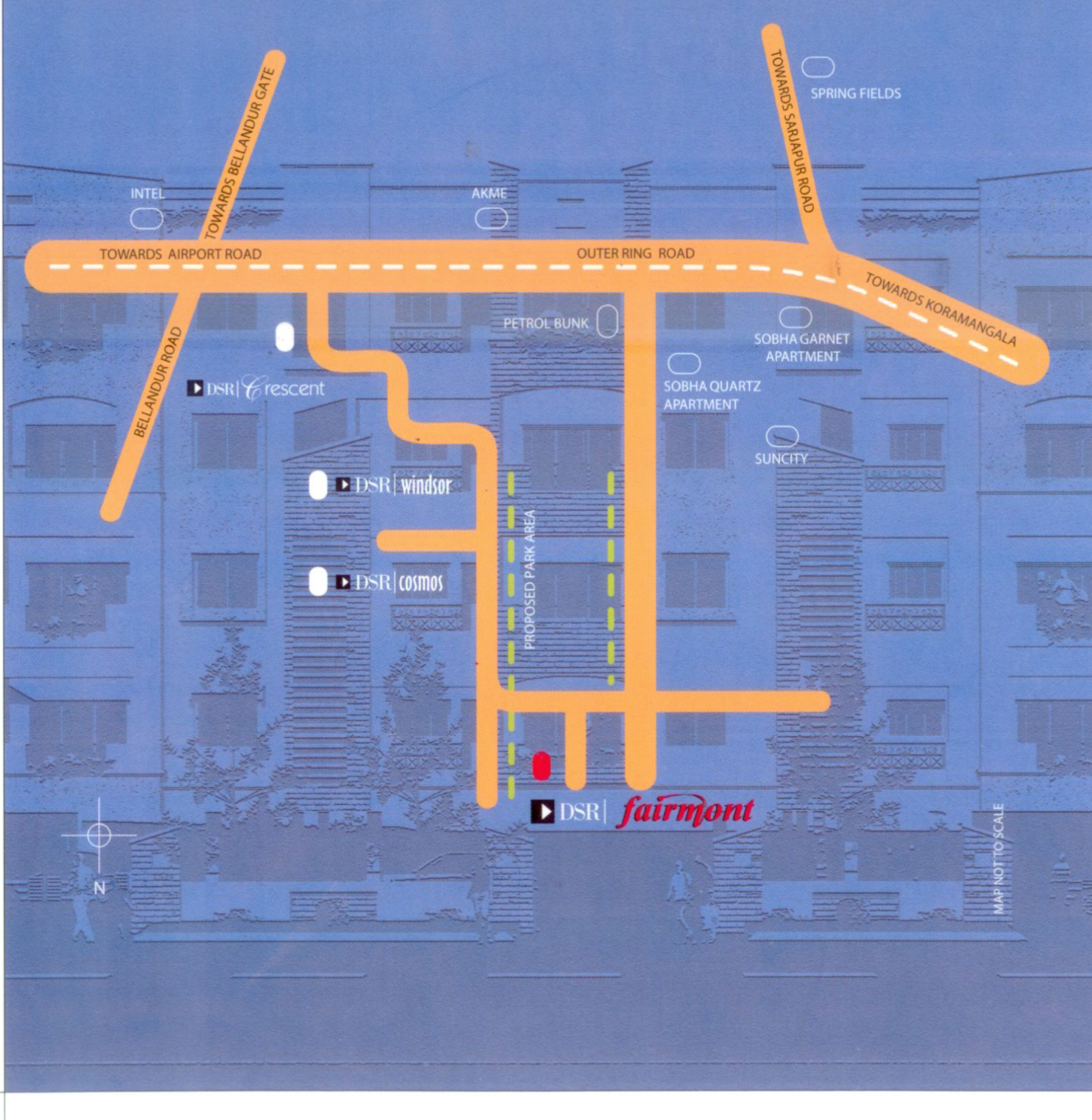


- STRUCTURE**  
Long lasting & Strong R.C.C framed structure with solid / hollow block masonry
- PLASTERING**  
All internal walls are smoothly plastered with lime rendering and putty finished, Ceiling cornices in living and dining room
- PAINTING**  
Interior: Putty finished with oil-bound distemper paint  
Exterior: Emulsion paint
- FLOORING**  
■ 20" X 20" Vitrified tiles for living and dining  
■ 16" X 16" Ceramic tiles for bedrooms, attached balconies and kitchen  
■ 12" X 12" Anti-skid ceramic tiles for all toilets and kitchen utilities
- DOORS & WINDOWS**  
■ Teak wood door frame with threshold for main door  
■ Skin moulded design main door finished with melamine polish from both sides  
■ All other door frames in sal / honne wood  
■ Bedroom and toilet doors shall be water proof flush shutter with enamel paint  
■ Good quality brass hardware with branded ultra lock for main door  
■ Good quality powder coated hardware with cylindrical locks for other doors  
■ Powder coated aluminum sliding windows with 4mm glass and safety grill
- TOILET FITTINGS & ACCESSORIES**  
■ Ceramic glazed tiles dado upto door level  
■ Matching pastel colored sanitaryware of Hindustan or equivalent make  
■ Hot and cold water mixer unit for shower of Jaquar make or equivalent  
■ Health faucet will be provided in western toilets  
■ Provision for geyser in all toilets
- KITCHEN**  
■ Polished black granite kitchen platform with stainless steel sink and sink tap  
■ Water outlet provision for water purifier  
■ 2 feet dado above granite kitchen platform area in pastel shade ceramic glazed tiles  
■ Loft for storage on one side wall  
■ Provision for washing machine in utility area
- ELECTRICAL**  
■ Fire resistant electrical wires of reputed make  
■ Branded elegant modular switches  
■ TV and telephone points in living and Master bedroom  
■ AC point in Master bedroom, geysers points in all bathrooms  
■ Intercom facility from each flat to security room and other flats  
■ For safety, one earth leakage circuit breaker (ELCB) for each flat
- POWER BACK UP**  
■ Accoustically insulated Stand-by generator for lights in common areas, Lifts and Pumps  
500 watts D.G. Power back up for all flats
- LIFT**  
■ Six passengers branded lift

## specifications

### highlights

- No common walls
- Convenient EPABX FACILITY
- Multipurpose hall
- Power back up
- Tot lot
- Servants toilet



It gives us great pride and satisfaction to welcome you to a few of our illustrious projects. You will find the location, the amenities, the design everything about them, totally satisfying.