



PARAMOUNT

GUIDED BY TOMORROW

 **golfforesté**



TYPE - A

G+2
villa: 157.4 sq. yd.
total saleable
area = 3008 sq.ft.
4 bedroom + servant + utility terrace
(split house based layout)



ground floor plan

21' 1/2"

46' 0"

living room 12' x 14'

kitchen 10' x 12'

bathroom 5' x 7'

bedroom 10' x 12'

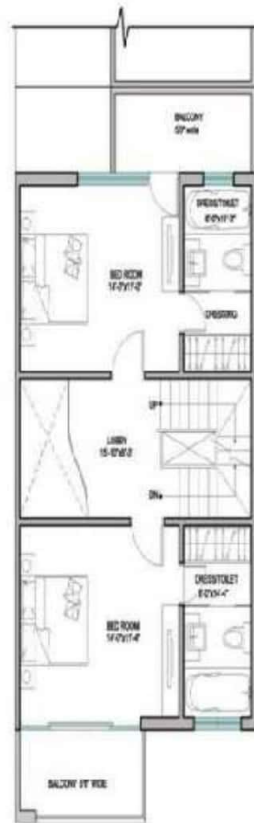
entrance 10' x 12'

parking 10' x 12'

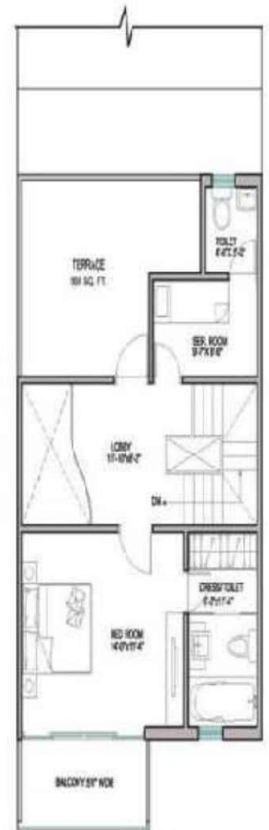
car

100

first floor plan



second floor plan



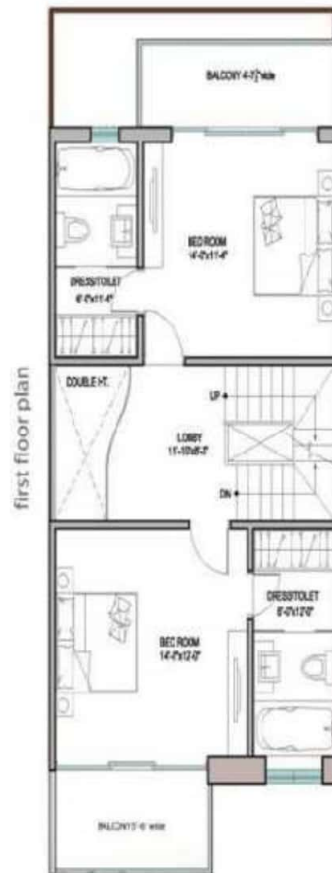
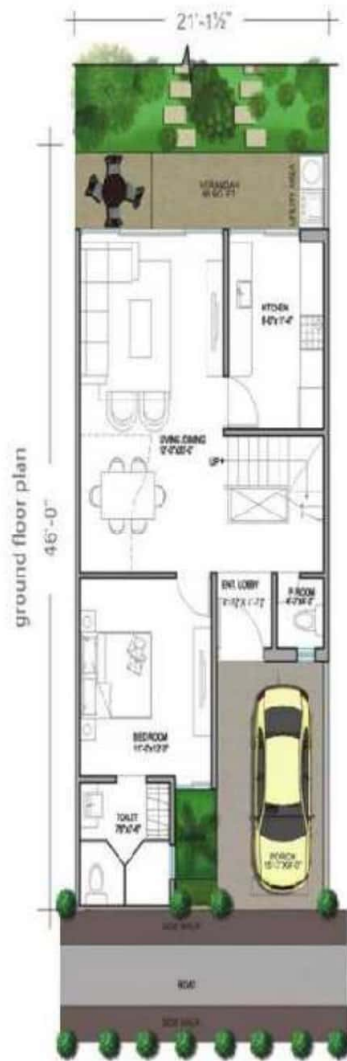


TYPE - B

G+2 villa: 108.0 sq.yd. • total saleable area = 2220 sq.ft.
3 bedroom + servant + 1 bedroom (expandable) (back to back)

G+2
villa: 108.0 sq.yd.
(rear side golf/forest)
total saleable
area = 2485 sq.ft.
4 bedroom + servant
(golf/linear forest facing)

G+2
villa: 108.0 sq.yd.
(rear side golf/forest)
total saleable
area = 2485 sq.ft.
4 bedroom + servant
(golf/linear forest facing)



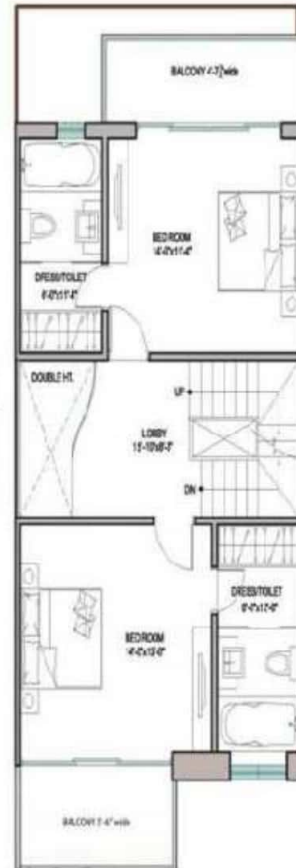


TYPE - C

G+2
villa: 108.0 sq.yd.
(rear side golf/forest)
total saleable
area = 2185 sq.ft.
3 bedroom + servant
(golf/linear foreste facing)



first floor plan



second floor plan

