

FUTURE WILL BE
BEAUTIFUL,
WHEN THE PAST
INSPIRES
THE PRESENT.

IT'S TIME TO THINK.



thoughttrains



ONCE UPON A TIME...
**THERE WERE
STORIES
ABOUT TREES
& BIRDS**

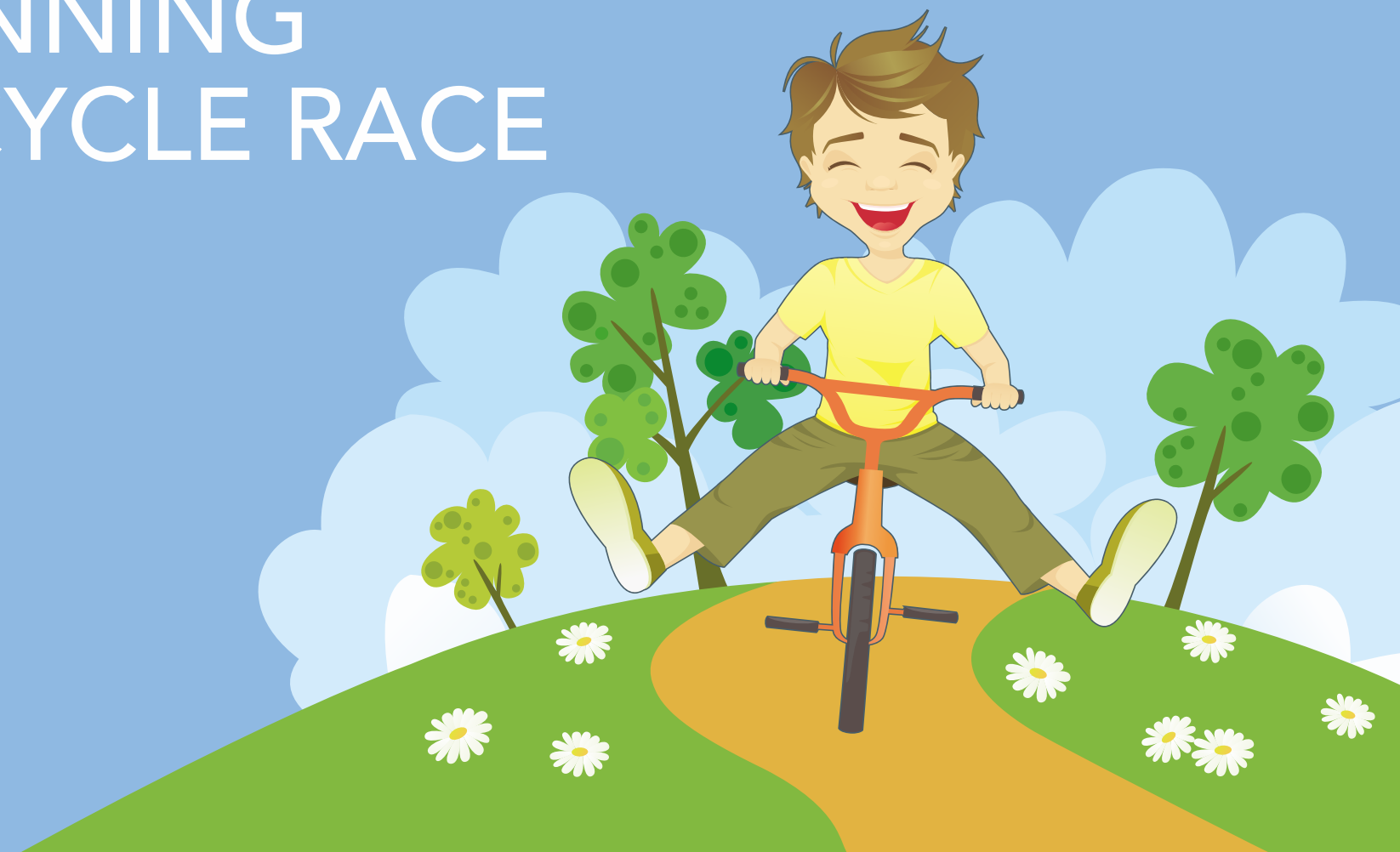


IT'S TIME TO BRING BACK THOSE STORIES...



ONCE UPON A TIME...

THERE WAS
A CHILD WHO
DREAMT OF
WINNING
A CYCLE RACE



IT'S TIME TO BRING BACK THOSE VICTORIES...



ONCE UPON A TIME...

THERE WAS
THE GRANDMA
WHO PLUCKED
FRESH
TOMATOES



IT'S TIME TO BRING BACK THAT FRESHNESS...



ONCE UPON A TIME...
THERE WAS
A BOY WHO
CHASED
BUTTERFLIES



IT'S TIME TO BRING BACK THAT EXCITEMENT...



ONCE UPON A TIME...
THERE WERE
GARDENS
THAT WERE
THE GYM



IT'S TIME TO BRING BACK THAT JOY...



ONCE UPON A TIME...
THERE WERE
MISCHIEVOUS
MANGO EATING
ADVENTURES



IT'S TIME TO BRING BACK THOSE ADVENTURES...





PRESENTING

 **arkade earth**
return to roots
Kanjurmarg (E)

1, 2 & 3 BHK NATURE-RESIDENCES



RUN



JOG



CHASE



HIDE 'N' SEEK

4 ACRES OF HAVEN BUILT ON EARTH, LIKE EARTH.



BREATHE



RELAX



RELIVE



REJOICE



CHILDREN & INNOCENCE

- Skating Rink
- Tennis Court
- Basketball Court
- Kid's Pool
- Children's Play Area.



SIGHT & SOUND THERAPY

- Fruit bearing trees
- Hammock Garden
- Meditation Deck



BODY. MIND & SOUL

- Swimming Pool
- Jacuzzi
- Gazebo
- Squash Court
- Gymnasium.



PEOPLE & MOMENTS

- Amphitheatre
- Indoor Games Room
- Multipurpose Hall



RAISING A CHILD
IS LIKE TENDING
A GARDEN.
YOU HAVE TO
GIVE IT THE RIGHT
ENVIRONMENT.

CHILDREN & INNOCENCE

ACTIVE ZONES FOR HEALTHY GROWTH YEARS

- Skating Rink
- Tennis Court
- Basketball Court
- Kid's Pool
- Children's Play Area





NATURE IS A PAINTER,
SINGER, FARMER
AND A
PHILOSOPHER,
ALL AT THE
SAME TIME.

SIGHT & SOUND THERAPY
LEISURE ZONES FOR THE MUCH NEEDED RELAXATION

- Fruit bearing trees
- Meditation Deck
- Hammock Garden





ROUTINE FOR YOUR BODY, RETREAT FOR THE MIND, A NEW WEALTH OF JOY FOR THE SOUL.



BODY. MIND & SOUL

INDULGENCE ZONES THAT REDEFINE FRESHNESS

- Swimming Pool
- Jacuzzi
- Gazebo
- Squash Court
- Gymnasium.



WHEN YOU MEET,
GREET AND
INTERACT,
YOU EXPRESS,
OPEN-UP &
RECLAIM LIFE.

PEOPLE & MOMENTS

SOCIALISING ZONES FOR ENGAGING CONVERSATIONS

- Amphitheatre
- Indoor Games Room
- Multipurpose Hall





CABANAS AMIDST DESIGNER LANDSCAPE

Artist's Impression



GRAND CLUBHOUSE & AZURE SWIMMING POOL

Artist's Impression



PLAY COURTS & OPEN-AIR AMPHITHEATRE

Artist's Impression



BLISSFUL GREEN SPACES FOR SOLACE

Artist's Impression



LIFESTYLE THAT TOWERS ABOVE LUSH GREENERY

Artist's Impression



AERIAL NIGHT VIEW

Artist's Impression



Kanjurmarg - A destination that is one of the fastest growing suburbs in Mumbai. With serene ambience comes along connectivity of major landmarks & places within 10 mins drive. Overall, it is an ideal address to live at with enormous scope of growth and new standard of living.

Education	Hospitals	Coveniences
<ul style="list-style-type: none">• Podar International School• Hiranandani International School• Bombay Scottish School• IIT Powai• K J Somaiya Campus	<ul style="list-style-type: none">• Fortis Healthcare• Dr. LH Hiranandani Hospital	<ul style="list-style-type: none">• R City Mall• Powai Galleria• D Mart• Haiko Mall

- Podar International School
- Hiranandani International School
- Bombay Scottish School
- IIT Powai
- K J Somaiya Campus

- Podar International School
- Hiranandani International School
- Bombay Scottish School
- IIT Powai
- K J Somaiya Campus

- Fortis Healthcare
- Dr. LH Hiranandani Hospital

- Fortis Healthcare
- Dr. LH Hiranandani Hospital

- R City Mall
- Powai Galleria
- D Mart
- Haiko Mall

- R City Mall
- Powai Galleria
- D Mart
- Haiko Mall

SITE LAYOUT PLAN & AMENITIES

TOWERS

- A - Aspen
- B - Blue Bell
- C - Carnation
- D - Daffodil
- E - Ebony
- F - Fern
- G - Gardenia
- H - Hazel

LEGENDS

Landscape Amenities

- 01) Urban Plaza
- 02) Drop off Plaza to Towers
- 03) Flag Hoisting Pole
- 04) Lawn
- 05) Adult Swimming Pool
- 06) Kid's Swimming Pool
- 07) Amphitheatre
- 08) Infinity Pool Edge
- 09) Pool Deck
- 10) Garden Lounges
- 11) Open Shower
- 12) Meditation Deck

- 13) Children's Play Area
- 14) Agriculture Field
- 15) Basketball Court
- 16) Tennis Court
- 17) Sparrow Housing Colonies
- 18) Amenity Space
- 19) Clubhouse

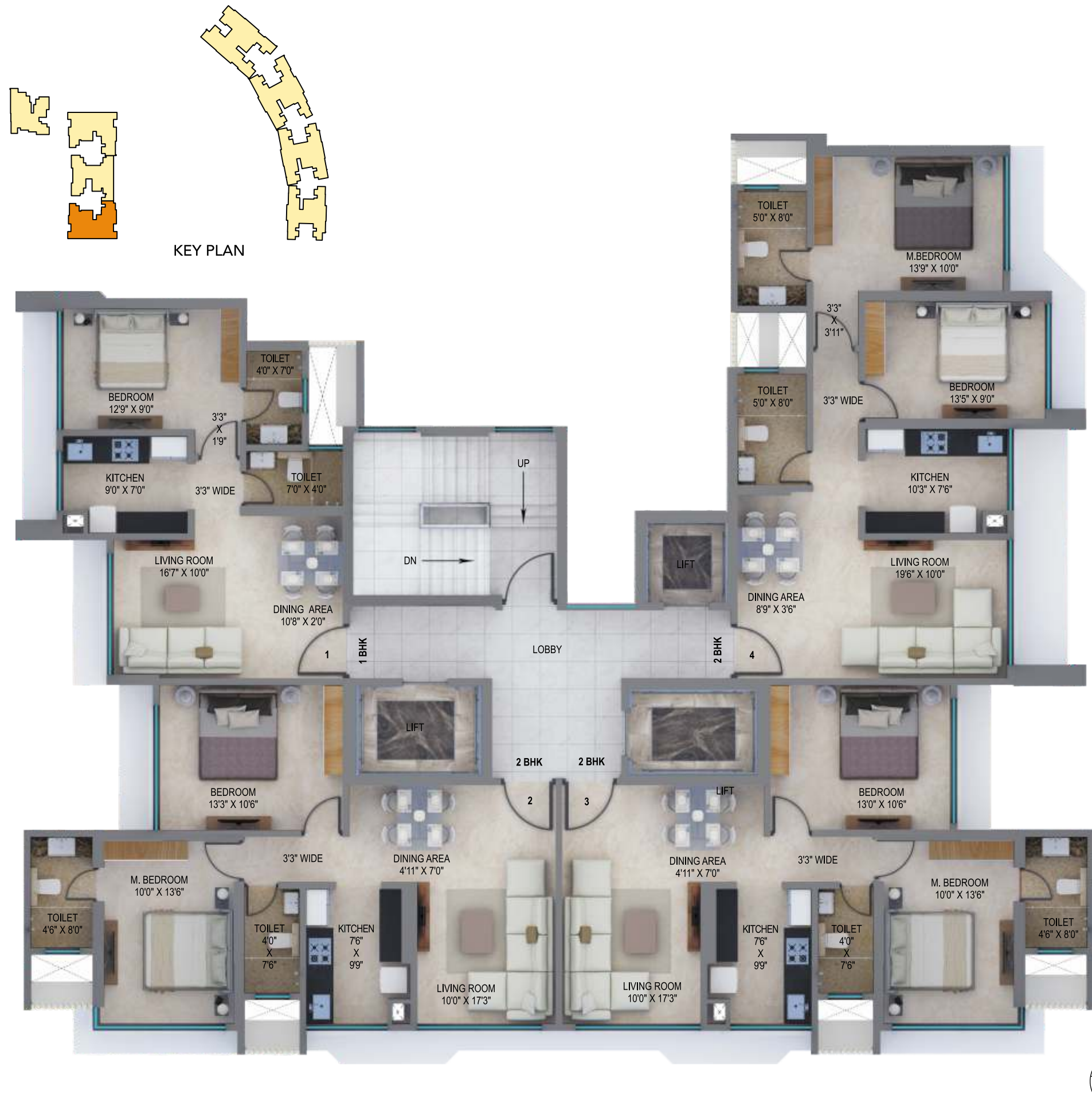
Club Building Amenities

- Gymnasium
- Squash Court
- Multipurpose Hall
- Indoor Games Room
- Skating Rink on Club Terrace

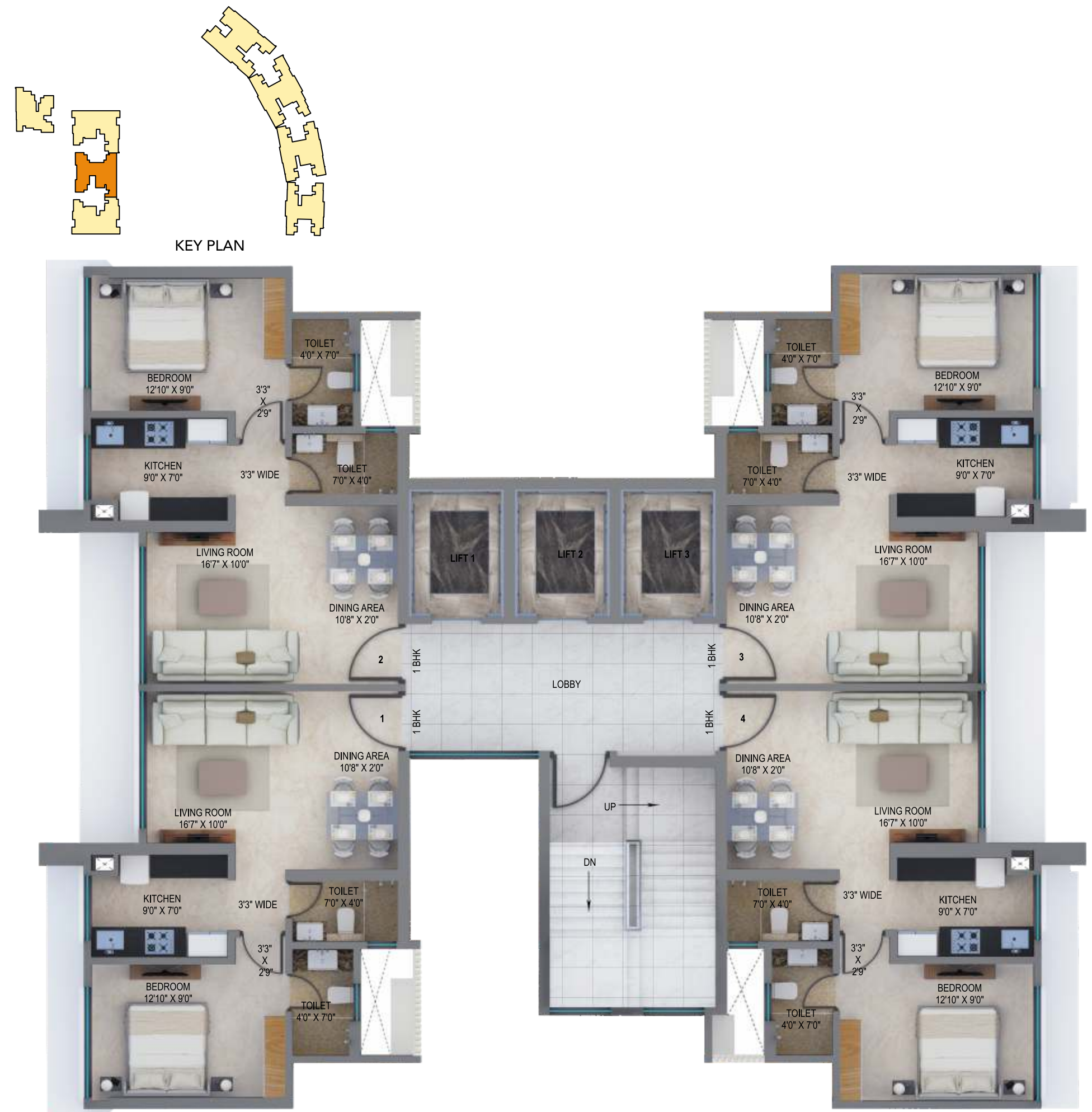


*TO BE DEVELOPED IN PHASE WISE MANNER AS REGISTERED WITH MAHARERA.
 *FOR MORE DETAILS, PLEASE VISIT "maharera.mahaonline.gov.in"

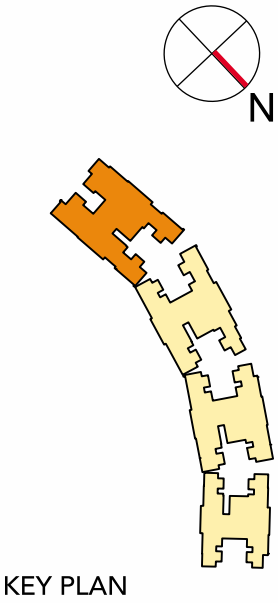
TYPICAL FLOOR PLAN - ASPEN
MahaRERA No.: P51800006579



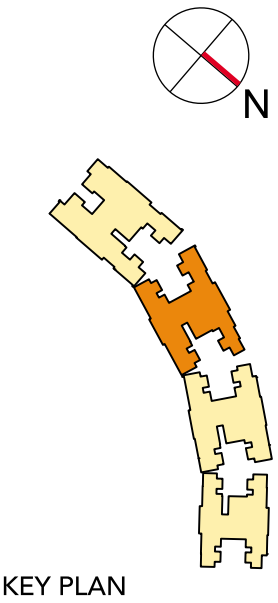
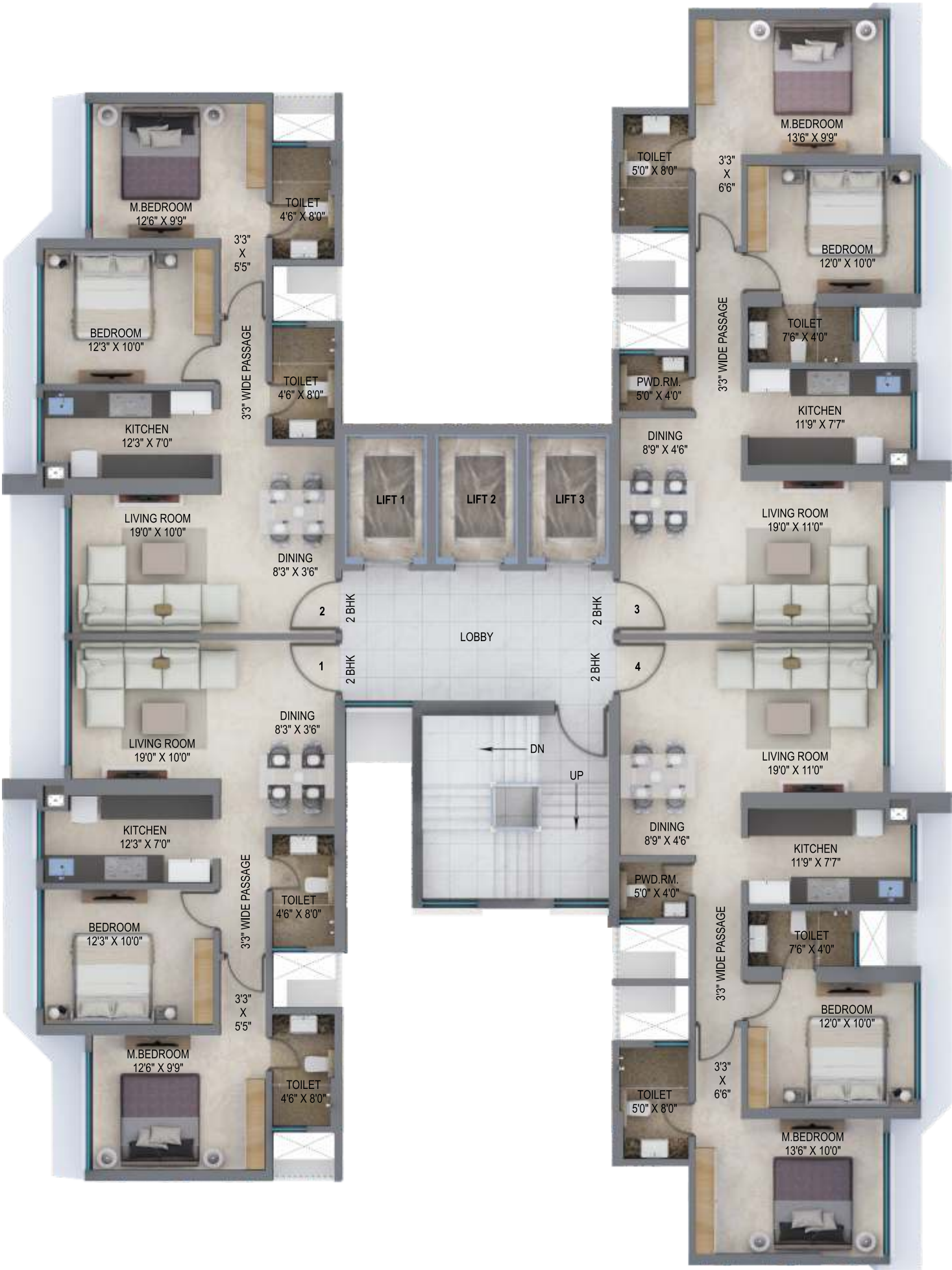
TYPICAL FLOOR PLAN - BLUEBELL



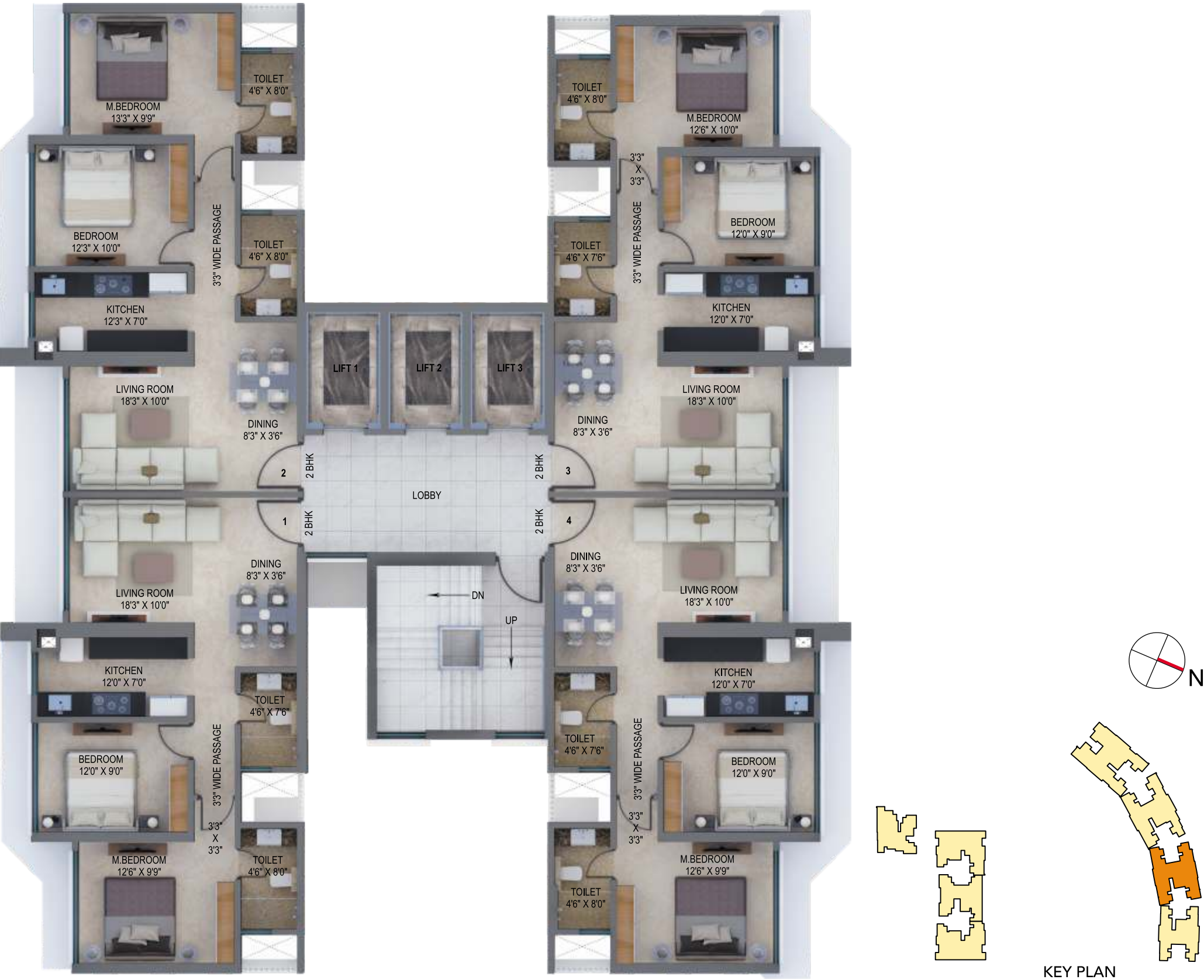
TYPICAL FLOOR PLAN - DAFFODIL
MahaRERA No.: P51800004440



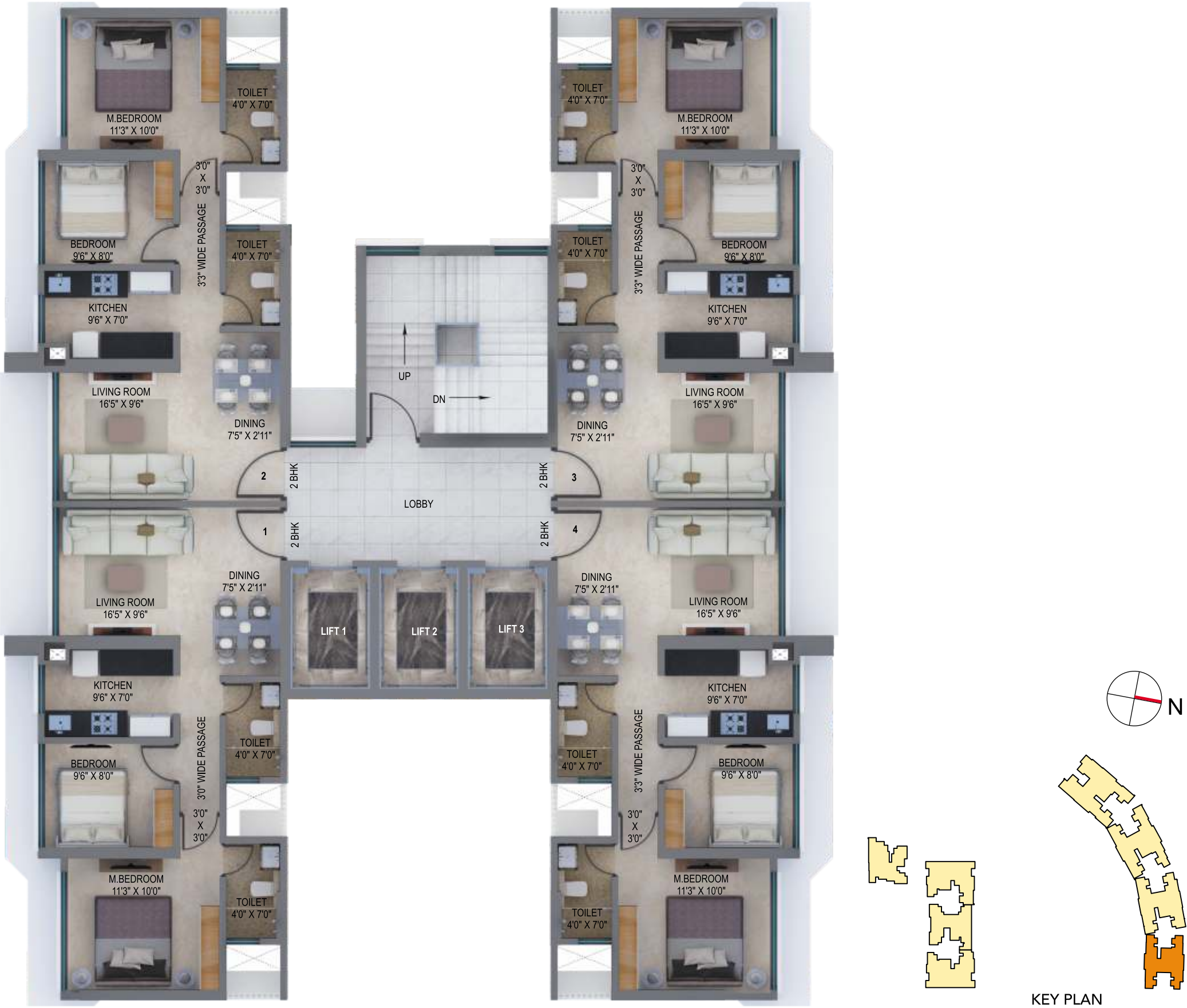
TYPICAL FLOOR PLAN - EBONY
MahaRERA No.: P51800008953

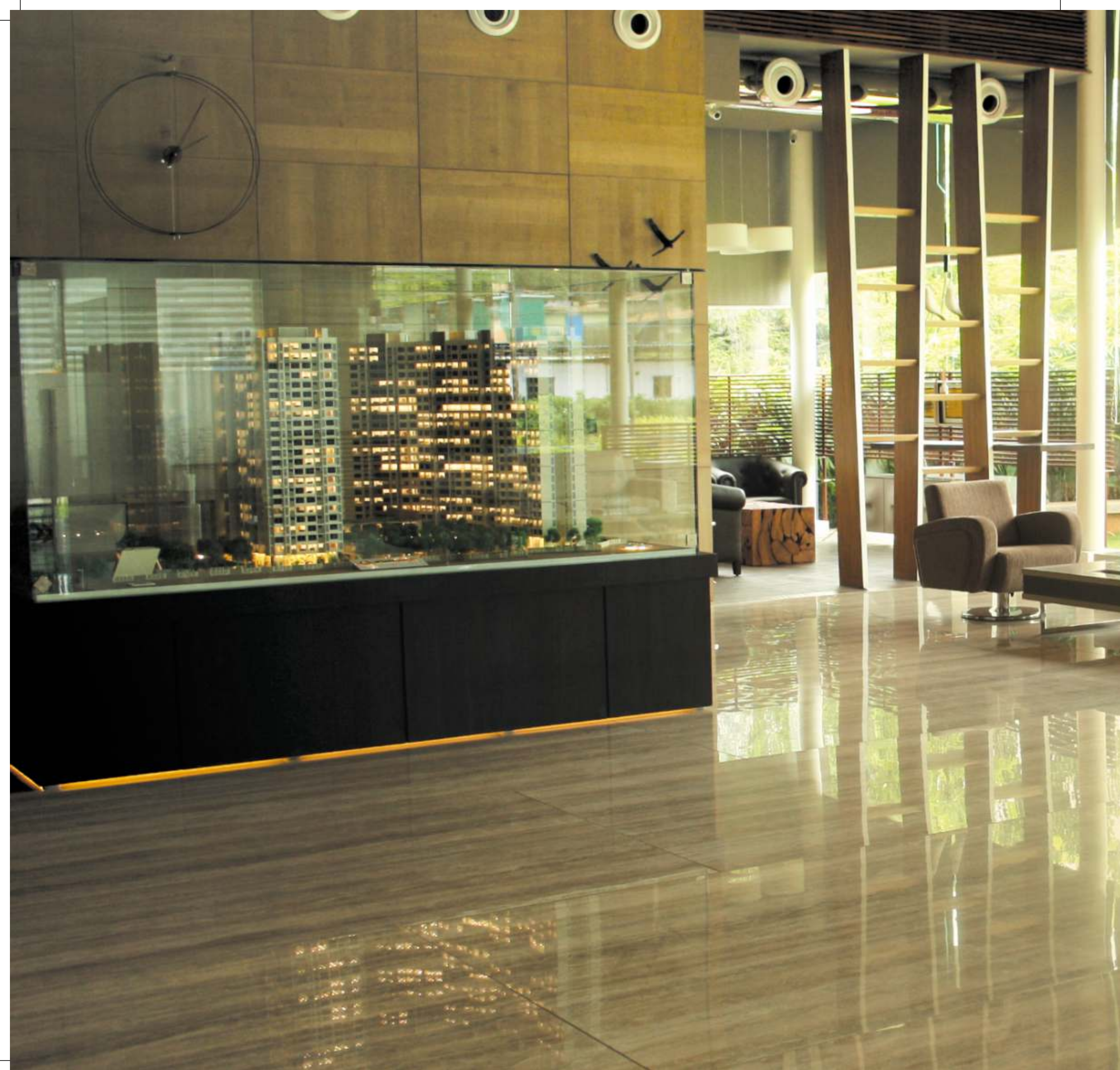


TYPICAL FLOOR PLAN - FERN
MahaRERA No.: P51800004750



TYPICAL FLOOR PLAN - GARDENIA





SHAPING THE PRESENT. WELCOMING THE FUTURE, THAT IS NOW.

When vision goes beyond what we see, it reaches a new world that is yet to take shape. At Arkade, looking at future, we reinvent the present. We build symbols of desires, shapes of dreams that epitomise living. As a progressive enterprise, our each effort goes in finding a value that we are able to transfer to our customers, and transform lives while we are at it. For us, future is not tomorrow, it is now, taking shape in front of us.

MILESTONES & BENCHMARKS

- 3000+ HAPPY FAMILIES
- 2.5 MILLION SQ. FT. DEVELOPED TILL DATE
- 1.5 MILLION SQ. FT. DEVELOPMENT IN PROGRESS

FLAGSHIP COMPLETED PROJECTS



WALLACE FORTUNA,
MAZGAON



JEEVAN SARITA,
VILE PARLE (E)



ARKADE ADORNIA,
GOREGAON (E)

ICONIC ONGOING PROJECTS



ARKADE RISE,
CARMICHAEL ROAD



ARKADE ART,
MIRA ROAD (E)



ACROPOLIS,
VIRAR (E)

