



An initiative of  
  
infinity

For further details :

Vrindavan :  
Krishna Bhumi  
Bhakti Vedanta  
Swami Marg  
(Chhatikara Road),  
Vrindavan - 281121  
Uttar Pradesh

Agra :  
Krishna Bhumi,  
Block C-21,  
B 9 & 10,  
Opposite Nuova Hotel,  
Sanjay Place,  
Agra - 282002

Delhi :  
Krishna Bhumi,  
N-58,  
Panchsheel Park,  
New Delhi -  
110017

Kolkata :  
Snowwhite  
Infrastructure Pvt Ltd  
Infinity Tower II,  
16th Floor,  
Sector V, Salt Lake,  
Kolkata - 700091

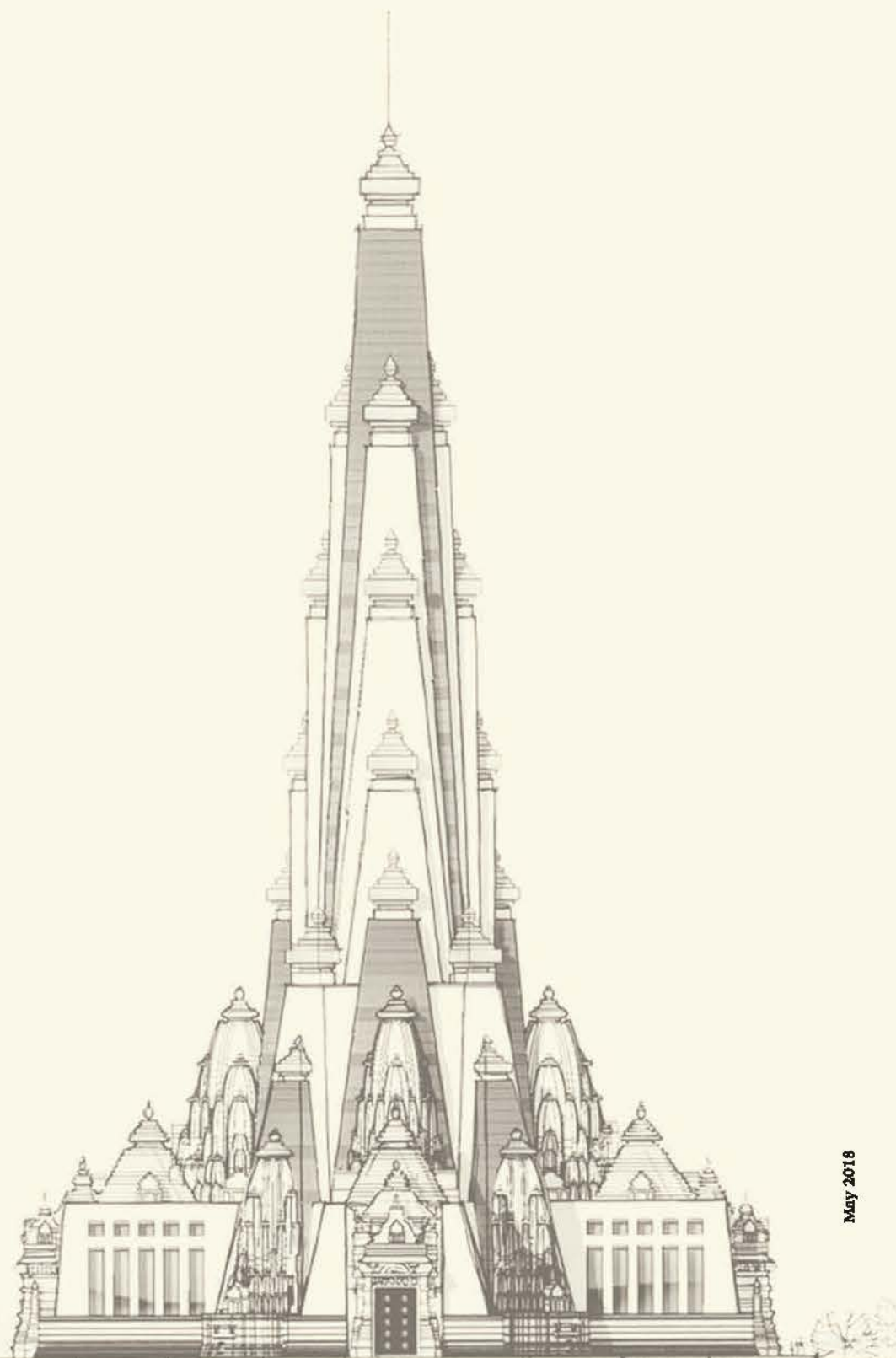
Co-ordinates :

+91 9696968899 | [www.krishnabhumi.in](http://www.krishnabhumi.in) | [info@krishnabhumi.in](mailto:info@krishnabhumi.in)

Follow us on:   

**Disclaimer:** The contents of this material are conceptual and may / may not form part of the final product. We reserve the right to change and modify the contents without prior notice and shall not be liable to anyone for the changes / improvements made.

The Vrindavan Chandrodaya Mandir is a proposed development by the devotees of ISKCON, Bangalore and residential project adjacent to the temple is being developed by Snowwhite Infrastructure Pvt. Ltd.



May 2018

  
Live  
blessed!



Vrindavan the name that instantly evokes the image of Lord Krishna. Situated south east of Delhi in the Mathura district of Uttar Pradesh in north India. Vrindavan is widely acknowledged as the place of Krishna's childhood. It is one of the most frequented holy towns in the Indian sub continent.

*Srimad-Bhagavatam* describes the extraordinary pastimes Krishna performed in Vrindavan during his childhood. The *Bhagavad Gita* explains that Vrindavan on earth is a replica of Krishna's everlasting presence in the spiritual world. And the *Brahma-samhita* says Krishna is eternally living in Vrindavan.



## Welcome to Vrindavan

The fabled land of  
Lord Krishna's childhood



## Significance of Vrindavan and Mathura

Five thousand years ago, the Supreme Lord Sri Krishna advented on this earth and spoke His immortal words, the Bhagavad-Gita.

**मन मना भव मद-भक्तो मद-याजी माम नमस्कारु।**  
*man-mana bhava mad-bhakto mad-yaji mam namaskuru*  
*mam evaisyasi satyam te pratijane priyo `si me*  
Always think of Me, become My devotee, worship Me and offer  
your

homage unto Me. Thus you will come to Me without fail. I promise  
you this because you are My very dear friend.

In 1486, Sri Chaitanya Mahaprabhu advented on this earth to  
exemplify and broadcast the Bhagvad Gita that Lord Krishna had  
spoken .

Sri Chaitanya said:

**अराध्यो भगवान् व्रजत-तन्यास तद्-धामा वृन्दावननम्।**  
*aradhyo bhagavan vraject-tanayas tad-dhama vrndavanam*  
Lord Sri Krishna, son of Maharaja Nanda, is the most worshippingable  
Lord. So also is His holy dhama, Sri Vrindavan.

Sri Chaitanya also said:

**रम्या कासिद उपासना व्रजवधु-वररगेना या कल्पिता।**  
*ramya kacid upasana vrajavadhu-varargena ya kalpita*  
The concept of worship practiced by the gopis of Vrindavan are  
the most attractive and sweet.



*Live blessed*

# Wonderful Vrindavan and Mathura

Some of the most regarded temples in the region



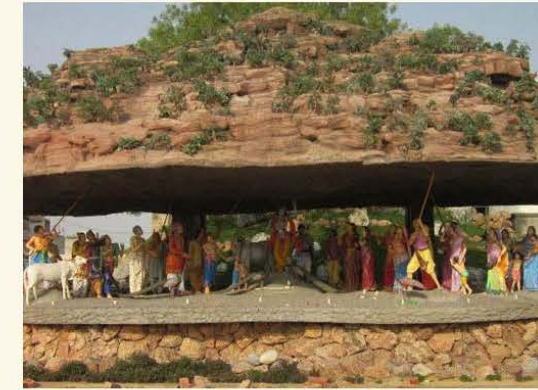
Sri Madan Mohan Temple



Rangaji Temple



ISKCON Temple



Govardhan



Sri Banke Bihari Ji Temple



Govind Dev Temple



Sri Radha Raman Ji



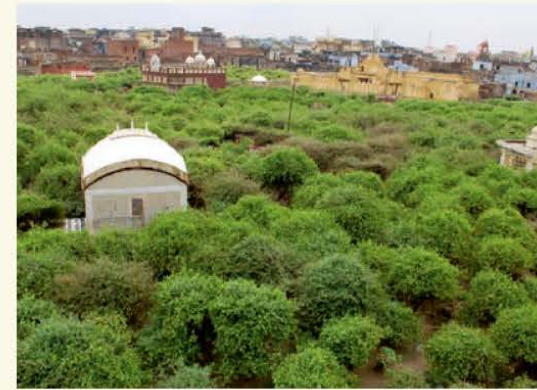
Radha Rani Mandir - Barsana



Prem Mandir



Kesi Ghat



Nidhivan



Krishna Janma Bumi



Dwarkadhish Temple



Vishram Ghat Mathura



Kusum Sarowar



Jatipura Temple Mathura



Live blessed

# Celebrations in Vrindavan and Mathura

Life is a perpetual celebration in Brajbhumi



Holi



Krishna Janmashtami



Radha Ashtami



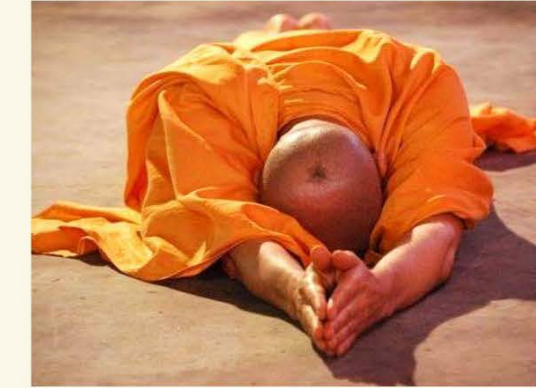
Brahmotsava Festival



Goverdhan Puja



Bhai Duj (Yum Dwitiya)



Guru Purnima



Rang Ji Rath Yatra



Basanta Panchami



Akshay Tritiya



Hariyalli Teej



Chnuri Manorath



Sharad Purnima



Kartik Purnima



Gopashtami



Bihar Panchami



A skyscraper temple of Lord Sri Krishna

Project conceived by devotees of :



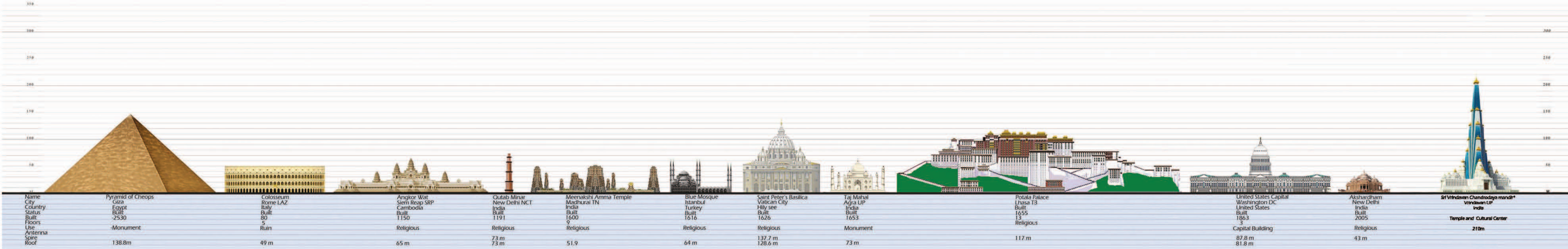
## Proposed Vrindavan Chandrodaya Mandir



At a height of 700 feet, Vrindavan Chandrodaya Mandir will be the tallest Krishna Temple in the world, harmoniously blending the timeless grace of traditional temple architecture and modern elegance.

Disclaimer: The Vrindavan Chandrodaya Mandir is a proposed development by the devotees of ISKCON, Bangalore.

# Comparative graph with some Global Iconic Structures



Disclaimer: The Vrindavan Chandrodaya Mandir is a proposed development by the devotees of ISKCON, Bangalore.



The Grand Temple Hall : Sri Radha Vrindavan Chandra Mandir



Sri Chaitanya Mahaprabhu Mandir



Srila Prabhupada Mandir

Disclaimer: All images are conceptual renditions of the proposed Vrindavan Chandrodaya Mandir by the devotees of ISKCON, Bangalore.





## River, Forest and Temple

A meandering and gurgling Yamuna creek punctuated with lotus filled ponds that will transport each one to the world and times of Sri Krishna.

Disclaimer: All images are conceptual renditions of the proposed Vrindavan Chandrodaya Mandir by the devotees of ISKCON, Bangalore.



## Indoor Krishna Lila Park



*Introducing*



An opportunity to reside in a grand township  
that not only offers world-class living spaces,  
but is also immersed in love and devotion to Lord Krishna.

Right at the feet of proposed Vrindavan Chandrodaya Mandir,  
the world's tallest upcoming Krishna temple\*

\*Disclaimer: The Vrindavan Chandrodaya Mandir is a proposed development by the devotees of ISKCON, Bangalore  
and residential project adjacent to the temple is being developed by Snowwhite Infrastructure Pvt. Ltd.

Aesthetically planned, with every apartment overlooking lush greens, an apartment at Krishna Bhumi is much more than just four walls. The entire initiative stems from the idea of creating the possibility of existing in a state of perpetual union with Lord Krishna.



Disclaimer: All images are conceptual renditions of the proposed and existing development in and around the project.

## Location

On Bhaktivedanta Swami Marg (Chhatikara Road), in the heart of Vrindavan

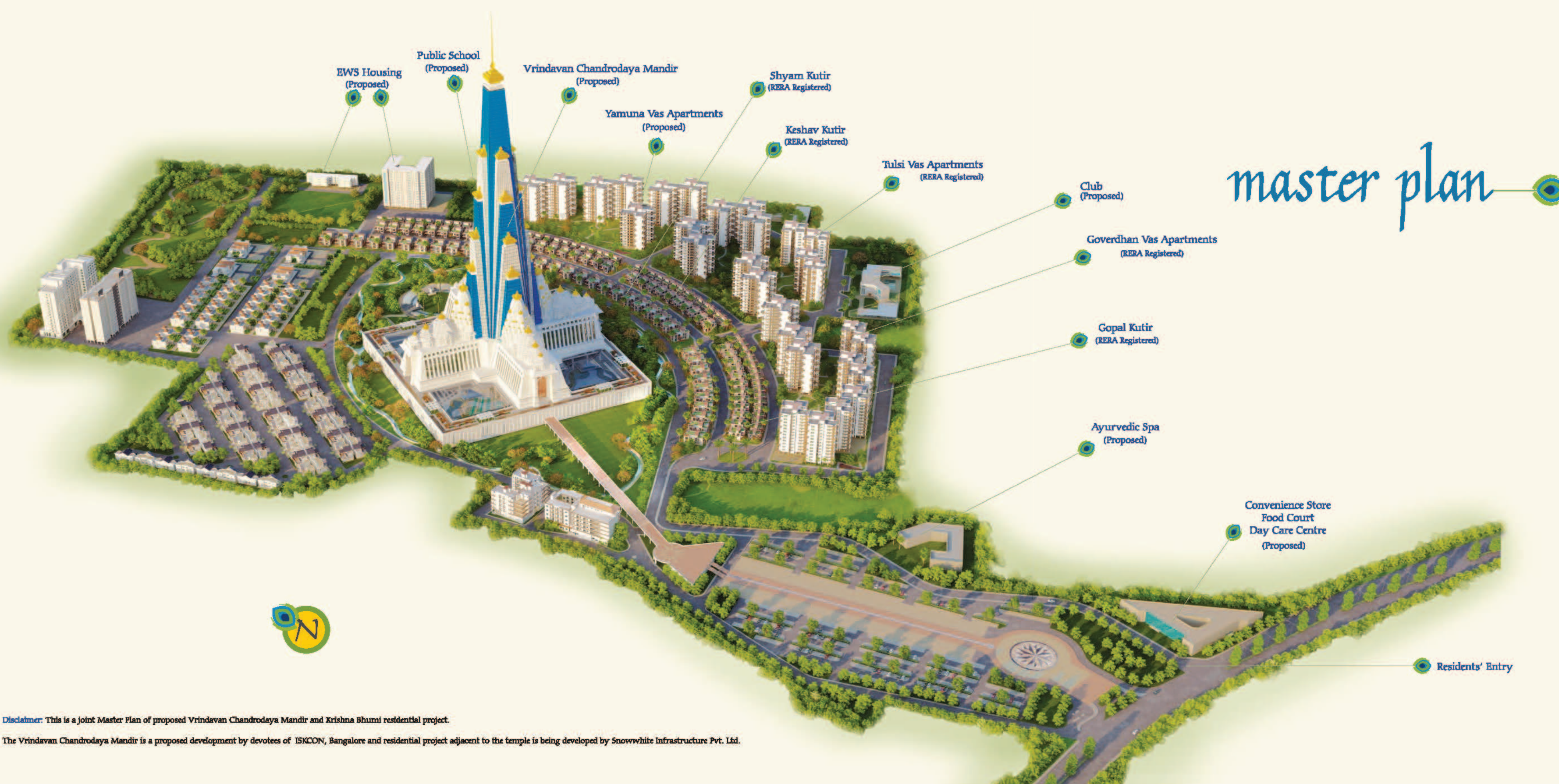
### Nearby Destination

- Maa Vaishno Devi Dham: 1 km
- Prem Mandir: 2 km
- ISKCON Temple: 2.5 km
- Bankey Bihari Temple: 4.5 km
- Radha Ballabh Mandir: 4.5 km
- Nidhivan: 4.5 km
- Gopinath Temple: 4.5 km
- Madan Mohan Temple: 4.5 km
- Holy Yamuna River: 4.5 km
- Rangnath Temple: 5.5 km
- Govardhan: 22 km

### Connectivity

- NH2 (Delhi-Agra): 2 km
- Vrindavan Rly. Stn.: 3 km
- Yamuna Expressway: 12 km
- Mathura City: 10 km
- Mathura Rly. Stn.: 11 km
- Delhi Airport: 160 km





# master plan



at the feet of  
Vrindavan Chandrodaya Mandir

## apartments & villas

RERA Registration Numbers:  
 Krishna Bhumi - Govardhan Vas: UPRERAPRJ5812  
 Krishna Bhumi - Villas: UPRERAPRJ6039  
[www.up-rera.in](http://www.up-rera.in)

Disclaimer: This is a joint Master Plan of proposed Vrindavan Chandrodaya Mandir and Krishna Bhumi residential project.

The Vrindavan Chandrodaya Mandir is a proposed development by devotees of ISKCON, Bangalore and residential project adjacent to the temple is being developed by Snowwhite Infrastructure Pvt. Ltd.

# villas

Villas come in a range of 3-5 BHK,  
to suit different needs & sizes.

RERA Registration Numbers:  
Krishna Bhumi - Villas: UPRERAPRJ6039  
[www.up-rera.in](http://www.up-rera.in)



## Shyam Kutir

Aesthetically designed, premium 5 BHK,  
G+1 Villas  
Plot Size - 4,306 sq. ft | Villa size - 4,502 sq. ft



## Keshav Kutir

Aesthetically designed, premium 3-4 BHK,  
G+1 Villas  
Plot Size - 2,519 sq. ft | Villa size - 2,992 sq. ft



## Gopal Kutir

Aesthetically designed, premium 3 BHK,  
G+1 Villas  
Plot Size - 1,399 sq. ft | Villa size - 1,786 sq. ft



apartments at  
*govardhan vas*

Spread across 11 towers, ranging  
from Studio to 3BHK apartments.  
Every tower commands a height of  
G+14 floors.

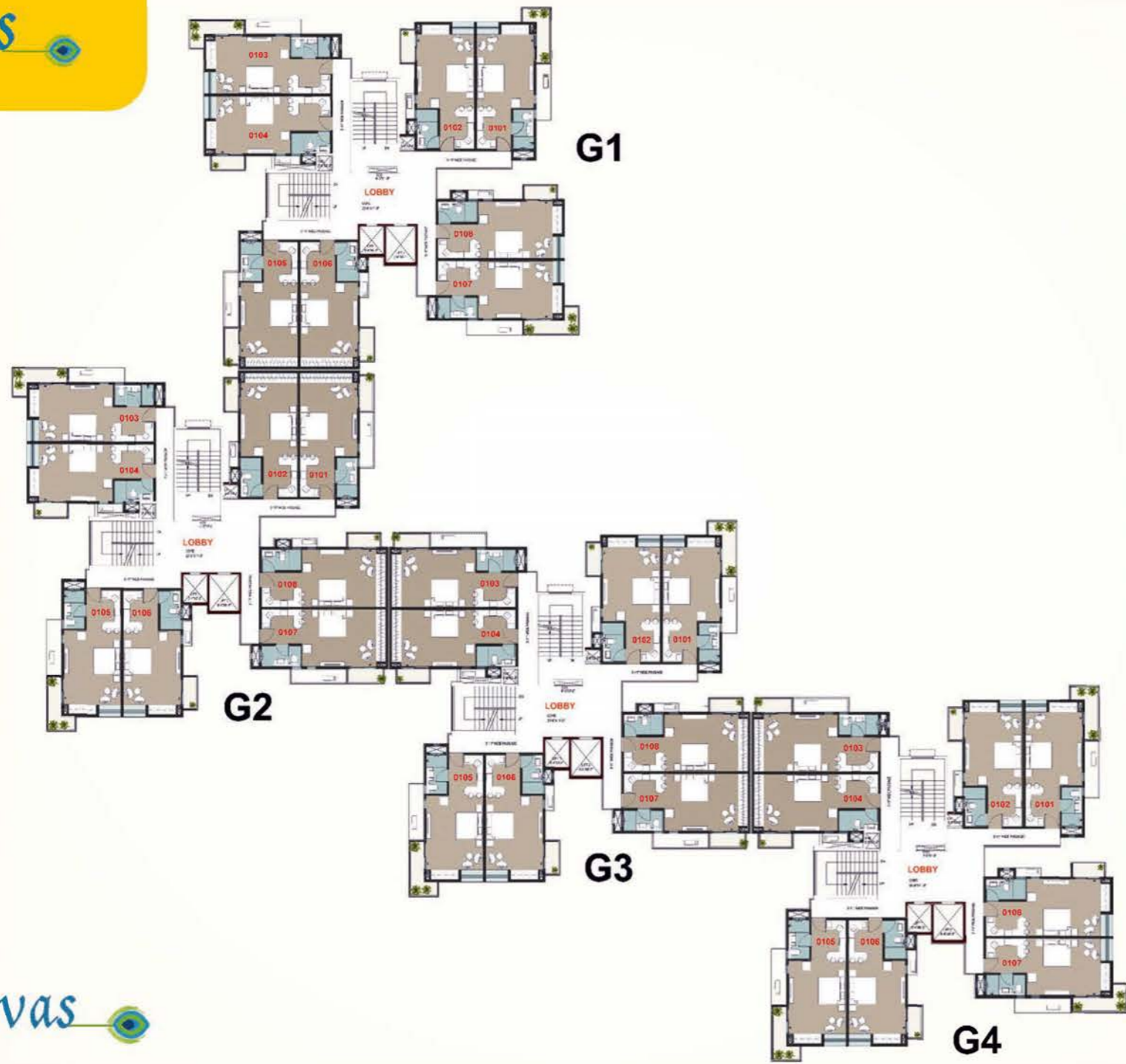
RERA Registration Numbers:  
Krishna Bhumi - Govardhan Vas: UPRERAPRJ5812  
[www.up-rera.in](http://www.up-rera.in)



Disclaimer: All images are conceptual renditions of the proposed and existing development in and around the project.

govardhan vas  
Master Layout





1st, 3rd, 5th, 7th, 9th, 11th & 13th Floors



2nd, 4th, 6th, 8th, 10th, 12th & 14th Floors







**G1**



1st, 3rd, 5th, 7th, 9th, 11th & 13th Floors



**G1**



2nd, 4th, 6th, 8th, 10th, 12th & 14th Floors



1st, 3rd, 5th, 7th, 9th, 11th & 13th Floors



2nd, 4th, 6th, 8th, 10th, 12th & 14th Floors

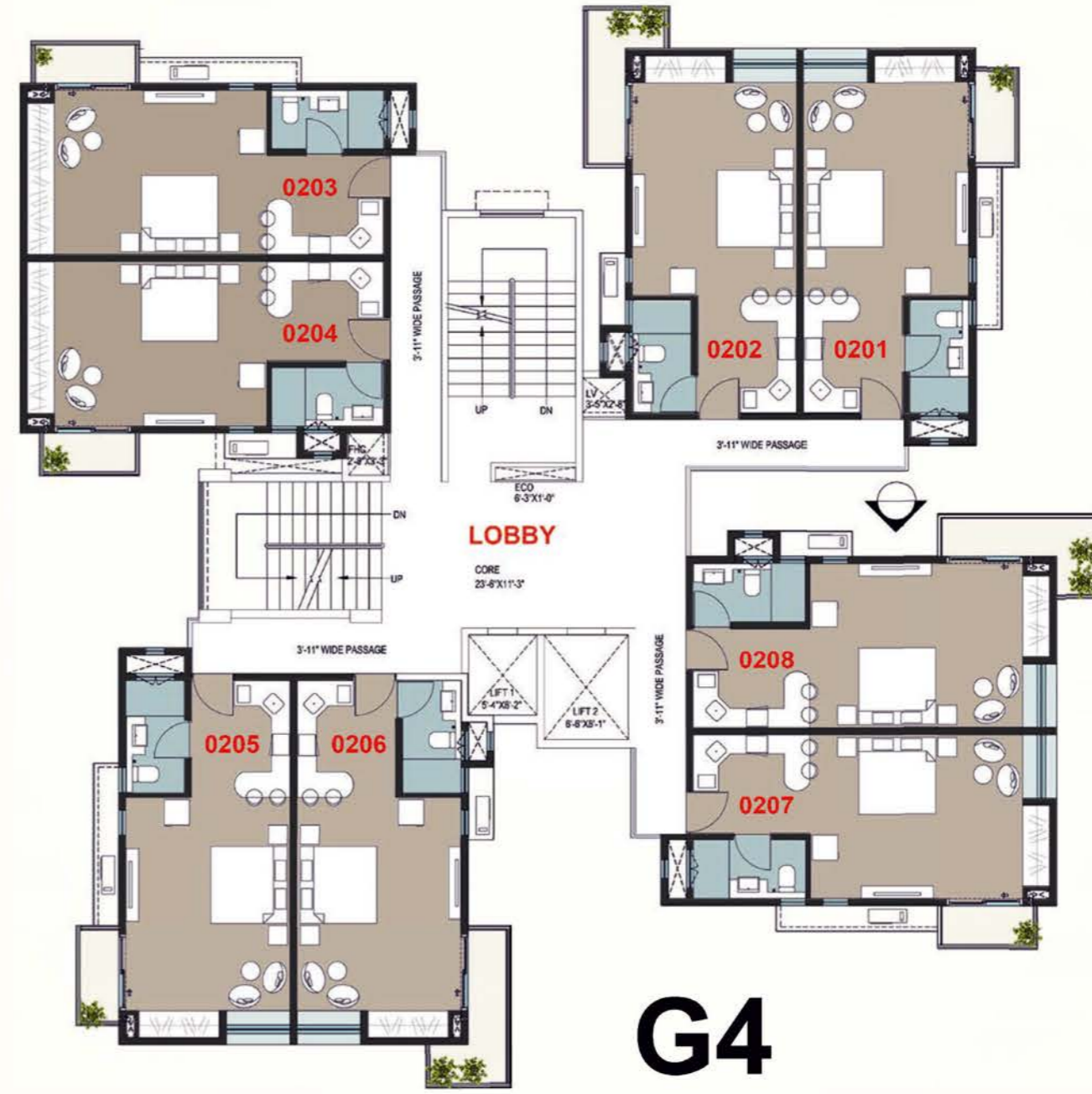






**G4**

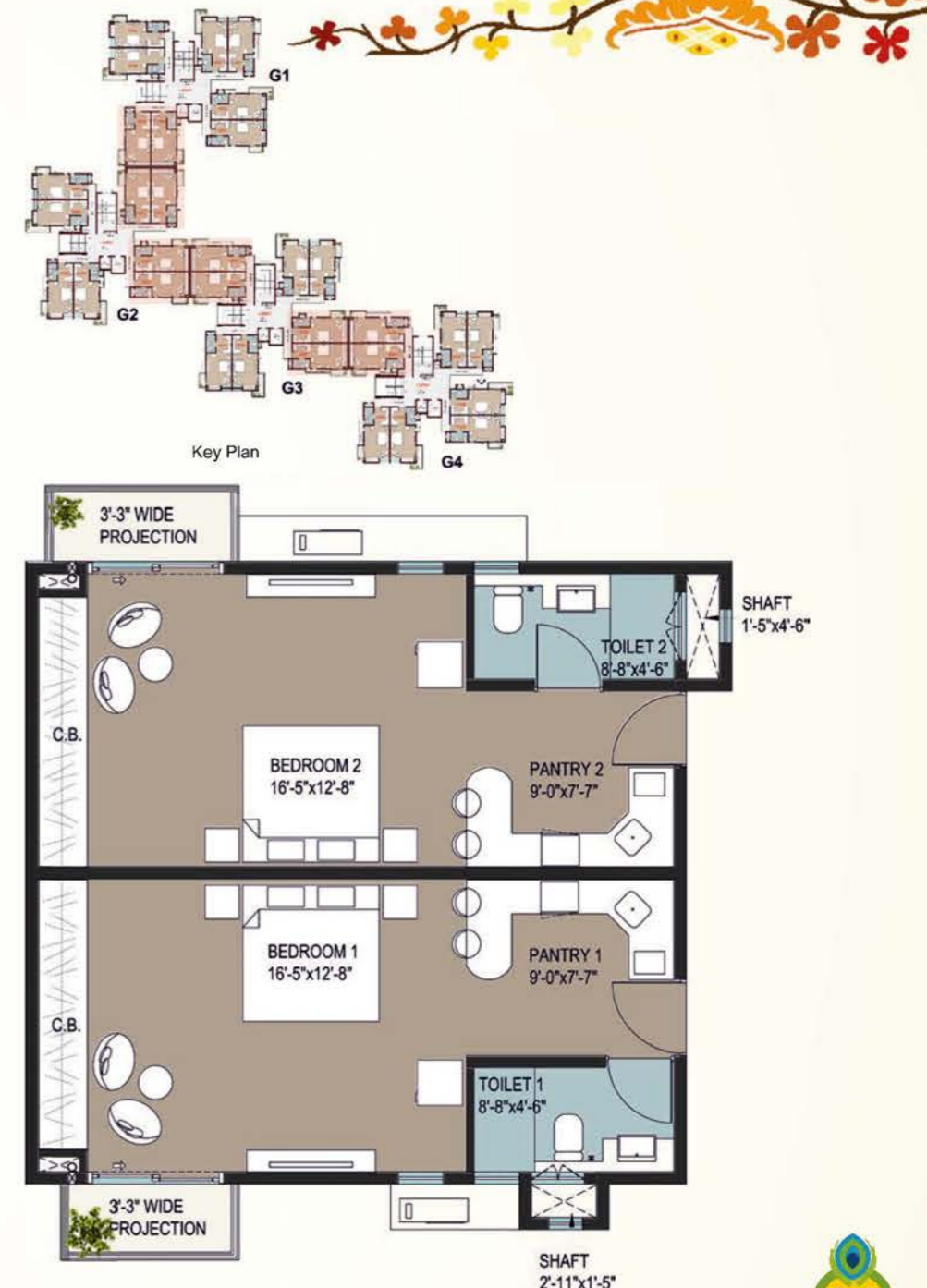
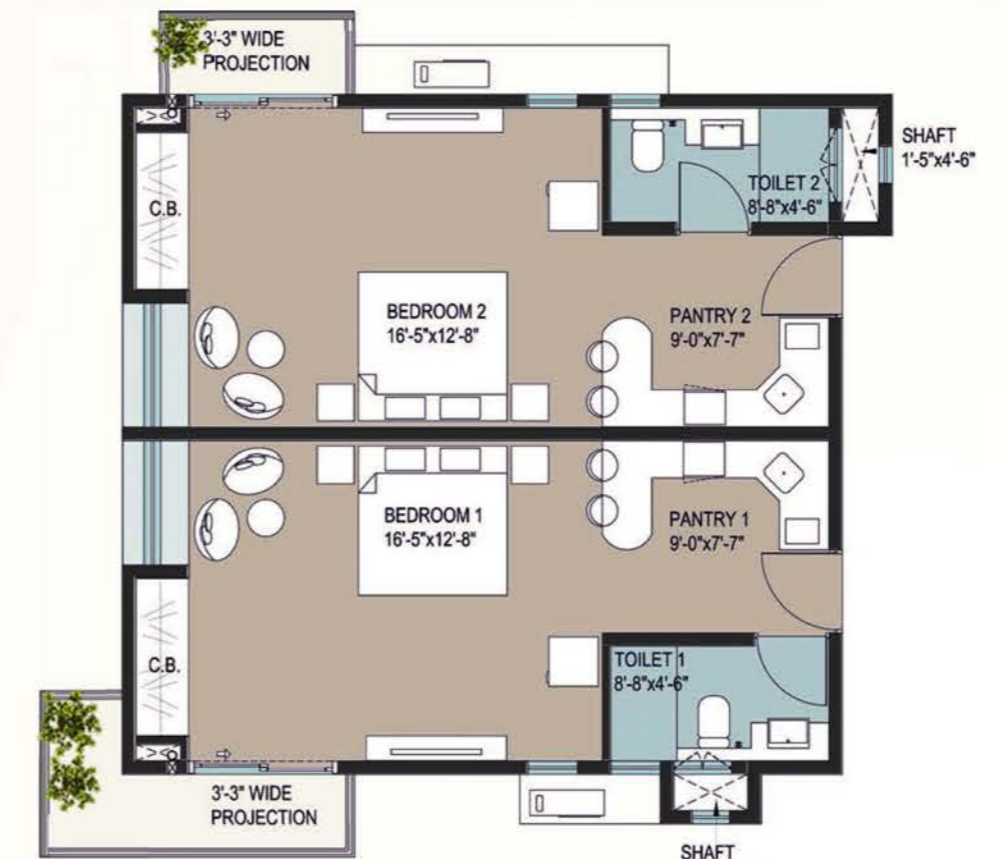
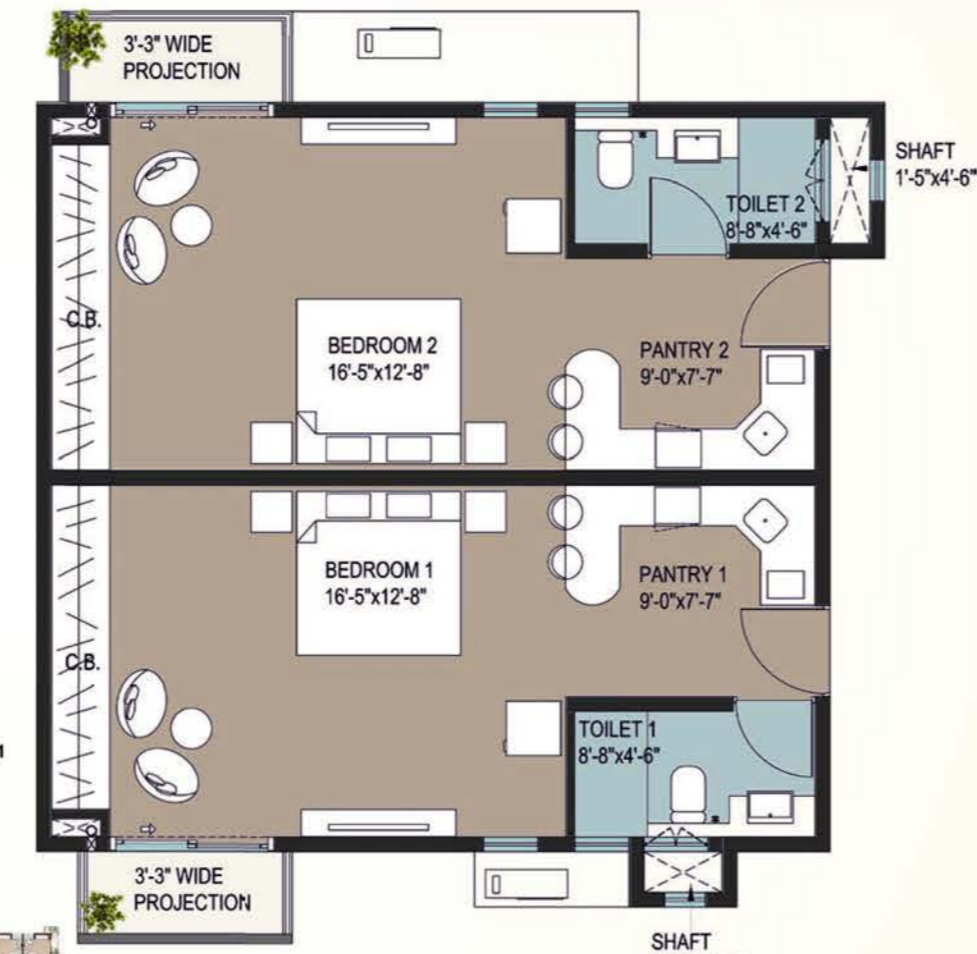
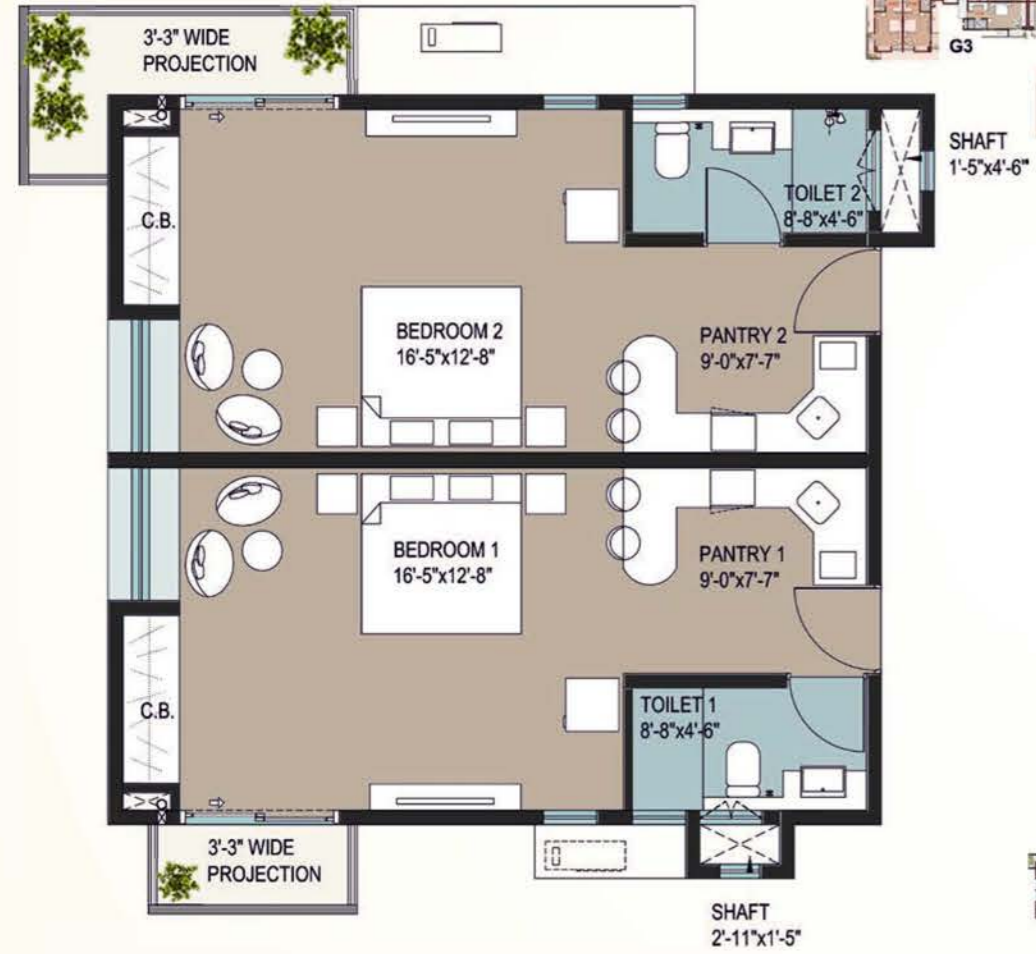
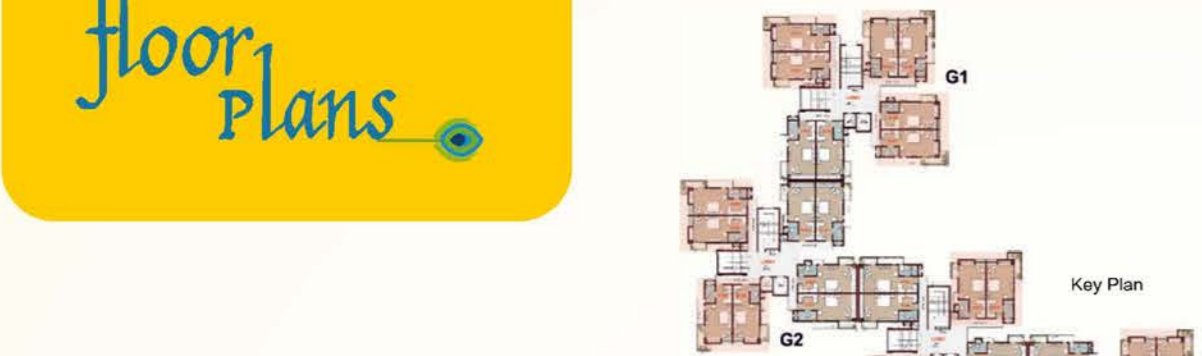
1st, 3rd, 5th, 7th, 9th, 11th & 13th Floors

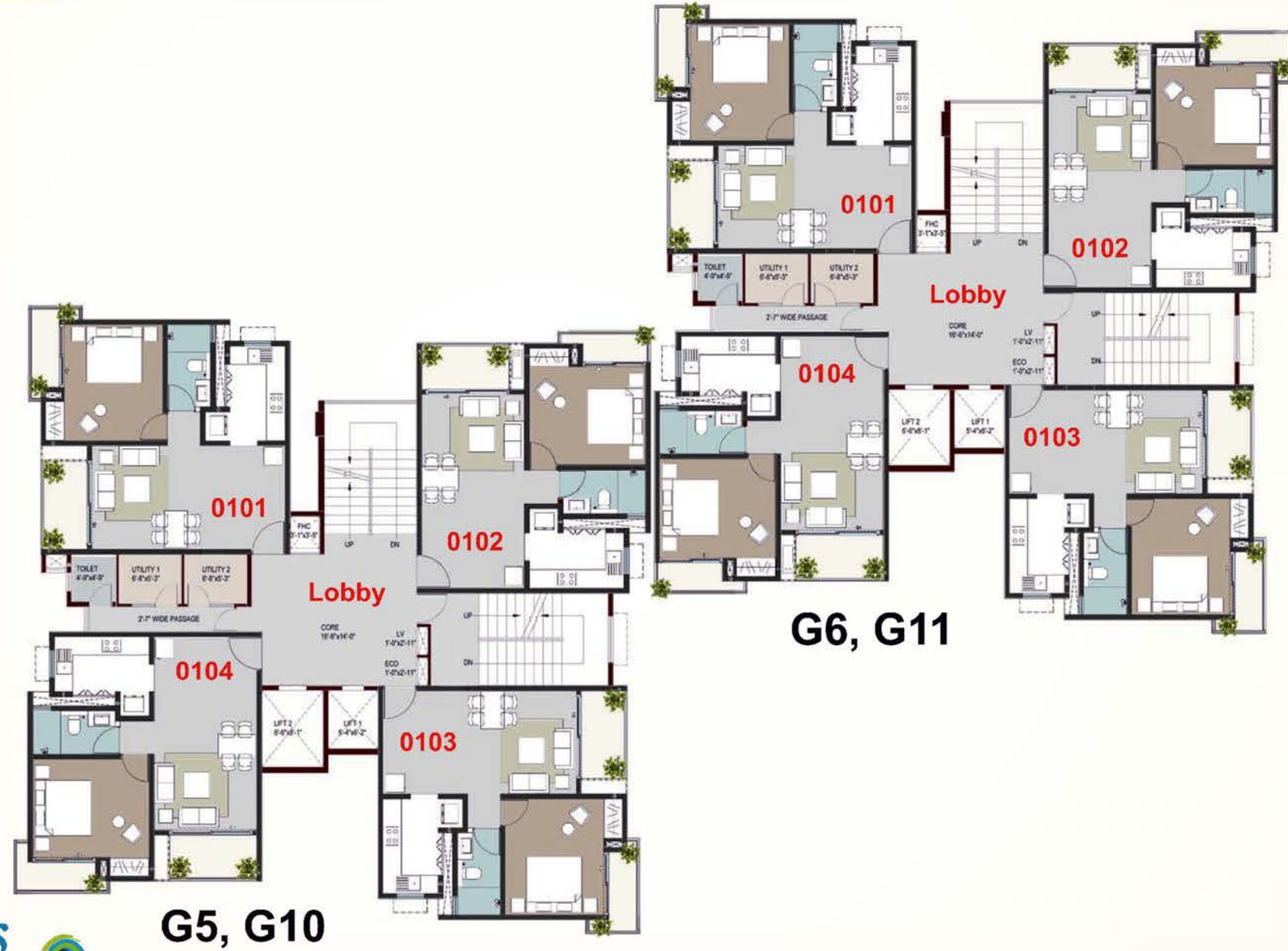


**G4**

2nd, 4th, 6th, 8th, 10th, 12th & 14th Floors

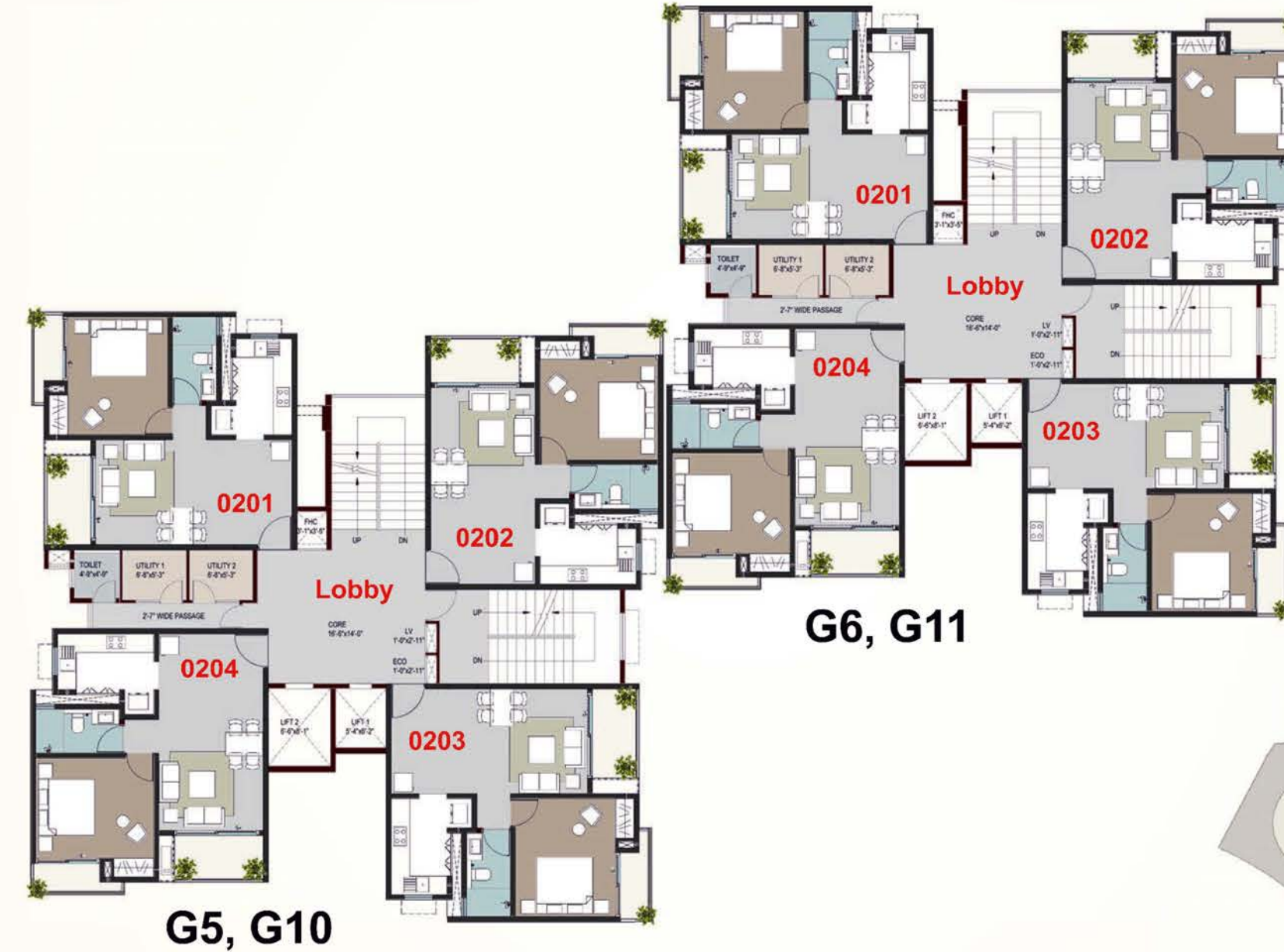






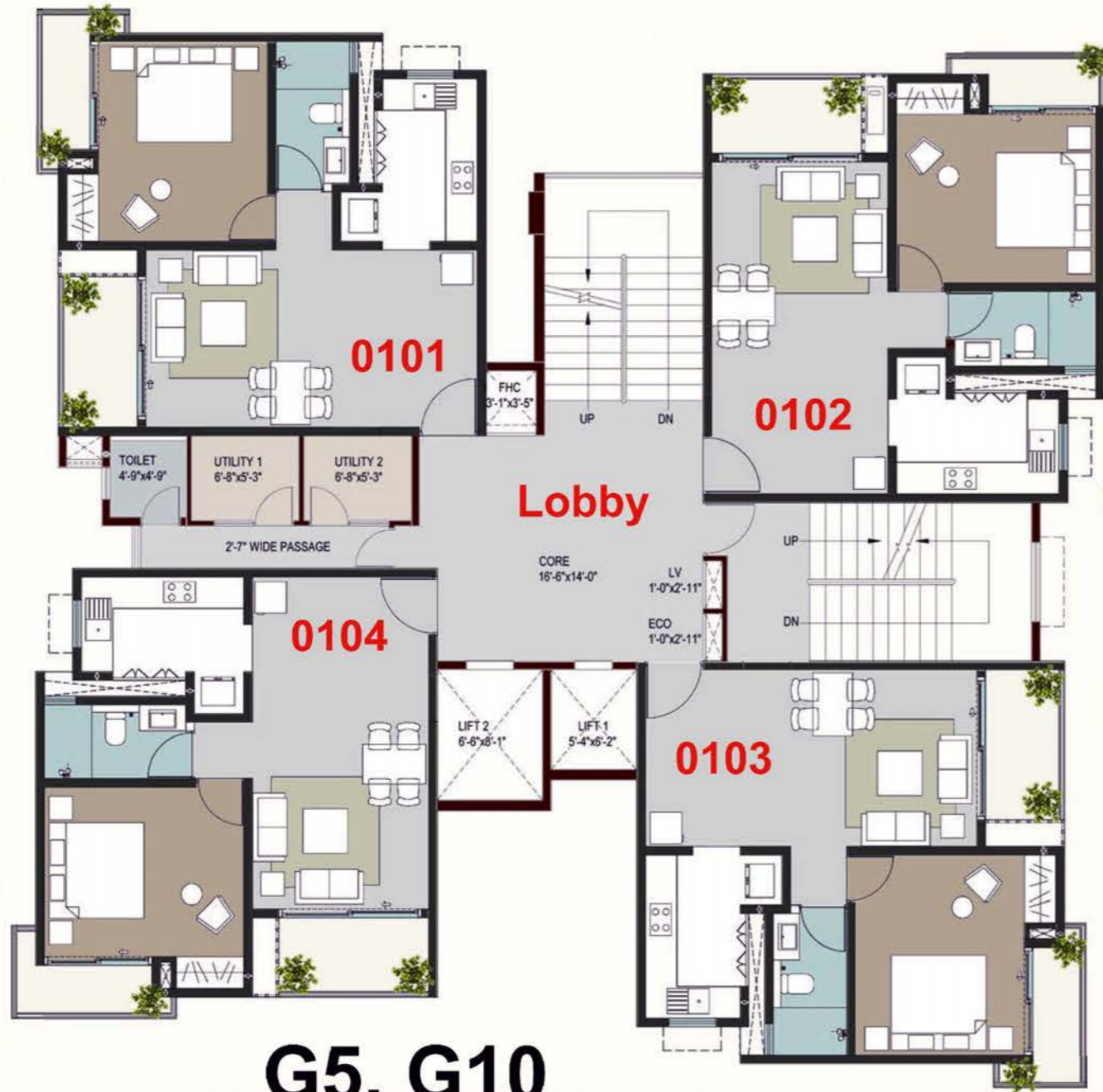
govardhan vas  
1 bedroom apartments  
Towers G5, G6, G10 & G11

1st, 3rd, 5th, 7th, 9th, 11th & 13th Floors



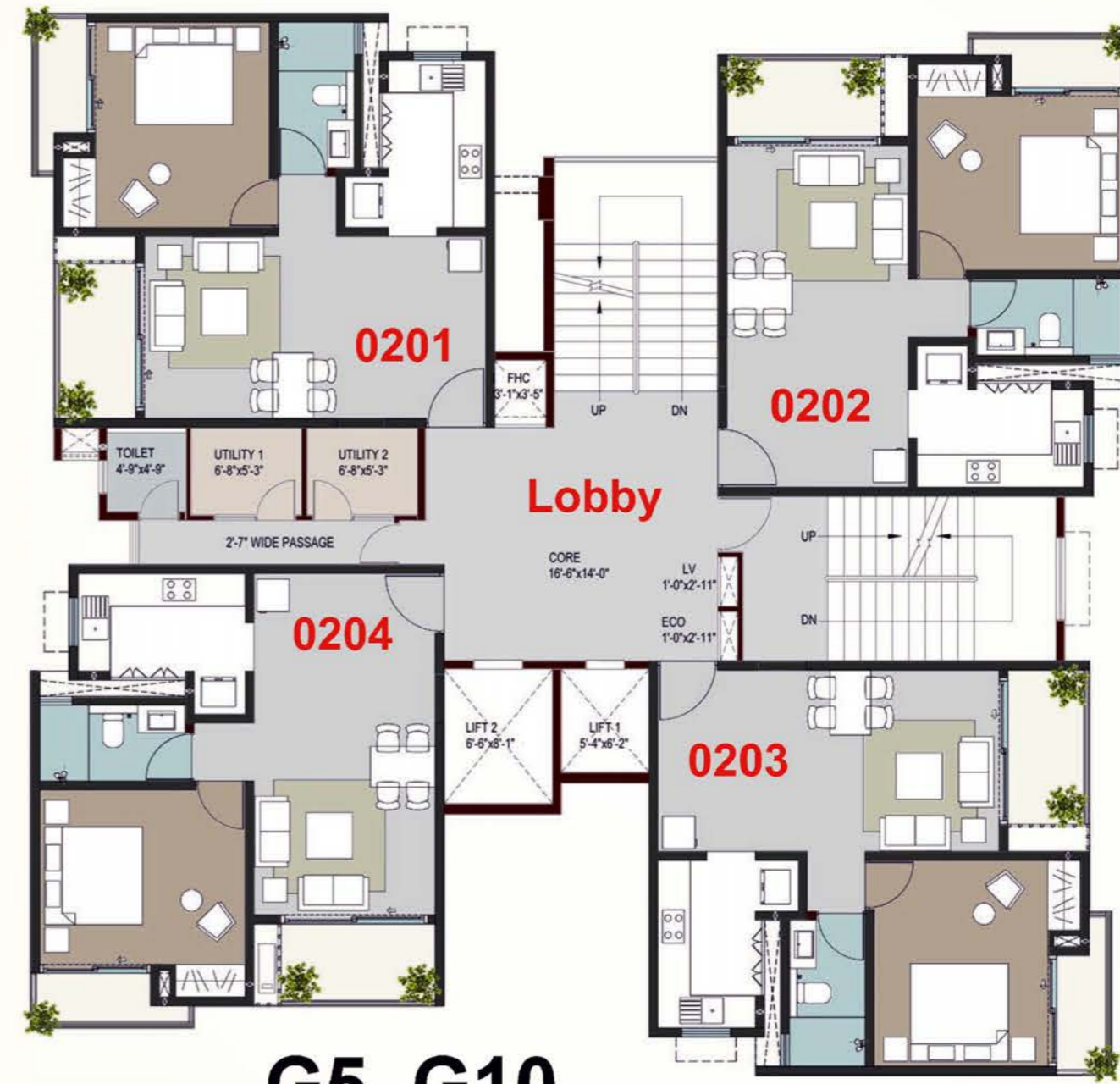
2nd, 4th, 6th, 8th, 10th, 12th & 14th Floors





**G5, G10**

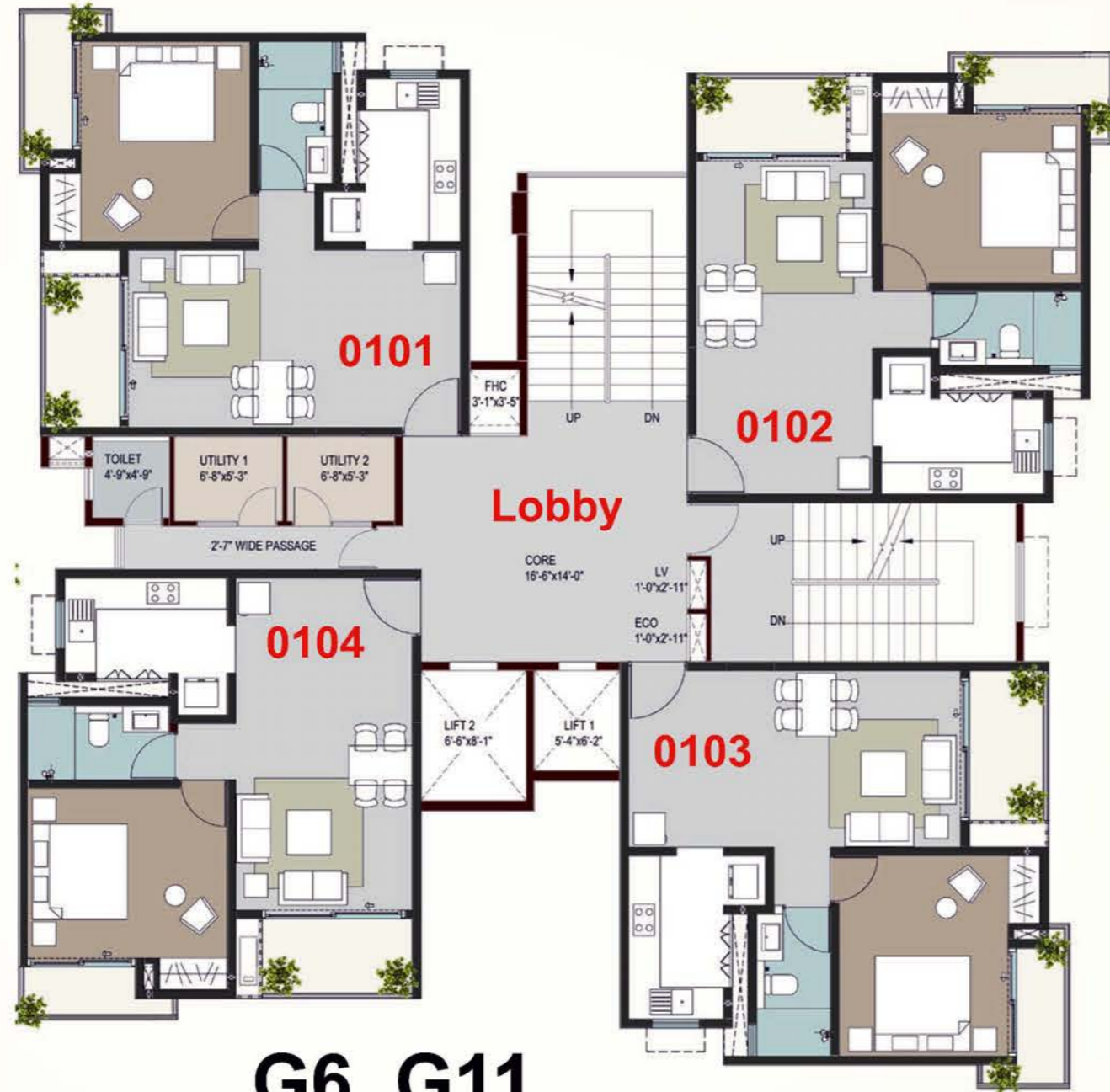
1st, 3rd, 5th, 7th, 9th, 11th & 13th Floors



**G5, G10**

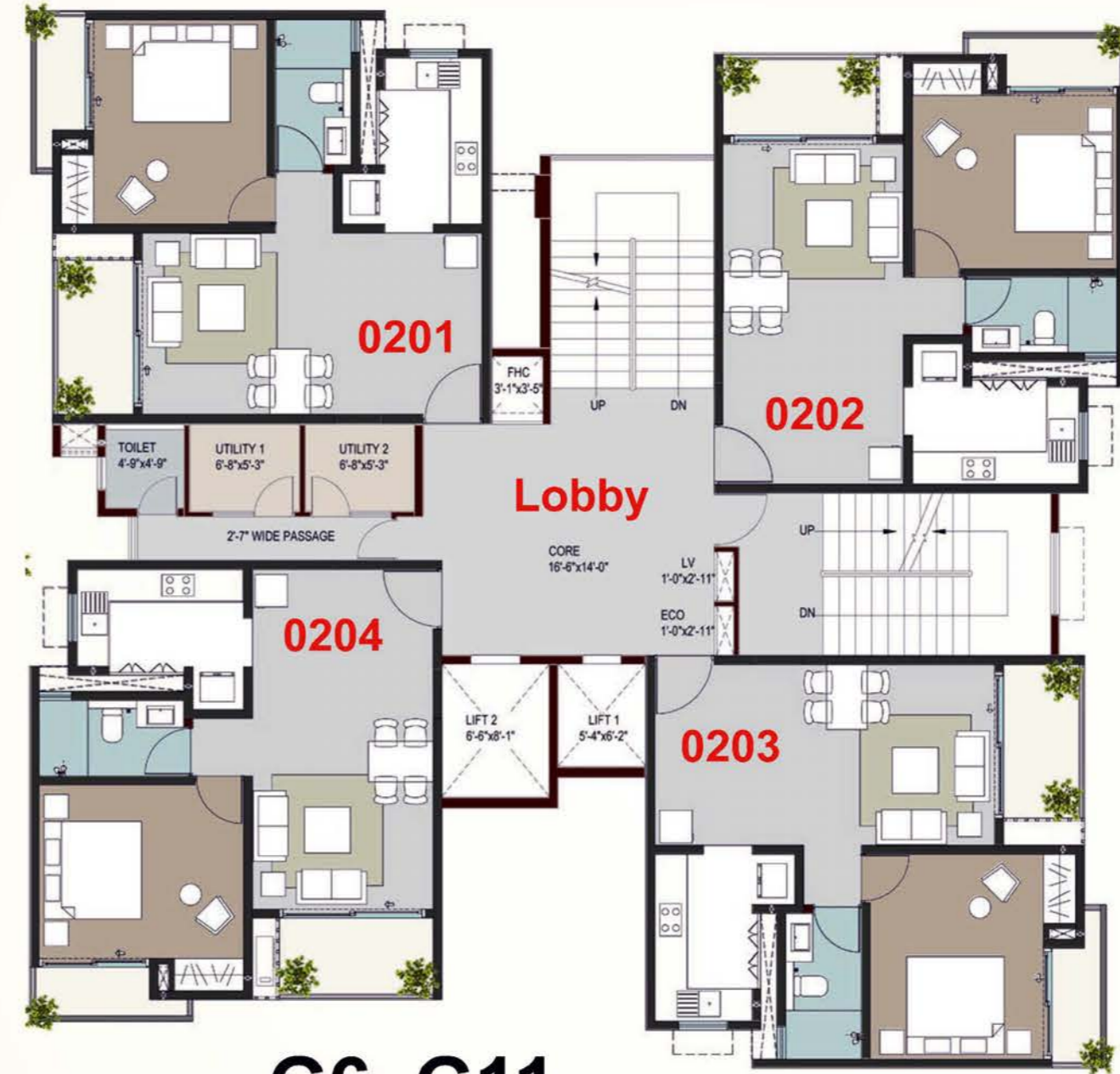
2nd, 4th, 6th, 8th, 10th, 12th & 14th Floors





**G6, G11**

1st, 3rd, 5th, 7th, 9th, 11th & 13th Floors

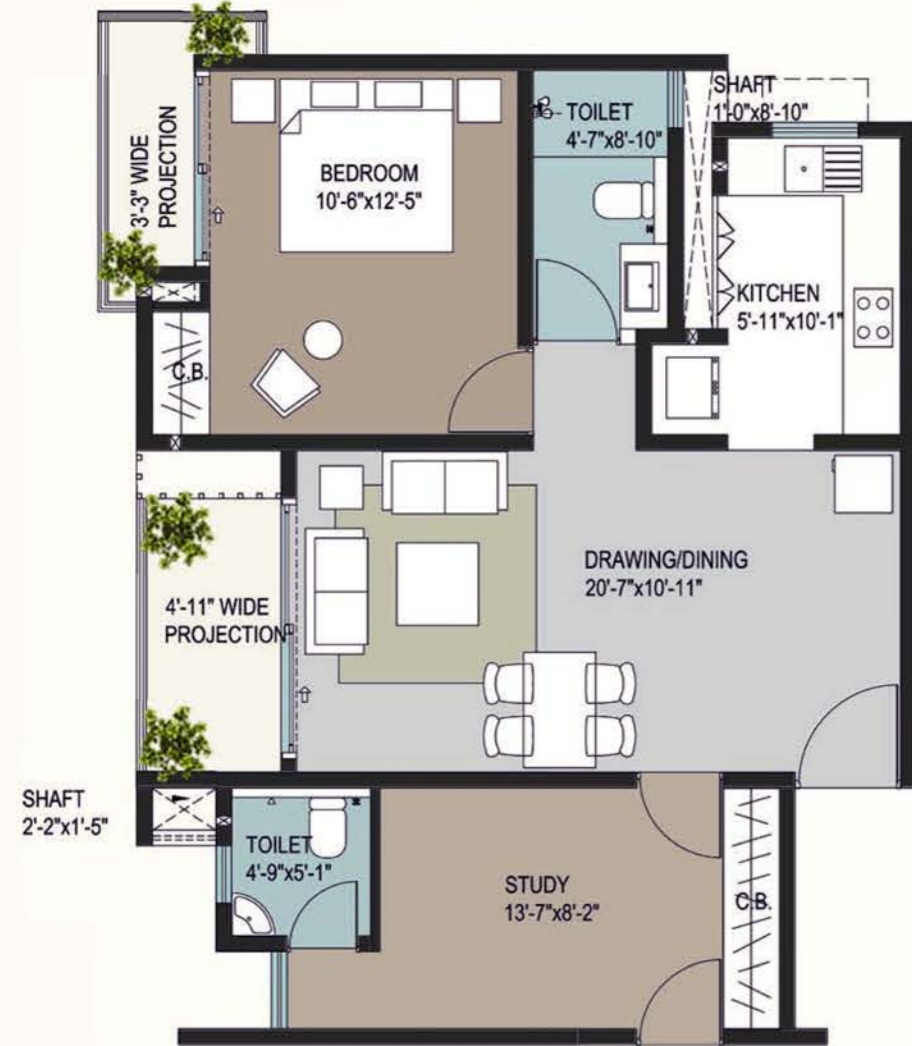


**G6, G11**

2nd, 4th, 6th, 8th, 10th, 12th & 14th Floors







Alternate Option with Study



1st, 3rd, 5th, 7th, 9th, 11th & 13th Floors

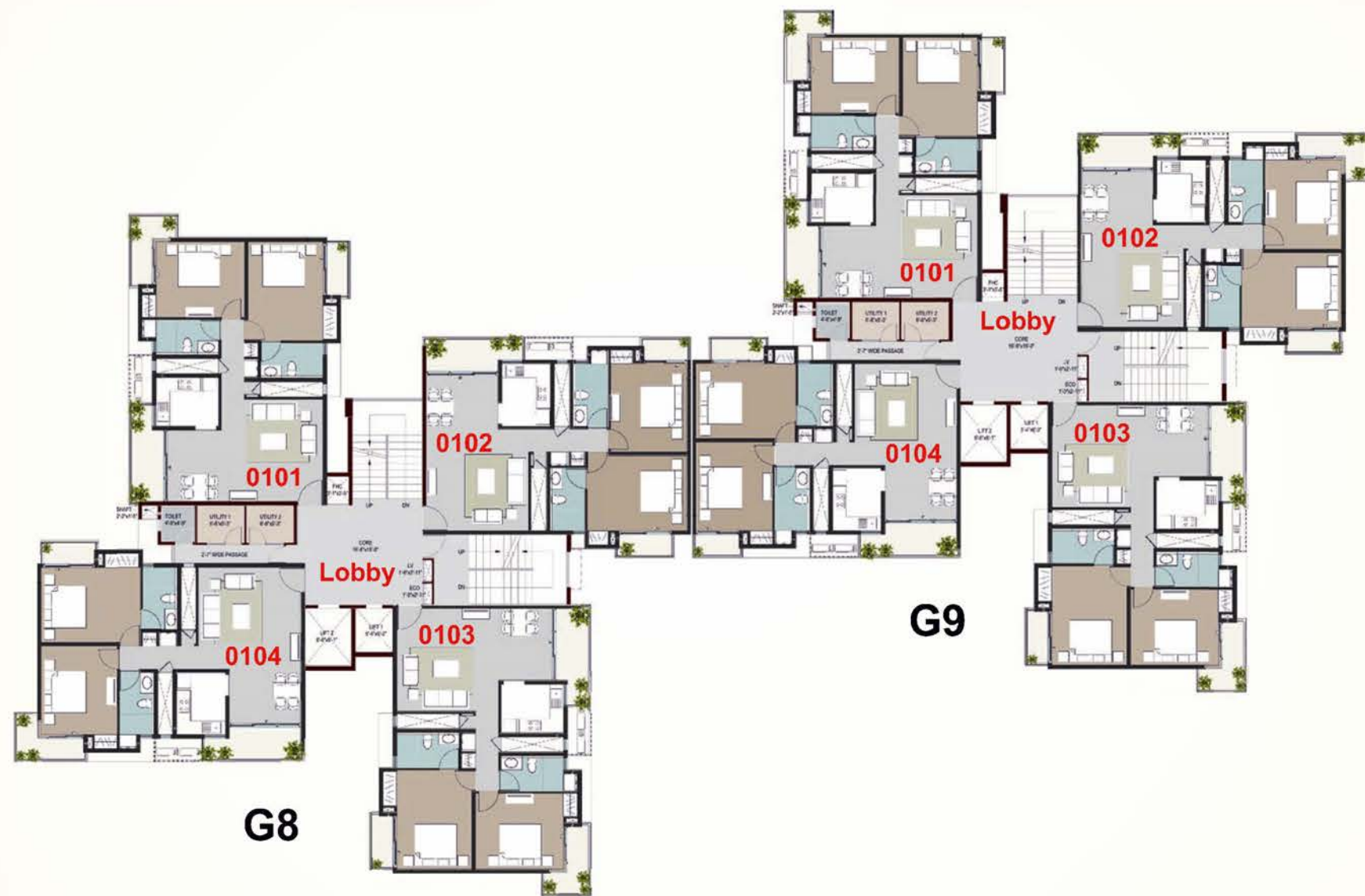


Alternate Option with Study

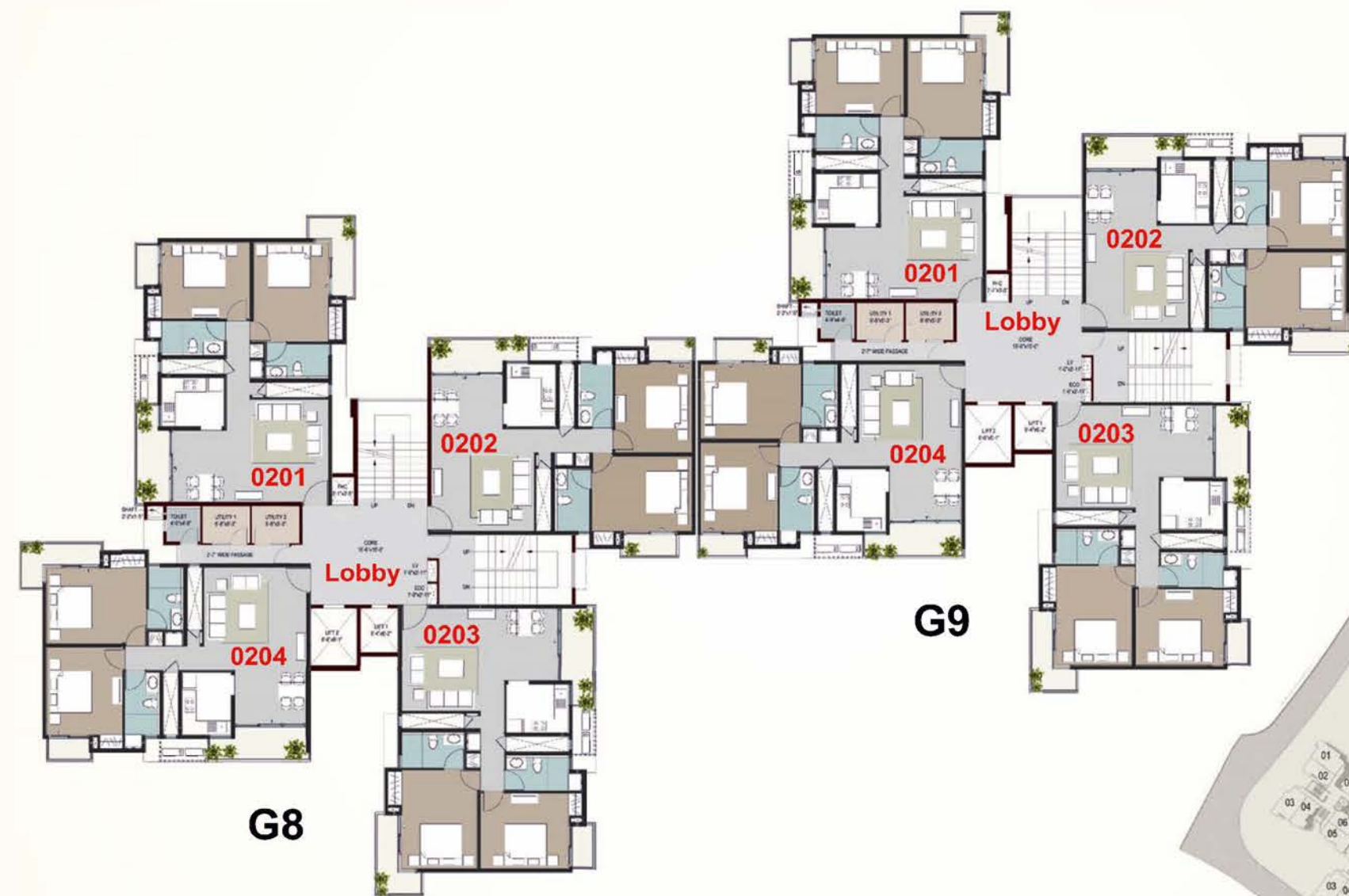


2nd, 4th, 6th, 8th, 10th, 12th & 14th Floors



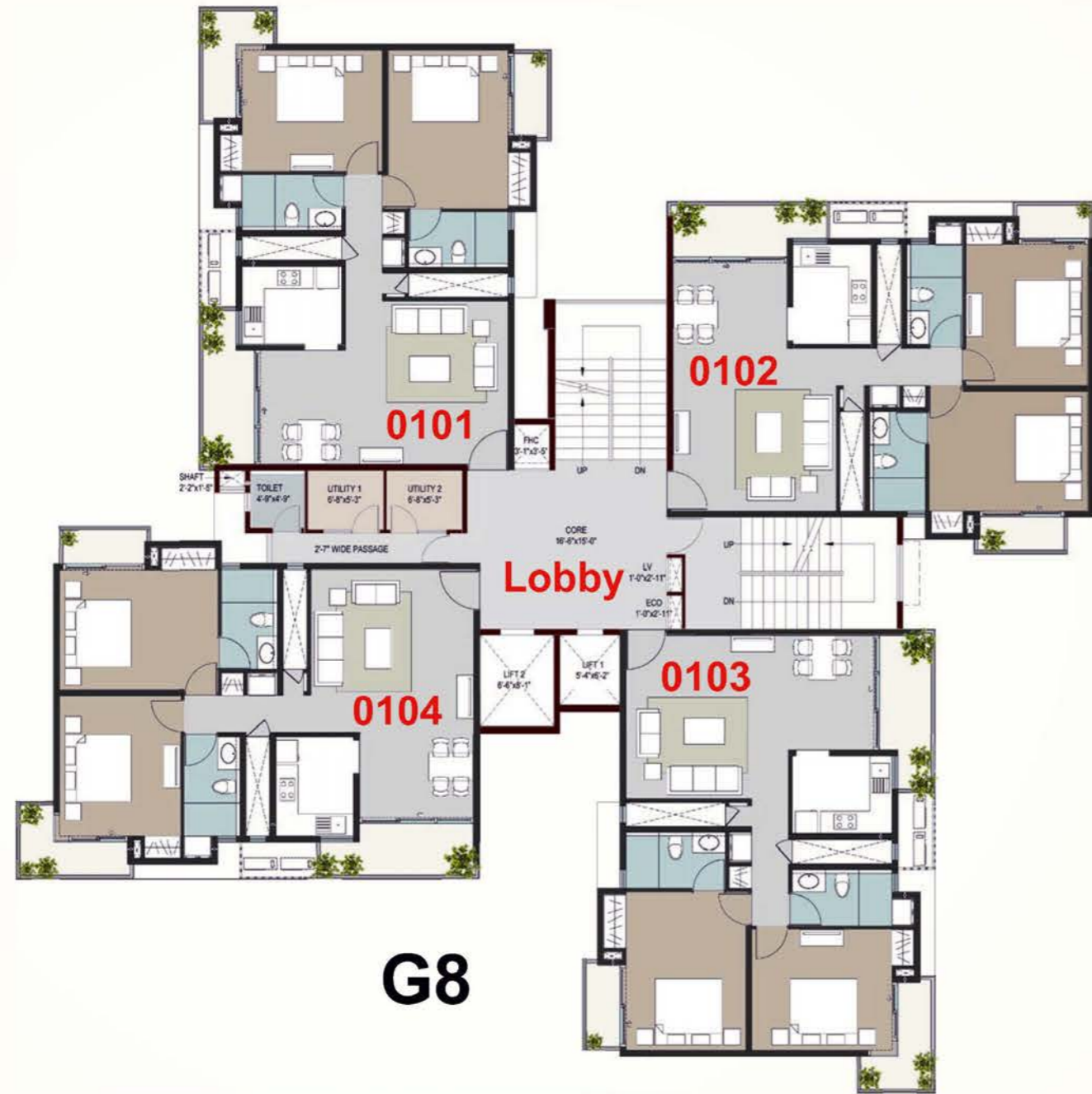


1st, 3rd, 5th, 7th, 9th, 11th & 13th Floors

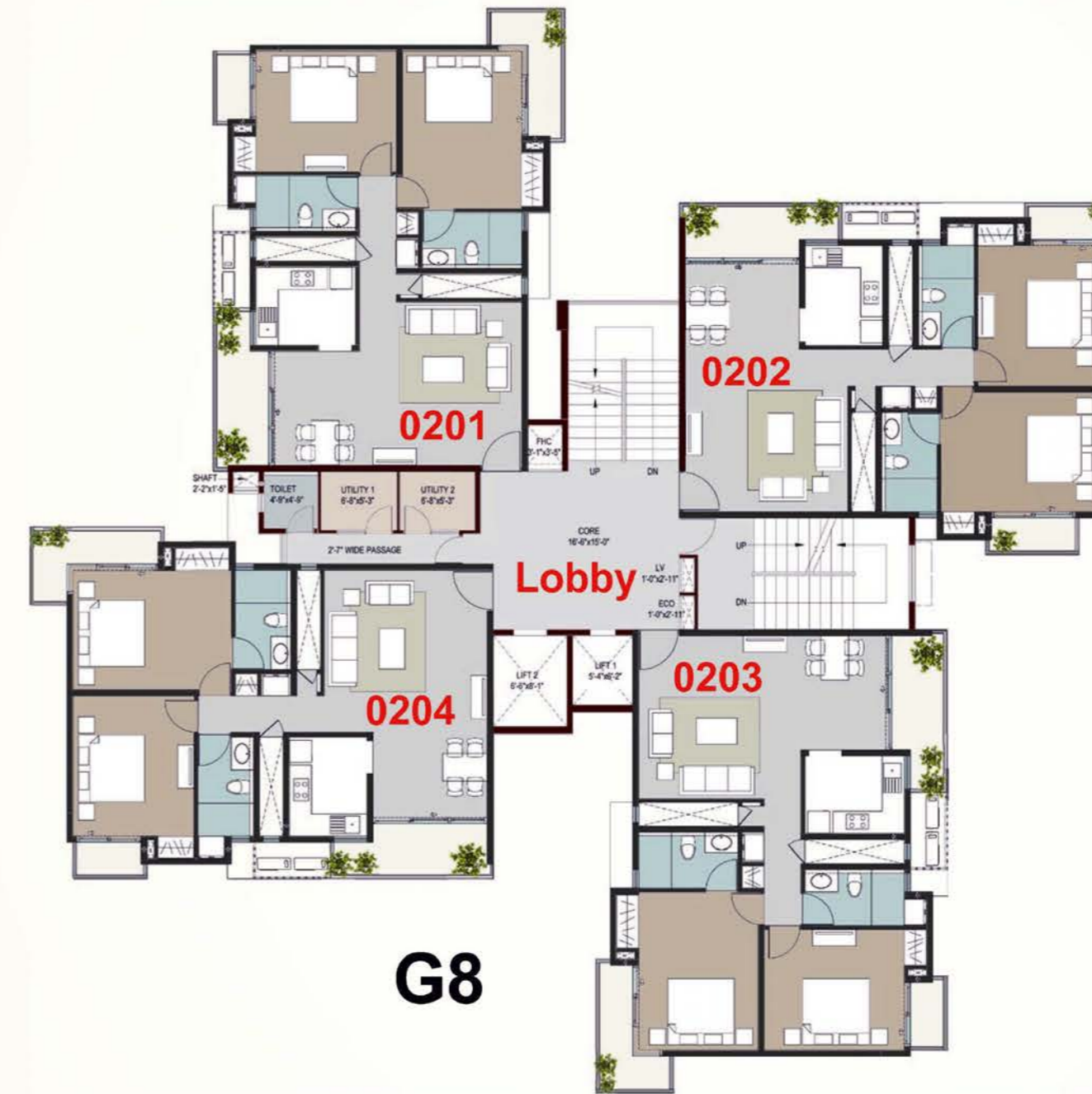


2nd, 4th, 6th, 8th, 10th, 12th & 14th Floors



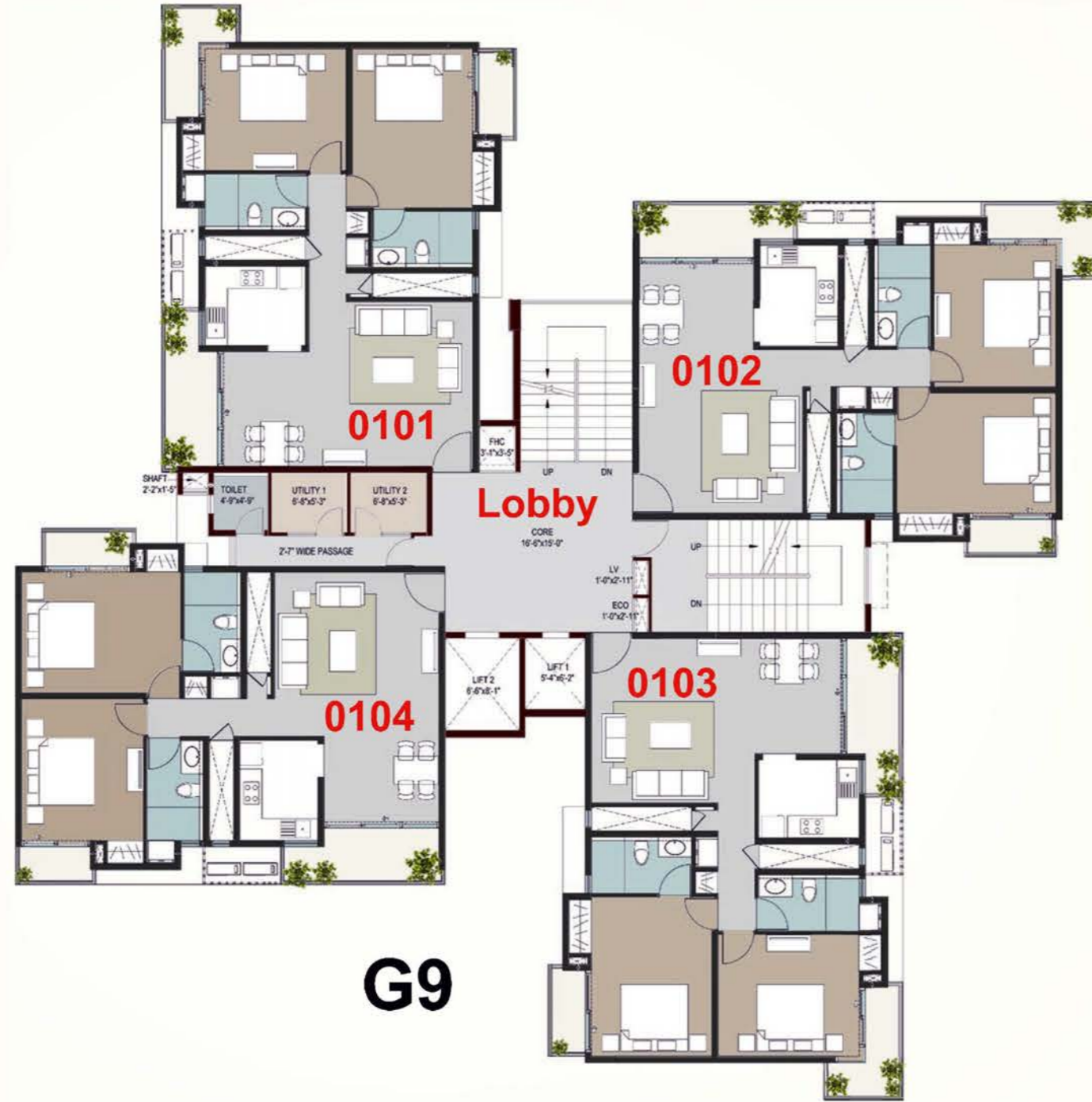


1st, 3rd, 5th, 7th, 9th, 11th & 13th Floors



2nd, 4th, 6th, 8th, 10th, 12th & 14th Floors





**G9**



1st, 3rd, 5th, 7th, 9th, 11th & 13th Floors



**G9**



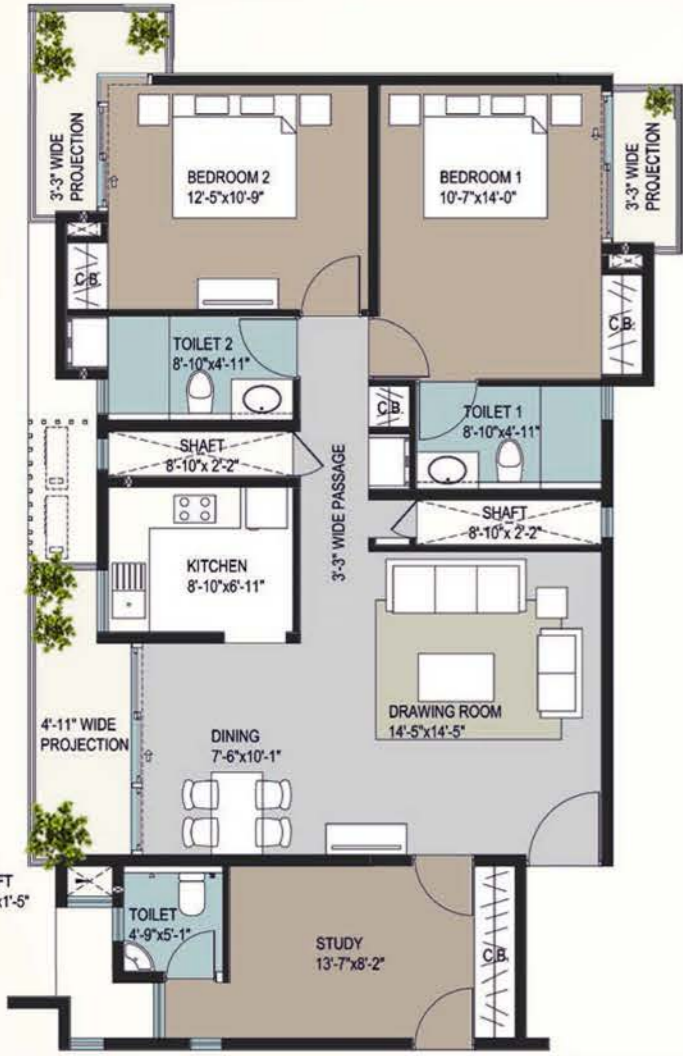
2nd, 4th, 6th, 8th, 10th, 12th & 14th Floors



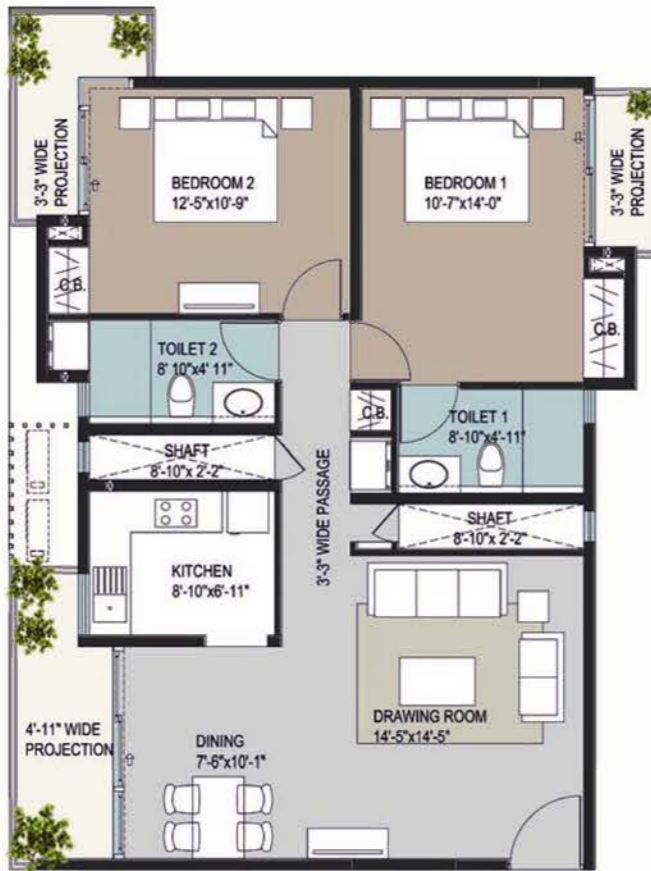
Key Plan



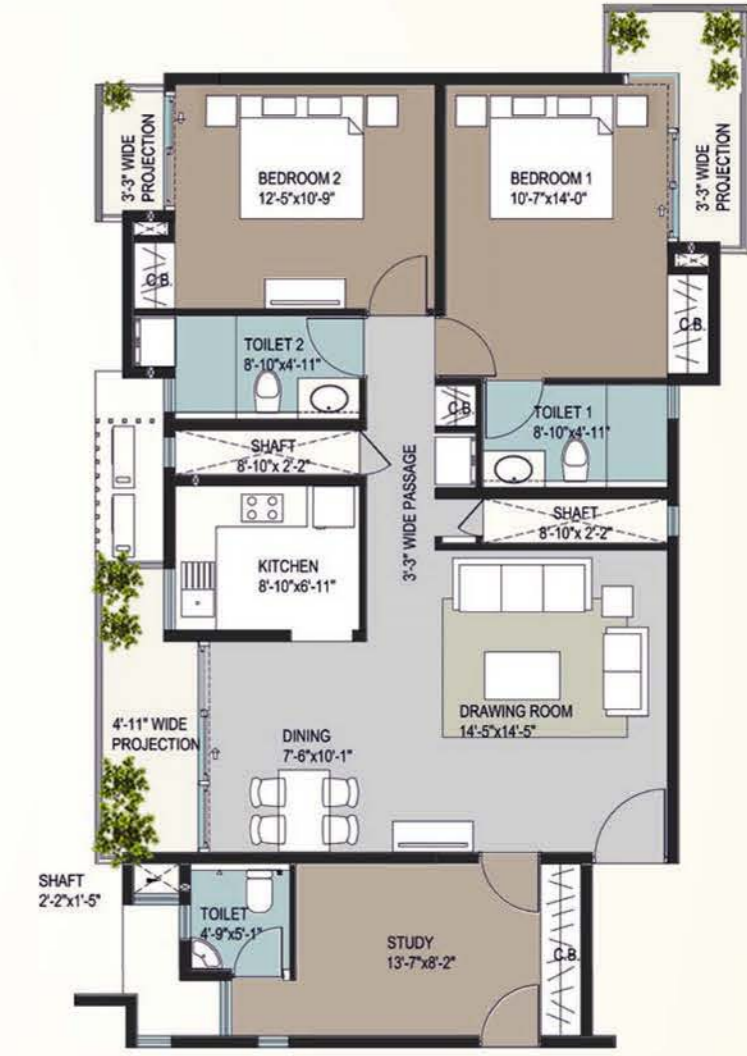
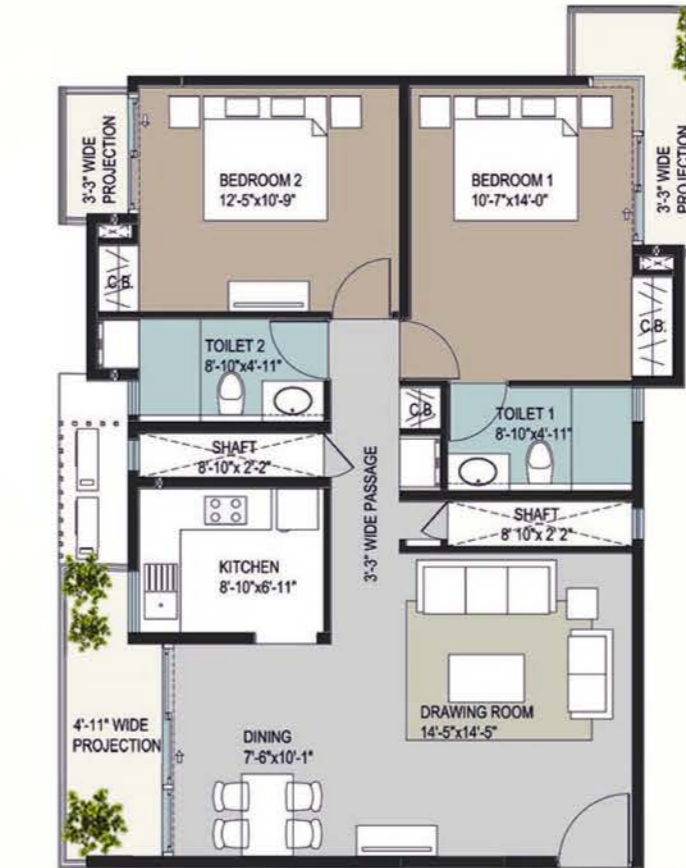
Key Plan



Alternate Option with Study

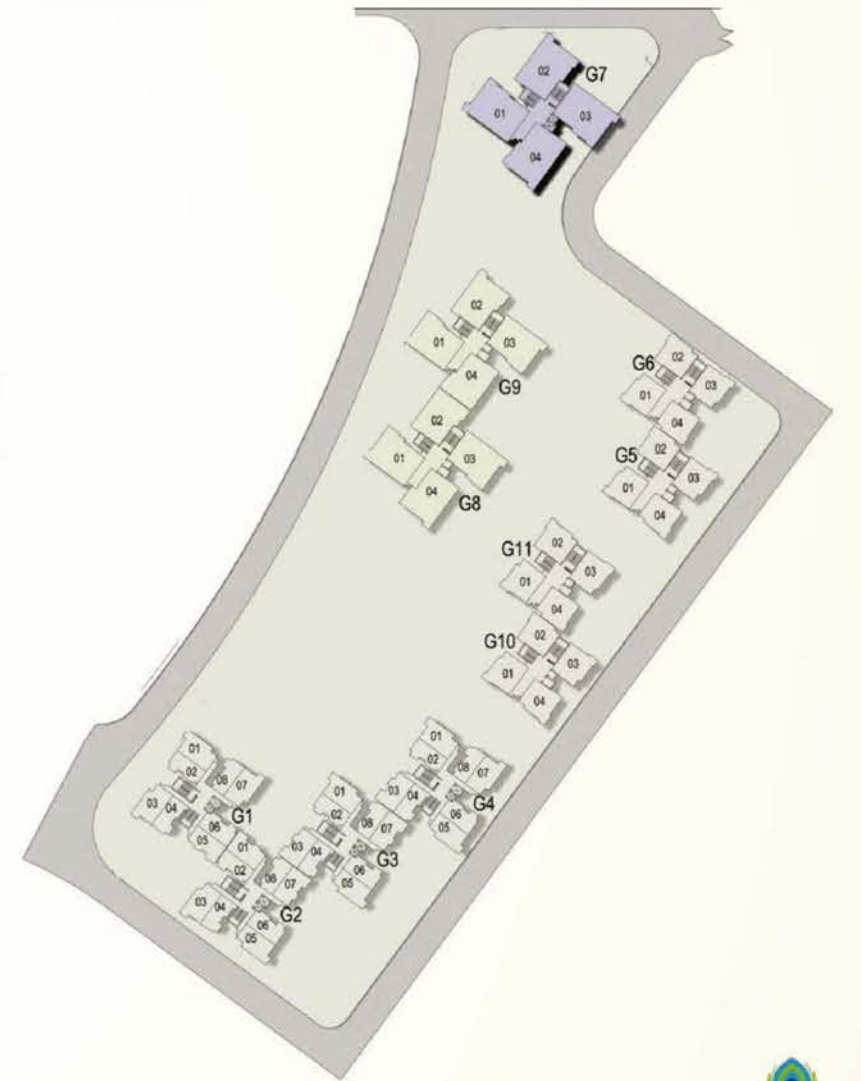
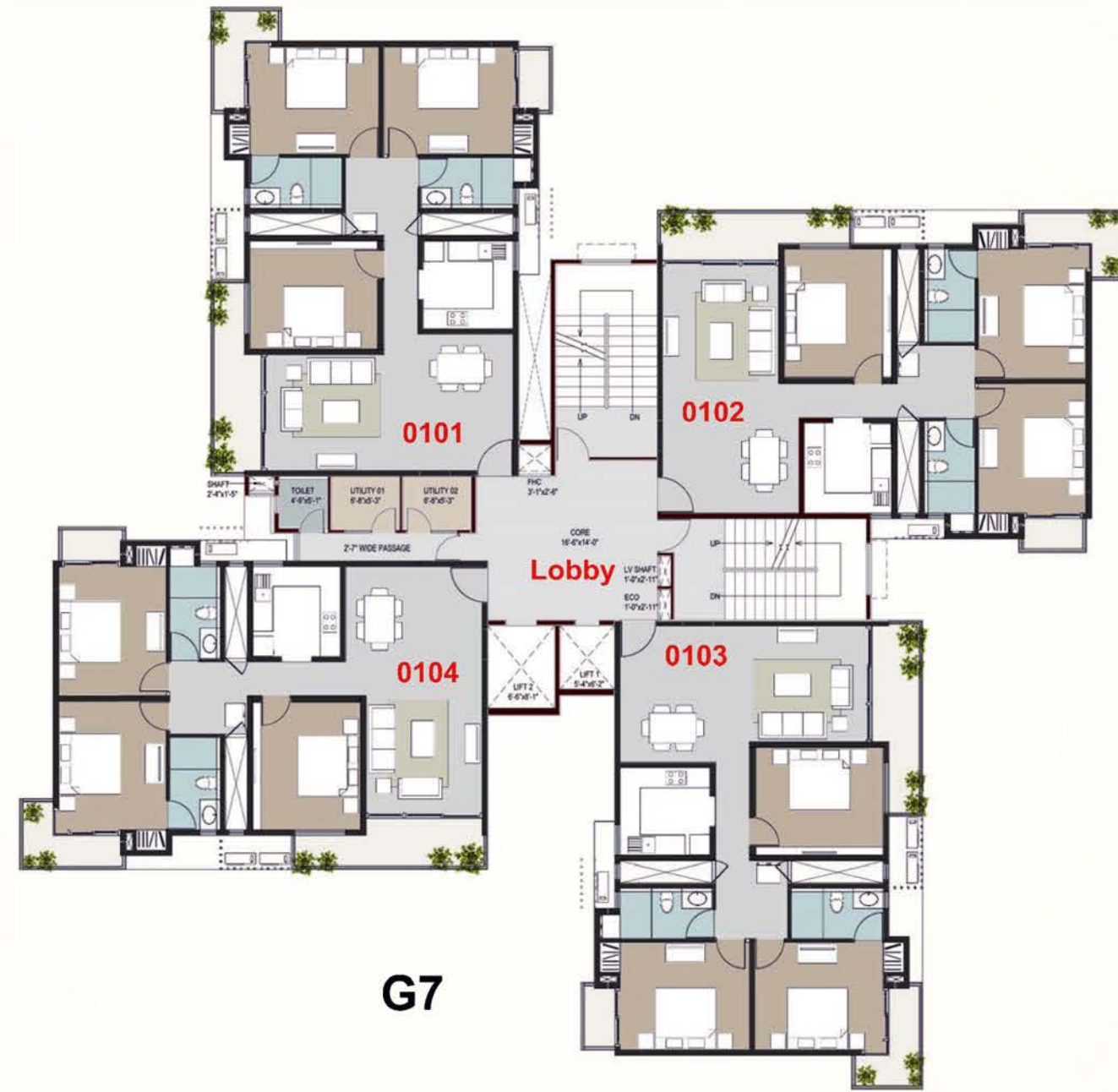


Key Plan



Alternate Option with Study



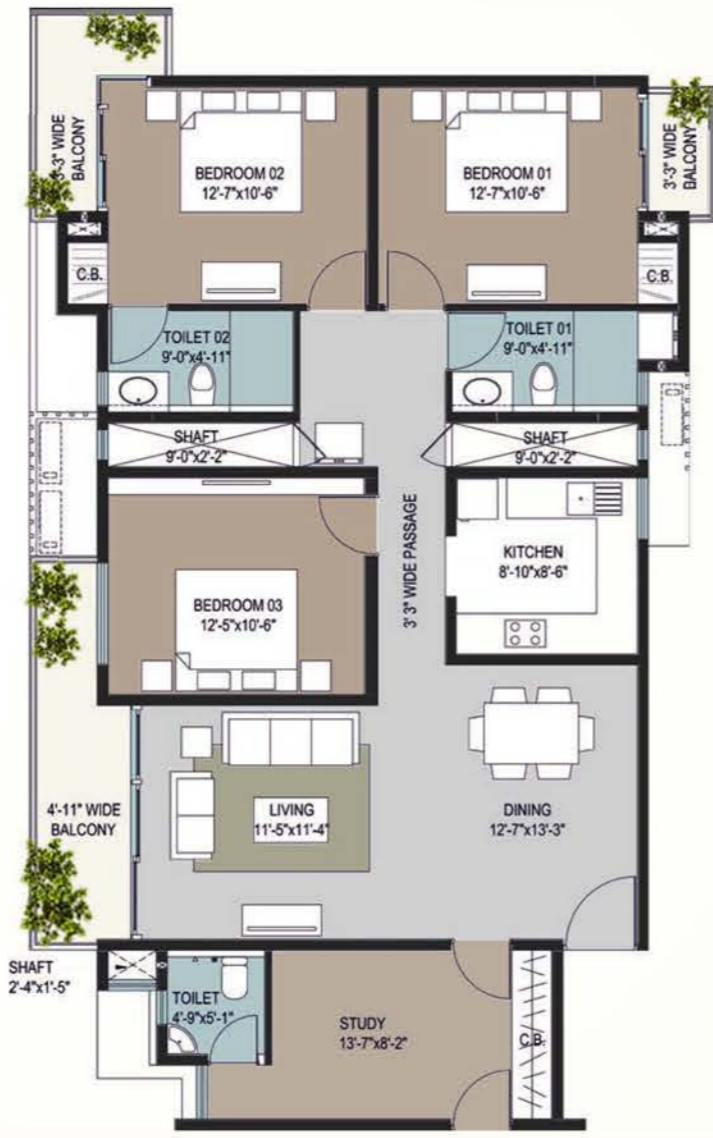
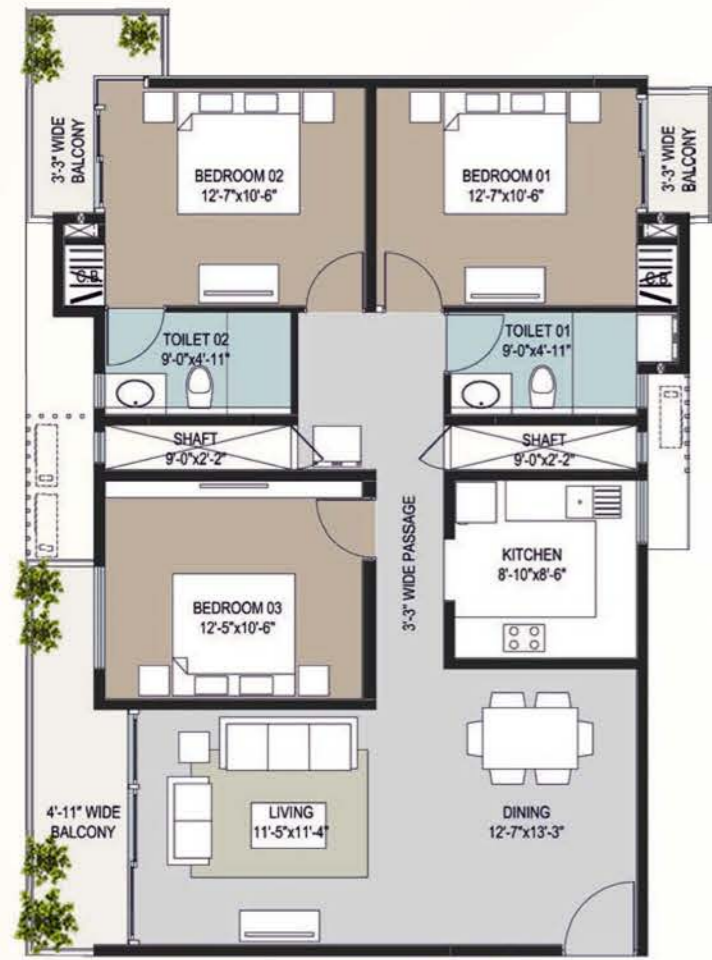




G7  
Key Plan



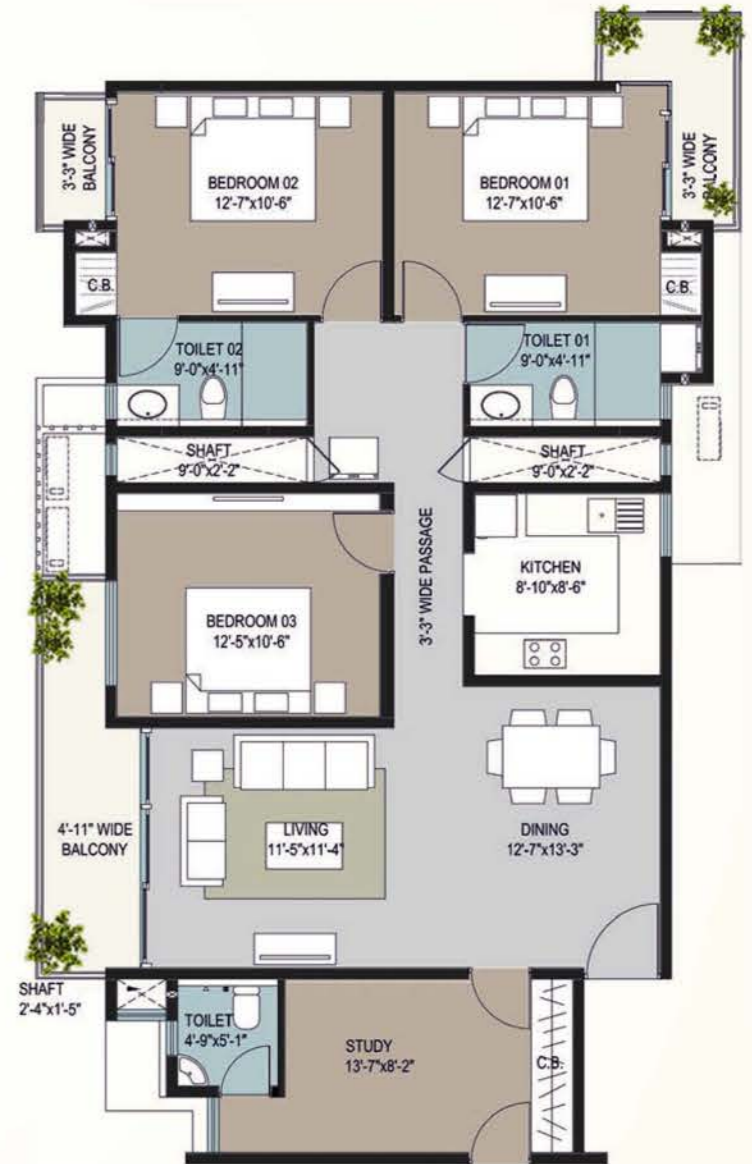
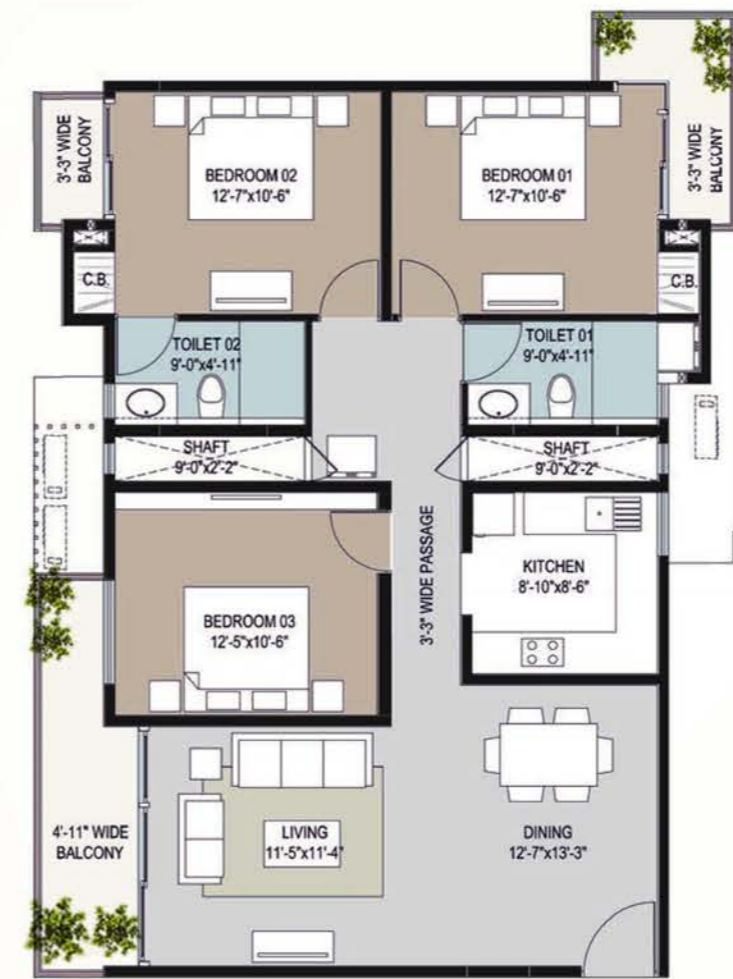
G7  
Key Plan



Alternate Option with Study



1st, 3rd, 5th, 7th, 9th, 11th & 13th Floors



Alternate Option with Study



2nd, 4th, 6th, 8th, 10th, 12th & 14th Floors



Live blessed

All day to day needs and conveniences will be within easy reach.



Club



Gymnasium



Swimming pool



Banquet



High security and surveillance



Laundromat



Food court



Convenience store



Spa and Ayurveda



Restaurant



Creche



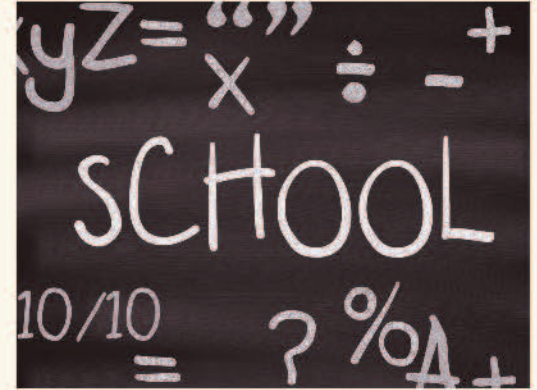
Theatre



Play Area



Coach service for Darshan



School



Hotel apartments





Outdoor games



Vast green area



Elder care



Diagnostic and medical centre



At Krishnabhumi, besides your spiritual well being, there will also be a world class Spa & Ayurveda for you to indulge in.



For the convenience of the elders in the family there will be doctors and nurses on call, diagnostic and medical centre. We are also providing ramps for easy access to all parts of the building.



There will be ample parking for all residents and guests.



There will be a separate exclusive access to the temple for all Krishna Bhumi residents. Also on festival days, they will have a dedicated queue.



Every apartment owner will get a special puja every year on the date of their choice.



Avail of our complimentary coach service for darshan to Bankebihari temple, ISKCON temple and Prem mandir.

# govardhan vas specifications

## Structure

- RCC Framed structure designed in compliance with seismic forces and foundation fulfilling

## Wall Finish

- External:**Exterior Grade Paint / Texture Paint / Equivalent
- Internal:**Emulsion Paint on POP including ceiling / Equivalent

## Elevators

- 2 elevators per tower provided

## Flooring

- Living & Dining:**Vitrified Tiles
- Bedrooms:**Vitrified Tiles
- Kitchen:**Anti-skid Tiles
- Toilets & powder Rooms:**Anti-skid Tiles
- Balconies and terraces:**Matt finish / Anti-skid Ceramic Tiles

## Doors and Windows

- Main Door:**Polished wooden frame with polished flushed door shutters /Equivalent
- Internal Doors:**Painted wooden frame with painted flushed door shutters / Equivalent
- Windows:**Aluminum or UPVC frame windows with Glass / Equivalent

## Kitchen

- Counter:**Granite counter top with Stainless steel sink
- Dado:**Ceramic tile dado
- General:**Provision for water purifier

## Toilets

- Wall Finishes:**Glazed /Matt finish ceramic tile dado
- Fixture and Fittings:**Sanitary ware, CP fittings and accessories of good quality

## Electrical

- Wiring:**Concealed copper wiring
- Lighting and Fan Outlet:**Adequate provision of points for Lights, fans and plugs in Living & dining, Bed Rooms, Kitchens and toilets
- AC power outlet:** All bedrooms and living and dining
- Geyser power outlet:**All toilets and kitchen
- Exhaust fan outlet:**All toilets and kitchen
- TV and Telephone outlets:**In living dining and master bedroom
- Internet Provision:**Provision in the apartment
- Switches:**Modular switches of reputed brand
- Power Back up:**Adequate power back up

## Lift Lobbies

- Ground Floor Entrance Lobby:**Combination of Granite and Vitrified tiles / Equivalent
- Upper Floor Lobbies:**Vitrified tiles
- Staircase:**Polished Indian Stone

## Security

- General:**Intercom System and CCTV cameras

## Interior Upgrades

- Interior finish upgrade options to be available in due course



# infinity

committed to a greener tomorrow



## IT BUSINESS PARKS

infinity  
**benchmark**  
KOLKATA  
Platinum Rated  
USGBC

Godrej  
Waterside  
KOLKATA  
Gold Rated  
IGBC

infinity  
**IT lagoon**  
KOLKATA  
Platinum Rated  
IGBC

MERLIN INFINITE  
KOLKATA  
Gold Rated  
IGBC

MARLIN BUSINESS PARK  
KOLKATA  
Gold Rated  
IGBC

Delivered Green Space Approx 4.5 million Sq. Ft.

## RESIDENTIAL & RETAIL

Signature  
estates  
GUWAHATI  
Gold Rated  
IGBC

INFINITY heights  
GUWAHATI  
Gold Rated  
IGBC

KRISHNA  
BHUMI  
VRINDAVAN  
Gold Rated  
IGBC\*\*

INFINITY  
SAPPHIRE  
SQUARE  
RANCHI  
Platinum Rated  
IGBC\*\*

infinity  
Greens  
RANCHI  
Gold Rated  
IGBC\*\*

Under Construction Green Space Approx 4.5 million Sq. Ft.

## SOME OF OUR CORPORATE SOCIAL RESPONSIBILITIES

