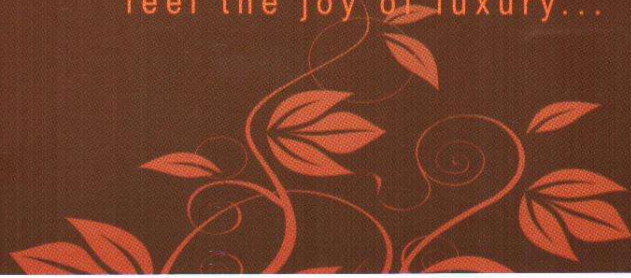




卐 RIDDHI SIDDHI 卐

feel the joy of luxury...





Location Plan



RIDDHI SIDDHI

Builder & Developer

RIDDHI SIDDHI PROPCON (P) LTD.

B-10, JDA Staff Colony, Adj. NRI Colony, Prapat Nagar, Jaipur

For Booking Contact

MUKESH GUPTA RUPESH GUPTA
9829052853 9414047193

Architects

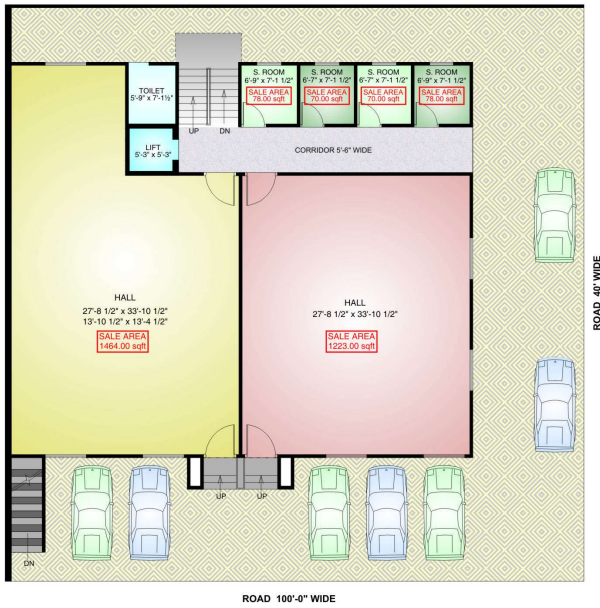
Space Grid

C-49, Vidya Apartment, Paras Marag
Bapu Nagar, Jaipur
9314918766, 9314510603

Builders & Developers reserve the right to change any design & specification of the building without any prior notice or information.
This brochure is for illustration purpose only & cannot in any way be treated as a legal document.

Design Syndicate 9829117986

GROUND FLOOR PLAN



TYPICAL FLOOR PLAN

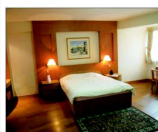


Specifications

- RCC Roof slab as per design
- Boring with submersible pumpset
- Flush doors finished with polish
- Main door with veneer finish and polish
- Door/Window frames with provision for wire mesh
- Teakwood windows with glass
- Vitrified / Marble flooring with granite finish
- Semi Modular Kitchen with granite platform & SS sink
- Standard sanitary ware & CP fittings

Features

- 2/3 BHK Units • Best Quality Workman Ship • JDA Patta • Located on 100' Wide Road
- Developed Colony • Reasonable Price • Designed by well known Architects



- Interior finish with POP & premium quality paint & distemper
- Ceiling decorate with POP cornice & beading in drawing, dining & all bedrooms
- Premium quality glazed tiles in toilets & kitchen
- Exterior finish with roller texture
- Electrical fittings with ISI mark wire & modular switches
- Provision for geyser points
- Provision for TV & telephone

Specifications