

*Nurture  
your  
living*



  
**GREEN VIEW**  
*Blossom*  
Nurture your living

1/2/3 BHK LUXURY APARTMENT IN DEHRADUN



## ABOUT THE PROMOTERS

Realty is what runs in our veins. Having established in 1998, the company within a short span of time has carved a niche for itself and has emerged as a name to reckon with in the field of real estate. Its footprints can be seen as residential complexes in Delhi NCR's (Vaishali & Kaushambi) & group housing in Dehradun's posh localities such as "Silver Rock Apartments" at Curzon road, "Green View Apartments" & "Green View Residency" at Sahastradhara road amongst others and **Green View Height** Raj Nagar Extension, Ghaziabad, (U.P.)

Apart from residential complexes, **GAV Group** has also been the name behind "Hotel Silver Rock" in Mussoorie. Being a growing real estate enterprise, **GAV Group** is ever vigilant to explore new opportunities. Having its forte in affordable luxury segment it seized upon the opportunity that Raj Nagar Ext. (GZB) offered and has come up with 200 apartments complex by the name of "Green View Heights" along with this company going to launch **"Affordable Housing And Senior Citizen Homes"** with all modern facilities very soon at Haridwar.

What has led the company to the forefront is its commitment towards quality and timely delivery. Adding to its success is the goodwill **GAV Group** has generated from its customers, whose word of mouth publicity has gone a long way in establishing the reputation of the company. Undoubtedly **GAV Group** stand for "Commitment to Customers". The company is sure to scale new heights of success and come up with one more super-hit project "Green View Blossom".

### DELIVERED PROJECTS



Green View Apartments  
Raj Nagar Extension



Silver Rock Apartments  
Curzon Road - Dehradun



Hotel Silver Rock  
Mussoorie



Green View Apartments  
Sahastradhara Road - Dehradun



Green View Residency  
Sahastradhara Road - Dehradun

### UPCOMING PROJECTS

Senior citizen homes  
with all ultra  
modern facilities  
at Haridwar

Affordable  
Housing in  
Haridwar

## ABOUT THE PROJECT

Designed at par with international standards, constructed using latest technologies and embellished with utmost care, at **Green View Blossom** you discover pure unadulterated joy. Today, tomorrow and forever. Situated at one of the most stunning locations of Dehradun it makes for an ideal pick both for living as well as investment.

It's an abode of tranquility. Green View Blossom not just offers a luxurious abode but will also fill your life with serenity and uninterrupted joy. The interiors are beautifully decked and features modern and stylish fixtures and plumbing. The sheer grandeur of it will fill you with awe while at the same time offering a cosy home made just for you and your family.

The facilities and amenities are in a class of their own. Truly upscale life at Green View Blossom is akin to 5 Star living that also combines the best of resort like lifestyle. So you not only have a panoramic vista to while away your time but with amenities such as splash pool, gym, clubhouse and sporting facilities assures you of a life that is filled with happiness.

Homes that will take your breath away. Literally. Epitomising fine living, Green View Blossom is a sprawling complex designed aesthetically. Surrounded by beautifully landscaped surroundings it carries the theme of nature even inside the house and in the process giving you a home that is open, permits the flow of natural breeze and has ample natural light.

Low population density area

Approx 70% Open Area

Wide road with green planted roadways

24x7 power back-up for essential service

Manned entry and exits

2 High Speed Lifts for each blocks

Unmatched location advantages with all utility points in close vicinity

3 tier 24x7 Security System

Ample parking space

Project approved by MDDA

Modern of Fire Fighting System

Elegant elevation & Design

External Development including sewer (STP) & underground water tank

Vastu & Eco friendly



# GREEN VIEW Blossom

Nurture your living

1/2/3 BHK LUXURY APARTMENT IN DEHRADUN

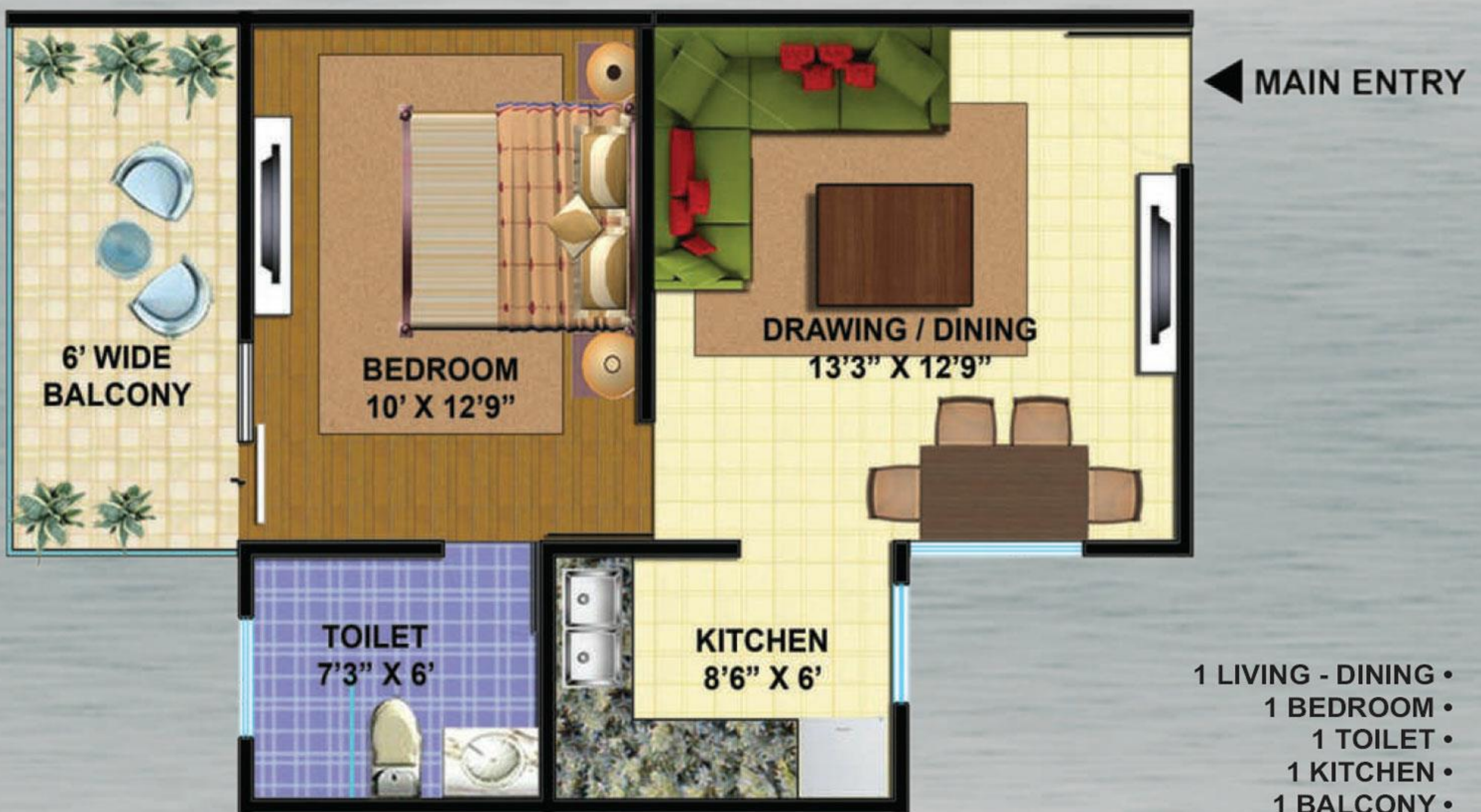


**STUDIO APARTMENT TYPE-9**  
**SUPER AREA 450 SQ.FT.**

- STUDIO ROOM
- 1 KITCHEN
- 1 TOILETS
- 1 BALCONIES



**1 BHK TYPE-11**  
**SUPER AREA 700 SQ.FT.**



- 1 LIVING - DINING
- 1 BEDROOM
- 1 TOILET
- 1 KITCHEN
- 1 BALCONY

**2 BHK TYPE-10  
 SUPER AREA 1050 SQ.FT.**



- 1 LIVING - DINING
- 2 BEDROOMS
- 1 KITCHEN
- 2 TOILETS
- 1 BALCONY

**2 BHK TYPE-7  
 SUPER AREA  
 1150 SQ.FT.**



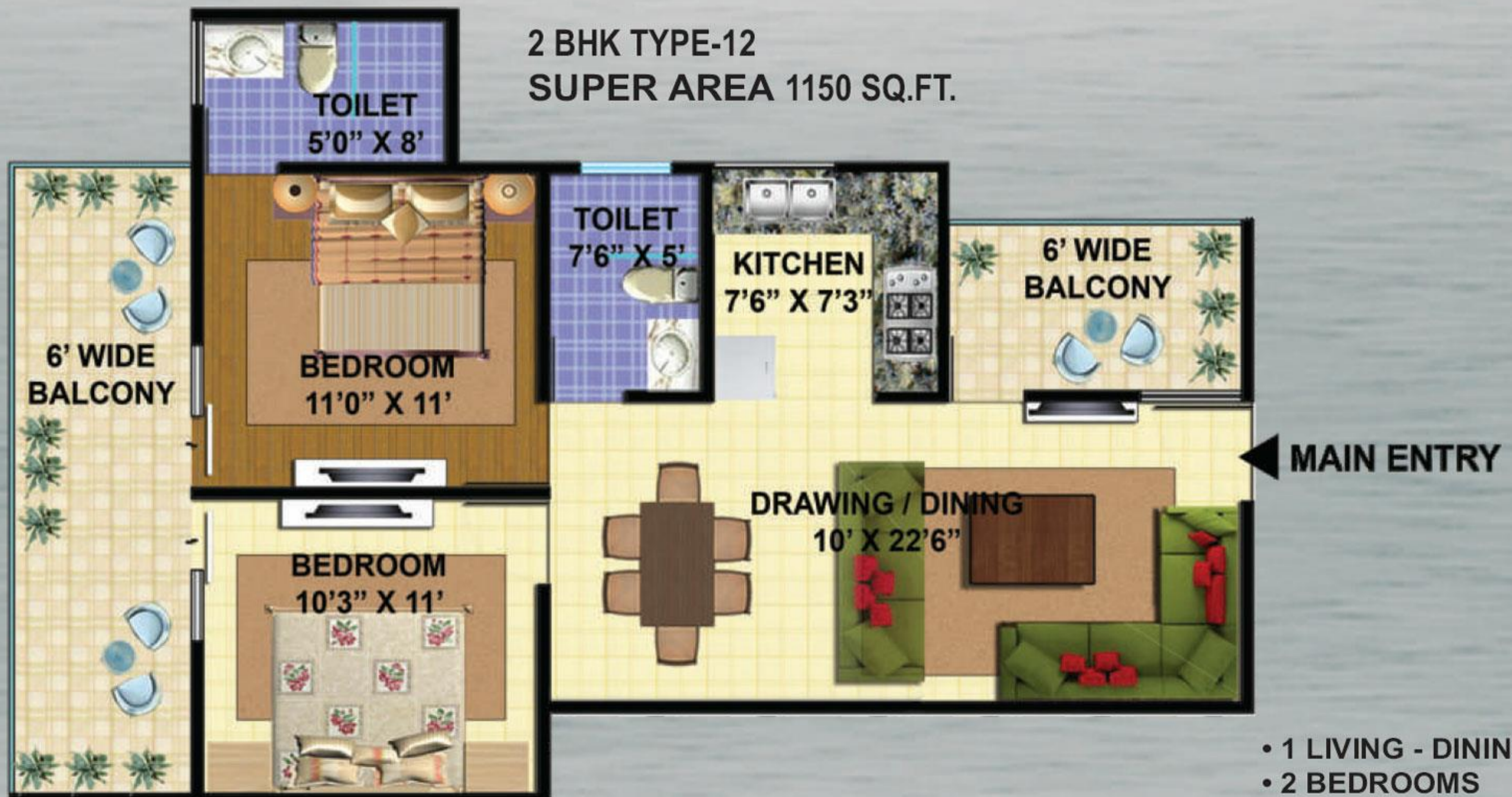
- 1 LIVING - DINING
- 2 BEDROOMS
- 1 KITCHEN
- 2 TOILETS
- 3 BALCONIES

**2 BHK TYPE-8**  
**SUPER AREA 1150 SQ.FT.**



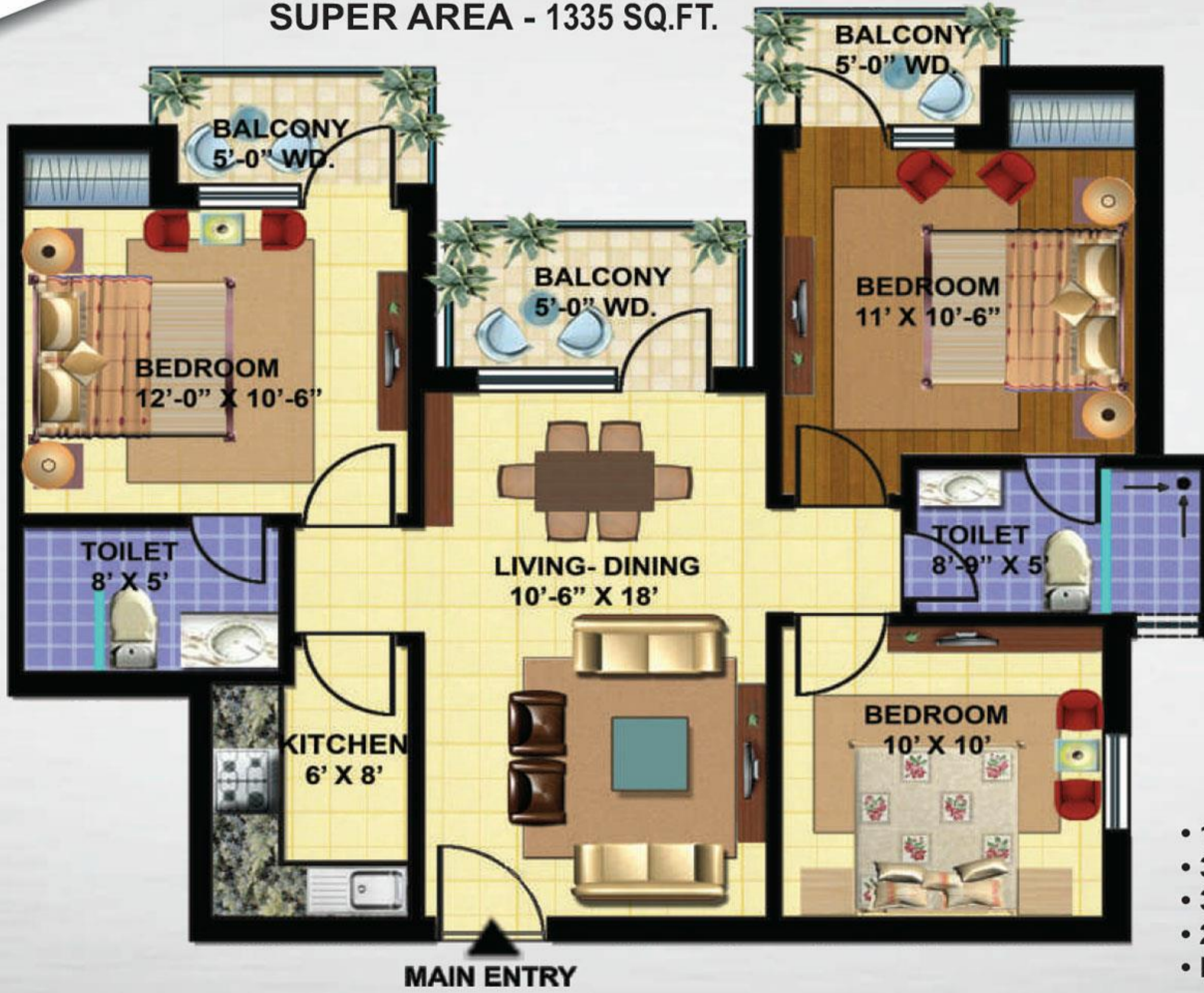
- 1 LIVING - DINING
- 2 BEDROOMS
- 1 KITCHEN
- 2 TOILETS
- 1 BALCONY

**2 BHK TYPE-12**  
**SUPER AREA 1150 SQ.FT.**



- 1 LIVING - DINING
- 2 BEDROOMS
- 1 KITCHEN
- 2 TOILETS
- 2 BALCONIES

**3 BHK TYPE-1  
 SUPER AREA - 1335 SQ.FT.**



- 1 LIVING - DINING
- 3 BEDROOMS
- 3 BALCONIES
- 2 TOILETS
- KITCHEN

**3 BHK TYPE-6  
 SUPER AREA  
 1335 SQ.FT.**



- 1 LIVING - DINING
- 3 BEDROOMS
- KITCHEN + UTILITY
- 2 TOILETS
- 2 BALCONIES



**3 BHK TYPE-2 (A)  
 SUPER AREA  
 1460 SQ.FT.**



- 1 LIVING - DINING
- 3 BEDROOMS
- 2 BALCONIES
- 2 TOILETS
- 1 KITCHEN

**3 BHK TYPE-2 (B)  
 SUPER AREA  
 1460 SQ.FT.**



- 1 LIVING - DINING
- 3 BEDROOMS
- 3 BALCONIES
- 2 TOILETS
- KITCHEN

**3 BHK TYPE-5  
SUPER AREA  
1600 SQ.FT.**



MAIN ENTRY

- 1 LIVING - DINING
- 3 BEDROOMS
- KITCHEN + UTILITY
- 2 TOILETS
- 3 BALCONIES

**3 BHK + STORE TYPE-3 (A)  
SUPER AREA 1810 SQ.FT.**



MAIN ENTRY

- 1 LIVING - DINING
- 3 BEDROOMS
- 3 BALCONIES
- 3 TOILETS
- KITCHEN
- STORE

**3 BHK + STORE TYPE-3 (B)  
 SUPER AREA 1810 SQ.FT.**



- 1 LIVING - DINING
- 3 BEDROOMS
- 3 BALCONIES
- 3 TOILETS
- KITCHEN
- STORE

**3 BHK + SERVANT TYPE-4  
 SUPER AREA 1990 SQ.FT.**



- 1 LIVING - DINING
- 3 BEDROOMS
- KITCHEN + UTILITY
- 3 BALCONIES
- 3 TOILETS
- SERVANT + ATTACH TOILET

## SPECIFICATIONS

### STRUCTURE

Earthquake resistant RCC frame structure. WALL FINISH : Elegant POP finishes with acrylic emulsion

### FLOORING

Living / dining, bedrooms and kitchen adorned with vitrified tiles, master bedroom with wooden / vitrified. Anti skid ceramic tiles on toilet floors & glazed ceramic toilet walls.

### KITCHEN

Contemporary modular kitchen with chimney, granite counter top with stainless steel sink and drainage. WALL : Clay chimney dried bricks / fly ash bricks / blocks.

### ELECTRIFICATION

FITTING : Modular electrical switches and plates (Philips/L&T/ABB or Equivalent) ISI fittings & MCB.  
 WIRING : All electrical wiring in concealed conduit with ISI copper wire.  
 ELECTRIC FITTING : Geyser, Tube Lights, Fans

### ELEVATORS

8 Passenger KONE /OTIS / Thyssenkrupp or equivalent. Intercom facility. One elevator with deep car stretcher.

### TOILETS

PLUMBING FITTING : Branded fittings like Jaquar/ Parko/ equivalent all toilets.  
 SANITARY FITTINGS : WC Parryware / Hindware or equivalent in all toilets.

### DOORS AND WINDOWS

DOORS : All doors are wooden frame with both sides laminated flush door shutters. WINDOWS : UPVC three track sliding windows with clear glass and provision of mosquito nets.

### POWER BACK-UP\*

Diesel generator back-up.  
 EPABX.





## LEGENDS :

1. PLANTING BED
2. RAMP ENTRY
3. PLANTING BED TYPE-2
4. BUILDING BLOCK
5. CORE
6. 1.0 M WD. PATHWAY
7. PLANTING BED TYPE-3
8. LANDSCAPE GREEN
9. 3.6 M WD. FIRE TENDER PATHWAY
10. COMMERCIAL USE
11. RAMP EXIT
12. HARD PAVED AREA
13. GUARD ROOM
14. ELECTRIC ROOM
15. CHILDREN'S PLAY ZONE

### BLOCK A

- TYPE - 4 3 BHK + SERVANT = 1990.00 SQ.FT.
- TYPE - 5 3 BHK = 1600.00 SQ.FT.
- TYPE - 6 3 BHK = 1335.00 SQ.FT.

### BLOCK B

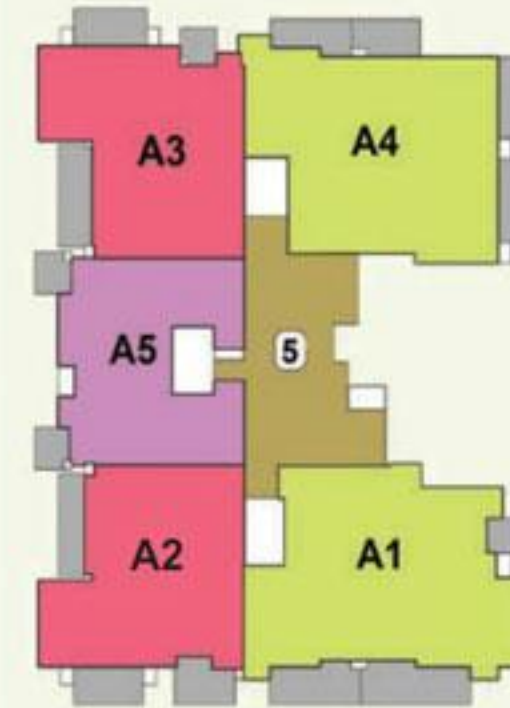
- TYPE - 1 3 BHK = 1335.00 SQ.FT.
- TYPE - 2(A) 3 BHK = 1460.00 SQ.FT.
- TYPE - 2(B) 3 BHK = 1460.00 SQ.FT.
- TYPE - 3(A) 3 BHK + STORE = 1810.00 SQ.FT.
- TYPE - 3(B) 3 BHK + STORE = 1810.00 SQ.FT.

### BLOCK C

- TYPE - 7 2 BHK = 1150.00 SQ.FT.
- TYPE - 8 2 BHK = 1150.00 SQ.FT.
- TYPE - 9 STUDIO APARTMENT = 450.00 SQ.FT.
- TYPE - 10 2 BHK = 1050.00 SQ.FT.
- TYPE - 11 1 BHK = 700.00 SQ.FT.
- TYPE - 12 2 BHK = 1150.00 SQ.FT.

## KEYPLAN:

### BLOCK A



### BLOCK B



### BLOCK C





Complete Solutions of Luxurious Life

## GAV DEVELOPERS (P) LTD.

(Formerly Known as GRAH AVAS VIKAS (P) LTD.)

CORPORATE OFFICE : SECTOR-5, PLOT NO-661, VAISHALI GHAZIABAD, (U.P.) PH: +91-9899950373

SITE OFFICE : GREEN VIEW BLOSSOM, MAIN SAHASTRADHARA ROAD,  
NEAR I.T. PARK, DEHRADUN, UTTARAKHAND PH: +91-8881122999

SMS : GAV TO 56677

WEBSITE : [www.gavindia.com](http://www.gavindia.com)

E-MAIL : [sales@gavindia.com](mailto:sales@gavindia.com)