

Luxury homes for a curiously  
peaceful existence



*Hh Aa Rr Mm Oo Nn Yy*  
N I R V A N A C O U N T R Y

GURGAON



# HARMONY AT NIRVANA COUNTRY



Harmony; the name says it all. These apartments are placed within a setting of pristine natural beauty. With 80% of the land as open and green space, every bit has been designed to restore within you and your family that inner harmony we all seek, which is next to impossible to find in a city. Harmony; it's yours for the asking!

### Features

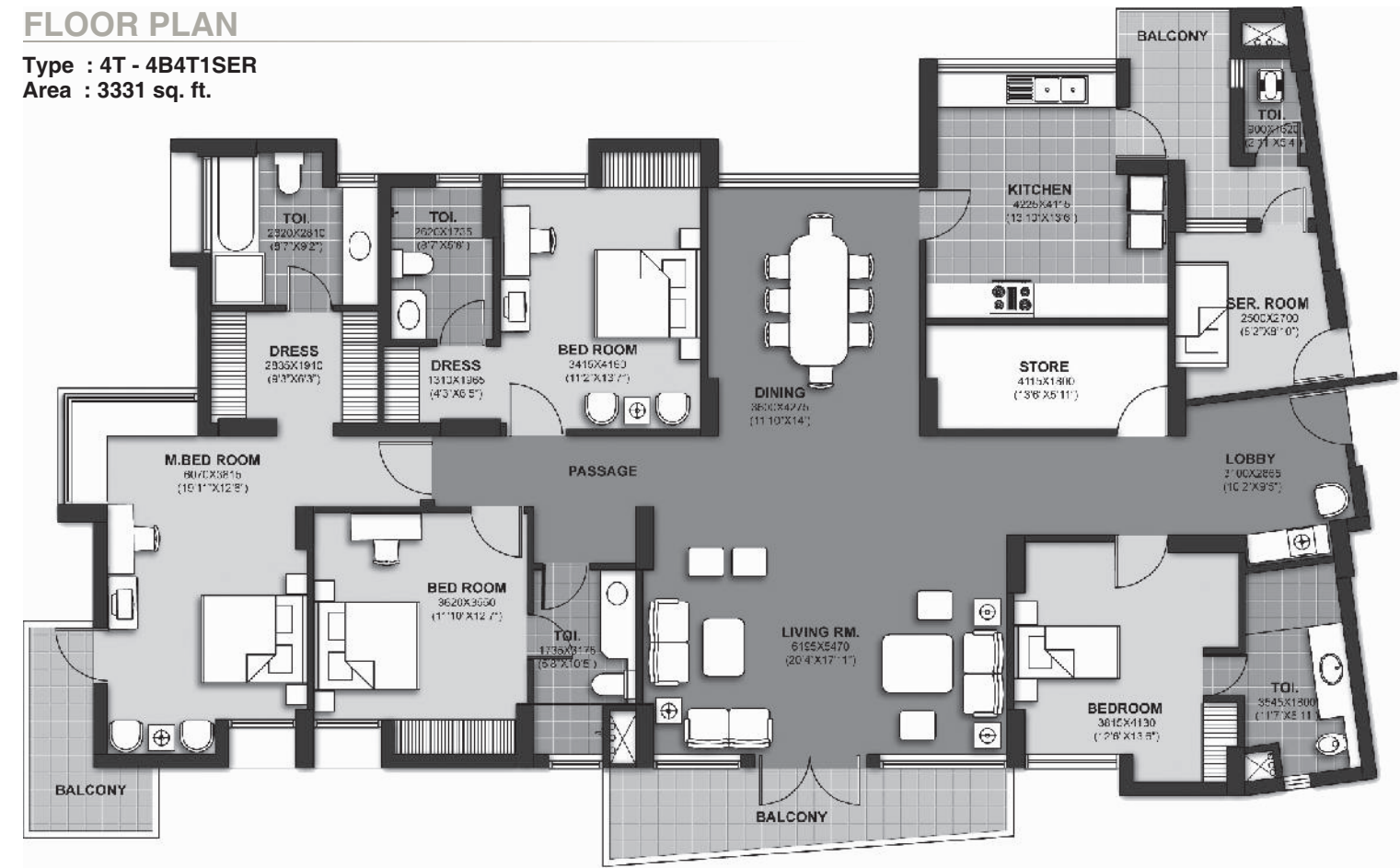
- Fitted modular kitchens and split unit air-conditioning in every room
- 100% power back up
- 24 x 7 gated security along with door phones
- Tennis courts
- Basketball courts
- Kids play zones
- State-of-the-art club with all facilities
- Landscaped greens

### PROJECT DETAILS

Area in acres	:	10.57
No. of Units	:	340
Max. Height	:	Ground + 18
Type	:	2, 3 and 4 bedroom apartments
Size	:	1724 sq. ft. - 3331 sq. ft.
Architects	:	Mani Chowfla Architects

## FLOOR PLAN

Type : 4T - 4B4T1SER  
Area : 3331 sq. ft.



Other apartment options available:

4B	4B4T1S	3331 sq. ft.	4A	4B4T1S	3329 sq. ft.	3G4	3B3T1S	3150 sq. ft.	3C	3B3T1S	2699 sq. ft.
3A	3B3T1S	2680 sq. ft.	3T	3B3T1S	2680 sq. ft.	3G1	3B3T1S	2644 sq. ft.	3D	3B3T1S	2628 sq. ft.
3B	3B3T1S	2599 sq. ft.	3G2	3B3T1S	2534 sq. ft.	3G3	3B3T1S	2472 sq. ft.	3F	3B3T1S	2471 sq. ft.
3E	3B3T1S	2467 sq. ft.	2B	2B2T	1759 sq. ft.	2A	2B2T	1742 sq. ft.	2G	2B2T	1724 sq. ft.

## MASTER PLAN



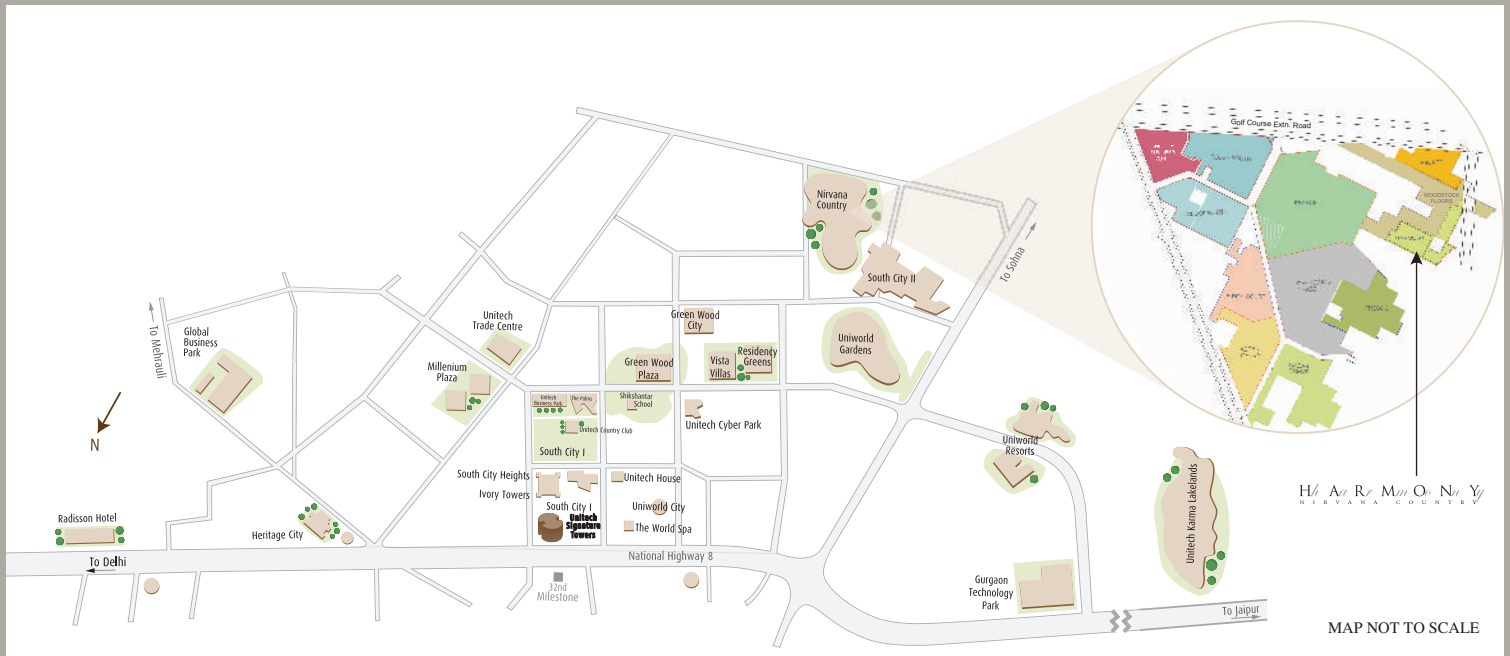
## PROJECT SPECIFICATIONS

Wall finish	Internal External Servant Room	Acrylic emulsion paint / ceiling in distemper Combination of stone and textured paint Painted in oil bound distemper
Flooring	Living / Dining Bed Rooms Servant Room	Imported marble Laminated wood flooring Ceramic tiles
Kitchen	Flooring Dado Platform	Fully fitted modular kitchen with refrigerator, oven, hob and chimney Ceramic tiles Granite above counter / ceramic tiles on non-counter walls upto 1500mm above floor Granite counter with twin bowl stainless steel sink drain board and CP fittings
Toilets	Flooring Dado Fittings	Ceramic tiles Ceramic tiles up to ceiling level Granite / marble counter, white ceramic fixtures & CP fittings, geysers, jacuzzi in master bedroom toilet, shower stall in all toilets
Doors		Seasoned hardwood frames with European style moulded shutter
Windows		Powder coated / Anodized aluminum
Green Area		Children's park, event lawn, picnic garden, kick-about area, exercise garden, play courts
Electrical		Copper wiring and MCBs
Infrastructure		Provision for cable T.V.
Building		Sufficient car parking facility per apartment, earthquake resistant RCC framed construction
Security		Door phone
Power back-up		100%

All floor plans, sitemap, specifications, amenities, facilities and perspective views are tentative in nature and are subject to revision.



# LOCATION MAP



## THE PROMOTERS



Unitech is one of India's leading real estate developers reputed for its fine design & construction. Its corporate philosophy is built on trust and commitment. Since its inception in 1972, Unitech Ltd. has come a long way turning many a barren land into landmarks. The first winner of the ISO 9001:2000 certification in north India, Unitech has created cutting edge residential complexes.

Unitech's efforts in establishing world-class standards and quality in real estate development have been highly appreciated. Spreading its wings across the nation, Unitech has made its presence felt in Delhi, Gurgaon, NOIDA and Greater Noida, Bangaluru, Kolkata, Lucknow, Mumbai, Chennai, Varanasi, Hyderabad, Mohali and Agra.



A part of the Kolkata based Periwal Group, Pioneer Urban Land & Infrastructure Ltd. develops both residential and commercial complexes. Today it is the name behind some of the most successful real estate projects in the NCR.

Unitech Ltd. & Pioneer Urban Land & Infrastructure Ltd. have together brought some marvelous residential projects in NCR, like Vista Villas, Greenwood City, South City-II & Nirvana Country.

**unitech**<sup>®</sup>

