



**dynasty**



*gateway to royal living*



Swimming pool  
Hi-tech Gymnasium  
Yoga Centre  
Billiards & Pool



Prized location  
Modern finishes  
Ample parking  
Total security

270 luxury apartments  
1 / 2 / 3 BHK  
  
Ultra luxury penthouses  
3 / 4 BHK



Spa & massage lounge  
Indoor sports arena  
Landscaped garden  
Day care centre



you live only once, so live it exclusively

come face to face  
with the finest in luxury

*Choosing between nature and modernity can be rather difficult. Not anymore.*

*Every inch of land at Dynasty gives you the sense of space with much grandeur and style. Dynasty has something to offer to those desirous of living at places which offer fantastic views & a feeling of being above all & sundry. While Dynasty provides you with a fast paced modern apartment lifestyle, it is a place that breathes of divine tranquility making the place a joy for living.*

*A space that aspires for the comfort and sophistication of international standards of living with state of the art infrastructure facilities.*





*dynasty*

*An address  
that will be  
your pride and  
others' envy...*



*Dynasty is a home that its' occupants would be truly proud to own. Homes that are an expression of their true selves, their personalities and preferences, their aspirations and expectations. Homes vibrant with the spirit of well being and the zest for good living. Homes that include virtually every feature the owner would wish to have and carefully preclude those that he wouldn't.*

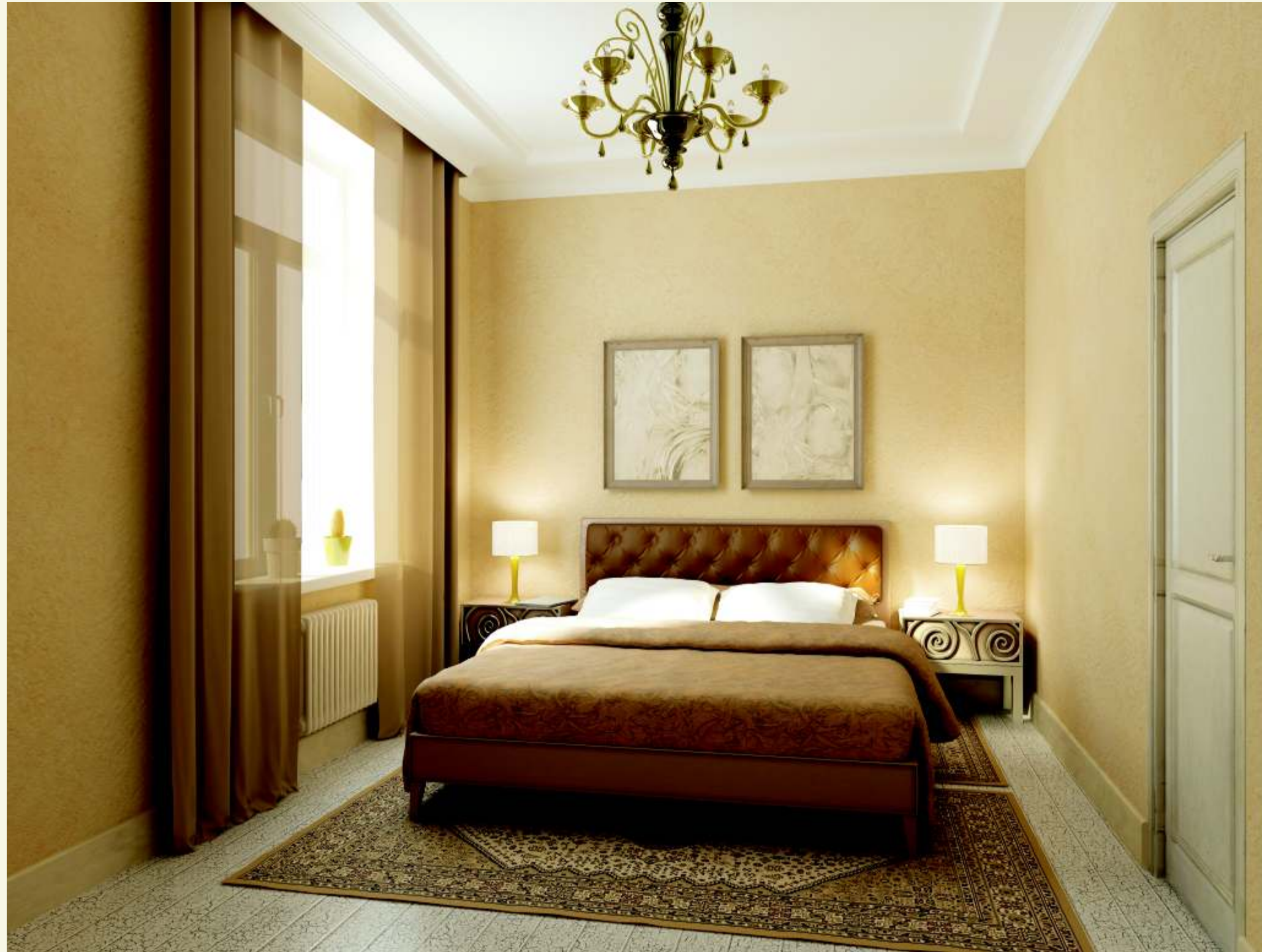


an inspiration to live life full circle

*Apartments that offer generous living spaces, which spill seamlessly from inside into the outdoors. Walk pass your private parking space for the cars and step into your apartment. Make your way towards the elegantly designed living room overlooking the balcony. Sip your daily morning tea as the cool breeze ushers into your room.*

*Spacious, yet warm and inviting, it is the perfect place to entertain family and friends or relax after a tiring day. Share special mealtimes in the perfectly placed dining room flanked by an open kitchen area, fitted with attractive granite counters and extensive workspace.*





*All the three bedrooms are bright, airy, welcoming and bathed in natural sunlight. Rest and recharge in the enviable master bedroom, with its impeccable design and large windows with a private balcony to bask in the sun. Pamper yourself at your personal space and en-suite bath facilities. Sit back and sip your morning cup of tea in your private balcony or the terrace overlooking the greens.*

an invitation to relish the comfort and warmth



*While you discover optimal natural lighting and fresh air ventilation, you also witness a home that will never endure a power cut or water crisis and find multi-tier security that keeps your children safe and the risks out. Generous landscaped greens are a delight to relax in. Complete support facilities from shopping to leisure. Dynasty apartments come attached with all these and more.*



dynasty

explore the world within



Baby day care centre



Polyclinic with path lab & medical assistance



Multi-purpose club



convenience shopping



Lush green landscaping



Temple

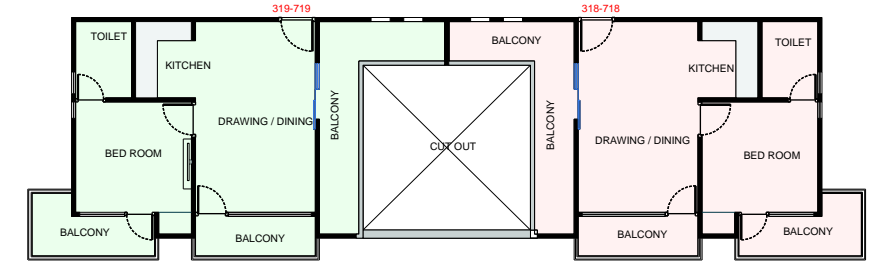


Kids play area with equipment

an indulgence you would love to have

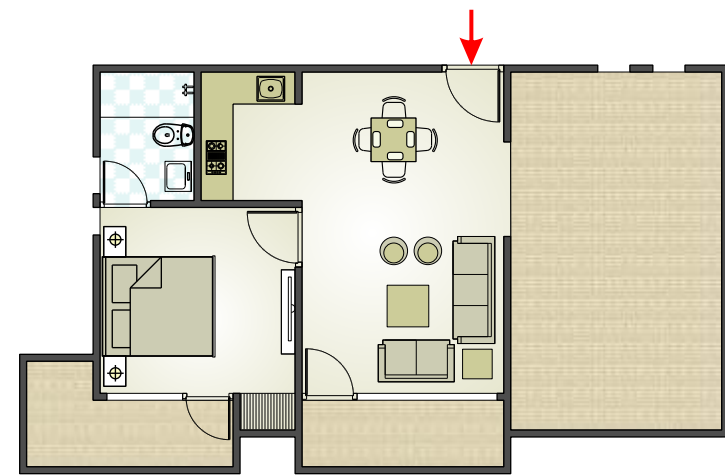


	FLAT NO.	201-701	202-702	203-703	204-704	205-705	206-706	207-707	208-708	209-709	210-710	211-711	212-712	213-713	214-714	215-715	216-716	217-717	218-718	219-719	220-720	221-721	222-722	223-723	224-724	225-725	226-726	227-727	228-728	229-729	230-730	231-731
3 BHK	TYPE	3BHK	3BHK	3BHK	2BHK	2BHK	2BHK	2BHK	2BHK	2BHK	2BHK	2BHK	2BHK	2BHK	3BHK	3BHK	3BHK	1BHK	1BHK	1BHK	2BHK	2BHK	2BHK	2BHK	2BHK	2BHK	2BHK	2BHK	2BHK	2BHK	3BHK	3BHK
2 BHK	SALEABLE AREA (Sq. Ft.)	1300.00	1300.00	1300.00	930.00	930.00	930.00	930.00	930.00	930.00	930.00	930.00	930.00	930.00	1300.00	1300.00	1300.00	645.00	645.00	645.00	930.00	930.00	930.00	930.00	930.00	930.00	930.00	930.00	930.00	1300.00	1300.00	
1 BHK																																



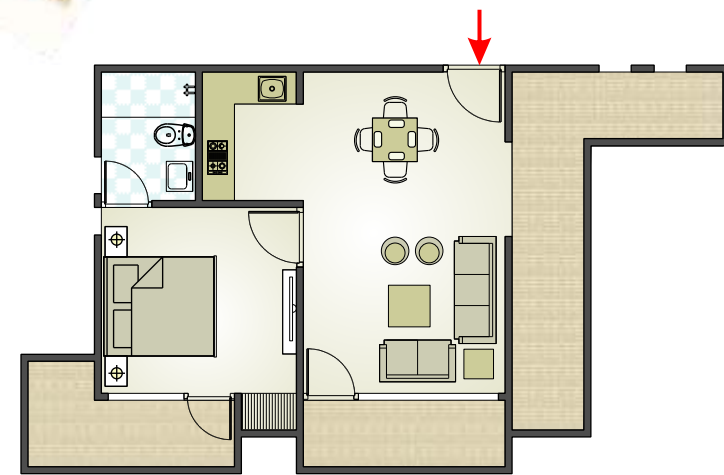
Typical floor (1st - 7th)  
Penthouse (8th & 9th)



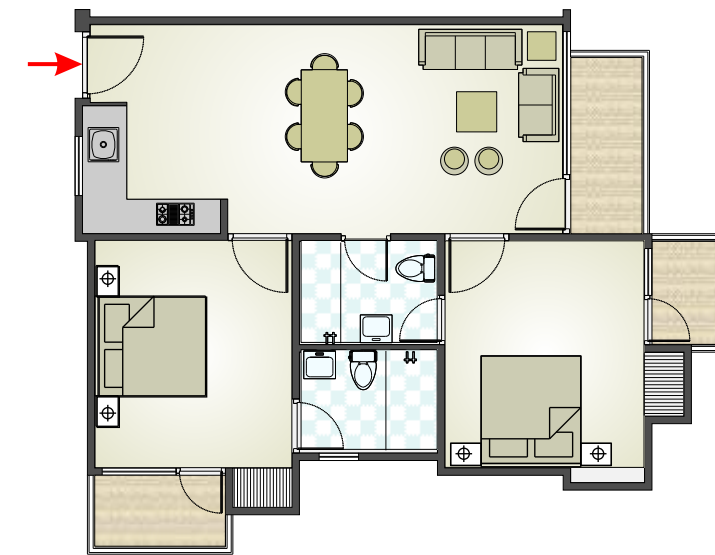


**1 BHK Type A)**  
Super Built Up Area =815.00 Sq.ft

A	DRAWING / DINING	11'-0" X 21'-3"
B	BED ROOM	10'-7½" X 10'-1½"
C	KITCHEN	5'-6" X 7'-0"
D	TOILET	5'-1½" X 7'-0"
E	BALCONY	11'-9" X 4'-0"
F	BALCONY	12'-0" X 4'-0"
G	BALCONY	19'-6" X 4'-0"

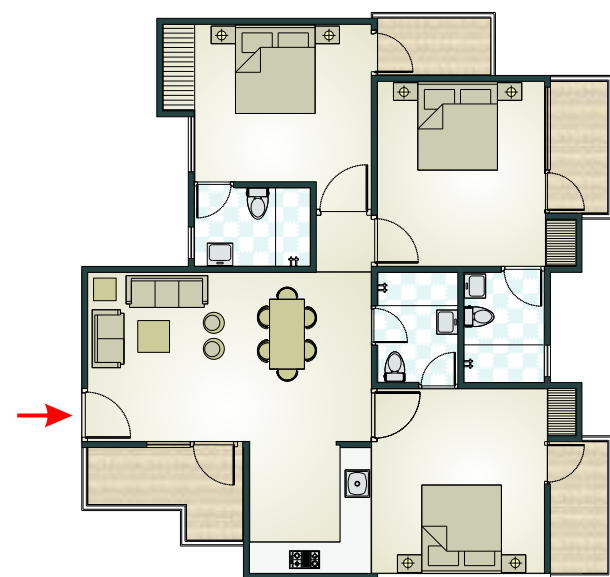


**1 BHK (Type B)**  
Super Built Up Area =645.00 Sq.ft



A	DRAWING / DINING	10'-7½" X 17'-0"
B	BED ROOM	11'-6" X 10'-0"
C	BED ROOM	11'-6" X 10'-1½"
D	KITCHEN	6'-6" X 7'-0"
E	TOILET	5'-1½" X 7'-0"
F	TOILET	5'-3" X 7'-0"
G	BALCONY	6'-1½" X 4'-0"
H	BALCONY	8'-7½" X 4'-0"
I	BALCONY	9'-3" X 4'-0"

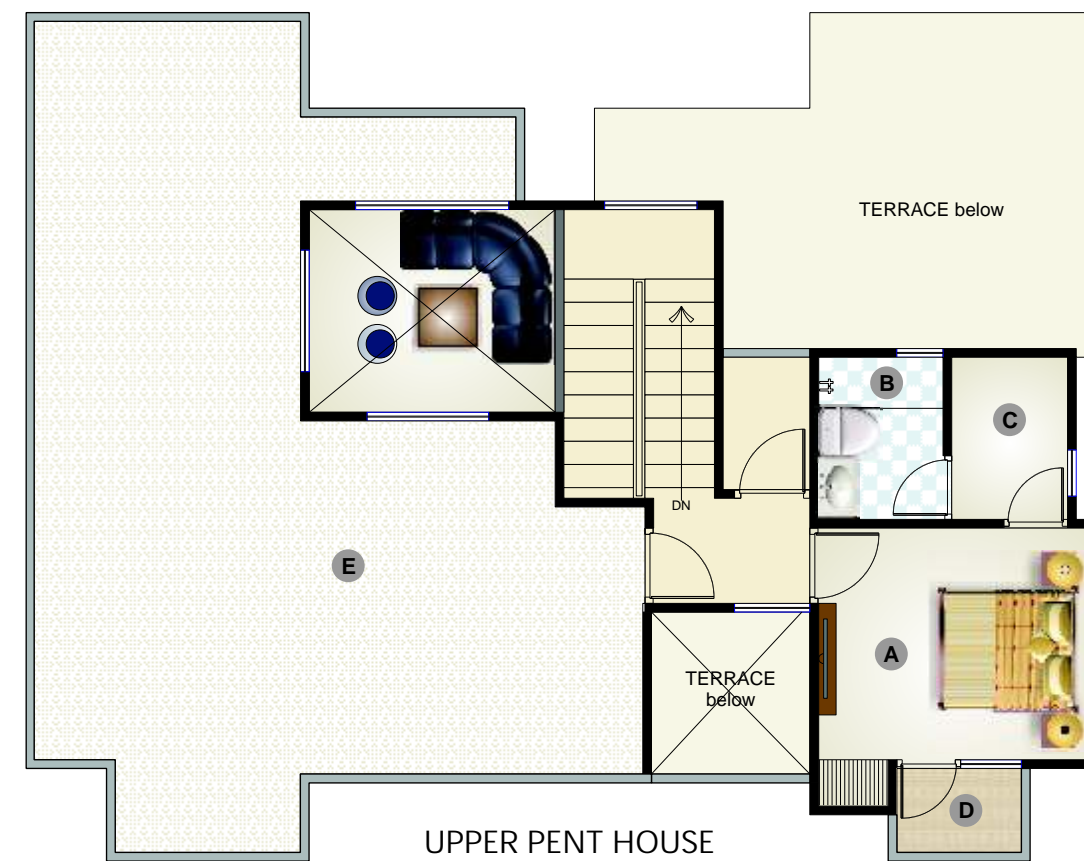
**2 BHK**  
Super Built Up Area =930.00 Sq.ft



A	DRAWING / DINING	11'-0" X 21'-3"
B	BED ROOM	10'-7½" X 10'-1½"
C	BED ROOM	10'-7½" X 11'-9"
D	BED ROOM	11'-6" X 10'-1½"
E	KITCHEN	7'-9" X 8'-0"
F	TOILET	5'-1½" X 7'-0"
G	TOILET	5'-1½" X 7'-0"
H	TOILET	5'-1½" X 7'-1½"
I	BALCONY	12'-0" X 4'-0"
J	BALCONY	11'-9" X 4'-0"
K	BALCONY	9'-1½" X 4'-0"
L	BALCONY	8'-7½" X 4'-0"

3 BHK

Super Built Up Area = 1300.00 Sq.ft



UPPER PENT HOUSE

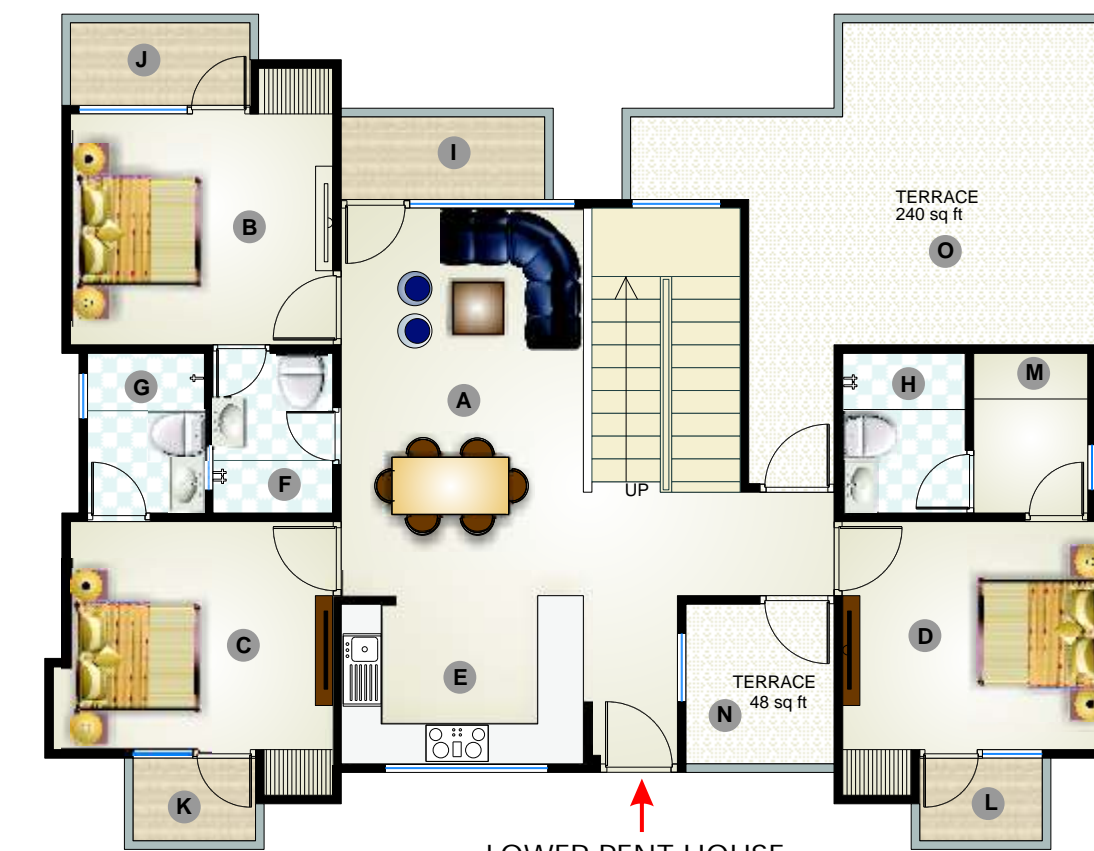
A	BEDROOM	11'-6" X 10'-0"
B	TOILET	5'-4½" X 7'-0"
C	DRESS	5'-0" X 7'-0"
D	BALCONY	6'-1/2" X 4'-0"
E	TERRACE	680 sq ft

A	DRAWING / DINING	10'-7½" X 17'-0"
B	BED ROOM	11'-6" X 10'-0"
C	BED ROOM	11'-6" X 10'-0"
D	BED ROOM	11'-6" X 10'-0"
E	KITCHEN	10'-6" X 7'-0"
F	TOILET	5'-3" X 7'-0"
G	TOILET	5'-1½" X 7'-0"
H	TOILET	5'-4½" X 7'-0"
I	BALCONY	9'-3" X 4'-0"
J	BALCONY	8'-7½" X 4'-0"
K	BALCONY	6'-1/2" X 4'-0"
L	BALCONY	6'-1/2" X 4'-0"
M	DRESS	5'-0" X 7'-0"
N	TERRACE	48 sq.ft
O	TERRACE	240 sq.ft.

4 BHK PENT HOUSE

Super Built Up Area = 2020.00 Sq.ft

Terrace Area = 968.00 Sq.ft



LOWER PENT HOUSE

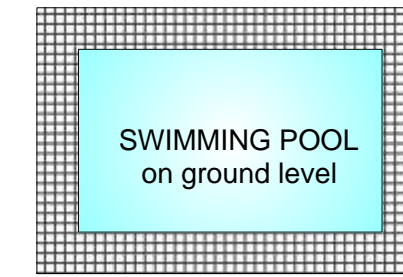
# club house



pamper your lifestyle  
with a new attitude...

*It is your choice whether you would like to unwind and relax after a hectic day, by sweating out at the high-tech gymnasium or playing a round of snooker or simply converse lazily with your friends over a cup of coffee at the modern clubhouse. With hoards of amenities, you have yet another opportunity to spend quality time with yourself and your loved ones. A perfect setting to start as well as end your day with a feeling of contentment of an accomplished life. So wrap yourself in complete luxury and amplify your life.*

- Swimming pool
- Kids splash pool
- Hi-tech Gymnasium
- Yoga Centre
- Billiards & Pool
- Spa & Massage
- Lounge
- Indoor sports arena
- landscaped garden
- kids play zone
- Banquet hall



CLUB HOUSE (Basement)





**FLOOR**  
Vitrified tiles in all rooms &  
Anti skid ceramic tiles in toilets



**ELECTRICAL**  
Modern electrical system with concealed fire resistant copper wiring, modular switches, indoor MCB unit, indoor washing machine point, telephone and AC power points in all rooms



**WALLS FINISHES**  
POP finish with premium distemper



**KITCHEN**  
Semi modular kitchen, granite counter top, stainless steel sink, provision for purifier, geyser, exhaust fan



**DOORS**  
Designer main door & premium flush door



**TOILETS**  
Premium CP fittings, water mixture shower, provision for geyser, exhaust fan, Designer tiles up to 7 ft. height



**WINDOWS**  
Aluminum framed glass windows



**BALCONIES**  
Spacious, well lit and airy balconies with all rooms

## specifications & features

### DAY CARE CENTRE / CRECHE

An upscale day care and activity centre for the little kids

### STRUCTURE

Earthquake resistant RCC structure as per seismic zone II

### SECURITY

24 hrs security with CCTV surveillance and visitors' record

### BACK-UP

100% power back-up for common areas and elevators

### PARKING

Separate reserved parking for residents and visitors on ground level

### POLYCLINIC & PATH LAB

A renowned polyclinic with medical assistance

### WATER HARVESTING

Water harvesting system as per rules

### FIRE FIGHTING

State of the art Fire fighting system

### ELEVATORS

6 high speed eight passenger elevators

### EXTERIORS

Elegant exterior with weather proof exterior paint



*Arihant Shivank group, driven by the vision and commitment to contribute comprehensively to the skyline of Jaipur city, have already been acknowledged by the industry as well as the citizens for their timely and effective completion of projects. Arihant Shivank group is totally geared up to provide all kind of real estate solutions under one roof.*

*Today Arihant Shivank group is scaling new heights under the staunch leadership and innovative ideas of its key promoters - Mr. Rakesh Goyal and Mr. Umesh Gupta, who are supported by the most competent team of young and aspiring individuals.*

*The group is confident to establish a national leadership position in all areas of its business by adhering to the social, legal, environmental and ethical norms and thereby transforming the quality of life of the society at large.*

*Arihant Shivank group's commitment to provide highest standards of professionalism and quality services is reflected in every minutest detail of its working. It lays strong emphasis on the aesthetic and functional elements of its project design. The group believes in delivering spaces of high value that make a difference in the quality of lifestyle at all the strata of society.*



Vedang Heights  
Near NRI Colony, Pratap Nagar, Jaipur



Arihant Homes  
Vaishali Nagar, Jaipur



Shivank Infotech City  
Balawala, Sanganer, Jaipur



Coral Arihant Heights  
Ramsinghpura, Mansaroovar, Jaipur



Arihant Shivank  
Haldiya Heights  
Near Mahatama Gandhi Hospital,  
Jagatpura, Jaipur



Arihant Banker's Enclave  
Vatika, Sanganer, Jaipur



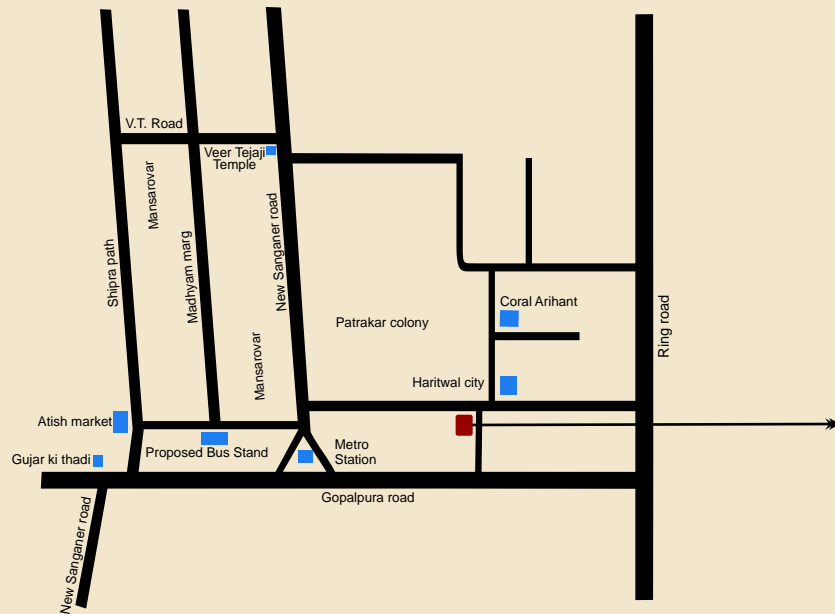
Samridhi Villas  
Jaisinghpura, Ajmer Road, Jaipur



Palace of Jaipur  
The Royal Villas  
Behind Chokhi Dhani, Tonk Road, Jaipur



Gateway of Jaipur  
(Integrated Township)  
Jaisinghpura, Ajmer Road, Jaipur



Ramsinghpura, Near Patrakar Colony, Mansarovar, Jaipur

<b>DISTANCES</b>	Airport	11.6 km - 15 min
	Railway station	9.6 km - 17 min
	Central Bus stand	11 km - 20 min
	Metro station	2.9 km - 7 min
	Ajmer Expressway	2.8 km - 6 min
	ISKCON temple	3.3 km - 6 min



## Arihant Shivank Infra Projects Ltd.

2nd Floor, Class of Pearl, Income Tax Colony, Tonk Road, Jaipur-302015  
 0141- 6595026, 6595023, 2709457, 2786444, 2781455  
 info@arihantshivank.com www.arihantshivank.com

### disclaimer

All specifications mentioned are tentative and subject to change. The developers / builders and/or the architect reserve the right to change any information without prior notice. this brochure is for illustrative purposes and shall not be treated as a legal document.

architectural design

architect plus

92.PANCHSHEEL ENCLAVE, JLN MARG, JAIPUR  
 email: architectplus79@yahoo.in, 141-4018026