



*Reserved*

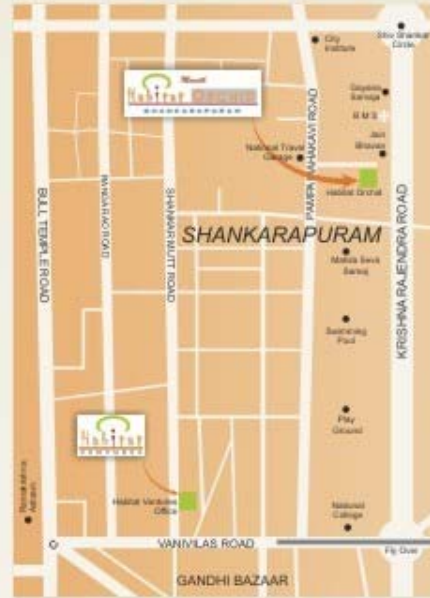
*For The Exclusive Few !!!*

 *Munoth*  
**Habitat ORCHID**  
SHANKARAPURAM

## Location

### Salient Features

- Highly efficient & utilitarian design with good lighting, ventilation & as per Vastu principles
- Conceived & being built by a group of experienced architects & engineers ensuring good quality of spaces & construction
- Extensively Landscaped roof top
- Possibility for dual car parking at stilt level with segregated 2-wheeler parking to ensure easy & scratch-free car parking



### Parking Plan



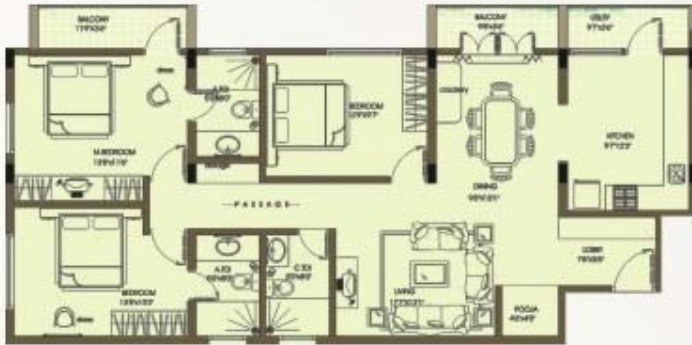
### Amenities

- Provision for Parking Two Cars and segregated area for Two-wheelers
- A 6-Passenger Automatic Door Elevator
- Rain Water Recharging for Borewell
- Intercom Facility from the Security Room to each apartment
- Generator for Elevator, pumps and common area lighting + upto 500 watts each apartment
- Sky Garden with infrastructure for Serving + Toilet at the Terrace
- Borewell & BWSSB Connection to ensure continuous water supply
- Toilet for Security, Staff & Drivers, etc., at Stilt Level

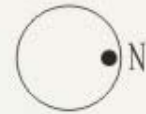


# Floor Plans

Type 4



Type 1



Type 3



Type 2



## Specifications

- RCC frame structure with concrete block partitions
- Pastel coloured EWC & Wash basin of 'Cera' or equivalent make with Marc' or equivalent make Faucets
- A stainless steel sink with a faucet shall be provided in the Kitchen. Provision made for installation of Water Filtration System
- Kitchen Counter: 30mm thick polished Granite Slab with Edge Polishing
- Windows: Powder Coated Aluminum Sliding Shutters with Clear/Pinned Glass with MS Safety Grills
- French Windows: Hard Wood Frame + Teak Wood Shutters with Clear/ Pinned Glass
- Main Door: Teak Wood Door Frame with Panelled Teak Wood Shutter
- Other doors: Hard wood Door Frames with 'Moulded Skin' Flush Doors
- Modular switches shall be of 'Anchor Roma' or equivalent make
- Vitrified Tiles Flooring & Skirting in Living/Dining & Bedrooms & Kitchen
- Tiles dadoing above the counter up to a height of 2'0" in Kitchen. Dadoing up to a height of 7' 0" in Toilets
- Anti-skid Ceramic Tile Flooring in Bathrooms and Balconies
- Lobby/Staircase: Granite / Marble Flooring
- Weathercoat Paint on Front Façade + Water Proof Cement Paint in other areas with Texture in select locations
- Internal paint: Acrylic Emulsion