

SPECIFICATIONS

STRUCTURE:

- * Earthquake resistant RCC framed structure.

MASONRY:

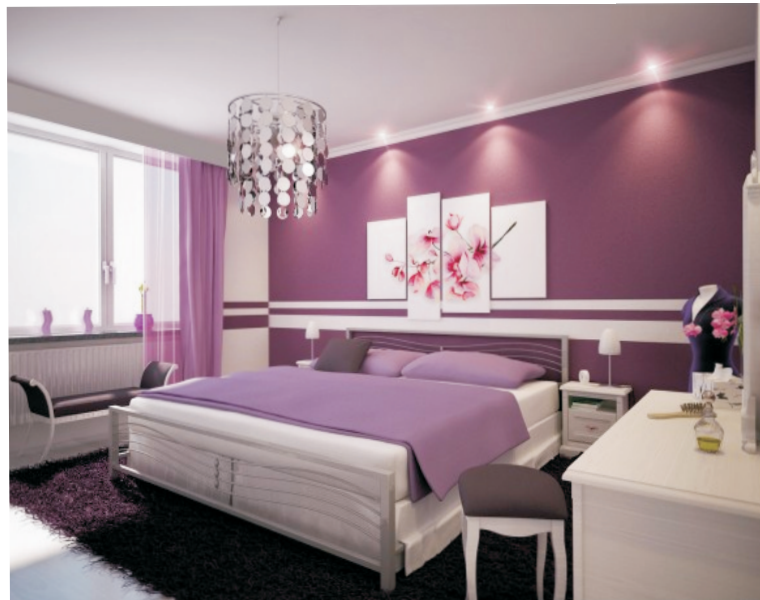
- * External 6" & internal 4" brick walls.
- * External sand faced & internal neeru sanla plaster.

FLOORING:

- * Vitrified tiles 24"x24" in all rooms.
- * Antiskid ceramic tiles for toilets & terraces.

DOOR SHUTTERS:

- * Main door: Elegant, exclusive designer/moulded door.
- * Internal: Moulded door with decorative skin.
- * Terrace: Aluminium powder coated sliding doors.
- * premium quality S.s. fixtures & fittings.



WINDOWS:

- * Powder coated aluminum sliding window with mosquito nett & safty grill.
- * Powder coated aluminum louvered windows with provision for exhaust fan for toilet.

KITCHEN:

- * Black granite top with S.S. sink
- * Glazed/ceramic dado up to 4' high.
- * Provision for water purifier.

TOILETS:

- * Glazed/Ceramic tile dado up to 7 ft. height.
- * White sanitary ware .
- * Jaguar make CP fittings for all toilets.

ELECTRICAL:

- * Concealed, fire resistant quality copper wiring.
- * Sufficient light points with modular switches.
- * TV Point in living & master bedroom.
- * Telephone point in living room.
- * A.C. point in master bedroom.
- * Provision of exhaust fan in kitchen & toilets.
- * Earth leakage circuit breaker.

PAINTS:

- * Internal walls finished with pleasing oilbond.
- * External walls finished with quality cement paint.

