

MVL
CoralTM

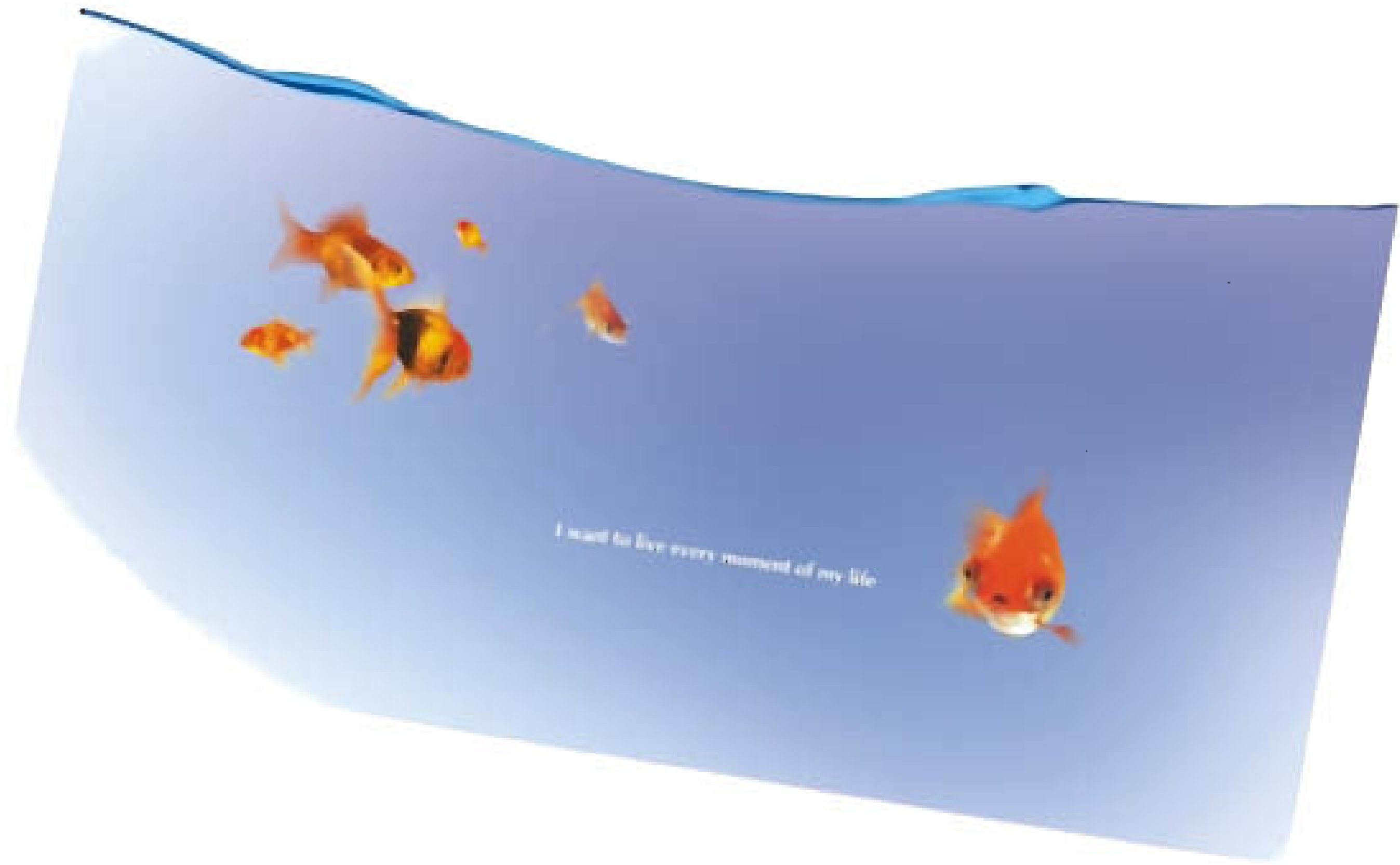
Integrated Residential Complex at Bhiwadi





At MVL, we believe that a home is an environment that contributes to the growth, well-being and happiness of the entire family. A home is also a statement of one's status and social standing. With such understanding, MVL is developing an integrated residential complex, MVL Coral at Ilhwa-ah.

The Grand Entrance



I want to live every moment of my life



MVL
Coral
Integrated Residential Complex at Borivali

As one thinks of MVL Coral, a picturesque environment unfolds before the eyes. Vast expanses of greens dotted by myriadly coloured flowers... captivating lily ponds inhabited by lovely little fishes... rays of the morning sun playing flirtatiously with gulmohar leaves... and magnificent concrete towers draped in bewitching moon light. Every look of MVL Coral exudes pristine beauty. Every moment lived here is filled with abundant joy.

MVL Coral - Designed by renowned architect Vivek Bhole from Mumbai

The night time beauty



Imagine the cool morning breeze caressing your body... of the pleasant evening winds slipping in gently gratifying the senses.
Romance here, is in the air.
At SMV Coral, every apartment is uniquely designed to enable maximum flow of fresh air in every corner, every room.



The resplendent views of landscaped greens and refreshing blues leave you mesmerized everytime you set your eyes on them. As you watch through the window of your cozy bedroom, nature unfolds its most magnificent creations. That's the magic at MVL Coral, stress-busting at its simplistic best.



I want to feel the serenity. I want to view the beauty.



A green belt within the complex.
Exceptional natural beauty all around.



I want to run, I want to play. And I want to beat all my friends.



Apart from a great living experience, MVL Coral is an environment enabling **unrestricted growth** for the little residents. Open streets, **besut land** and oxygen filled atmosphere complements the bustling kids play area and a separate children's swimming pool.



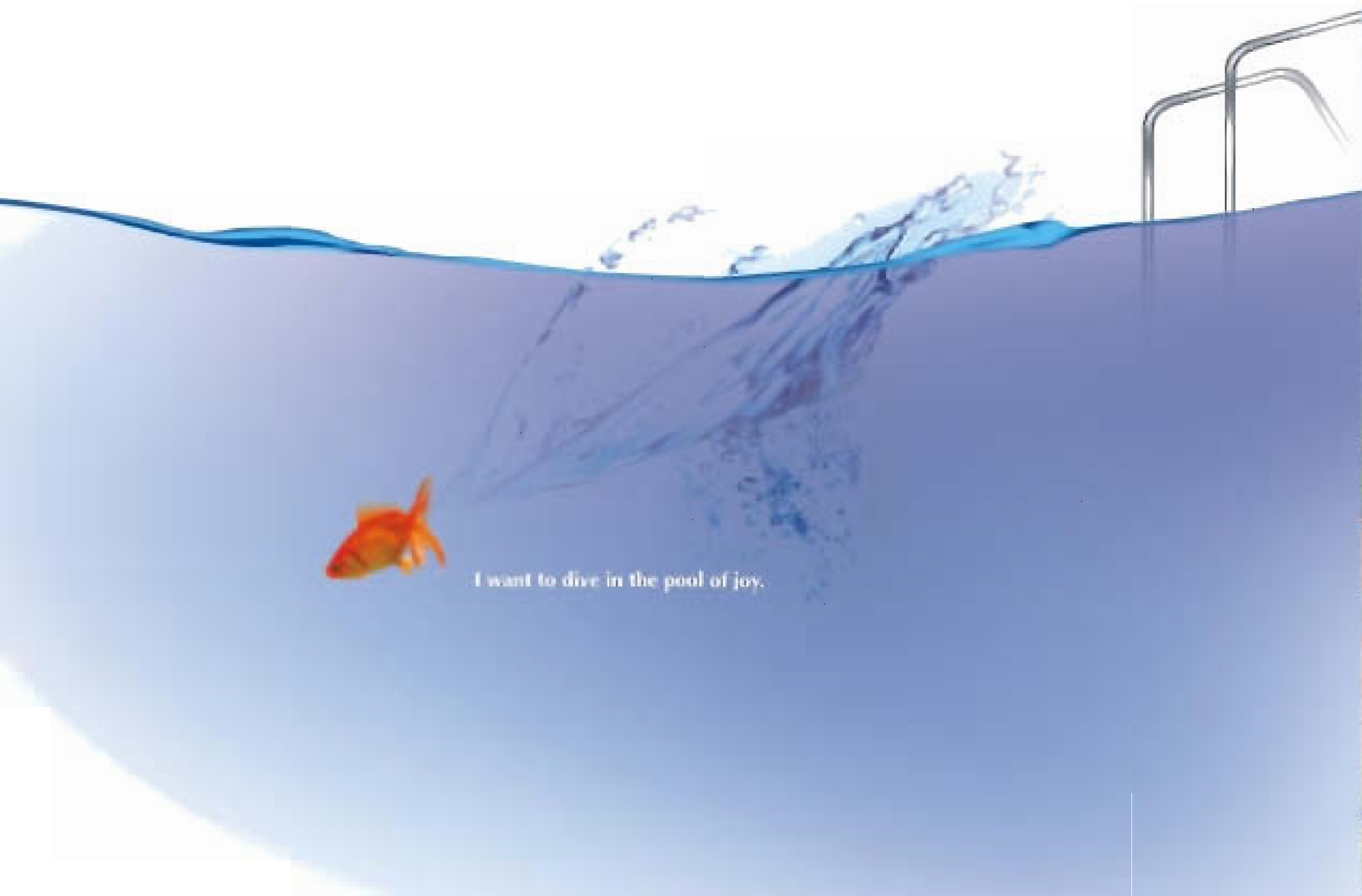
MVNL Coral is conceptualized for a pampered lifestyle. Offering lavish living spaces for the entire family, the complex is a place where comforts are splendor, and worries are gone. A place that relaxes as well as happening. A vibrant haven as well as a scenic destination.



Designed by renowned Architect, Niyek Bhalu from Mumbai, MVLC Coral is a perfect blend of beauty and functionality. The modern architectural facade is complemented by plush interiors and elegant fixtures, evoking a truly global feel. Life here is nothing less than the ultimate in luxury.



I want to live in style.



I want to dive in the pool of joy.

The Refreshing Swimming Pool



Among the many splendid attractions of MVZ Coral is an international class shopping mall within its complex. Focused by glittering showrooms of globally patterned brands and a sumptuous food court, the mall is set to provide enjoyable shopping, dining and entertainment options to the residents of this wonderful world.

I want to shop the way the world does.





I want to live in MVL Coral.



LEGEND

01	Swimming Pool
02	Swimming Pool Deck
03	Club House
04	Shopping Centre
05	Fountain
06	Stream
07	Pergola
08	Exercise Area
09	Yoga/Meditation Area
10	Paved Path



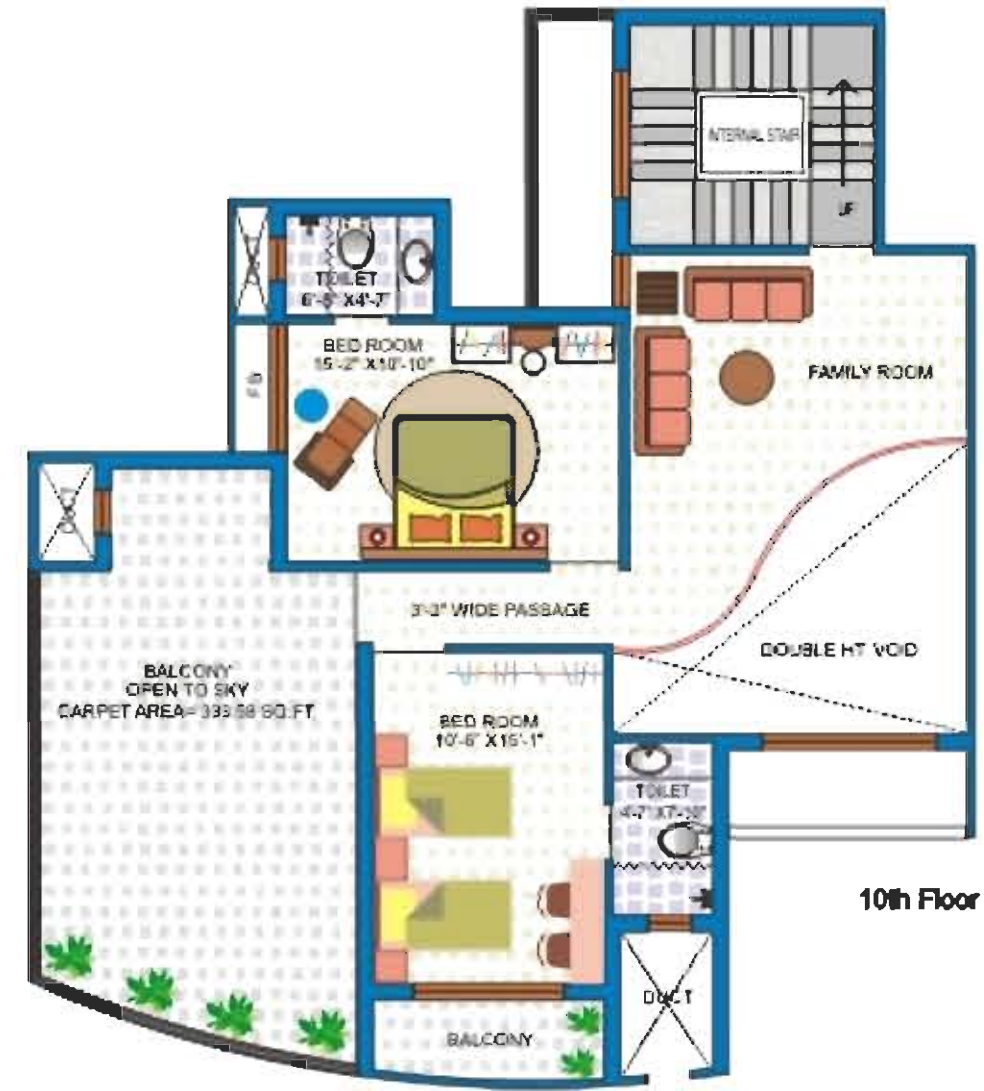
MVL Coral, a nature-inspired integrated residential complex where every conceivable amenity is close at hand.

- Located on 1.73 acres of prime land on Bhiwadi - Alwar road, Bhiwadi. Just 1.5 kms off NH8
- Choice of 2/3 Bedroom Apartments, Premium Apartments, Garden View Apartments and Penthouses
- Earthquake resistant RCC framed structure
- Vast open spaces and landscaped gardens
- Cross ventilation and natural light
- Specially designed swimming pool
- Club house, sports facilities and meditation centre
- Modular kitchen
- World class commercial plaza within the complex
- 100% power backup
- Covered car parking
- Treated drinking water
- Round the clock security
- Rain water harvesting
- Passenger Lifts with power backup
- Provision for Wi-Fi and internet





9th Floor



10th Floor

Penthouse (Duplex) - 3500 sq.ft
4 Bedrooms, Living/dining room, 1 Family Room, Kitchen, 4 Bathrooms,
1 Store, 4 Balconies, 2 Service Balconies and Terrace



Garden View - 2350 sq.ft
4 Bedrooms, 1 study, Living/dining room,
Kitchen, 4 Bathrooms, 7 Verandahs



Premium - 1800 sq.ft
3 Bedrooms, Living/dining room, Kitchen,
5 Bathrooms, 5 Balconies, 1 service Balconies



	Flooring	Wall/Ceiling	Doors	Windows	Electrical	Sanitary	A/C
STANDARD	Living and Dining	Vitrified tiles	Acrylic paint	Teak wood frame, veneer polished shutter as finish hardware	Anodized aluminum glazing	Modular switches, copper wiring in concealed conduit, telephone and TV points	
	Master Bedroom	Wooden (HDF) laminated vitrified tiles	Acrylic paint	Hardwood frame, painted paneled door/moulded skin door, as finish hardware	Anodized aluminum glazing	Modular switches, copper wiring in concealed conduit, telephone and TV points	
	Other Bedrooms/Study	Vitrified tiles	Oil bound distemper	Hardwood frame, painted paneled door/moulded skin door, as finish hardware	Anodized aluminum glazing	Modular switches, copper wiring in concealed conduit, telephone and TV points	
	Toilets	Granite counter in master toilet and marble counter in other toilets, ceramic tiles	Oil bound distemper, ceramic tiles	Hardwood frame, painted paneled door/moulded skin door, as finish hardware	Anodized aluminum glazing	Modular switches, copper wiring in concealed conduit	China ware with European etc, CP fittings, soap dish, towel rail, looking mirror
PREMIUM	Kitchen	Vitrified tiles	Acrylic paint	Hardwood frame, painted paneled door/moulded skin door, as finish hardware	Anodized aluminum glazing	Modular switches, copper wiring in concealed conduit, telephone and TV points	CP fittings, stainless steel sink with drain board
	Balconies	Ceramic tiles	Acrylic paint	Teak wood frame, veneer polished shutter as finish hardware	Anodized aluminum glazing	Modular switches, copper wiring in concealed conduit	
	Living and Dining	Italian vitrified tiles	Acrylic paint	Hardwood frame, painted paneled door/moulded skin door, as finish hardware	Anodized aluminum glazing	Modular switches, copper wiring in concealed conduit, telephone and TV points, fans and light fittings	Split window
	Master Bedroom	Wooder (HDF) laminated	Acrylic paint	Hardwood frame, painted paneled door/moulded skin door, as finish hardware	Anodized aluminum glazing	Modular switches, copper wiring in concealed conduit, telephone and TV points, fans and light fittings	Split window
GARDEN VIEW	Other Bedrooms/ Study	Wooder (HDF) laminated	Acrylic paint	Hardwood frame, painted paneled door/moulded skin door, as finish hardware	Anodized aluminum glazing	Modular switches, copper wiring in concealed conduit, telephone and TV points, fans and light fittings	Split window
	Toilets	Granite counter in master toilet and marble counter in other toilets, premium quality ceramic tiles	Acrylic paint, premium quality ceramic tiles	Hardwood frame, painted paneled door/moulded skin door, as finish hardware	Anodized aluminum glazing	Modular switches, copper wiring in concealed conduit, geyser and exhaust fan	China ware with European etc, CP fittings, soap dish, towel rail, looking mirror
	Kitchen	Vitrified tiles	Acrylic paint, premium quality ceramic tiles, granite worktop, standard modular kitchen	Hardwood frame, painted paneled door/moulded skin door, as finish hardware	Anodized aluminum glazing	Modular switches, copper wiring in concealed conduit, telephone and TV points	CP fittings, stainless steel sink with drain board
	Balconies	Premium quality ceramic tiles	Acrylic paint	Teak wood frame, decorative polished shutter as finish hardware	Anodized aluminum glazing	Modular switches, copper wiring in concealed conduit, fans and light fittings	
PENTHOUSE	Living and Dining	Marble stone	Acrylic paint	Hardwood frame, painted paneled door/moulded skin door, as finish hardware	Anodized aluminum glazing	Modular switches, copper wiring in concealed conduit, telephone and TV points, fans and light fittings	Split
	Master Bedroom	Wooder (HDF) laminated	Acrylic paint	Hardwood frame, painted paneled door/moulded skin door, as finish hardware	Anodized aluminum glazing	Modular switches, copper wiring in concealed conduit, telephone and TV points, fans and light fittings	Split
	Other Bedrooms/ Study	Wooder (HDF) laminated	Acrylic paint	Hardwood frame, painted paneled door/moulded skin door, as finish hardware	Anodized aluminum glazing	Modular switches, copper wiring in concealed conduit, telephone and TV points, fans and light fittings	Split
	Toilets	Granite counter in master toilet and marble counter in other toilets, premium quality ceramic tiles	Acrylic paint, premium quality ceramic tiles	Hardwood frame, painted paneled door/moulded skin door, as finish hardware	Anodized aluminum glazing	Modular switches, copper wiring in concealed conduit, geyser and exhaust fan	Imported China ware with European etc, imported CP fittings, soap dish, towel rail, looking mirror
PENTHOUSE	Kitchen	Vitrified tiles	Acrylic paint, premium quality ceramic tiles, granite worktop, hi quality premium modular kitchen	Hardwood frame, painted paneled door/moulded skin door, as finish hardware	Anodized aluminum glazing	Modular switches, copper wiring in concealed conduit, telephone and TV points	CP fittings, stainless steel sink with drain board
	Balconies	Premium quality ceramic tiles	Acrylic paint	Teak wood frame, premium decorative polished shutter, as finish hardware	Anodized aluminum glazing	Modular switches, copper wiring in concealed conduit, fans and light fittings	
	Living and Dining	Italian stone	Acrylic paint	Hardwood frame, painted paneled door/moulded skin door, as finish hardware	Anodized aluminum glazing	Modular switches, copper wiring in concealed conduit, telephone and TV points, fans and light fittings	Split
PENTHOUSE	Master Bedroom	Wooder (HDF) laminated	Acrylic paint	Hardwood frame, painted paneled door/moulded skin door, as finish hardware	Anodized aluminum glazing	Modular switches, copper wiring in concealed conduit, telephone and TV points, fans and light fittings	Split
	Other Bedrooms/ Study	Wooder (HDF) laminated	Acrylic paint	Hardwood frame, painted paneled door/moulded skin door, as finish hardware	Anodized aluminum glazing	Modular switches, copper wiring in concealed conduit, telephone and TV points, fans and light fittings	Split
PENTHOUSE	Toilets	Granite counter in master toilet and marble counter in other toilets, premium quality ceramic tiles	Acrylic paint, premium quality ceramic tiles	Hardwood frame, painted paneled door/moulded skin door, as finish hardware	Anodized aluminum glazing	Modular switches, copper wiring in concealed conduit, geyser and exhaust fan	Imported China ware with European etc, imported CP fittings, soap dish, towel rail, looking mirror
	Kitchen	Vitrified tiles	Acrylic paint, premium quality ceramic tiles, granite worktop, hi quality premium modular kitchen	Hardwood frame, painted paneled door/moulded skin door, as finish hardware	Anodized aluminum glazing	Modular switches, copper wiring in concealed conduit, telephone and TV points	CP fittings, stainless steel sink with drain board
PENTHOUSE	Balconies	Premium quality ceramic tiles	Acrylic paint	Teak wood frame, decorative polished shutter, as finish hardware	Anodized aluminum glazing	Modular switches, copper wiring in concealed conduit, fans and light fittings	
	Living and Dining	Italian stone	Acrylic paint	Hardwood frame, painted paneled door/moulded skin door, as finish hardware	Anodized aluminum glazing	Modular switches, copper wiring in concealed conduit, telephone and TV points, fans and light fittings	Split

External Finish : Later or grade permanent acrylic paint

